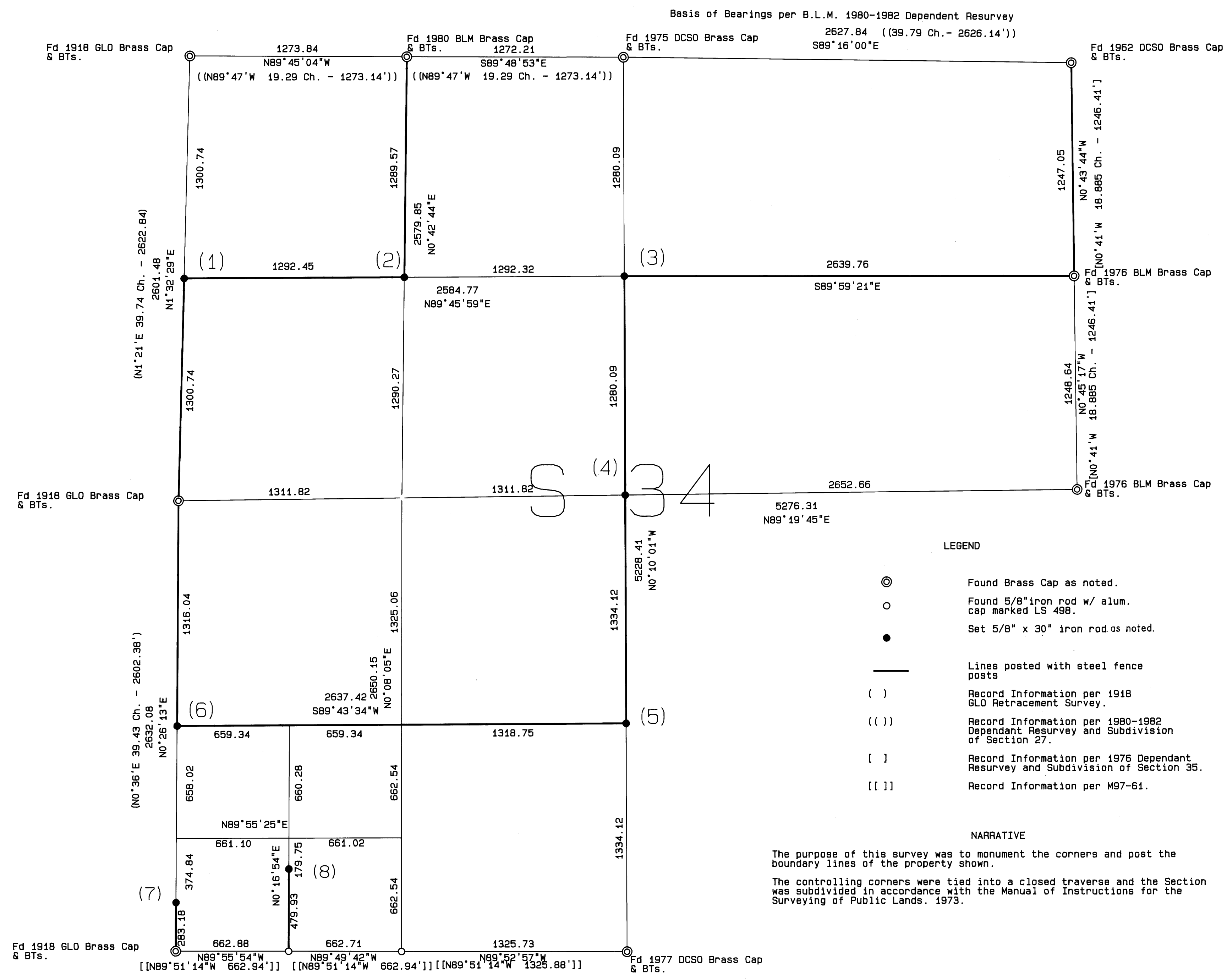


BOUNDARY SURVEY

IN SECTION 34, TOWNSHIP 30 SOUTH, RANGE 7 WEST,
WILLAMETTE MERIDIAN, DOUGLAS COUNTY, OREGON
FOR ROSEBURG FOREST PRODUCTS, INC.
28 MAR 1994

FILED
Date: 4-7-94 By: J.P.
This survey consists of:
Map: M119-21
Narrative:
Corner Rpt.:
DOUGLAS COUNTY SURVEYOR J.C.



- CORNER DESCRIPTIONS
- (1) NORTH 1/16 CORNER, SECTION 33 AND SECTION 34
Set a 5/8 inch by 30 inch iron rod with a 3 1/4 inch aluminum cap marked:
T30S R7W
N1/16
S33 S34
RLS 1654
1994
from which a:
- 8 inch Madrone bears N27 W 3.1 feet scribed "N1/16 S33 BT"
- 12 inch Live Oak bears S68 E 8.9 feet scribed "N1/16 S34 BT"
- (2) NORTHWEST 1/16 CORNER, SECTION 34
Set a 5/8 inch by 30 inch iron rod with 3 1/4 inch aluminum cap marked:
T30S R7W
NW1/16 S34
RLS 1654
1994
from which a:
- 10 inch Douglas fir bears S67 W 10.3 feet scribed "NW 1/16 S34 BT".
- 6 inch Douglas fir bears N61 E 9.5 feet scribed "NW 1/16 S34 BT".
- (3) CENTER - NORTH 1/16 CORNER, SECTION 34
Set a 5/8 inch by 30 inch iron rod with 3 1/4 inch aluminum cap marked:
T30S R7W
C
N1/16 S34
C
RLS 1654
1994
from which a:
- 11 inch Douglas fir bears N 9 E 7.1 feet scribed "CN 1/16 S34 BT".
- 22 inch White Pine bears S58 W 16.9 feet scribed "CN 1/16 S34 BT".
- (4) CENTER 1/4 CORNER, SECTION 34
Set a 5/8 inch by 30 inch iron rod with 3 1/4 inch aluminum cap marked:
T30S R7W
C1/4 S34
RLS 1654
1994
from which a:
- 4 inch Cedar bears N 1 W 31.7 feet scribed "X BT".
- 10 inch Pine bears S10 W 88.7 feet scribed "C1/4 S34 BT".
- 31 inch Pine bears N85 W 7.7 feet scribed "C1/4 S34 BT".
- 18 inch Pine bears S56 E 29.4 feet scribed "C1/4 S34 BT".

- (5) CENTER-SOUTH 1/16 CORNER, SECTION 34
Set a 5/8 inch by 30 inch iron rod with 3 1/4 inch aluminum cap marked:
T30S R7W
S1/16 S34
C
RLS 1654
1994
from which a:
- 24" Ponderosa Pine bears Due East 41.0 feet scribed "CS 1/16 S34 BT".
- 24" Ponderosa Pine bears S15 E 41.0 feet scribed "CS 1/16 S34 BT".
- (6) SOUTH 1/16 CORNER, SECTION 33 AND SECTION 34
Set a 5/8 inch by 30 inch iron rod with 3 1/4 inch aluminum cap marked:
T30S R7W
S1/16 S34
RLS 1654
1994
from which a:
- 12 inch Douglas fir bears N88 E 8.8 feet scribed "S1/16 S34 BT".
- 14 inch Madrone bears N47 W 27.4 feet scribed "S1/16 S33 BT".
- (7) PROPERTY CORNER REFERENCE MONUMENT, SECTION 33 AND SECTION 34.
Set a 5/8 inch by 30 inch iron rod at the high water mark of Cow Creek with 3 1/4 inch aluminum cap marked:
RM
PC
RLS 1654
1994
from which a:
- 8 inch Myrtle bears N71 E 14.6 feet scribed "RM BT".
- 6 inch Douglas fir bears S22 W 15.8 feet scribed "RM BT".
- (8) PROPERTY CORNER REFERENCE MONUMENT, SECTION 34.
Set a 5/8 inch by 30 inch iron rod at the high water mark of Cow Creek with 3 1/4 inch aluminum cap marked:
RM
PC
RLS 1654
1994
from which a:
- 6 inch Madrone bears N39 E 7.2 feet scribed "RM BT".
- 12 inch Live Oak bears N84 W 17.1 feet scribed "RM BT".

REGISTERED PROFESSIONAL LAND SURVEYOR
Ronald A. Quimby
OREGON
JULY 14, 1978
RONALD A. QUIMBY
1954
EXP 12-31-94

COUNTY SURVEYORS FILE DATA
DO NOT REMOVE FROM OFFICE

