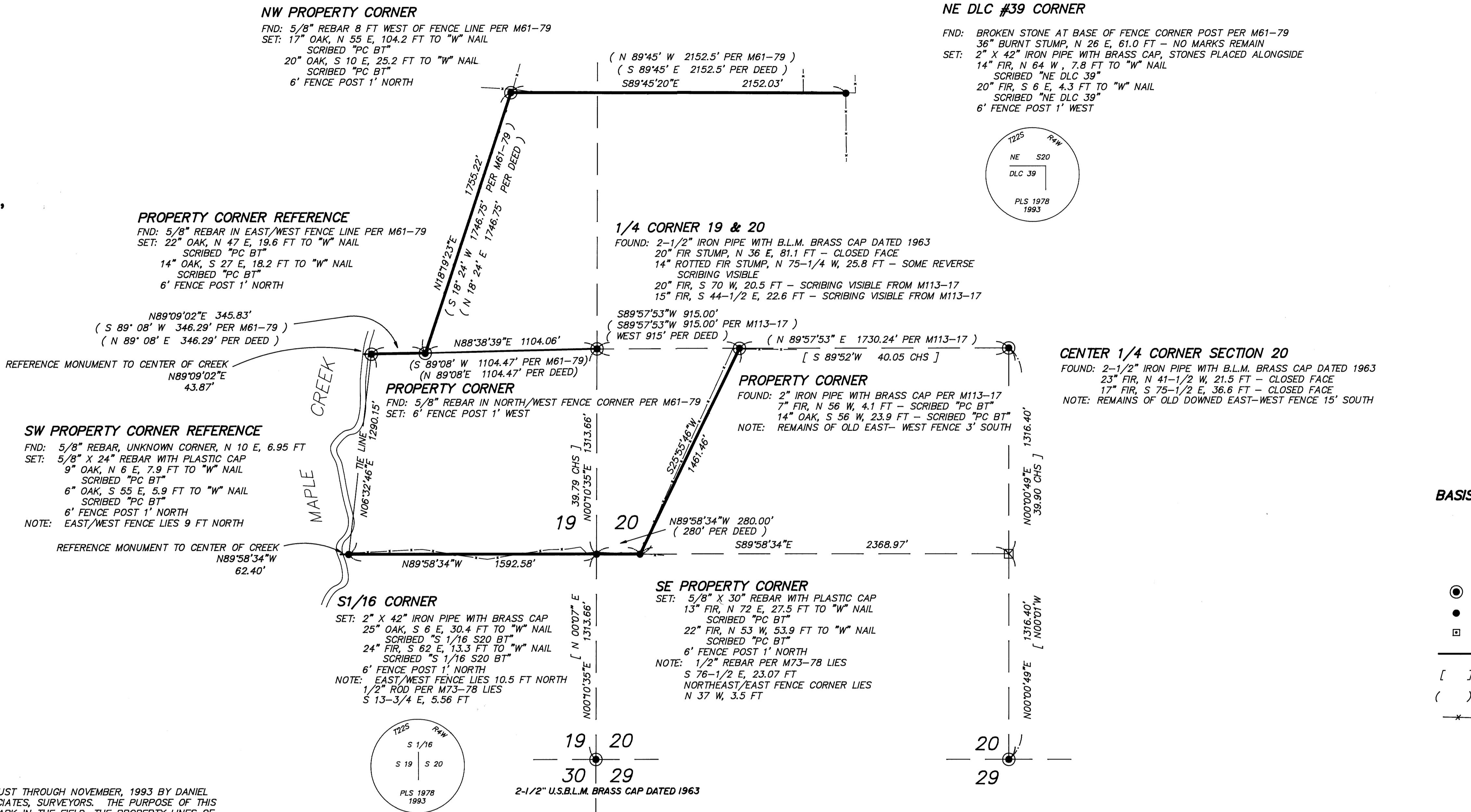


FILED
 Date: 3/31/94 By: J.P.
 This survey consists of:
 Map: M119-20
 Narrative:
 Corner Rpt:
 DOUGLAS COUNTY SURVEYOR

SCALE 1"=400'



BASIS OF BEARING: SOLAR OBSERVATION PER 1991 SURVEY M113-17

LEGEND

- - CORNERS FOUND (AS NOTED)
- - CORNERS SET AS NOTED
- - CALCULATED POINT (NOT SET)
- - PROPERTY LINE
- [] - RECORD DATA - 1963 BLM SURVEY
- () - RECORD DATA - SURVEY OR DEED
- *— - EXISTING FENCE

NARRATIVE

THIS SURVEY WAS MADE IN AUGUST THROUGH NOVEMBER, 1993 BY DANIEL W. BAKER OF BAKER AND ASSOCIATES, SURVEYORS. THE PURPOSE OF THIS SURVEY WAS TO LOCATE AND MARK IN THE FIELD, THE PROPERTY LINES OF WEYERHAEUSER COMPANY IN SECTIONS 19 AND 20, T22S, R4W, W.M., AS CALLED FOR IN THE DEED FROM PUBLISHERS PAPER COMPANY TO WEYERHAEUSER COMPANY OF DECEMBER 15, 1983; BOOK 867, PAGE 959, DOUGLAS COUNTY OFFICIAL RECORDS. BEARINGS FOR THIS SURVEY WERE BASED ON A SOLAR OBSERVATION PER M113-17. A WILD T1000 THEOMAT WITH A DISS E.D.M., AND A WILD T1000 WITH A D1600 E.D.M. WERE USED IN THIS SURVEY. RANDOM TRANSIT TRAVERSES WERE RUN BETWEEN FOUND CORNERS FOR CONTROL, AND ALONG THE PROPERTY LINES TO BE MARKED, WITH A MINIMUM ERROR OF CLOSURE OF 1 FOOT IN 10,000 FEET. OFFSETS FROM THE RANDOM TRAVERSE LINE TO THE TRUE PROPERTY LINE WERE CALCULATED AND USED TO DETERMINE THE POSITION OF THE TRUE PROPERTY LINE. THE TRUE PROPERTY LINE WAS MARKED IN THE FIELD BY BLAZING TREES (BLAZES NOTCHED AND PAINTED RED) ON BOTH SIDES OF THE TRUE LINE. THE FOLLOWING CORNERS WERE SET: SOUTH 1/16 WEST LINE, NORTHEAST D.L.C. No. 39, SOUTHEAST PROPERTY CORNER IN SECTION 20, AND A REFERENCE MONUMENT FOR THE SOUTHWEST PROPERTY CORNER IN SECTION 19. THE SOUTH 1/16 WEST LINE CORNER WAS SET AT MIDPOINT BETWEEN THE SOUTHWEST SECTION CORNER AND THE WEST 1/4 CORNER OF SECTION 20. THE NORTHEAST CORNER OF D.L.C. No. 39 WAS FOUND AS NOTED ON M61-79 AND PERPETUATED IN THIS SURVEY. THE SOUTHWEST PROPERTY CORNER IN SECTION 20 WAS SET ON THE EAST-WEST CENTERLINE OF THE SOUTHWEST 1/4, 280.00 FEET EASTERLY OF THE SET SOUTH 1/16 CORNER. THE SOUTHWEST PROPERTY CORNER IN SECTION 19 IS AT THE CENTER OF MAPLE CREEK, ALONG A PROLONGATION OF THE EAST-WEST CENTERLINE OF THE SOUTHWEST 1/4 OF SECTION 20. A MONUMENT WAS SET ON THIS LINE AS A REFERENCE TO THE TRUE CORNER. THE PROPERTY CORNERS WERE MONUMENTED WITH A 5/8" REBAR WITH A YELLOW PLASTIC CAP, MARKED "PLS 1978". THE SOUTH 1/16 CORNER AND THE NORTHEAST CORNER OF D.L.C. No. 39, WERE MONUMENTED WITH A 2" X 42" IRON PIPE WITH 2 1/2" BRASS CAP, MARKED WITH THE PROPER MARKINGS PER THE B.L.M. MANUAL OF INSTRUCTIONS - 1973, AND ALSO MARKED "PLS 1978". THE SECTION WAS SUBDIVIDED ACCORDING TO THE B.L.M. "MANUAL OF INSTRUCTIONS - 1973". THE EXISTING PROPERTY CORNERS IN THE SOUTHEAST 1/4 OF THE NORTHEAST 1/4 WERE SET IN M61-79 AND CALLED IN DEED FOR PROPERTY, BOOK 867, PAGE 961, DOUGLAS COUNTY OFFICIAL RECORDS. BEARING TREES SET IN THIS SURVEY WERE REFERENCED AT MAGNETIC BEARING 20 DEGREES EAST WITH DISTANCES MEASURED TO A "W" NAIL IN THE LOWER BLAZE.

SECTION CORNER 19, 20, 29, 30

FOUND: 48" CUT FIR STUMP REMAINS AT 1963 RECORD S 63 E, 91 LKS - OBT
 FIR STUMP REMAINS, S 41-3/4 W, 55.1 FT - DEADFALL HAS SCRIBING
 (1963 RECORD S 42 W, 86 LKS - OBT)
 24" STUMP REMAINS AT 1963 RECORD N 73 W, 48 LKS
 9" FIR SNAG 1963 RECORD N 60 E, 15.5 LKS - SCRIBING VISIBLE
 ON REMAINS WHICH ARE DOWN AND OUT OF POSITION
 8" FIR STUB, N 23 E, 36.4 FT - SCRIBING VISIBLE (1963 RECORD
 N 22-1/2 E, 54 LKS)
 12" FIR, S 37 E, 44.9 FT - CLOSED FACE (1963 RECORD S 33-1/4 E, 68 LKS)
 8" FIR SNAG, S 78-3/4 W, 40.0 FT - SCRIBING VISIBLE (1963 RECORD
 S 77 W, 61 LKS)
 14" FIR STUB, N 20 W, 26.8 FT - CLOSED FACE (1963 RECORD N 21 W, 41 LKS)
 8" OAK, N 75 W, 4.3 FT - CLOSED FACE
 UNKNOWN 3/4" IRON PIPE, N 20 W, 1.7 FT

1/4 CORNER 20 & 29

FOUND: 2-1/2" IRON PIPE WITH B.L.M. BRASS CAP DATED 1963
 17" FIR, N 43 W, 31.4 FT - CLOSED FACE (1963 RECORD N 49-1/4 W, 47 LKS)
 15" FIR, S 76 W, 40.9 FT - CLOSED FACE (1963 RECORD S 78-1/4 W, 62 LKS)
 ROTTEN REMAINS OF STUMP, N 37 E, 68.8 FT - ORIGINAL BT (1963 RECORD N 37 E, 104 LKS)
 29" FIR STUMP, N 49 W, 10.5 FT - PARTIAL SCRIBING VISIBLE (1963 RECORD N 42 W, 16 LKS)
 1-3/4" IRON PIPE, S 13-1/2 E, 3.6 FT (1963 RECORD S 12-1/2 E, 5.5 LKS)
 NOTE: FENCE CORNER BEARS S 21 E, 9.2'

REGISTERED
 PROFESSIONAL
 LAND SURVEYOR
 DANIEL W. BAKER
 1978

COUNTY SURVEYORS FILE DATED
 DO NOT REMOVE FROM OFFICE

EXPIRES 12/31/93

SURVEY IN
 E 1/2 SEC. 19 & W 1/2 SEC. 20, T22S, R4W, W.M.
 DOUGLAS COUNTY, OREGON

CLIENT: WEYERHAEUSER COMPANY

DRAWN BY: DHW
 DATE: 11/29/93
 FILE: 220419

BAKER AND ASSOCIATES, SURVEYORS
 1385 OAK STREET - SUITE 3
 EUGENE, OREGON (503) 343-7243