

RESURVEY AND SUBDIVISION OF SECTION 9, T 29 S, R 5 W, W. M. DOUGLAS COUNTY, OREGON

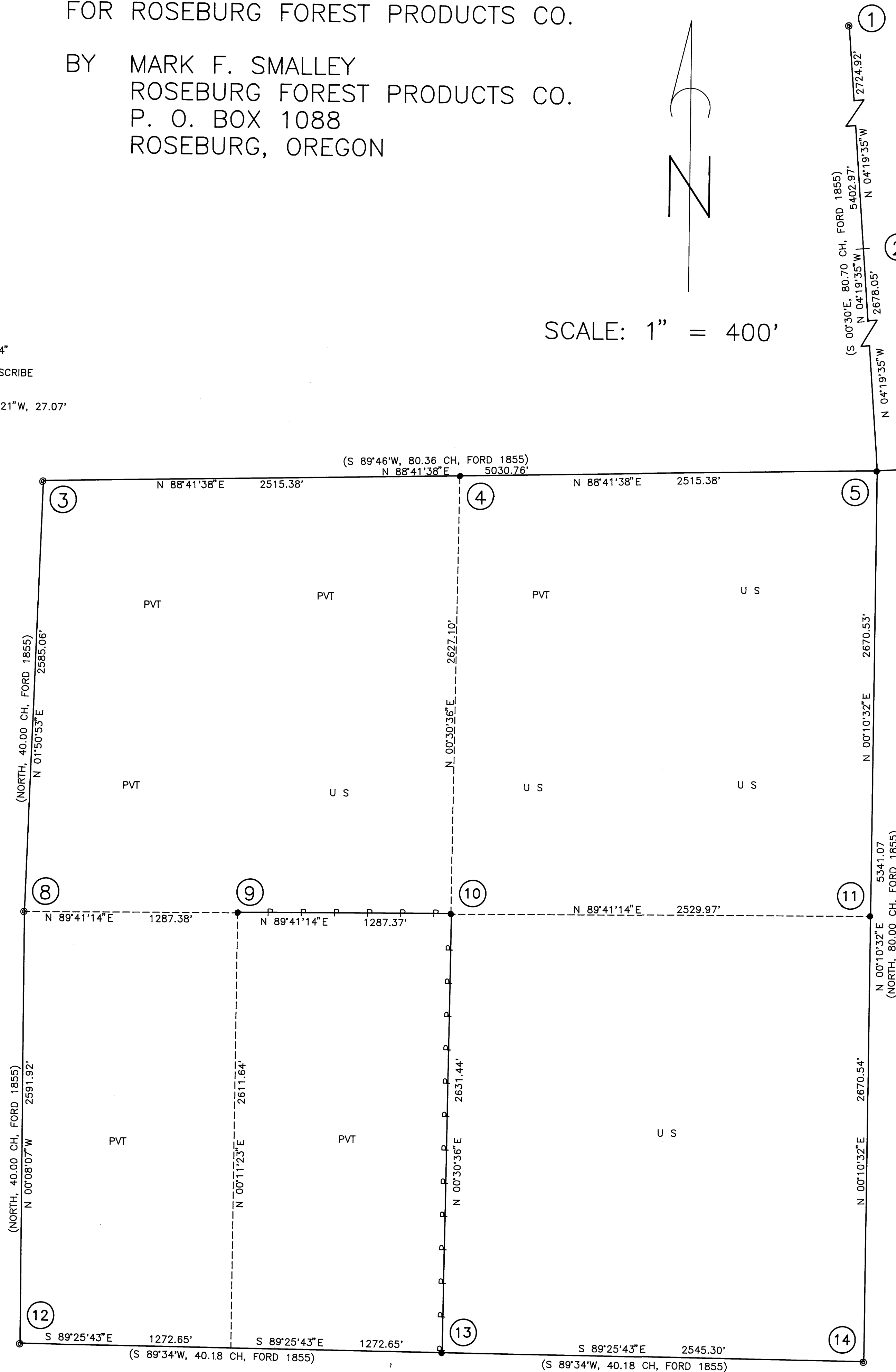
FOR ROSEBURG FOREST PRODUCTS CO.

BY MARK F. SMALLEY
ROSEBURG FOREST PRODUCTS CO.
P. O. BOX 1088
ROSEBURG, OREGON



SCALE: 1" = 400'

- ① SECTION CORNER $\frac{33}{43}$
FOUND 1961 COUNTY SURVEYOR BCIP
BTs: 16" FIR N40°W 41.1' STUMP
16" FIR N38°E 6.7' ROTTEN STUMP
16" FIR N8°E 57.3' DOWN
18" FIR S29°E 20.0' STUMP
12" FIR S78°W 39.2' HEALED
SCRIBED: 28" CEDAR S86°E 181.8' "S 34 BT"
6" CEDAR N14°W 106.5' "S 33 BT"
12" MADRONE NORTH 133.8' "S 33 BT"
- ② 1/4 CORNER 413
FOUND 1961 COUNTY SURVEYOR BCIP & 3/4" IP
BTs: 21" CEDAR N21°E 143.0' STUMP
22" FIR S64°W 40.0' STUMP
FOUND NO EVIDENCE OF MARKHAM BTs
THIS MONUMENT BEARS N86°40'32"E, 15.71' FROM
THE POSITION CALCULATED FOR THIS CORNER
- ③ SECTION CORNER $\frac{51}{89}$
FOUND 1" IRON PIPE
BTs: 36" LAUREL N33 3/4°W 106.9' HEALED
18" FIR N77°W 24.4' STUMP
30" FIR N8 1/2°E 42.9' STUMP
20" FIR S26 1/2°E 4.0' STUMP
16" MAPLE S79 1/2°E 110.8' HEALED
24" FIR S24°W 37.0' STUMP
SCRIBED: 14" CEDAR N88°E 14.5' "S 4 BT"
12" CEDAR S31°W 4.0' "S 8 BT"
- ④ 1/4 CORNER $\frac{3}{9}$
SET 5/8"X48" IR & ALUMINUM CAP MARKED "LS 2354"
SCRIBED: 20" FIR S50°W 180.0' "1/4 S BT"
14" ALDER N63°W 27.1' "1/4 S BT" BARK SCRIBE
18" CEDAR N12°W 345.0' "1/4 S BT"
28" CEDAR NORTH 283.0' "1/4 S BT"
POSITION OF MARKHAM'S 1/4 CORNER BEARS N18°06'21"W, 27.07'
NO PIPE WAS FOUND, BASED ON MARKHAM'S BTs.
- ⑤ SECTION CORNER $\frac{41}{10}$
SET 5/8"X48" IRON ROD & ALUMINUM CAP
MARKED "LS 2354"
SCRIBED: 10" FIR S58°E 12.4' "S 10 BT"
36" FIR N64°W 15.0' "S 4 BT"
22" CEDAR N68°E 22.8' "S 3 BT"
30" FIR N2°W 43.8' "S 4 BT"
MARKHAM'S IRON PIPE BEARS N45°34'05"W 24.14'
- ⑥ 1/4 CORNER $\frac{3}{10}$
FOUND 1973 COUNTY SURVEYOR BCIP & 3/4" IP
BTs: 30" FIR N70°W 125.7' HEALED
24" FIR N15°W 88.7' HEALED
12" FIR S2°E 55.8' ROTTEN STUMP
THIS MONUMENT BEARS N38°52'58"W, 12.24' FROM
THE POSITION CALCULATED FOR THIS CORNER
- ⑦ SECTION CORNER $\frac{31}{11}$
FOUND 1962 COUNTY SURVEYOR BCIP & 3/4" IP
BTs: 20" PINE N30°W 28.5' HEALED
22" PINE N34°E 38.2' HEALED
18" OAK S20°E 22.5' HEALED OBT
30" FIR S69 1/2°W 63.2' HEALED
- ⑧ 1/4 CORNER 819
FOUND 1962 COUNTY SURVEYOR BCIP
30" OAK S85°E 54.1' HEALED OBT
9" OAK S69°W 5.9' HEALED
SCRIBED: 11" CEDAR S8°W 16.6' "1/4 S8 BT"
8" CEDAR N31°E 19.0' "1/4 S9 BT"
- ⑨ CW 1/16 SECTION 9
SET 5/8"X48" IRON ROD & ALUMINUM CAP
MARKED "LS 2354"
SCRIBED: 7" FIR S54°W 10.5' "CW 1/16 BT"
8" FIR N14°W 12.5' "CW 1/16 BT"
- ⑩ C 1/4 CORNER SECTION 9
SET 5/8"X48" IRON ROD & ALUMINUM CAP
MARKED "LS 2354"
SCRIBED: 32" CEDAR S11°E 45.0' "C 1/4 S9 BT"
6" PINE S11°W 47.3' "C 1/4 S9 BT"
15" OAK N72°W 49.5' "C 1/4 S BT"
26" FIR N26°E 62.9' "C 1/4 S BT"
- ⑪ 1/4 CORNER 9110
SET 5/8"X48" IRON ROD & ALUMINUM CAP
MARKED "LS 2354"
SCRIBED: 21" CEDAR N79°W 15.2' "1/4 S9 BT"
16" FIR N50°E 24.0' "1/4 S10 BT"
16" CEDAR S25°E 25.3' "1/4 S10 BT"
24" FIR N13°W 46.4' "1/4 S9 BT"
WENDEROTH'S IRON PIPE BEARS N25°09'03"W, 16.93'
- ⑫ SECTION CORNER $\frac{81}{17116}$
FOUND STONE WITH CHISELED + ON TOP & NORTH
BTs: 25" PINE N11°E 114.7' HEALED
14" FIR N1/2°W 111.0' HEALED
SCRIBED: 8" MYRTLE S74°W 30.3' "S 17 BT"
8" PINE N25°W 57.2' "S 8 BT"
SET STEEL FENCE POST IN MOUND OF STONES
S12°E 13.0'
- ⑬ 1/4 CORNER $\frac{9}{16}$
SET 5/8"X48" IRON ROD & ALUMINUM CAP
MARKED "LS 2354"
SCRIBED: 28" PINE N56°E 13.7' "1/4 S9 BT"
9" FIR S45°E 26.2' "1/4 S16 BT"
4" FIR S9°W 23.2' "1/4 S BT"
24" PINE N2°W 43.5' "1/4 S9 BT"
- ⑭ SECTION CORNER $\frac{9110}{16115}$
FOUND 1" IRON PIPE
BTs: 32" FIR N75°W 63.8' BARK SCRIBE
28" FIR N75°E 43.5' BARK SCRIBE
12" FIR N62 1/2°E 38.9' DOWN
18" OAK S55°E 36.3' HEALED OBT
24" FIR S35°E 36.0' BARK SCRIBE
46" FIR S80°W 22.3' BARK SCRIBE



LEGEND

- MONUMENT FOUND AS NOTED
- SET 5/8" IRON ROD & ALUMINUM CAP MARKED "LS 2354"
- CALCULATED CORNER POSITION, NO MONUMENT SET, TIES MADE AS NOTED
- SECTION LINE OR PROPERTY LINE
- P — LINE PAINTED AND BLAZED
- SUBDIVISION LINE
- () RECORD DATA

NARRATIVE

THE PURPOSE OF THIS SURVEY WAS THE SUBDIVISION OF THE SOUTHWEST ONE-QUARTER OF SECTION 9, T 29 S, R 5 W, W. M., IN DOUGLAS COUNTY, OREGON. THE PROPERTY LINES BETWEEN THE SOUTH 1/4 CORNER, THE CENTER 1/4 CORNER AND THE CENTER-WEST 1/16 CORNER WERE BLAZED AND PAINTED YELLOW.

SECTION 9 WAS ORIGINALLY SURVEYED BY NATHANIEL FORD IN 1855. JOHN MARKHAM WAS UNABLE TO FIND ANY ORIGINAL EVIDENCE OF THE NORTH 1/4 CORNER, EAST 1/4 CORNER OR THE NORTHEAST CORNER OF SECTION 9 IN 1950. MARKHAM THEN SET THE NORTH 1/4 CORNER AND NORTHEAST SECTION CORNER BY PROPORTIONATE METHODS (CS 40/259). IN HIS CORNER NOTES FOR THE NORTH-EAST CORNER OF SECTION 9, MARKHAM MENTIONS THERE IS NO EVIDENCE OF THE OAKS CALLED FOR BY FORD NOR OF THE CREEK CALLED AT ONE CHAIN SOUTH. GEORGE WENDEROTH SET THE EAST 1/4 CORNER OF SECTION 9 AT PROPORTIONATE DISTANCE IN 1957 BASED ON MARKHAM'S WORK (M 5/38). IN 1920, FRANK CAIN, DEPUTY COUNTY SURVEYOR, SEARCHED FOR THE SOUTH 1/4 CORNER OF SECTION 9 BUT DID NOT FIND ANY EVIDENCE OF THE ORIGINAL OAKS. DUE TO DIFFERENCES IN THE REPORTED DISTANCES ON COMMON LINES BETWEEN MARKHAM'S PLAT AND WENDEROTH'S PLAT, I DECIDED TO REDO THE DOUBLE PROPORTION OF THE NORTHEAST CORNER OF SECTION 9. A DILIGENT BUT UNSUCCESSFUL EFFORT WAS MADE TO FIND ORIGINAL EVIDENCE AT THE NORTH 1/4 CORNER, EAST 1/4 CORNER AND NORTHEAST CORNER OF SECTION 9, THE NORTH 1/4 CORNER OF SECTION 10 AND THE EAST 1/4 CORNER OF SECTION 4. THE PROPORTIONED CORNERS SET BY MARKHAM AND WENDEROTH FOR ALL OF THESE CORNERS WERE FOUND BUT WERE NOT USED AS CONTROL SINCE THEY WERE ALL OUT OF THEIR CALCULATED POSITION AS NOTED ON THIS PLAT. THE CONTROL FOR SETTING THE NORTH 1/4 CORNER, EAST 1/4 CORNER AND NORTHEAST CORNER OF SECTION 9 WAS THE NORTHWEST (REN-210) AND SOUTHEAST (REN-86) CORNERS OF SECTION 9, THE NORTHEAST CORNER OF SECTION 4 (REN-108) AND THE NORTHEAST CORNER OF SECTION 10 (REN-145), ALL PREVIOUSLY RE-ESTABLISHED FROM ORIGINAL BEARING TREES. ADDITIONAL CONTROL FOR THE SETTING OF THE SOUTH 1/4 CORNER AND SUBDIVISION OF SECTION 9 WAS THE SOUTHWEST CORNER (REN-142) AND WEST 1/4 CORNER (REN-141) OF SECTION 9 ALSO PREVIOUSLY RE-ESTABLISHED FROM ORIGINAL BEARING TREES.

THE BASIS OF BEARING IS A SOLAR OBSERVATION.

THIS SURVEY WAS PERFORMED IN JULY, AUGUST, AND SEPTEMBER 1993 USING A TOPCON GTS-302 TOTAL STATION TO RUN CLOSED LOOP TRAVERSES.

REGISTERED
PROFESSIONAL
LAND SURVEYOR

Mark F. Smalley

OREGON
JULY 26, 1988
MARK F. SMALLEY
2354

EXPIRES 12/31/94

COUNTY SURVEYOR FILE DATA
DO NOT REMOVE FROM OFFICE