

# RESURVEY AND SUBDIVISION OF SECTION 30, T 30 S, R 9 W, W. M., OREGON

FOR ROSEBURG RESOURCES COMPANY

DOUGLAS COUNTY SURVEYOR

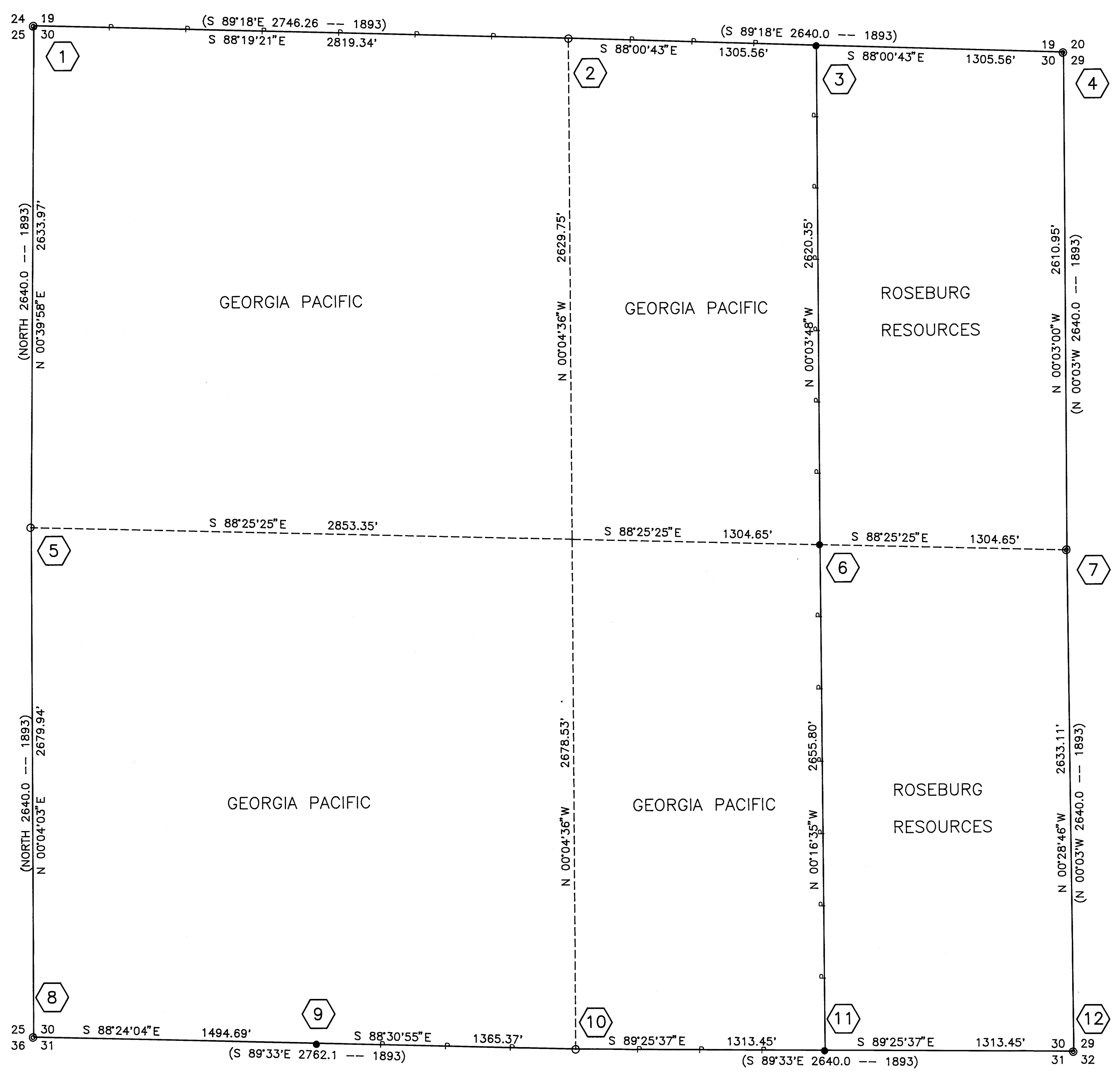
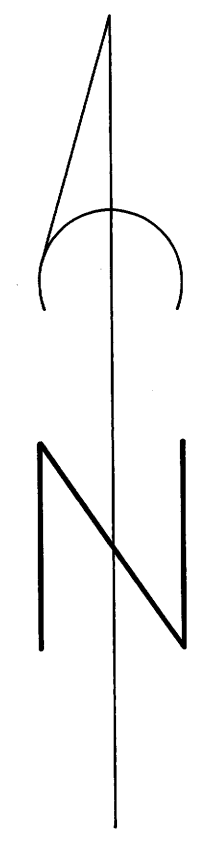
FEBRUARY 18, 1994

BY MARK F. SMALLEY  
ROSEBURG RESOURCES COMPANY  
P. O. BOX 1088  
ROSEBURG, OREGON

SCALE: 1" = 400'

### LEGEND

- ⊙ FOUND BCIP AS NOTED
- MONUMENT FOUND AS NOTED
- SET IRON ROD & ALUMINUM CAP MARKED LS 2354
- SECTION OR PROPERTY LINE
- - - SUBDIVISION OR CALCULATED LINE
- LINE MARKED WITH PAINTED BLAZES AND FENCE POSTS
- ( ) RECORD DATA



- 1 SECTION CORNER 24|19  
FOUND 1965 COUNTY BCIP OUT OF THE GROUND  
RESET FROM BEARING TREES  
BTs: 14" FIR N 52 1/2°W 19.8' SNAG, OBT  
30" CEDAR N 30°E 24.8' HEALED FACE  
12" FIR N 84°E 46.2' FOUND SCRIBE  
30" FIR S 51 1/4°E 31.0' ROTTEN STUMP, OBT  
32" FIR S 22°W 22.0' ROTTEN STUMP, OBT  
34" FIR N 27°E 12.2' ROTTEN STUMP, OBT  
SCRIBED: 12" FIR N 83°W 8.3' "S24 BT"  
8" CEDAR S 6°E 20.1' "S30 BT"  
6" CEDAR S 6°W 23.4' "S25 BT"
- 2 1/4 CORNER 19|30  
FOUND ORIGINAL STONE, 8"X7"X6" MARKED 1/4 ON NORTH,  
AND X ON TOP  
BTs: 38" CEDAR N 17 1/2°E 32.7' STUMP, OBT  
SCRIBED: 8" FIR N 4°W 13.4' "1/4 BT"  
14" FIR N 41°E 15.5' "1/4 BT"  
12" FIR EAST 13.0' "1/4 BT"  
10" FIR S 54°W 14.8' "1/4 BT"
- 3 E 1/16 CORNER 19|30  
SET 5/8"X26" IR & ALUMINUM CAP MARKED LS 2354  
SCRIBED: 14" FIR N 81°E 26.8' "1/16 BT"  
7" FIR S 71°E 26.6' "1/16 BT"
- 4 SECTION CORNER 19|20  
FOUND 1965 COUNTY BCIP  
BTs: 38" FIR N 71 1/4°W 42.2' HEALED FACE, OBT  
22" FIR N 23 3/4°E 38.9' HEALED FACE, OBT  
40" FIR S 54°E 49.2' HEALED FACE, OBT  
54" FIR S 82°W 67.8' HEALED FACE  
14" CEDAR N 46°E 26.0' "X" BLAZED ON TREE
- 5 1/4 CORNER 25|30  
FOUND ORIGINAL STONE, BROKEN, MARKED "1/4"  
BTs: 48" FIR N 50 1/2°W 30.4' SNAG, OBT  
SCRIBED: 17" FIR N 88°W 16.6' "1/4 S25 BT"  
17" FIR N 2°E 8.1' "1/4 S30 BT"  
11" FIR S 20°E 22.3' "1/4 S30 BT"  
14" FIR S 19°W 18.9' "1/4 S25 BT"
- 6 CE 1/16 CORNER SECTION 30  
SET 5/8"X26" IR & ALUMINUM CAP MARKED LS 2354  
SCRIBED: 12" FIR N 6°W 20.0' "CE 1/16 BT"  
10" FIR S 76°W 9.3' "CE 1/16 BT"
- 7 1/4 CORNER 30|29  
FOUND 1965 COUNTY BCIP  
BTs: 48" FIR STUMP S67 1/2°E 17.5' SCRIBE VISIBLE, OBT  
8" FIR S 18 1/2°E 10.7' HEALED FACE  
32" CEDAR STUMP S 32 3/4°W 20.8' SCRIBE VISIBLE, OBT  
10" FIR S 30°W 13.9' HEALED FACE  
SCRIBED: 8" FIR N 19°W 8.3' "1/4 S30 BT"  
11" FIR N 55°E 19.0' "1/4 S29 BT"
- 8 SECTION CORNER 25|30  
FOUND 1965 COUNTY BCIP  
BTs: 45" CEDAR N 68°W 9.9' STUMP, OBT  
24" CEDAR N 68°E 20.5' STUMP SCRIBE VISIBLE, OBT  
40" FIR S 50°E 16.3' STUMP SCRIBE VISIBLE  
SCRIBED: 9" FIR N 56°E 28.6' "S30 BT"  
7" FIR S 4°W 10.7' "S36 BT"  
7" FIR S 55°W 7.9' "S36 BT"
- 9 W 1/16 CORNER 30|31  
FOUND 5/8" IRON ROD  
SET ALUMINUM CAP MARKED LS 2354 ON ROD  
BTs: 36" CEDAR S 15°10'E 30.1' ROTTEN SNAG  
50" FIR S 82°W 42.0' STUMP  
SCRIBED: 6" FIR N 62°W 26.8' "1/16 BT"  
6" CEDAR EAST 30.6' "1/16 BT"
- 10 1/4 CORNER 30|31  
FOUND 5/8" IR AND ORIGINAL STONE MARKED 1/4  
BTs: 18" CEDAR N 4 1/2°W 10.6' ROTTEN SNAG  
10" FIR N 76°E 3.2' SCRIBE VISIBLE  
50" FIR N 89 1/4°W 20.3' SCRIBE VISIBLE, ORIGINAL  
LINE TREE. NOTES CALL FOR IT ON LINE EAST OF CORNER  
TREE WAS FACED AND SCRIBED BY GP SURVEY.  
SCRIBED: 8" FIR N 27°W 9.7' "1/4 BT"  
8" FIR S 41°W 7.4' "1/4 BT"
- 11 E 1/16 CORNER 30|31  
SET 5/8"X48" IR & ALUMINUM CAP MARKED LS 2354  
SCRIBED: 10" FIR S 89°E 23.0' "E 1/16 BT"  
12" FIR S 55°W 51.9' "E 1/16 BT"
- 12 SECTION CORNER 30|29  
FOUND 1965 COUNTY BCIP  
BTs: 30" CEDAR N 19 1/4°W 25.1' HEALED FACE  
16" HEMLOCK N 77 3/4°E 33.3' STUMP  
46" HEMLOCK N 72°E 50.0' HEALED FACE  
36" CEDAR S 79 1/2°E 29.0' STUMP  
24" CEDAR S 32 1/2°W 4.6' SCRIBE VISIBLE  
26" CEDAR S 73°W 4.4' HEALED FACE

### NARRATIVE

THE PURPOSE OF THIS SURVEY WAS THE SUBDIVISION OF THE NORTHEAST AND SOUTHEAST ONE-QUARTERS OF SECTION 30, T 30 S, R 9 W, W. M. IN DOUGLAS COUNTY, OREGON. PROPERTY LINES WERE BLAZED, PAINTED AND POSTED AS NOTED.

THE WEST LINE OF SECTION 30 WAS SURVEYED BY DENNIS HATHORN IN 1855. IN 1893 WILLIAM BUSHEY RESURVEYED THE WEST LINE AND SET NEW CORNERS FOR THE WEST 1/4 CORNER AND THE NW SECTION CORNER. BUSHEY ALSO RAN THE NORTH, SOUTH AND EAST LINES OF SECTION 30.

THE CONTROL FOR THIS SURVEY WAS THE FOUR SECTION CORNERS AND THE FOUR ONE-QUARTER CORNERS, ALL FOUND AS PREVIOUSLY RENEWED FROM ORIGINAL EVIDENCE, OR RENEWED THIS SURVEY FROM ORIGINAL EVIDENCE AS NOTED ON THIS PLAT. AN UNRECORDED MONUMENT SET BY GEORGIA PACIFIC FOR THE WEST 1/16 CORNER BETWEEN SECTIONS 30 AND 31 WAS USED TO CONTROL THE LINE WE MARKED BETWEEN THE 1/4 CORNER AND THE 1/16 CORNER. THIS MONUMENT WAS 2.03 FEET S 43°57'27"E FROM OUR CALCULATED POSITION FOR THE W 1/16 CORNER.

THE BASIS OF BEARING IS THE NORTH HALF OF THE EAST LINE AS RUN BY BUSHEY IN 1893.

THIS SURVEY WAS PERFORMED IN NOVEMBER AND DECEMBER, 1993 AND JANUARY AND FEBRUARY, 1994 USING A TOPCON GTS-302 TOTAL STATION TO RUN CLOSED LOOP TRAVERSES.

REGISTERED  
PROFESSIONAL  
LAND SURVEYOR

Mark F. Smalley  
OREGON  
JULY 26, 1988  
MARK F. SMALLEY  
2354

RENEWS 12/31/94

COUNTY SURVEYORS FILE DATA  
DO NOT REMOVE FROM OFFICE