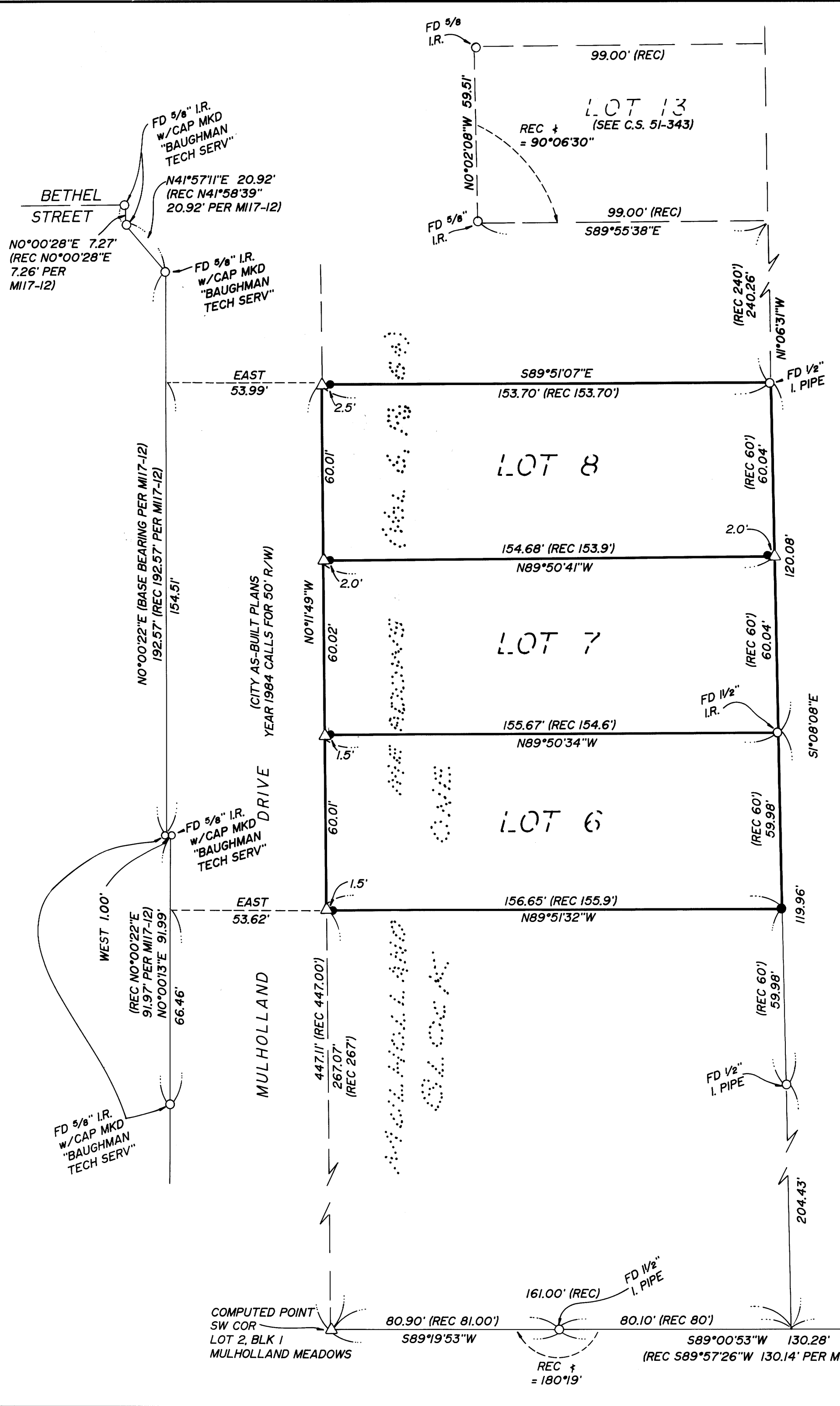


FILED

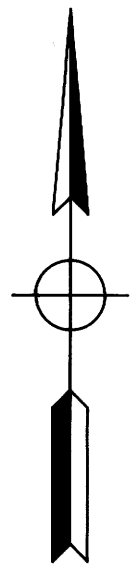
Date: 5/4/94 By: JP
This survey consists of:
Map: M118-70
Narrative:
Corner Rpt:

DOUGLAS COUNTY SURVEYOR



LEGEND

- SET 5/8" x 30" I.R. w/CAP MARKED "i.e. ENGINEERING" UNLESS NOTED OTHERWISE
- FD MONUMENTS AS NOTED
- () RECORD MEASUREMENTS PER PLAT "MULHOLLAND MEADOWS" UNLESS NOTED OTHERWISE
- △ COMPUTED POINT



NARRATIVE:

SURVEY TO MONUMENT CORNERS OF LOTS 6, 7, & 8 IN BLOCK 1, "MULHOLLAND MEADOWS" AS RECORDED IN VOLUME 6, PAGE 54 IN THE PLAT RECORDS OF DOUGLAS COUNTY, OREGON. THE EAST LINE OF SUBJECT LOTS WAS ESTABLISHED BY LOCATING THE MONUMENTS ALONG THE EAST LINE OF BLOCK 1 AS SHOWN, AND PROPORTIONING THE LOCATIONS OF SUBJECT CORNERS. THE NORTH-SOUTH LINES OF LOTS WERE ESTABLISHED BY PROPORTIONING NORTHINGS BETWEEN THE COMPUTED SOUTHWEST CORNER OF LOT 2, BLOCK 1 (PROJECTED FROM APPLYING RECORDED ANGLE FROM FOUND MONUMENTS PER M30-76) AND THE FOUND MONUMENT ON THE SOUTH LINE OF LOT 13 (PER SURVEY C.S. 51/343). THE WEST LINE OF BLOCK 1 WAS ESTABLISHED BY APPLYING RECORD DISTANCE TO THE NORTH LINE OF LOT 8 AND INVERSING TO THE COMPUTED SOUTHWEST CORNER OF LOT 2. THIS LEAVES A GAP IN THE RIGHT-OF-WAY WIDTH GIVEN PER CITY STREET PLANS OF 50 FEET AND THE EAST LINE OF THAT SURVEY ESTABLISHED PER M117-12.

FIELD CREW: NEIL HIBBS & GARY MASK
EQUIPMENT: NIKON TOTAL STATION
OFFICE: ROMEY WARE
DRAFTING: BETH MORGAN

| | | |
|--|--|--------------|
| | SURVEY | |
| | OF: LOTS 6, 7, & 8 IN BLOCK 1 "MULHOLLAND MEADOWS" IN: NW1/4 SEC 13, T27S, R6W, W.M., DOUGLAS CO., OREGON | |
| SURVEYED FOR: DINESH PATEL 1183 N.E. STEPHENS STREET ROSEBURG, OR 97470 | SURVEYED BY: 1205 S.E. Court Street Roseburg, Oregon 97470 PHONE (503) 673-0166 FAX (503) 440-9392 | |
| SCALE: 1" = 30' | DATE: APRIL 1994 | PAGE: 1 OF 1 |

COUNTY SURVEYORS FILE DATA
DO NOT REMOVE FROM OFFICE