

Date: 1/25/94 By: JP
This survey consists of:
Map: M 118-62
Narrative:
Corner Rpt: CS 63/154

DOUGLAS COUNTY SURVEYOR

NORTH

BASIS OF BEARING ASSUMED BETWEEN CORNERS #2 AND #3 PER M105-64

MAP FILE M118-62

BOUNDARY LINE SURVEY LOCATED IN THE SE 1/4, S13 AND THE NE 1/4, S.24, T.21 S., R.12 W., W.M., DOUGLAS CO., OR.

SURVEY FOR:

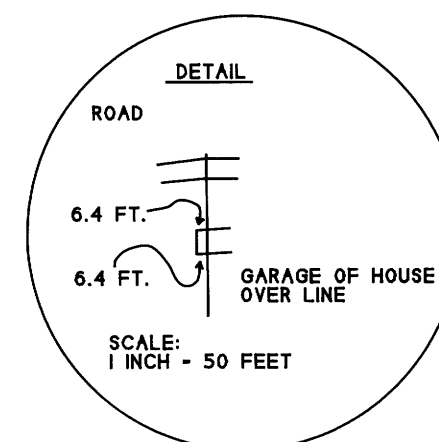
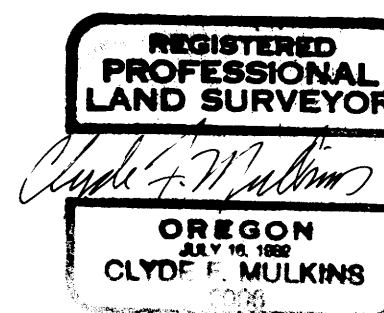
IP TIMBERLANDS OPERATING CO. LTD.
711 PORT DOCK ROAD
REEDSPORT, OR. 97467

SURVEY BY:

CLYDE F. MULKINS
TIMBER CRUISING & ENGINEERING
P.O. BOX 750
COOS BAY, OR. 97420

LEGEND

- ⊙ CORNERS FOUND AS SHOWN
- LINES PAINTED AND BLAZED



CORNER #1: FD. A 1" IRON PIPE AT THE 1/4 CORNER BETWEEN SECTIONS 24 AND 19 FROM WHICH: FD. STUMP REMAINS OF GLO SPRUCE APPROX DIA. 40" (PORTION OF STUMP WHERE FACE WOULD HAVE BEEN IS GONE) BEARS S 46°W 26.4 FT. SLOPE DIST. FD. UPROOT REMAINS OF 1891 GLO 36" HEMLOCK (1857 GLO 36" SPRUCE) BEARS S 9°E 13.2 FT. SLOPE DIST TO APPROX UPRIGHT POSITION. FD. UNRECORDED STUNTZNER BT'S: FD. A 16" ALDER BARK SCRIBED 1/4 S24 BT BEARS N 14 W 35.8 FT.; FD. 38" CEDAR WITH "X" CHOPPED INTO IT. BEARS S 17 W 26.0 FT. (TAG DIST READS 34" AT 64%); FD 35" SPRUCE WITH "X" CHOPPED INTO IT. BEARS S 49 E. 10.9 FT. (TAG READS N57 1/2°W. 11.0 FT.) :FD 19" ALDER BARK SCRIBED 1/4 S19 BT BEARS N 28° E. 31.7 FT. THIS CORNER WAS VISITED BY M.E. HARTLY, A TIMBER CRUISER FOR SCOTT PAPER CO., ON NOV 24, 1954. HARTLEY SHOWS HE FOUND A 1" IRON PIPE AT THE CORNER FROM WHICH: 38" SPRUCE STUMP BEARS S 5°E APPROX 15' WITH DOUGLAS CO. TAG: FD. 10" HEMLOCK (NOW GONE) BEARS N 18°W APPROX. 15'. YELLOW TAG HAS PRINTED NAME "WILFORD N. HAINES, DRAIN, OR". I HAVE NOT LOOKED THROUGH HAINES' UNINDEXED FIELD BOOKS IN THE DOUGLAS CO. SURVEYOR'S OFFICE. I DID NOT FIND THE 1" IRON PIPE THAT BEARS S 67°55' W 12.07 FT. PER CS 58/47.

CORNER #2: FD. AN IPTO ALUM. MONUMENT AT THE CORNER OF SECTIONS 13, 18, 19, AND 24. FROM WHICH: FD. A 19" HEMLOCK WITH A HEALED FACE. BEARS N68°W. 27.0 FT.; FD. A 20" DF STUMP WITH A HEALED FACE BEARS N72 1/2°E. 26.8 FT.; FD. A 27" DF WITH A HEALED FACE BEARS S6 1/2°W. 8.4 FT.; I SCRIBE "S13 T2IS R12W BT" ON A 7" WF. BEARS N1°W. 35.0 FT. SEE MAP FILE M 105-64. RECORD 20" DF STUMP BEARS S 62 3/4°E. 24.6 FT NOT FOUND.

CORNER #3: FD. A 2 1/2" COUNTY BRASS CAP AT THE 1/4 CORNER BETWEEN SECTIONS 13 AND 18 FROM WHICH: FD. A 39" DF STUMP WITH A HEALED FACE BEARS N80 1/2°W. 61.7 FT.; FD. A 22" SPRUCE WITH A HEALED FACE BEARS S82°E. 29.3 FT. (RECORD S83 3/4°E. 29.5 FT.); I BARK SCRIBE 1/4 S18 BT ON A 21" ALDER BEARS N41°E. 8.4 FT.; I SCRIBE 1/4 S18 BT ON AN 18" SPRUCE BEARS S47°E. 35.8 FT. SEE MAP FILE M 105-64.

CORNER A: FD. A 3/4" REBAR AND 4" X 4" WOOD POST MKD. C.R. R/W FROM WHICH I SCRIBE "R/W BT" ON A 12" DF. BEARS S26°E. 14.2 FT.

CORNER B: FD. A 3/4" REBAR. NO SUITABLE BT AVAILABLE.

CORNER C: FD. A 3/4" REBAR FROM WHICH I BARK SCRIBE "R/W BT" ON AN 11" ALDER. BEARS S79°E. 16.1 FT.

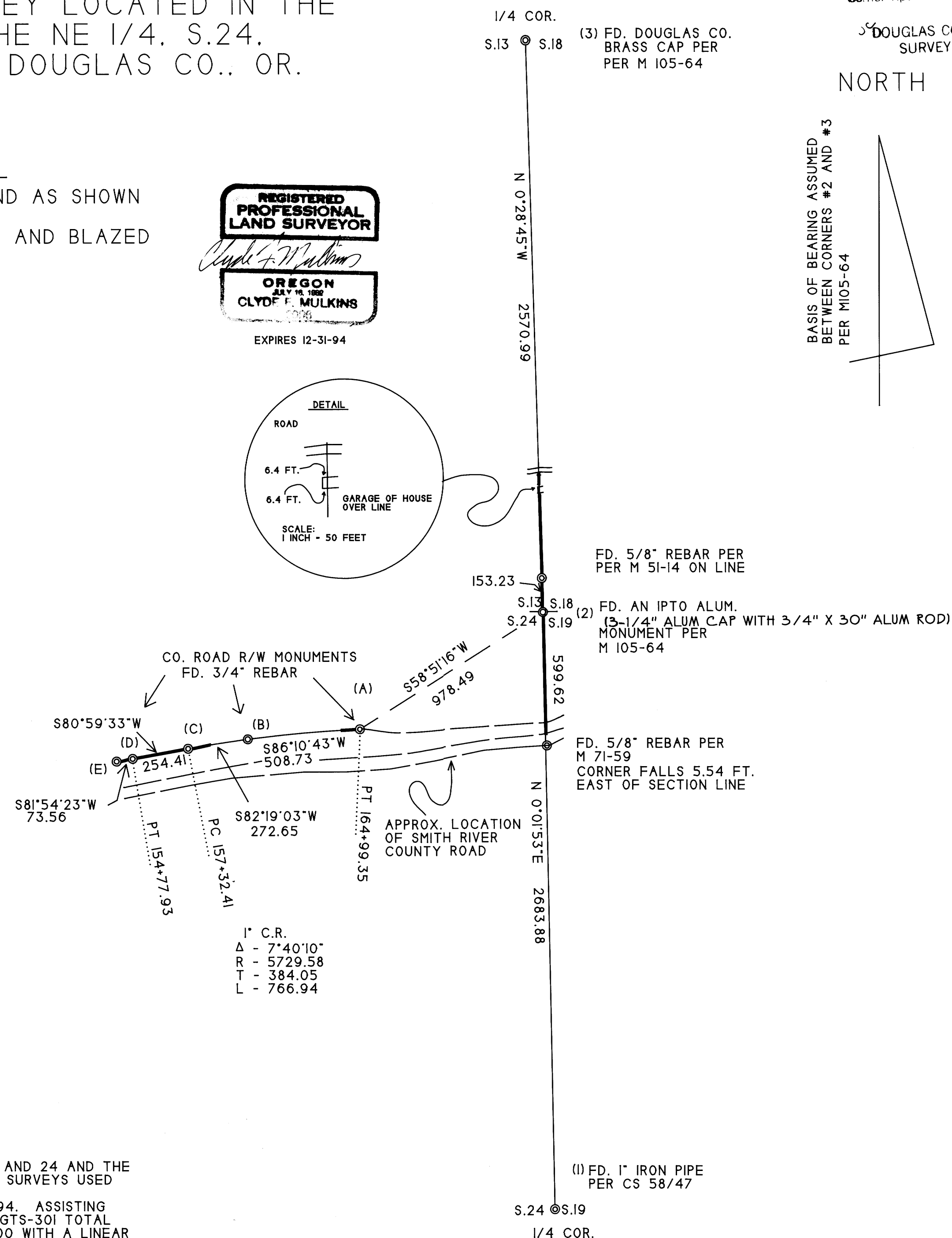
CORNER D: FD. A 3/4" REBAR AND 4" X 4" WOOD POST MKD. C.R. R/W FROM WHICH I SCRIBE "R/W BT" ON AN 11" ALDER BEARS N68°W. 17.7 FT.

CORNER E: FD. A BENT 3/4" REBAR FROM WHICH I BARK SCRIBE "R/W BT" ON AN 8" AN ALDER BEARS N64°W. 16.7 FT.

NOTE: ALL FD. R/W CORNERS HAVE A 6" ALUM. POST WITH A "LAND SURVEY MONUMENT" SIGN ATTACHED PLACED WITH IN 2.0 FT. OF THE CORNER.

NARRATIVE

THE PURPOSE OF THIS SURVEY WAS TO PAINT AND BLAZE PORTIONS OF THE EAST LINE OF SECTIONS 13 AND 24 AND THE NORTH RIGHT-OF-WAY LINE OF LOWER SMITH RIVER COUNTY ROAD NO. 48 FOR LOGGING OPERATIONS. RECORD SURVEYS USED INCLUDE: M 51-14, M71-59, M 105-64, CS 58/47, COUNTY ROAD NO. 48 JAN. 1966 SHEET 7 OF 7
THE FIELD WORK FOR THIS SURVEY BEGAN ON NOVEMBER 4, 1993 AND WAS COMPLETED JANUARY 20, 1994. ASSISTING ME WITH THIS SURVEY WERE TROY RAMBO, FLOYD VANDERVELDEN "L.S. 1047", AND MATT MARTIN. A TOPCON GTS-301 TOTAL STATION WAS USED TO PREFORM THE FIELD WORK. THE UNADJUSTED ERROR OF CLOSURE WAS ABOVE 1/30,000 WITH A LINEAR ERROR OF 0.10 FT AND ANGULAR ERROR OF 5 SECONDS.



1" C.R.
Δ - 7°40'10"
R - 5729.58
T - 384.05
L - 766.94

(1) FD. 1" IRON PIPE PER CS 58/47

SCALE 1" = 400'
JANUARY 18, 1994

COUNTY SURVEYORS FILE DATA
DO NOT REMOVE FROM OFFICE

MAP FILE M118-62