

BOUNDARY LINE SURVEY LOCATED IN THE
W 1/2. SEC. 36. T.23 S.. R.7 W.. W.M.. DOUGLAS CO.. OR.

SURVEY FOR:
IP TIMBERLANDS OPERATING CO., LTD
711 PORT DOCK ROAD
REEDSPORT, OR. 97467

ROSEBURG RESOURCES CO.
P.O. BOX 1088
ROSEBURG, OR. 97470

SURVEY BY:
CLYDE F. MULKINS
TIMBER CRUISING & ENGINEERING
P.O. BOX 750
COOS BAY, OR. 97420

FILED

Date: 4/22/94 By: JF
This survey consists of:
Map: M118-61
Narrative:
Corner Rpt:

DOUGLAS COUNTY
SURVEYOR



LEGEND

- ⊙ FOUND CORNERS AS SHOWN
- △ 6" ALUM. POSTS PER NARRATIVE - THESE LINES ARE BLAZED, PAINTED, AND FLAGGED
- ▲ LINE CROSSING POSTS
- () CORNER REF. NO.
- [] BLM MEASUREMENTS
- <<< RIDGES
- ← CREEK
- ══ ROAD
- ⋯ CAT ROAD
- |||| ROCK BLUFF

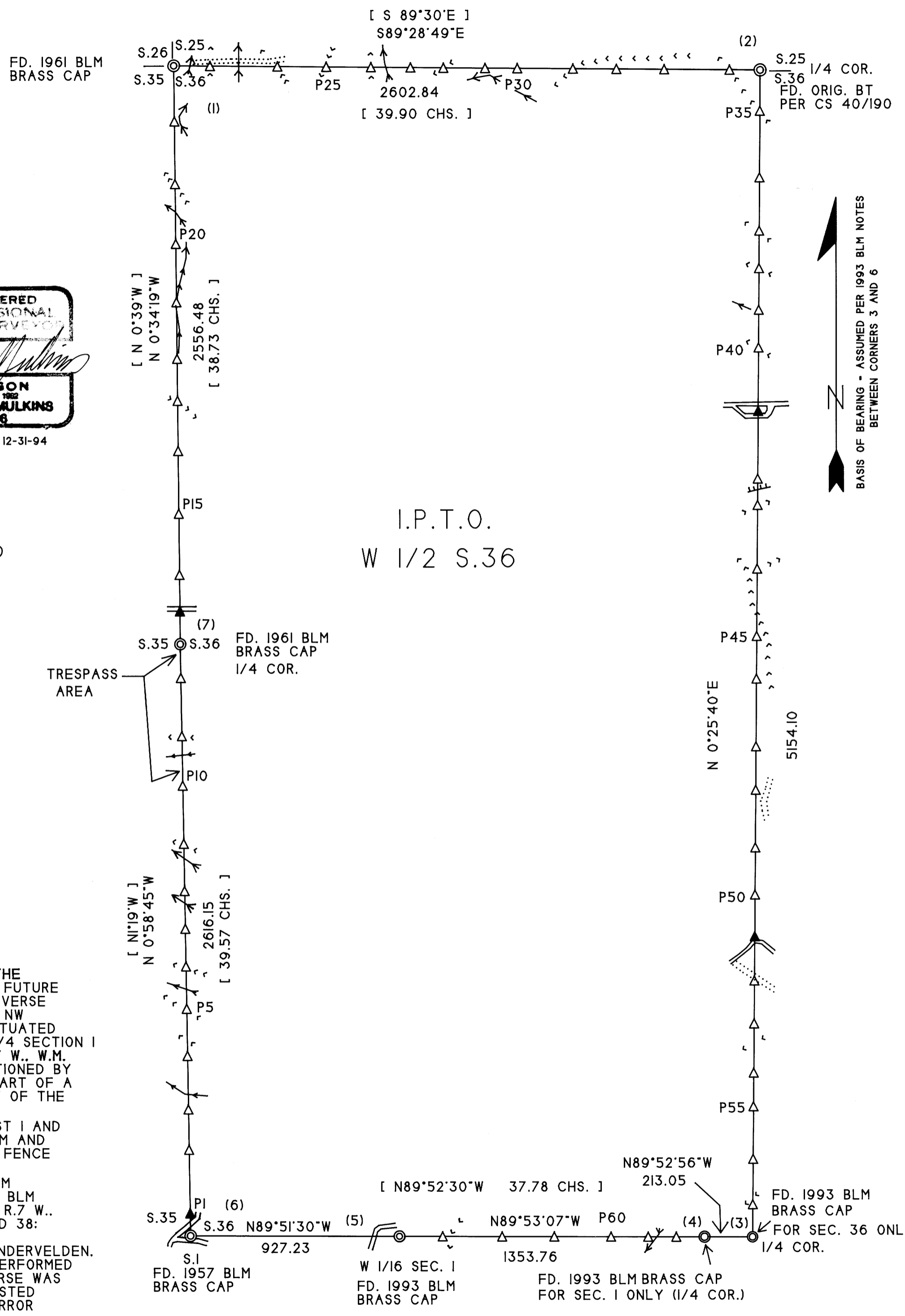
NARRATIVE

THE PURPOSE OF THIS SURVEY WAS TO ESTABLISH AND MARK THE BOUNDARIES OF THE W 1/2 SECTION 36, T.23 S., R.7 W., W.M. FOR FUTURE LOGGING OPERATIONS. THIS SURVEY WAS BASED ON A CLOSED TRAVERSE AROUND THE PROPERTY BETWEEN EXISTING CORNERS. THE SW AND NW SECTION CORNERS AND THE W 1/4 AND N 1/4 CORNERS ARE PERPETUATED GLO CORNER POSITIONS. THE S 1/4 OF SECTION 36 ONLY, THE N 1/4 SECTION 1, T.24 S., R.7 W., W.M. ONLY AND THE W 1/16 SECTION 1, T.24 S., R.7 W., W.M. ONLY ALONG THE SOUTH LINE OF SECTION 36 HAVE BEEN REPOSITIONED BY PROPORTION MEASUREMENT BY THE BLM IN A 1992 AND 1993, AS PART OF A CORRECTIVE SURVEY. WE RECEIVED AN UNOFFICIAL ADVANCE COPY OF THE BLM SURVEY WHICH WAS ACCEPTED FOR THIS SURVEY.

A FENCE WAS FOUND ALONG THE PROPERTY LINE BETWEEN POST 1 AND A POINT APPROX. 50 FT. NORTH OF POST 8. THE LANDOWNERS, BLM AND IP TIMBERLANDS OPERATING COMPANY, LTD., DO NOT ACCEPT THIS FENCE AS MARKING THE PROPERTY LINE.

RECORD SURVEYS PERPETUATING CORNER EVIDENCE INCLUDE: BLM DEPENDENT RESURVEY OF A PORTION S. BDY. T.23 S., R.7 W., 1957; BLM DEPENDENT RESURVEY OF A PORTION SUBDIVISIONAL LINES T.23 S., R.7 W., 1961; GOV'T CORNER RENEWALS T.23 S., R.7 W., NO. 34, 36, 37, AND 38; CS 40/190; MAP FILE M30-15.

ASSISTING ME WITH THIS SURVEY WERE TROY RAMBO, FLOYD VANDERVELDEN, LS 1047, MATT MARTIN, AND JASON SMITH. THE FIELD WORK WAS PERFORMED BETWEEN SEPTEMBER 30 AND JANUARY 4, 1994. THE FIELD TRAVERSE WAS PERFORMED WITH A TOPCON GTS-301 TOTAL STATION. THE UNADJUSTED CLOSURE WAS 1/6900 WITH 120 POINTS IN 17000 FEET. ANGULAR ERROR WAS 0'01'27".



I.P.T.O.
W 1/2 S.36

CORNER NOTES

CORNER #1: FD. A 1961 BLM BRASS CAP AT THE CORNER OF SECTIONS 26, 25, 35, AND 36 FROM WHICH: FD. A 36" DF WITH A HEALED FACE BEARS N 3°E, 28.6 FT. (RECORD N 1°W, 44 LKS.); FD. A 23" CEDAR WITH A HEALED FACE BEARS N66°E, 26.6 FT. (RECORD N66 1/4°E, 42 LKS.); FD. A 17" CEDAR WITH A HEALED FACE BEARS S45°E, 30.8 FT. (RECORD S49 3/4°E, 49 LKS.); FD. A 52" DF WITH A HOLE CHOPPED IN FACE BEARS S33°W, 27.8 FT. (RECORD S30°W, 43 LKS.)

CORNER #2: SET AN I.P.T.O. ALUM. MONUMENT (3/4" X 3/6" ALUM. ROD AND A 3" ALUM. CAP STAMPED "LS 2006") AT THE CORNER BETWEEN SECTIONS 25 AND 36 FROM WHICH: FD. A 27" DF WITH VISIBLE BARK SCRIBES BEARS DUE SOUTH, 5.9 FT.; 1 SCRIBE "1/4 S25 BT" ON A 13" DF BEARS N49°E, 15.4 FT.; 1 SCRIBE "1/4 S25 BT" ON A 10" DF BEARS N69°W, 14.9 FT.; 1 SCRIBE "1/4 S25 BT" ON A 14" DF BEARS N10°W, 11.4 FT.; FD. A WINDFALL DF NOTED BY KERR CS 40/190 N20°E, 36 LKS.

CORNER #3: FD. A 1993 BLM BRASS CAP AT THE 1/4 CORNER OF SECTION 36 ONLY FROM WHICH: FD. A 19" WF WITH A HEALED FACE BEARS N 9°E, 78 LKS.; FD. A 7" WF MARKED WITH AN "X BT" BEARS N34°W, 67 LKS.

CORNER #4: FD. A 1993 BLM BRASS CAP AT THE 1/4 CORNER OF SECTION 1 ONLY FROM WHICH: FD. AN 8" DF WITH VISIBLE SCRIBES BEARS S77°E, 30 LKS.; FD. A 23" DF WITH VISIBLE SCRIBES BEARS S88°W, 57 LKS.

CORNER #5: FD. A 1993 BLM BRASS CAP AT THE W 1/16 SECTION 1 ONLY FROM WHICH: FD. A 16" WF WITH VISIBLE SCRIBES BEARS S24°E, 4 LKS.; FD. A 14" WF WITH VISIBLE SCRIBES BEARS S59°W, 5 1/2 LKS.

CORNER #6: FD. A 1957 BLM BRASS CAP AT THE CORNER OF SECTIONS 35 AND 36 ONLY FROM WHICH: FD. A DF STUMP, NO MARKS, BEARS N80°W, 33 LKS.; FD. A 13" DF WITH VISIBLE SCRIBES BEARS N80°W, 47 LKS.; FD. A 24" CEDAR WITH A HEALED BLAZE BEARS N34°E, 205 LKS.; A STEEL FENCE CORNER POST BEARS N13°E, 3.6 FT.

CORNER #7: FD. A 1961 BLM BRASS CAP AT THE 1/4 CORNER BETWEEN SECTIONS 35 AND 36 FROM WHICH: FD. A 15" DF SNAG 25 FT. TALL WITH A HEALED FACE BEARS S24°E, 22.3 FT. (RECORD S28 1/4°E, 34 LKS.); FD. A 35" DF STUMP WITH OPEN FACE BEARS S79°W, 14.9 FT.; FD. A 29" DF STUMP WITH A HEALED FACE BEARS N46°W, 29.4 FT. (RECORD N48 3/4°W, 46 LKS.); 1 SCRIBE "1/4 S36 BT" ON A 29" DF BEARS N77°E, 56.5 FT.

LINE POSTING NOTES

POST	DIR.	DIST.	TO	TREE	REFERENCE BEARS	DIST.
1	S	99	SW SEC.	16" DF	N39°W	15.2'
2	S	381		11" DF	N38°W	1.7'
3	S	559		11" DF	S81°W	5.0'
4	S	796		12" WF	N74°E	14.7'
5	S	1004		8" DF	S41°E	4.3'
6	S	1191		8" DF	S36°W	3.4'
7	S	1358		6" WF	S19°W	6.8'
8	S	1525		12" DF	N53°E	13.1'
9	S	1734		12" DF	S66°E	10.4'
10	S	1991		37" DF	S68°E	9.4'
11	S	2210		17" DF	N88°E	16.6'
12	S	2465		57" DF	N39°E	35.6'
13	S	160	W 1/4	34" DF	S 2°W	16.8'
14	S	307		10" WF	N85°E	5.5'
15	S	577		27" DF	S61°E	19.3'
16	S	855		13" DF	S20°E	6.9'
17	S	1076		15" DF	N81°E	9.9'
18	S	1262		24" WF	N70°E	6.7'
19	S	1512		22" WH	N58°E	18.0'
20	S	1770		35" DF	N69°E	6.1'
21	S	2034		21" WF	N84°E	14.2'
22	S	2311		20" WH	N52°E	4.3'
23	W	161	NW SEC	14" WH	S88°E	4.4'
24	W	460		8" WH	S71°E	10.0'
25	W	677		20" WH	N64°W	21.0'
26	W	875		14" DF	S58°E	1.3'
27	W	1051		15" DF	N49°E	11.5'
28	W	1197		16" DF	S18°E	14.0'
29	W	1382		29" DF	S36°W	10.7'
30	W	1525		21" MADRONE	N72°E	5.8'
31	W	1772		36" DF	N 9°W	17.0'
32	W	1965		17" DF	N 8°E	10.3'
33	W	2177		15" DF	N79°E	4.6'
34	W	2467		13" DF	S51°W	2.5'
35	N	180	N 1/4	16" DF	N48°W	4.1'
36	N	474		16" DF	S65°W	11.7'
37	N	709		12" DF	S10°E	10.2'
38	N	875		10" DF	N71°W	9.4'
39	N	1059		10" DF	S55°W	3.9'
40	N	1225		9" DF	S87°W	6.4'
41	N	1506		15" DF	N38°W	12.4'
42	N	1804		39" WH	N59°W	33.6'
43	N	1921		16" WF	N59°E	1.6'
44	N	2202		21" WF	S45°E	11.6'
45	N	2500		11" DF	S52°W	5.9'
46	N	2688		17" DF	N48°W	3.1'
47	N	2987		14" DF	S60°W	8.1'
48	N	3179		18" DF	N 1°W	17.1'
49	N	3433		9" DF	S14°W	2.2'
50	N	3642		18" DF	N30°E	3.1'
51	N	3826		13" WF	N 1°E	17.7'
52	N	4022		11" WF	S15°E	16.7'
53	N	4211		25" DF	N32°E	3.3'
54	N	4428		15" DF	S40°W	5.8'
55	N	4577		16" DF	N12°W	13.0'
56	N	4809		9" DF	S79°E	7.7'
57	N	5010		14" DF	N 7°W	40.2'
58	E	338	S 1/4	7" DF	N 7°W	10.0'
59	E	463		11" DF	N83°W	11.1'
60	E	628		18" WF	N31°W	11.8'
61	E	880		11" DF	N81°E	10.8'
62	E	1111		11" DF	S76°W	2.6'
63	E	1375		14" DF	N21°W	8.6'

SCALE 1" = 400'
JANUARY 4, 1994

COUNTY SURVEYORS FILE DATA
DO NOT REMOVE FROM OFFICE

MAP FILE M118-61