

COUNTY SURVEYORS FILE DATA
DO NOT REMOVE FROM OFFICE

Date: 4-18-94 By: JB
This survey consists of:
Map: M118-60
Narrative:
Corner Rpt:

DOUGLAS COUNTY
SURVEYOR

- NARRATIVE -

THIS SURVEY WAS MADE IN NOVEMBER AND DECEMBER OF 1992, NOVEMBER OF 1993 AND MARCH OF 1994 BY DANIEL W. BAKER OF BAKER AND ASSOCIATES, SURVEYORS. THE PURPOSE OF THIS SURVEY WAS TO LOCATE AND MARK IN THE FIELD, SOME OF THE PROPERTY LINES OF THE LAND OWNED BY WEYERHAEUSER COMPANY IN THE NORTHWEST 1/4 OF SECTION 18, T23S, R5W, W.M.. BEARINGS FOR THIS SURVEY WERE BASED ON A SOLAR OBSERVATION. RANDOM THEODOLITE AND E.D.M. TRAVERSES WITH A MINIMUM ERROR OF CLOSURE OF 1" IN 10000', WERE RUN BETWEEN FOUND CORNERS AND USED FOR CONTROL. THE NORTHWEST CORNER AND THE WEST 1/4 CORNER WERE SET IN A 1943 G.L.O. DEPENDENT RESURVEY. THE SOUTHWEST, SOUTHEAST, NORTHEAST AND THE EAST 1/4 CORNER WERE ORIGINAL CORNERS MONUMENTED AS NOTED ON THIS PLAT. THE NORTH AND SOUTH 1/4 CORNERS WERE SEARCHED FOR BUT NOT FOUND. THE POSITION FOR THE NORTH 1/4 CORNER WAS DETERMINED (BUT NOT SET) BY SINGLE PROPORTION AS PER THE ORIGINAL PLAT. THE SOUTH 1/4 CORNER WAS SET BY SINGLE PROPORTION AS PER THE ORIGINAL PLAT. THE POSITION FOR THE CENTER 1/4 CORNER WAS DETERMINED (BUT NOT SET) AT THE POINT OF INTERSECTION OF THE NORTH-SOUTH AND EAST-WEST CENTERLINES. THE POSITION FOR THE CENTER-WEST 1/16 CORNER WAS DETERMINED (BUT NOT SET) AT PROPORTIONATE DISTANCE BETWEEN THE POSITION FOR THE CENTER 1/4 CORNER AND THE WEST 1/4 CORNER. THE POSITION FOR THE CENTER-NORTH 1/16 CORNER WAS DETERMINED (BUT NOT SET) AT MIDPOINT BETWEEN THE POSITION FOR THE CENTER 1/4 CORNER AND THE POSITION FOR THE NORTH 1/4 CORNER. THE POSITION FOR THE NORTH 1/16 CORNER BETWEEN SECTIONS 13 & 18 WAS DETERMINED (BUT NOT SET) AT MIDPOINT BETWEEN THE WEST 1/4 CORNER AND THE NORTHWEST SECTION CORNER. THE NORTHWEST 1/16 CORNER WAS SET AT THE POINT OF INTERSECTION OF THE NORTH-SOUTH AND EAST-WEST CENTERLINES OF THE NORTHWEST 1/4. A RANDOM TRAVERSE LINE WAS RUN ALONG THE PROPERTY LINE THAT WAS TO BE MARKED. OFFSETS FROM THE RANDOM TRAVERSE LINE TO THE TRUE PROPERTY LINE WERE CALCULATED AND USED TO DETERMINE THE POSITION OF THE TRUE PROPERTY LINE IN THE FIELD. THE TRUE PROPERTY LINE WAS MARKED BY BLAZING TREES (BLAZES NOTCHED AND PAINTED RED) ON BOTH SIDES OF THE TRUE LINE. THE RIGHT OF WAY OF THE 60 FOOT ACCESS ROAD WAS DETERMINED FROM THE DOUGLAS COUNTY RECORDERS NO. 74-6449, RECORDED MAY 5, 1974. ALL CORNERS SET IN THIS SURVEY WERE MONUMENTED WITH 2" X 42" IRON PIPES WITH BRASS CAPS MARKED AS NOTED ON THIS PLAT.

BASIS OF BEARING: SOLAR OBSERVATION

LEGEND

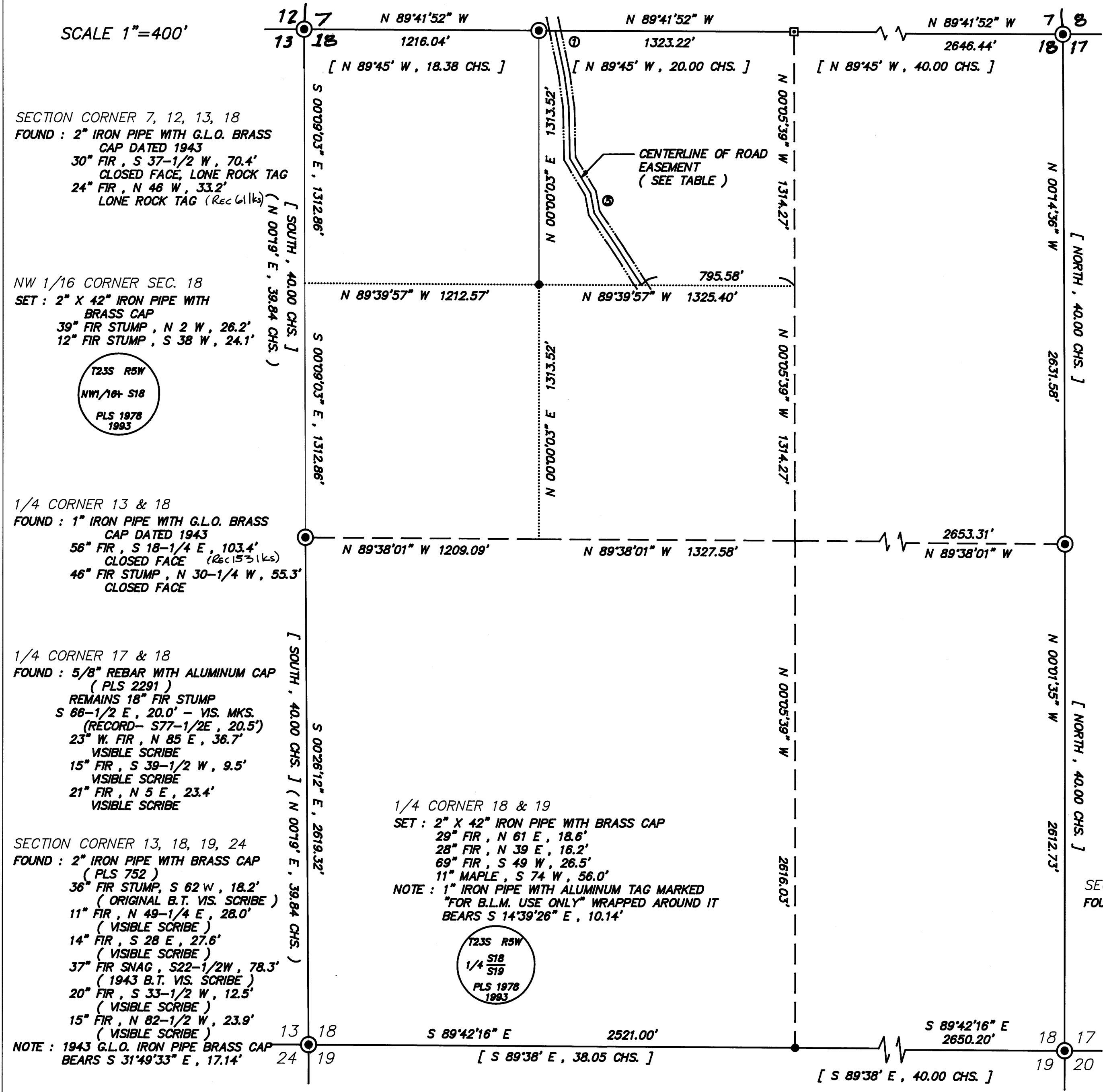
- ⊙ - CORNERS FOUND (AS NOTED)
- - CORNERS SET (2" X 42" IRON PIPE WITH BRASS CAP)
- - CALCULATED POINT (NOT SET)
- - PROPERTY LINE
- [] - RECORD DATA - G.L.O. 1853
- () - RECORD DATA - G.L.O. 1943 DEPENDENT RESURVEY

REGISTERED
PROFESSIONAL
LAND SURVEYOR
Daniel W. Baker
OREGON
JULY 16, 1982
DANIEL W. BAKER
1978
EXPIRES 12/31/95

SURVEY IN
NW 1/4 SECTION 18, T23S, R5W, W.M.
DOUGLAS COUNTY, OREGON
CLIENT: WEYERHAEUSER COMPANY
DRAWN BY: DLP
DATE: 3/15/94
FILE: WC230518
BAKER AND ASSOCIATES, SURVEYORS
1385 OAK STREET-SUITE 3 EUGENE, OREGON
(503) 343-7243

SECTION CORNER 7, 8, 17, 18
FOUND : 3/4" REBAR MKD. "LS 1808" ON TOP
8" FIR , N 79-1/2 E , 6.9' - VISIBLE SCRIBE
9" FIR , S 22-1/2 E , 7.5' - VISIBLE SCRIBE
6" FIR , S 22-1/2 W , 23.4' - VISIBLE SCRIBE
7" MADRONE , N 29-1/2 W , 20.2' - BARK SCRIBED

WEST 1/16 CORNER SECS. 7 & 18
FOUND : 2" X 42" IRON PIPE WITH BRASS CAP
11" FIR , N 20 E , 30.9'
16" FIR , S 45 E , 89.3'
NOTE: CORNER SET IN SURVEY BY THIS FIRM
FILED ON MARCH 15, 1994



SECTION CORNER 7, 12, 13, 18
FOUND : 2" IRON PIPE WITH G.L.O. BRASS CAP DATED 1943
30" FIR , S 37-1/2 W , 70.4'
CLOSED FACE, LONE ROCK TAG
24" FIR , N 46 W , 33.2'
LONE ROCK TAG (Rec 611k)

NW 1/16 CORNER SEC. 18
SET : 2" X 42" IRON PIPE WITH BRASS CAP
39" FIR STUMP , N 2 W , 26.2'
12" FIR STUMP , S 38 W , 24.1'

T23S R5W
NW1/16 S18
PLS 1978
1993

1/4 CORNER 13 & 18
FOUND : 1" IRON PIPE WITH G.L.O. BRASS CAP DATED 1943
56" FIR , S 18-1/4 E , 103.4'
CLOSED FACE (Rec 1531ks)
46" FIR STUMP , N 30-1/4 W , 55.3'
CLOSED FACE

1/4 CORNER 17 & 18
FOUND : 5/8" REBAR WITH ALUMINUM CAP (PLS 2291)
REMAINS 18" FIR STUMP
S 66-1/2 E , 20.0' - VIS. MKS.
(RECORD- S77-1/2E , 20.5')
23" W. FIR , N 85 E , 36.7'
VISIBLE SCRIBE
15" FIR , S 39-1/2 W , 9.5'
VISIBLE SCRIBE
21" FIR , N 5 E , 23.4'
VISIBLE SCRIBE

SECTION CORNER 13, 18, 19, 24
FOUND : 2" IRON PIPE WITH BRASS CAP (PLS 752)
36" FIR STUMP, S 62 W , 18.2'
(ORIGINAL B.T. VIS. SCRIBE)
11" FIR , N 49-1/4 E , 28.0'
(VISIBLE SCRIBE)
14" FIR , S 28 E , 27.6'
(VISIBLE SCRIBE)
37" FIR SNAG , S22-1/2W , 78.3'
(1943 B.T. VIS. SCRIBE)
20" FIR , S 33-1/2 W , 12.5'
(VISIBLE SCRIBE)
15" FIR , N 82-1/2 W , 23.9'
(VISIBLE SCRIBE)

NOTE : 1943 G.L.O. IRON PIPE BRASS CAP BEARS S 31'49"33" E , 17.14'

1/4 CORNER 18 & 19
SET : 2" X 42" IRON PIPE WITH BRASS CAP
29" FIR , N 61 E , 18.6'
28" FIR , N 39 E , 16.2'
69" FIR , S 49 W , 26.5'
11" MAPLE , S 74 W , 56.0'
NOTE : 1" IRON PIPE WITH ALUMINUM TAG MARKED "FOR B.L.M. USE ONLY" WRAPPED AROUND IT BEARS S 14'39"26" E , 10.14'

T23S R5W
1/4 S18
PLS 1978
1993

MAP FILE M118-60

MAP FILE M118-60