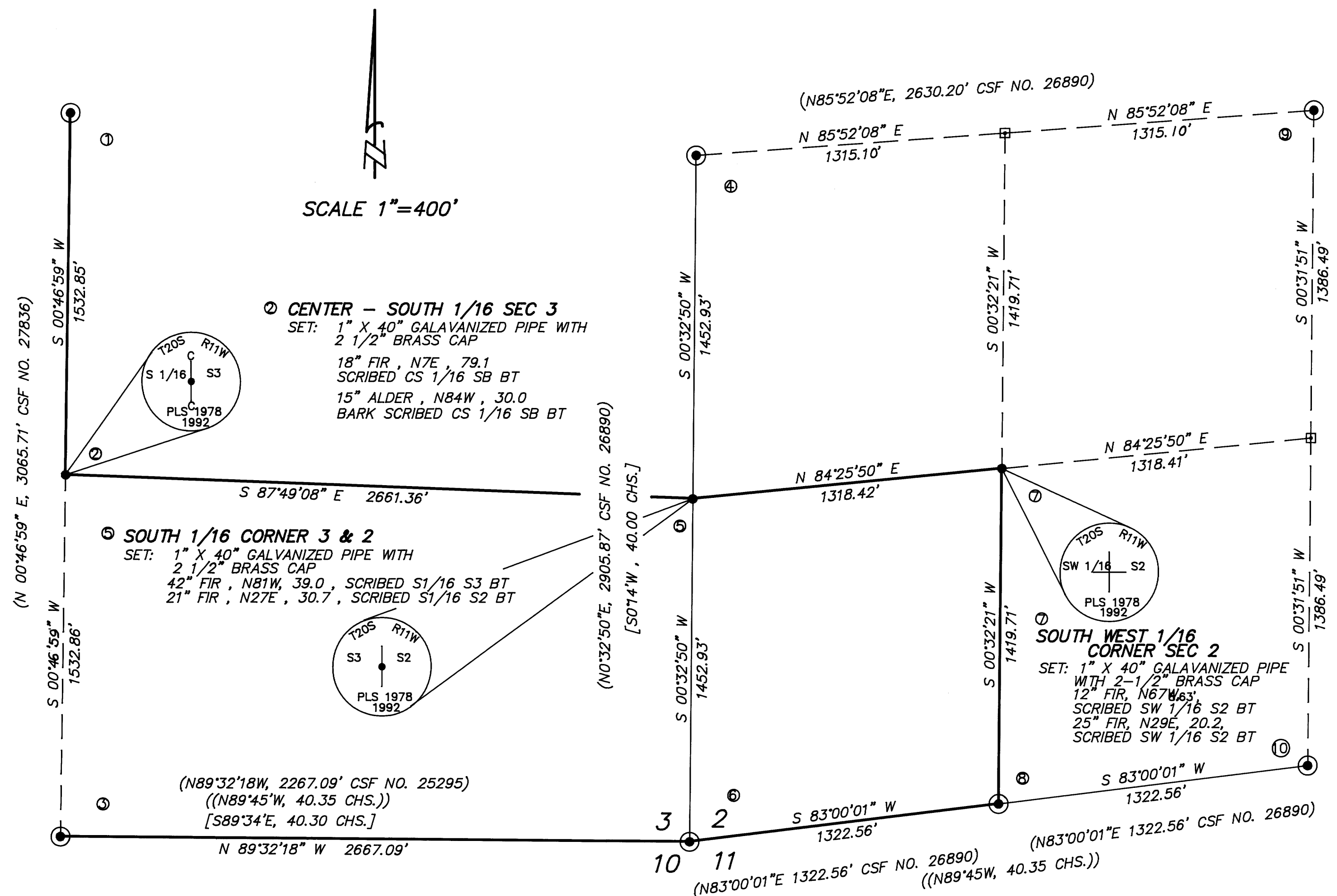


88
JC
JC



NARRATIVE

THIS SURVEY WAS MADE IN OCTOBER AND NOVEMBER OF 1992 AND APRIL 1993 BY DANIEL W. BAKER OF PEEL AND BAKER LAND SURVEYING, INC. THE PURPOSE OF THIS SURVEY WAS TO LOCATE AND MARK IN THE FIELD THE PROPERTY OF DAVIDSON INDUSTRIES IN THE SOUTHWEST 1/4 OF SECTION 2 AND THE SOUTH 1/2 OF SECTION 3, T20S, R11W, W.M. A KERN K1S AND DM502 EDM WAS USED TO PERFORM THIS SURVEY, WITH A MINIMUM ERROR OF CLOSURE OF 1 IN 5000. ALL CONTROLLING CORNERS USED IN THIS SURVEY WERE TIED COUNTY SURVEYS M97-39, M97-64, M103-78 AS RECORDED IN DOUGLAS COUNTY SURVEYORS OFFICE AND CSF NO. 25295 IN LANE COUNTY. ALL PROPERTY LINES WERE MARKED BY BLAZING AND PAINTING TREES ON EITHER SIDE OF THE PROPERTY LINE AND PLACING RED RIBBON ALONG THE TRUE PROPERTY LINE. ALL CORNERS MONUMENTED IN THIS SURVEY WERE SET ACCORDING TO THE "BUREAU OF LAND MANAGEMENT MANUAL OF INSTRUCTION - 1973," AND EACH CORNER WAS MONUMENTED WITH A 1" X 40" GALVANIZED PIPE WITH A 2 1/2" BRASS CAP MARKED AS PER "MANUAL OF INSTRUCTION" AND ALSO MARKED "PLS 1978."

REGISTERED
PROFESSIONAL
LAND SURVEYOR

Daniel W. Baker
OREGON
JULY 16, 1982
DANIEL W. BAKER
1978

EXPIRES 12/31/93

(N 00'46'59" E, 3065.71' CSF NO. 27836)
(N 00'32'50" E, 2905.87' CSF NO. 26890)
(N 83'00'01" E, 1322.56' CSF NO. 26890)
(N 89'45'W, 40.35 CHS.)
(N 83'00'01" E, 1322.56' CSF NO. 26890)
(N 89'45'W, 40.35 CHS.)
(N 83'00'01" E, 1322.56' CSF NO. 26890)
(N 89'45'W, 40.35 CHS.)

BASIS OF BEARING: SOLAR OBSERVATION as per M97-39

LEGEND

- ⊙ - CORNERS FOUND (AS NOTED)
- - CORNERS SET AS SHOWN
- - CALCULATED POINT (NOT SET)
- - PROPERTY LINE
- [] - H.E.S. 190 BEARING AND DISTANCE
- () - RECORD DATA - SURVEY
- (()) - GLO BEARING AND DISTANCE

① CENTER 1/4 SECTION 3
FND: 1-1/2" X 40" IRON PIPE WITH BRASS CAP - CS 25295
26" FIR, N24E, 40.9'
20" FIR, S88 1/2W, 22.7'

② 1/4 CORNER 3 & 10
FND: 1-1/4" IRON PIPE WITH DOUGLAS CO. BRASS CAP "1970"
48" FIR, N54W, 28.4, (H.E.S. 190 B.T.)
33" FIR, S19W, 33.2, (H.E.S. 190 B.T.)
15" FIR, N70W, 10.4, (DOUGLAS CO. B.T.)

④ 1/4 CORNER 2 & 3
FND: 40" FIR FOR 1/4 CORNER
1-1/2" IRON PIPE WITH BRASS CAP MKD. "W.C." - S0'32'50"W, 4.00'(C.S.25295)
25" FIR, S54E, 41.0' (SCRIBED "X")
40" FIR, S77W, 15.1' (SCRIBED "X") (BRG. AND DIST. FROM W.C.)

⑥ SECTION CORNER 2, 3, 10, 11
FND: 1-1/4" IRON PIPE WITH DOUGLAS CO. BRASS CAP "1970"
27" FIR, N67-1/4E, 20.3'
33" FIR, N89-1/2E, 30.0'
21" FIR, S37E, 24.7'
37" FIR, S88-1/2W, 56.9'
27" FIR, N18-3/4W, 11.0'
U.S.F.S. ALUM. MON., S86'16'55"W, 44.87' (REF. MON.)

⑧ W 1/16 CORNER 2 & 11
FND: U.S.F.S. ALUM. MON. (C.S. 58/274)
17" FIR, N60-1/2E, 21.7'
29" FIR, S7-1/2E, 19.7'
U.S.F.S. ALUM. MON., S26'29'36"E, 40.80'
(REFERENCE MONUMENT)

⑨ CTR. 1/4 SECTION 2
FND: 1-1/2" X 36" IRON PIPE WITH BRASS CAP "1984"
36" FIR STUMP, N67W, 75.9'
36" FIR, S32W, 36.3'

⑩ 1/4 CORNER 2 & 11
FND: 2-1/2" BRASS CAP CEMENTED IN ROCK FACE
22" ALDER, N76-1/2E, 37.3', (BARK SCRIBED)
20" FIR, S48-3/4W, 78.4'

COUNTY SURVEYORS FILE DATA
DO NOT REMOVE FROM OFFICE

| | |
|-------------------------------------|---------------------------------|
| SURVEY IN | |
| SE 1/4, SECTION 3, T20S, R11W, W.M. | |
| AND | |
| SW 1/4, SECTION 2, T20S, R11W, W.M. | |
| DOUGLAS COUNTY, OREGON | |
| CLIENT: DAVIDSON INDUSTRIES, INC. | |
| DRAWN BY: MSD | PEEL BAKER LAND SURVEYING, INC. |
| DATE: 5/29/93 | 1385 OAK STREET - SUITE 3 |
| FILE: D11201103 | EUGENE, OREGON (503) 343-7243 |

REVISED: 11/12/93