

"A" C.E. 1/16 CORNER SECTION 26

SET 3/4" x 30" ALUM. ROD WITH 3/4" ALUM. CAP.  
(BURIED PURPLE M.M. UNDER 30" ALUM. ROD)  
10" FIR, S53°E, 14.9' (SCRIBED/PAINTED RED)  
12" FIR, N54°E, 20.8' (SCRIBED/PAINTED RED)

"B" CENTER 1/4 CORNER SECTION 26

SET 3/4" x 30" ALUM. ROD WITH 3/4" ALUM. CAP.  
(BURIED PURPLE M.M. UNDER 30" ALUM. ROD)  
14" FIR, S39°W, 18.9' (SCRIBED/PAINTED RED)  
16" FIR, N38°W, 25.8' (SCRIBED/PAINTED RED)  
18" FIR, N46°E, 10.4' (SCRIBED/PAINTED RED)  
22" HEM, S53°E, 10.8' (SCRIBED/PAINTED RED)

"C" C.S. 1/16 CORNER SECTION 26

SET 3/4" x 30" ALUM. ROD WITH 3/4" ALUM. CAP.  
(BURIED PURPLE M.M. UNDER 30" ALUM. ROD)  
14" FIR, S44°W, 12.8' (SCRIBED/PAINTED RED)  
22" FIR, N09°E, 17.1' (SCRIBED/PAINTED RED)

"D" WEST 1/16 CORNER SECTION 26

SET 3/4" x 30" ALUM. ROD WITH 3/4" ALUM. CAP FOR  
WITNESS CORNER. TRUE CORNER BEARS N88°31'W,  
30.00'. BURIED PURPLE M.M. UNDER 30" ALUM. ROD.  
8" FIR, N88°E, 22.4' (SCRIBED/PAINTED RED)  
24" FIR, S04°W, 10.6' (SCRIBED/PAINTED RED)

"E" SOUTH 1/16 CORNER SECTION 26

SET 3/4" x 30" ALUM. ROD WITH 3/4" ALUM. CAP.  
(BURIED PURPLE M.M. UNDER 30" ALUM. ROD)  
14" FIR, S58°W, 16.1' (SCRIBED/PAINTED RED)  
24" FIR, N06°E, 26.2' (SCRIBED/PAINTED RED)

WEST 1/4 CORNER SECTION 26

FD. 1958 DOUGLAS COUNTY BRASS CAP.  
50" FIR STUMP, N71°E, 41.0' (SCAR VIS.), 1883 B.T.  
66" CEDAR STUMP, S89°W, 36.0' (SCRIBED VIS.), 1883 B.T.  
20" HEMLOCK, S39°W, 5.8' (SCAR VIS.), 1958 B.T.  
24" CEDAR, N17°E, 96.8' (SCRIBED VIS.), 1958 B.T.

NORTH 1/4 CORNER SECTION 26

FD. 1960 WILFORD HAINES "T" IRON  
26" MAPLE, N15°E, 22.0' (NO MARKS), 1883 B.T.  
54" FIR SNAG, S01°W, 38.0' (BARK SCRIBE), 1883 B.T.  
16" FIR STUMP, N11°W, 58.5' (NO MARKS), 1961 B.T.  
6" FIR, N84°W, 20.3' (SCAR VIS.), 1984 B.T.  
16" CEDAR, S57°E, 54.0' (SCAR VIS.), 1984 B.T.

NOTE, THE PURPOSE OF THIS SURVEY IS TO MAKE DRAFTING CHANGES, TO FILED SURVEY M115-63 DATED 10-06-92, AS REQUESTED BY CLIENT. CHANGES MADE AS OF 02-24-94 ARE NOTED BY A (C).

NARRATIVE, THE PURPOSE OF THIS SURVEY IS TO POST AND BLAZE THE NORTH AND WEST LINES OF THE SE1/4 OF SECTION 26. ALSO TO POST AND BLAZE THE SOUTH AND WEST LINES OF THE SW1/4 OF SECTION 26. THE FOLLOWING CORNERS WERE ALSO SET IN THIS SURVEY; 1) THE C.E. 1/16 CORNER, 2) THE CENTER 1/4 CORNER, 3) THE C.S. 1/16 CORNER, 4) THE WEST 1/16 CORNER SOUTH LINE AND 5) THE SOUTH 1/16 CORNER WEST LINE SECTION 26. THE NORTH 1/4 CORNER, THE EAST 1/4 CORNER, THE SOUTH 1/4 CORNER, THE S.W. SECTION CORNER AND THE WEST 1/4 CORNER WERE FOUND IN THE FIELD; AS SHOWN, AND USED AS CONTROL FOR THIS SURVEY. A SERIES OF CLOSED MEANDER, WILD T-16 THEODOLITE AND A WILD DI-4L E.D.M., CONTROL TRAVERSES WERE RUN BETWEEN THE ABOVE MENTIONED CONTROLLING CORNERS. THE CENTER 1/4 CORNER, MONUMENT "B", WAS SET AT THE POINT OF INTERSECTION OF THE N-S AND E-W CENTERLINES OF SECTION 26. THE C.E. 1/16 CORNER, MONUMENT "A", WAS SET HALFWAY BETWEEN THE EAST 1/4 CORNER AND THE CENTER 1/4 CORNER AS SHOWN. THE C.S. 1/16 CORNER, MONUMENT "C", WAS SET HALFWAY BETWEEN THE SOUTH 1/4 CORNER AND CENTER 1/4 CORNER AS SHOWN. THE WEST 1/16 CORNER BETWEEN SECTIONS 26 AND 35, MONUMENT "D", WAS SET HALFWAY BETWEEN THE SOUTH 1/4 CORNER AND THE S.W. SECTION CORNER AS SHOWN. THE SOUTH 1/16 CORNER BETWEEN SECTIONS 26 AND 27, MONUMENT "E", WAS SET HALFWAY BETWEEN THE S.W. SECTION CORNER AND THE WEST 1/4 CORNER. A CLOSED RANDOM, WILD T-16 THEODOLITE AND A WILD DI-4L E.D.M., PROPERTY LINE TRAVERSE WAS RUN ALONG ALL PROPERTY LINES TO BE BLAZED AND POSTED. OFFSETS WERE COMPUTED FROM THIS PROPERTY LINE TRAVERSE TO THE TRUE PROPERTY LINE. PROPERTY LINES WERE MARKED WITH RED PAINTED BLAZES, RED RIBBON, YELLOW INTERNATIONAL PAPER COMPANY BOUNDARY LINE DECALS ATTACHED TO 72" ALUMINUM POSTS AND BURIED FLUORESCENT ORANGE MAGNET MARKERS. ALUMINUM POSTS AND BURIED MAGNETIC MARKERS ARE REFERENCED BY A 4" x 6" ALUMINUM BOUNDARY LINE TAG NAILED TO A NEARBY TREE. TAG NOTES BEARING AND DISTANCE FROM TREE TO ALUMINUM POST OR BURIED MAGNETIC MARKER.

EAST 1/4 CORNER SECTION 26

FD. 1981 B.L.M. BRASS CAP  
5" FIR, N50°W, 15.7' (SCAR VIS.), 1981 B.T.  
24" FIR, N64°E, 18.3' (SCAR VIS.), 1981 B.T.

SURVEY FOR DOUGLAS COUNTY  
INTERNATIONAL PAPER COMPANY

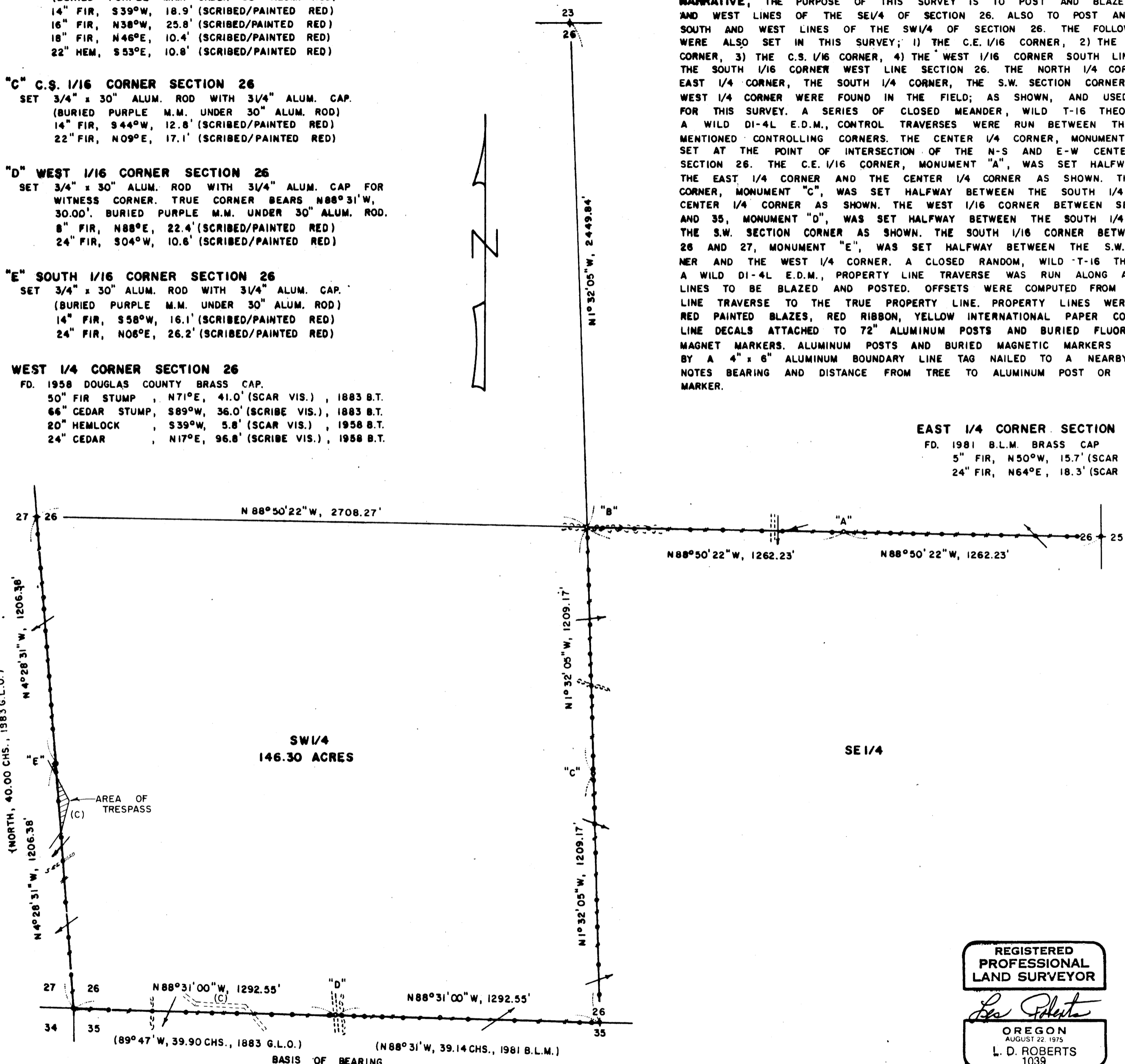
SECTION 26, T21S, R7W, W.M.  
DOUGLAS COUNTY, OREGON

BY  
ROBERTS SURVEYING INC.  
29 WEST 29TH STREET  
EUGENE, OREGON 97405

SEPTEMBER 10, 1992  
SCALE 1" = 400'

LEGEND,

- MONUMENTS FOUND AND USED FOR CONTROL
- MONUMENTS SET, 3/4" x 30" ALUMINUM RODS WITH 3/4" ALUMINUM CAPS. CAPS STAMPED S-T-R, DATE AND "P.L.S. 1039".
- ( ) DATA OF RECORD, 1883 G.L.O. SURVEY AND 1981 B.L.M. SURVEY.
- BASIS OF BEARING, WEST 1/2 SOUTH LINE SECTION 26 FROM 1981 B.L.M. SURVEY.
- LINES BLAZED AND POSTED THIS SURVEY.
- DISTANCES TO B.T.'S ARE CENTER MEASURE
- (M.M.) INDICATES LOCATION OF BURIED MAGNETIC MARKERS. MARKERS ARE FLUORESCENT ORANGE IN COLOR AND ARE BURIED, 12" TO 18" DEEP, ALONG LINE AS SHOWN.
- ALL NEW B.T.'S ARE SCRIBED AND HAVE A BRASS WASHER STAMPED "P.L.S. 1039" NAILED TO LOWER BLAZE. SCRIBED BLAZES ARE PAINTED RED.
- NEW B.T.'S HAVE A 6" STEEL SPIKE DRIVEN INTO THE CENTER OF THE TREE TO SERVE AS A CHAINING POINT FOR MEASURED DISTANCES.



LOCATION OF BURIED MAGNETIC MARKERS					
E1/4 COR.	0'	WEST (AL. POST)	S1/4 COR.	0'	WEST (AL. POST)
E-W 26-1	37'	WEST (M.M.)	S26-1	39'	WEST (M.M.)
E-W 26-2	105'	WEST (M.M. & AL. POST)	S26-2	99'	WEST (M.M. & AL. POST)
E-W 26-3	160'	WEST (M.M.)	S26-3	418'	WEST (M.M. & AL. POST)
E-W 26-4	317'	WEST (M.M. & AL. POST)	S26-4	644'	WEST (M.M. & AL. POST)
E-W 26-5	482'	WEST (M.M. & AL. POST)	S26-5	783'	WEST (M.M. & AL. POST)
E-W 26-6	622'	WEST (M.M.)	S26-6	963'	WEST (M.M. & AL. POST)
E-W 26-7	771'	WEST (M.M. & AL. POST)	S26-7	1072'	WEST (M.M.)
E-W 26-8	913'	WEST (M.M.)	S26-8	1154'	WEST (M.M. & AL. POST)
E-W 26-9	1027'	WEST (M.M. & AL. POST)	S26-9	1202'	WEST (M.M.)
E-W 26-10	1154'	WEST (M.M.)	WIT. COR.	1262'	WEST (M.M. & AL. POST)
C.E. 1/16	1262'	WEST (M.M. & AL. POST)	W. 1/16	1292'	WEST (CORNER NOT SET)
E-W 26-11	1313'	WEST (M.M.) (C)	S26-11	1325'	WEST (M.M.)
E-W 26-12	1558'	WEST (M.M. & AL. POST)	S26-12	1502'	WEST (M.M. & AL. POST)
E-W 26-13	1658'	WEST (M.M. & AL. POST)	S26-13	1605'	WEST (M.M.)
E-W 26-14	1851'	WEST (M.M. & AL. POST)	S26-14	1772'	WEST (M.M. & AL. POST)
E-W 26-15	2008'	WEST (M.M. & AL. POST)	S26-15	1897'	WEST (M.M.)
E-W 26-16	2213'	WEST (M.M.)	S26-16	2027'	WEST (M.M. & AL. POST)
E-W 26-17	2287'	WEST (M.M. & AL. POST)	S26-17	2198'	WEST (M.M. & AL. POST)
E-W 26-18	2439'	WEST (M.M.)	S26-18	2408'	WEST (M.M. & AL. POST)
C. 1/4 COR.	2524'	WEST (M.M. & AL. POST)	S.W. COR.	2585'	WEST (AL. POST)
N-S 26-1	54'	SOUTH (M.M.)	W26-1	160'	NORTH (M.M. & AL. POST)
N-S 26-2	208'	SOUTH (M.M. & AL. POST)	W26-2	340'	NORTH (M.M. & AL. POST)
N-S 26-3	288'	SOUTH (M.M.)	W26-3	512'	NORTH (M.M. & AL. POST)
N-S 26-4	488'	SOUTH (M.M. & AL. POST)	W26-4	716'	NORTH (M.M. & AL. POST)
N-S 26-5	618'	SOUTH (M.M. & AL. POST)	W26-5	846'	NORTH (M.M.)
N-S 26-6	730'	SOUTH (M.M.)	W26-6	1011'	NORTH (M.M. & AL. POST)
N-S 26-7	779'	SOUTH (M.M. & AL. POST)	W26-7	1156'	NORTH (M.M.)
N-S 26-8	827'	SOUTH (M.M.)	S. 1/16 COR.	1206'	NORTH (M.M. & AL. POST)
N-S 26-9	937'	SOUTH (M.M. & AL. POST)	W26-10	1364'	NORTH (M.M. & AL. POST)
N-S 26-10	1115'	SOUTH (M.M. & AL. POST)	W26-11	1486'	NORTH (M.M.)
N-S 26-11	1191'	SOUTH (M.M.)	W26-12	1624'	NORTH (M.M. & AL. POST)
C.S. 1/16	1209'	SOUTH (M.M. & AL. POST)	W26-13	1769'	NORTH (M.M. & AL. POST)
N-S 26-13	1234'	SOUTH (M.M.)	W26-14	1848'	NORTH (M.M.)
N-S 26-14	1379'	SOUTH (M.M. & AL. POST)	W26-15	1952'	NORTH (M.M. & AL. POST)
N-S 26-15	1448'	SOUTH (M.M.)	W26-16	2021'	NORTH (M.M.)
N-S 26-16	1598'	SOUTH (M.M. & AL. POST)	W26-17	2160'	NORTH (M.M. & AL. POST)
N-S 26-17	1825'	SOUTH (M.M. & AL. POST)	W26-18	2327'	NORTH (M.M.)
N-S 26-18	1958'	SOUTH (M.M. & AL. POST)	W. 1/4 COR.	2413'	NORTH (AL. POST)
N-S 26-19	2141'	SOUTH (M.M. & AL. POST)			
N-S 26-20	2282'	SOUTH (M.M. & AL. POST)			
S. 1/4 COR.	2418'	SOUTH (AL. POST)			

REGISTERED  
PROFESSIONAL  
LAND SURVEYOR  
*L. D. Roberts*  
OREGON  
AUGUST 22, 1975  
L. D. ROBERTS  
1039  
EXPIRES 12-31-94

COUNTY SURVEYORS FILE DATA  
DO NOT REMOVE FROM OFFICE

MAP FILE M118-49