

# LONE ROCK TIMBER CO.

PO BOX 1127 ROSEBURG OREGON 97470 DATE: FEBUARY 1994  
 SECTION 2, TOWNSHIP 27 SOUTH, RANGE 8 WEST, W.M. DOUGLAS COUNTY, OREGON  
 LONG RIDGE-PANTHER CREEK SURVEY SCALE 1" = 500'

REGISTERED  
 PROFESSIONAL  
 LAND SURVEYOR  
*Ken W. Hoffine*  
 OREGON  
 JULY 16, 1987  
 KEN W. HOFFINE  
 2291

EXPIRES 6-30-95

## NARRATIVE

THIS SURVEY WAS CONDUCTED TO ESTABLISH PROPERTY CORNERS AND PROPERTY LINES FOR  
 TIMBER CUTTING PURPOSES. THE SURVEY IS DEPENDENT UPON A SURVEY BY CRAIG TEAPLIN  
 FILED IN DOUGLAS COUNTY SURVEYORS OFFICE CS 55/285.

THIS SURVEY WAS INITIATED AT THE CENTER SOUTH 1/16 TRAVERSING ON A RANDOM LINE  
 ON A CLOSED LOOP TO THE CORNERS SET BY TEAPLIN AND DESCRIBED HEREON THIS MAP.  
 TEAPLIN SET THE WEST 1/4 AND THE NORTH 1/4 CORNERS BY PROPORTION AND RENEWED OR SET  
 FROM ORIGINAL EVIDENCE THE REST OF THE EXTERIOR SECTION AND QUARTER CORNERS.  
 TEAPLIN'S CORNERS WERE SET WITHIN REASONABLE STANDARDS AND HAVE BEEN USED FOR  
 TWENTY YEARS TO LOCATE PROPERTY LINES BETWEEN THE THREE LANDOWNERS, WEYCO CO., LONE  
 ROCK TIMBER AND THE BUREAU OF LAND MANAGEMENT.

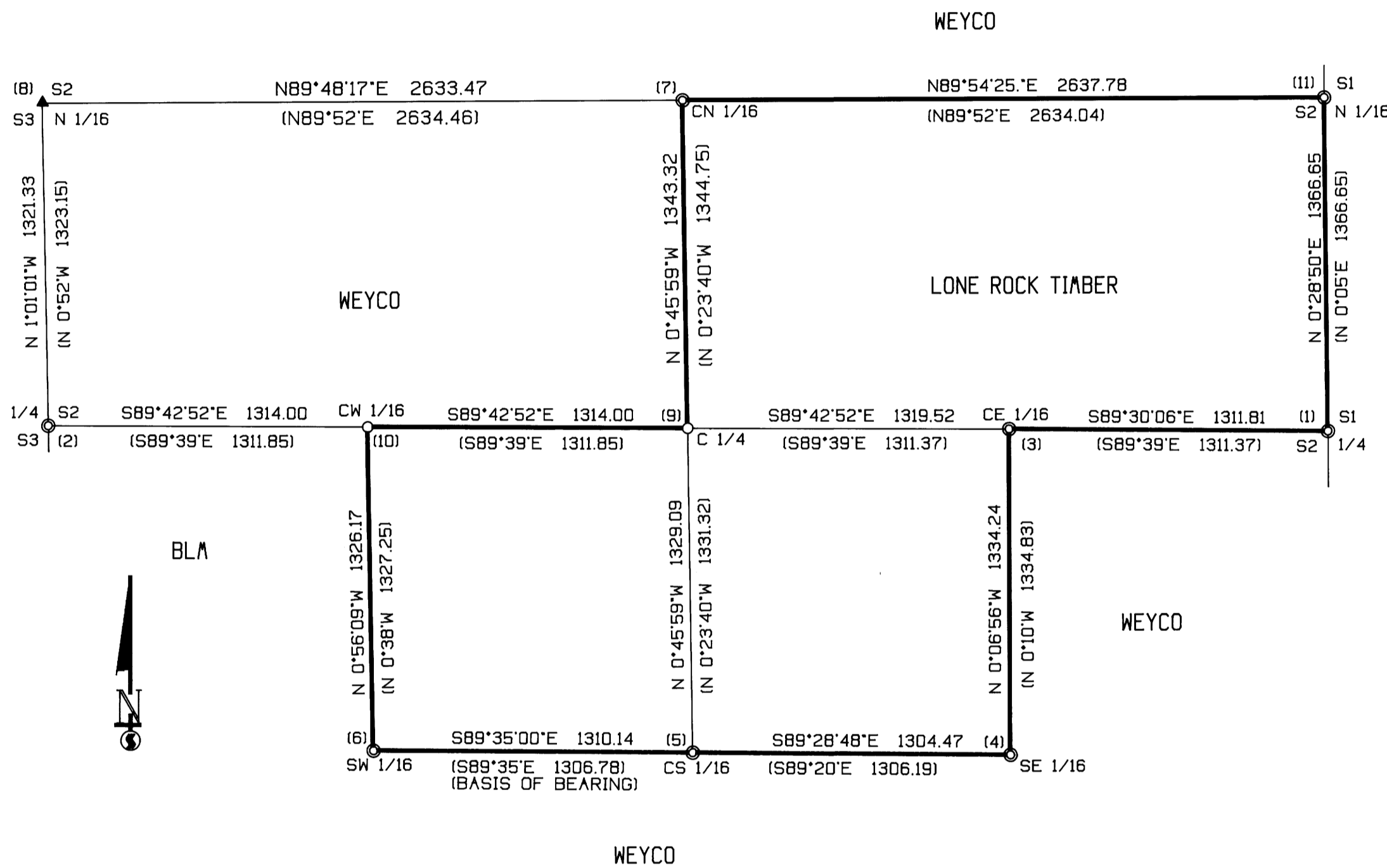
I SET THE CENTER QUARTER OF THIS SECTION FROM THE INTERSECTION OF LINE BETWEEN  
 CN 1/16 TO THE CS 1/16 AND THE LINE BETWEEN THE W 1/4 TO THE CE 1/16. I SET THE  
 CENTER QUARTER CORNER FROM THESE CORNERS TO MOST ACCURATELY LOCATE THE POSITION OF  
 THE C 1/4 BASED ON TEAPLIN'S CALCULATIONS FOR THE SUBDIVISION OF SECTION 2. I THEN  
 SET THE CW 1/16 AT PROPORTIONAL DISTANCE BETWEEN THE CENTER 1/4 I SET AND TEAPLIN'S  
 PROPORTIONED WEST 1/4.

THIS SURVEY WAS DONE WITH A LIETZ SET 2 TOTAL STATION WITH GARY ANGIOLET,  
 JERRY RAGON AND PAT KELLY ASSISTING ME.

## CORNER INFORMATION

THE FOLLOWING IS A RECORD OF ALL CORNERS FOUND OR SET DURING THE COURSE OF THIS  
 SURVEY.

- (1) EAST 1/4 CORNER FOR SECTION 2  
 FOUND 2 1/2" IRON PIPE WITH TOP ETCHED 1/4  
 -- 40' LOW STUMP BEARS S20°W, 7.0 FEET, BLM TAG BY B.W. HOLT  
 -- 44' LOW STUMP BEARS S60°W, 19.5 FEET TO MID STUMP (RECORD S59°W, 17.1  
 FEET TO FACE), WEYCO TAG  
 -- 16' STUMP BEARS N82°E, 19.5 FEET TO MID STUMP (RECORD N83°E, 18.6 FEET  
 TO FACE), WEYCO TAG AND NAIL AT BASE  
 -- 1 TAG A 5' DOUGLAS FIR BEARING S31°E, 20.8 FEET  
 CORNER LIES ON SOUTHWEST SLOPE APPROXIMATELY 150 FEET FROM THE END OF A DIRT ROAD.
- (2) WEST 1/4 CORNER FOR SECTION 2  
 FOUND 2 1/2" IRON PIPE WITH THREADED CAP 1.0 FEET ABOVE GROUND  
 -- 30' DOUGLAS FIR S56°W, 17.5 FEET WITH WEYCO TAG AND NAIL IN FACE  
 -- 30' DOUGLAS FIR S78°E, 34.3 FEET WITH WEYCO TAG AND NAIL IN FACE  
 CORNER SITS ON NORTH END OF PROMINENT RIDGE IN NICE STAND OF 24' TO 36' TIMBER.
- (3) CENTER EAST 1/16 SECTION 2  
 FOUND 1" IRON PIPE IN GOOD CONDITION  
 -- 10' CHINQUAPIN STUMP BEARS N35°E, 15.0 FEET (RECORD DIST. 14.0 FEET),  
 WEYCO TAG AND NAIL IN FACE  
 -- 44' DOUGLAS FIR STUMP BEARS S64°W, 29.0 FEET (RECORD DIST. 28.5 FEET)  
 -- 1 TAG A 9' DOUGLAS FIR BEARING N39°W, 8.8 FEET TO ALUMINUM NAIL AID BASE  
 CORNER LIES ON BRUSHY SOUTH SLOPE APPROXIMATELY 2 FEET SOUTHWEST OF OLD 50' STUMP
- (4) SOUTHEAST 1/16 CORNER SECTION 2  
 FOUND 1" IRON PIPE 0.5 FEET ABOVE GROUND  
 -- 17' HEALOCK BEARS S4°W, 24.8 FEET (RECORD DIST. 23.7 FEET), SCRIBING  
 VISIBLE AND WEYCO TAG  
 -- NO TRACE OF RECORD 6" HEALOCK BEARING N25 1/2°E, 19.1 FEET  
 -- 1 BLAZE AND TAG A 26' DOUGLAS FIR BEARING N15°E, 15.9 FEET  
 CORNER LIES IN MIDDLE OF PRE-COMMERCIAL THINNING, NEAR TOP OF RIDGE ON GENTLE  
 NORTHEAST SLOPE AT EDGE OF STEEPER GROUND.
- (5) CENTER SOUTH 1/16 CORNER SECTION 7  
 FOUND 1" IRON PIPE IN HEAVY SLASH PILE BENT OVER. WE UNCOVER AND STRAIGHTEN  
 -- 21' HEALOCK BEARS N61°W, 19.6 FEET, WEYCO TAG GROWN INTO HEALED SCAR  
 -- 26' HEALOCK BEARS N77°E, 14.8 FEET (RECORD DIST. 13.8 FEET), WE TAG TREE,  
 GOOD SCAR  
 CORNER LIES APPROXIMATELY 200 FEET NORTH OF OLD DIRT ROAD.
- (6) SOUTHWEST 1/16 CORNER SECTION 7  
 FOUND 1" IRON PIPE IN GOOD CONDITION  
 -- 20' DOUGLAS FIR BEARS S17°W, 29.4 FEET (RECORD DIST. 28.4 FEET), WELL  
 HEALED FACE AND WEYCO TAG  
 -- 14' DOUGLAS FIR BLOWDOWN ROOT HOLE BEARS N46 1/2°W, 8.5 FEET  
 -- 1 BLAZE AND TAG A 26' DOUGLAS FIR BEARING N51°E, 53.7 FEET  
 CORNER SITS ON GENTLE NORTHEAST SLOPING SPUR BETWEEN DRAWS.
- (7) CENTER NORTH 1/16 CORNER SECTION 7  
 FOUND 1" IRON PIPE IN GOOD CONDITION  
 -- 17' DOUGLAS FIR BEARS N76°E, 29.1 FEET WITH WELL HEALED SCAR AND WEYCO  
 TAG  
 -- 15' DOUGLAS FIR BEARS S80 1/2°W, 42.4 FEET (RECORD DIST. 52.4 FEET) WITH  
 WELL HEALED SCAR AND WEYCO TAG  
 CORNER LIES ON MODEST SOUTHEAST SLOPE APPROXIMATELY 115 FEET SOUTH OF OLD ROAD
- (8) NORTH 1/16 BETWEEN SECTIONS 2 & 3  
 COULD NOT FIND "W" NAIL IN ROCK AS CALLED FOR IN CS55/285  
 -- 15' DOUGLAS FIR BEARS N20°W, 18.7 FEET, WELL HEALED SCAR AND WEYCO TAG  
 -- 17' DOUGLAS FIR BEARS S55°E, 29.4 FEET, WELL HEALED SCAR AND WEYCO TAG  
 COULD NOT LOCATE ACTUAL CORNER NAIL IT LIES ON STEEP ROCK BLUFF, A SMALL  
 CASCADING CREEK BEARS NW APPROXIMATELY 1 CHAIN.
- (9) CENTER 1/4 SECTION 2  
 SET A 5/8" X 40" IRON ROD WITH ALUMINUM CAP, MARKED LONE ROCK TIMBER T27S RBW C  
 S2 1993 PLS 2291  
 -- 14' HEALOCK BEARS N17°30'W, 8.9 FEET, I SCRIBE C1/4 S2 BT AND ALSO PUT  
 P.K. NAIL IN FACE AND TAG TREE  
 -- 17 1/2" DOUGLAS FIR BEARS N82°40'E, 13.2 FEET, I SCRIBE C1/4 S2 BT AND  
 ALSO PUT P.K. NAIL IN FACE AND TAG TREE  
 -- 24' DOUGLAS FIR BEARS S54°E, 42.4 FEET, I SCRIBE C1/4 S2 BT AND ALSO  
 PUT P.K. NAIL IN FACE AND TAG TREE  
 -- 18' HEALOCK BEARS S3°40'W, 32.8 FEET, I SCRIBE C1/4 S2 BT AND ALSO PUT  
 P.K. NAIL IN FACE AND TAG TREE  
 CORNER SITS ON NORTHEAST SLOPE WITH LINES BLAZED AND PAINTED RUNNING NORTH AND WEST  
 FROM CORNER.
- (10) CENTER WEST 1/16 CORNER SECTION 2  
 SET A 5/8" X 40" IRON ROD WITH 2 1/2" ALUMINUM CAP, MARKED CW 1/16 22 1993 PLS 2291  
 -- 16' DOUGLAS FIR BEARS N70°43'E, 25.4 FEET, I SCRIBE CW1/16 S2 BT, AND  
 ALSO PUT P.K. NAIL IN FACE AND TAG TREE  
 -- 18' DOUGLAS FIR BEARS S3°09'W, 16.0 FEET, I SCRIBE CW1/16 S2 BT, AND  
 ALSO PUT P.K. NAIL IN FACE AND TAG TREE  
 CORNER SITS ON STEEP NORTHWEST SLOPE WITH MAIN DRAW APPROXIMATELY 2 CHAINS WEST.
- (11) NORTH 1/16 CORNER BETWEEN SECTION 2 AND SECTION 1.  
 FOUND 1" IRON PIPE BENT OVER BY WEYCO LOGGING. WE STRAIGHTEN BEST WE CAN.  
 -- 20' DOUGLAS FIR STUMP BEARS N70°40'E, 7.7 FEET (RECORD N75°E 7.6 FEET).  
 -- 7' DOUGLAS FIR STUMP HOLE BEARS S20°W, 5.0 FEET. TREE UPROOTED ALONG SIDE.  
 -- 21' DOUGLAS FIR STUMP BEARS S19°20'W, 64.1 FEET TO NAIL IN TOP OF STUMP.  
 WE TAG STUMP.  
 CORNER SITS ON STEEP NORTHWEST SLOPE WITH MAIN DRAW APPROXIMATELY 2 CHAINS WEST.



## LEGEND:

- ⊙ - FOUND MONUMENT
- - SET 5/8" BY 40" IRON ROD WITH ALUMINUM CAP
- - PROJECTED LINES
- - LINES FLAGGED, BLAZED & TAGGED
- ▲ - COMPUTED NOT SET
- [ ] - CRAIG TEAPLIN RECORD SURVEY FILED IN DOUGLAS COUNTY SURVEYORS OFFICE HAINES CS 55/285

COUNTY SURVEYORS FILE DATA  
 DO NOT REMOVE FROM OFFICE

FILED

Date: 3-29-94 By: JC  
 This survey consists of:  
 Map: M 118-40  
 Narrative:  
 Corner Rpt:

DOUGLAS COUNTY SURVEYOR

MAP FILE 118-40

MAP FILE 118-40