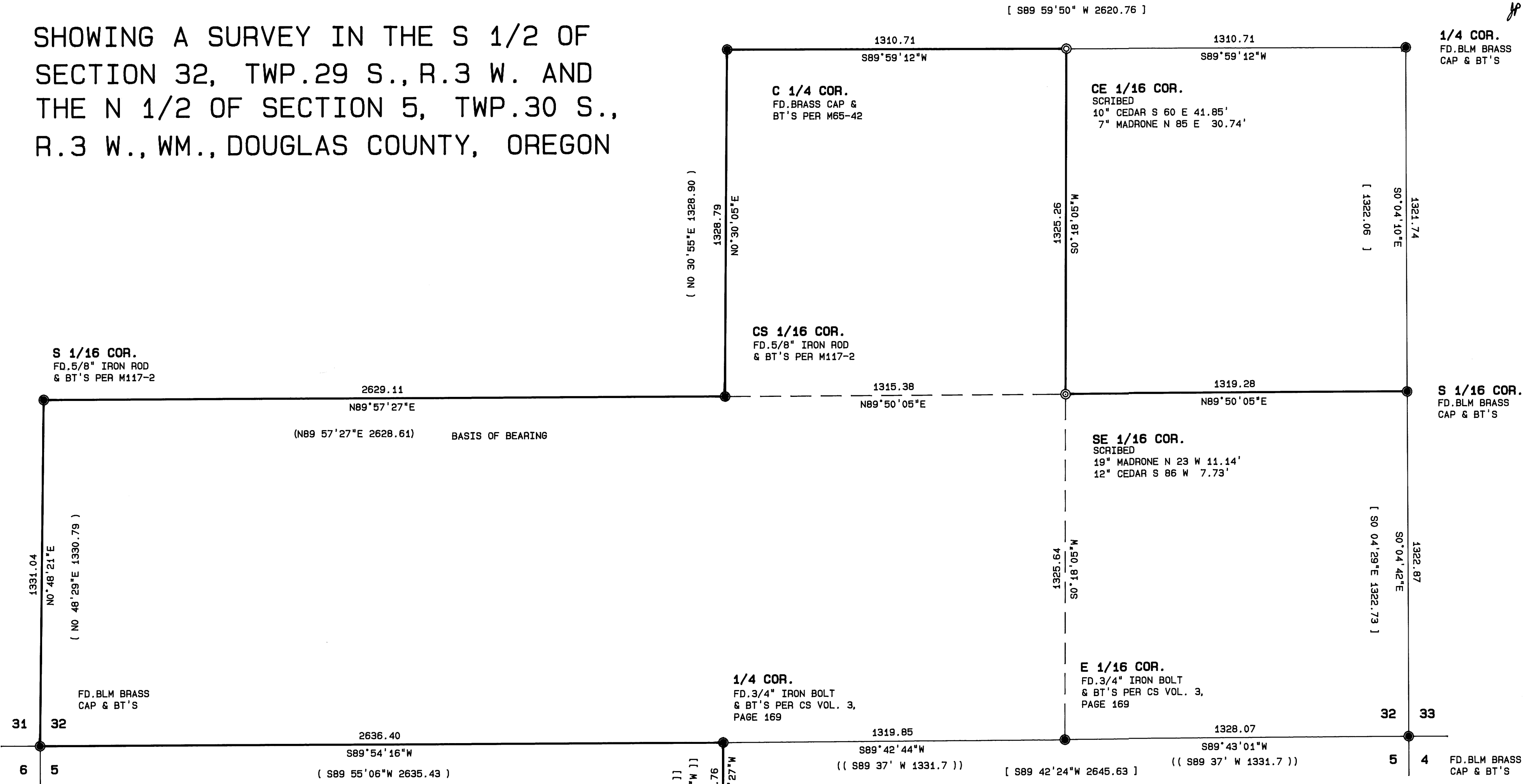


MAP

SHOWING A SURVEY IN THE S 1/2 OF SECTION 32, TWP.29 S., R.3 W. AND THE N 1/2 OF SECTION 5, TWP.30 S., R.3 W., WM., DOUGLAS COUNTY, OREGON



LEGEND

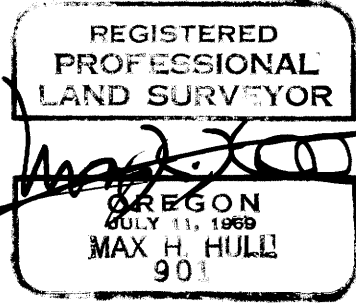
- ⊙ SET 5/8" X 30" IRON RODS WITH YELLOW PLASTIC CAPS MARKED "HULL RS901"
- FOUND IRON MONUMENTS AS NOTED
- BASIS OF BEARING IS THE NORTH LINE OF THE S 1/2, SW 1/4 PER M117-2
- OCTOBER 22, 1993
- SCALE: 1" = 300'
- SURVEY NARRATIVE IS A SEPARATE DOCUMENT
- () RECORD PER M 117-2
- [] RECORD PER M 65-42
- (()) RECORD PER CS VOL.3, PAGE 169
- [[]] RECORD PER M 65-70
- TRUE LINE SURVEYED AND MARKED WITH YELLOW AND ORANGE FLAGGING



SURVEYED FOR:
 MADROAK LOGGING
 224 NW "B" STREET
 GRANTS PASS, OREGON

SURVEYED BY:
 MAX H. HULL SURVEYING
 231 NW "B" STREET
 GRANTS PASS, OREGON

COUNTY SURVEYORS FILE DATA
 DO NOT REMOVE FROM OFFICE



EXPIRES 12-31-93

CS File 63,115
 Map File M118-4

CS File 63,115
 Map File M118-4



M 118 - 4

Office 476-2425

MAX H. HULL Land Surveying

231 N.W. 'B' Street Grants Pass, Oregon 97526

SURVEY NARRATIVE to comply with Paragraph 209.250, O.R.S.

DATE: October 22, 1993

FOR: Madroak Logging
224 N.W. "B" St.
Grants Pass, OR 97526

PURPOSE: To survey and mark property lines located in the South 1/2 of Section 32, Township 29 South, Range 3 West, and the North 1/2 of Section 5, Township 30 South, Range 3 West, Douglas County, Oregon.

PROCEDURE: Using a Nikon DTM-A10LG Total Station, I surveyed to the following corners:

FILED JP

NOV 16 1993

COUNTY SURVEYOR
DOUGLAS COUNTY, ORE.

South 1/4 corner of Section 32, at which point I found a 3/4" iron bolt from which I found
A Fir 30" in diam. South 45° East 13.7 feet, blaze healed.
A Fir 30" in diam. North 60-1/2° East 43.0 feet, blaze healed.
A Cedar 20" in diam. North 19° East 18.4 feet, blaze healed.

Southwest section corner, at which point I found a BLM brass cap from which I found
A Cedar 12" in diam. North 60° East 21.0 feet, blaze healed.
A Fir 20" in diam. North 42° West 55.0 feet, blaze healed.
A Fir 26" in diam. South 30° East 32.0 feet, blaze healed.
A Fir stump 42" in diam. South 66° West 24.5 feet.

South 1/16 corner Section 31 and 32, at which point I found a 5/8" iron rod from which I found
A Fir 16" in diam. South 71-1/2° West 45.6 feet, scribe visible.
A Fir 8" in diam. North 13-1/2° East 29.2 feet, scribe visible.

Center South 1/16 corner, at which point I found a 5/8" iron rod, from which I found
A Cedar 14" in diam. North 22° East 14.6 feet, scribe visible.
A Cedar 8" in diam. South 70° East 9.8 feet, scribe visible.

COUNTY SURVEYORS FILE DATA
DO NOT REMOVE FROM OFFICE

C.S. File No. 63/115-5

M 118 - 4

Center 1/4 corner, at which point I found a brass cap from which I found

A Fir 12" in diam. North 24° West 41.5 feet, blaze healed.

A Cedar 20" in diam. South 34-1/2° West 11.6 feet, blaze healed.

East 1/4 corner, at which point I found a BLM brass cap, from which I found

A Fir 20" in diam. North 25-1/4° East 37.0 feet, blaze healed.

A Fir 23" in diam. North 11-1/4° West 49.2 feet, blaze healed.

South 1/16 corner Section 32 and 33, at which point I found a BLM brass cap, from which I found

A Cedar 11" in diam. North 28-1/2° East 50.8 feet, blaze healed.

A Fir 24" in diam. South 43° West 75.2 feet, blaze healed.

Southeast section corner, at which point I found a BLM brass cap, from which I found

A B.Oak 25" in diam. South 58-1/2° West 169.0 feet, blaze healed.

An Ash 35" in diam. North 9-1/2° West 211.2 feet, blaze healed.

An Ash 22" in diam. South 14-1/2° East 48.8 feet, blaze healed.

An Ash 23" in diam. North 2° East 99.0 feet, blaze healed.

East 1/16 corner, at which point I found a 3/4" iron bolt, from which I found

A Cedar stump 24" in diam. North 33° West 60.9 feet.

A Fir stump 55" in diam. North 61-1/2° West 113.0 feet.

Thence I computed and set the Center East 1/16 corner and the Southeast 1/16 corner as shown on the map; thence I surveyed and marked true line as indicated.

Basis of bearing is the North line of the South 1/2 of the Southwest 1/4 per M117-2.

The survey was conducted with a Nikon DTM-A10LG Total Station.

The survey map is a separate document.

REGISTERED
PROFESSIONAL
LAND SURVEYOR

[Signature]
OREGON
JULY 11, 1969
MAX H. HULL
901

12-31-93

COUNTY SURVEYORS FILE DATA
DO NOT REMOVE FROM OFFICE

C.S. File No. 63/115-5

FILED *[initials]*

NOV 16 1993

COUNTY SURVEYOR
DOUGLAS COUNTY, ORE.