

DOUGLAS COUNTY SURVEYOR

MAP FILE M 118-39

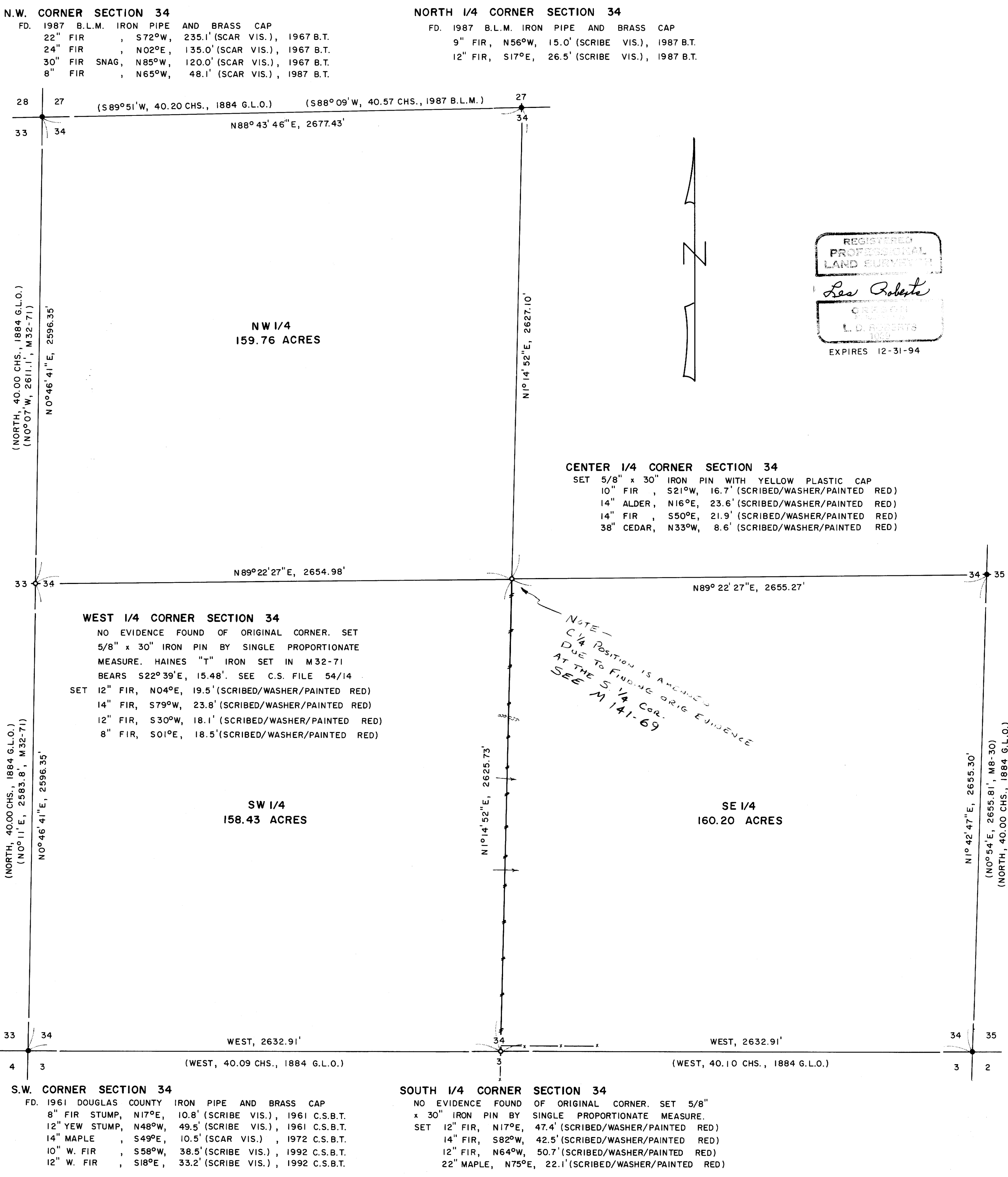
SURVEY FOR SENECA TIMBER COMPANY IN SECTION 34, T21S, R6W, W.M. DOUGLAS COUNTY, OREGON BY ROBERTS SURVEYING INC. 29 WEST 29TH STREET EUGENE, OREGON 97405 PHONE 345-1112

FEBRUARY 10, 1994 SCALE 1" = 400'

REGISTERED PROFESSIONAL LAND SURVEYOR Les Roberts OREGON L.D. ROBERTS EXP. 12-31-94

LEGEND,

- MONUMENTS FOUND AND USED FOR CONTROL
MONUMENTS SET, 5/8" x 30" IRON PINS WITH YELLOW PLASTIC CAPS. CAPS MARKED "ROBERTS P.L.S. 1039"
LINES MARKED THIS SURVEY. LINES MARKED WITH RED PAINTED BLAZES, RED RIBBON AND RED METAL FENCE POSTS.
DATA OF RECORD, 1884 G.L.O. SURVEY, 1987 B.L.M. SURVEY, SURVEY M8-30 BY HAINES IN 1957 AND SURVEY M32-71 BY HAINES IN 1967
BASIS OF BEARING, SOUTH LINE SECTION 34 FROM 1884 G.L.O. SURVEY
DISTANCES TO B.T.'S ARE CENTER MEASURE. ALL NEW B.T.'S ARE SCRIBED AND HAVE A METAL WASHER STAMPED "P.L.S. 1039" NAILED TO LOWER BLAZE. SCRIBED BLAZES ARE PAINTED RED.



EAST 1/4 CORNER SECTION 34
FD. HAINES "T" IRON SET IN SURVEY M8-30
12" FIR STUMP, N46°W, 240.4' (SCAR VIS.), 1957 B.T.
28" FIR, S19°E, 142.2' (SCAR VIS.), 1957 B.T.
SET 16" FIR, N80°W, 25.1' (SCRIBED/WASHER/PAINTED RED)

NARRATIVE, THE PURPOSE OF THIS SURVEY IS TO BLAZE AND POST THE SOUTH 1/2 OF THE NORTH-SOUTH CENTERLINE OF SECTION 34. ALSO TO SET THE CENTER 1/4 CORNER OF SAID SECTION 34. THE NORTH 1/4 CORNER, THE N.W. SECTION CORNER, THE S.W. SECTION CORNER, THE S.E. SECTION CORNER AND THE EAST 1/4 CORNER WERE FOUND IN THE FIELD, AS SHOWN, AND USED AS CONTROL FOR THIS SURVEY. A SERIES OF CLOSED RANDOM E.D.M. CONTROL TRAVERSES, USING A WILD T-16 THEODOLITE AND A DI-4L E.D.M., WERE RUN BETWEEN SAID CONTROLLING CORNERS. SECTION 34 WAS THEN SUBDIVIDED ACCORDING TO THE B.L.M. MANUAL OF INSTRUCTION FOR THE SURVEY OF THE PUBLIC LANDS OF THE UNITED STATES. A CLOSED RANDOM PROPERTY LINE TRAVERSE, USING A WILD T-16 THEODOLITE AND A DI-4L E.D.M., WAS RUN ALONG THE SOUTH 1/2 OF THE NORTH-SOUTH CENTERLINE OF SAID SECTION 34. OFFSETS WERE COMPUTED FROM THIS PROPERTY LINE TRAVERSE TO THE TRUE PROPERTY LINE. PROPERTY LINE WERE MARKED WITH RED PAINTED BLAZES, RED RIBBON AND RED METAL FENCE POSTS. THE WEST 1/4 CORNER WAS SET BY SINGLE PROPORTIONATE MEASURE BETWEEN THE FOUND N.W. AND S.W. SECTION CORNERS. BECAUSE OF THE COMMENTS MADE BY VERNON TRACY IN C.S. FILE NO. 54/14, I DECIDE NOT TO USE THE "T" IRON, SET BY WILFORD HAINES IN 1967, FOR THE WEST 1/4 CORNER OF SAID SECTION 34. THE SOUTH 1/4 CORNER OF SECTION 34 WAS SET BY SINGLE PROPORTIONATE MEASURE BETWEEN THE FOUND S.W. AND S.E. SECTION CORNERS. THE CENTER 1/4 CORNER OF SECTION 34 WAS SET AT THE POINT OF INTERSECTION OF THE NORTH-SOUTH AND EAST-WEST CENTERLINES OF SAID SECTION.

S.E. CORNER SECTION 34
FD. HAINES "T" IRON SET IN SURVEY M8-30
22" FIR STUMP, S72°W, 22.5' (SCRIBED VIS.), 1884 B.T.
40" FIR STUMP, S02°E, 37.0' (BARK SCRIBE), 1884 B.T.
16" FIR STUMP, N83°E, 48.5' (SCAR VIS.), 1957 B.T.
20" FIR STUMP, N30°W, 36.8' (SCAR VIS.), 1957 B.T.
38" FIR STUMP, S83°W, 21.5' (BARK SCRIBE), 1957 B.T.
40" FIR STUMP, S02°E, 37.0' (BARK SCRIBE), 1957 B.T.
SET 8" OAK, S39°W, 47.3' (SCRIBED/WASHER/PAINTED RED)
12" OAK, S11°E, 66.4' (SCRIBED/WASHER/PAINTED RED)

COUNTY SURVEYORS FILE DATA DO NOT REMOVE FROM OFFICE

MAP FILE M 118-39