

FILED *JP*

DEC 30 1993 *JP*

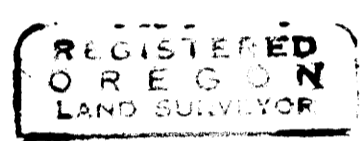
COUNTY SURVEYOR  
DOUGLAS COUNTY, ORE.  
*JP*

**SURVEY TO SET PROPERTY CORNERS  
IN THE S.W. 1/4 OF SEC. 19, T.26S., R.3W. W.M.**

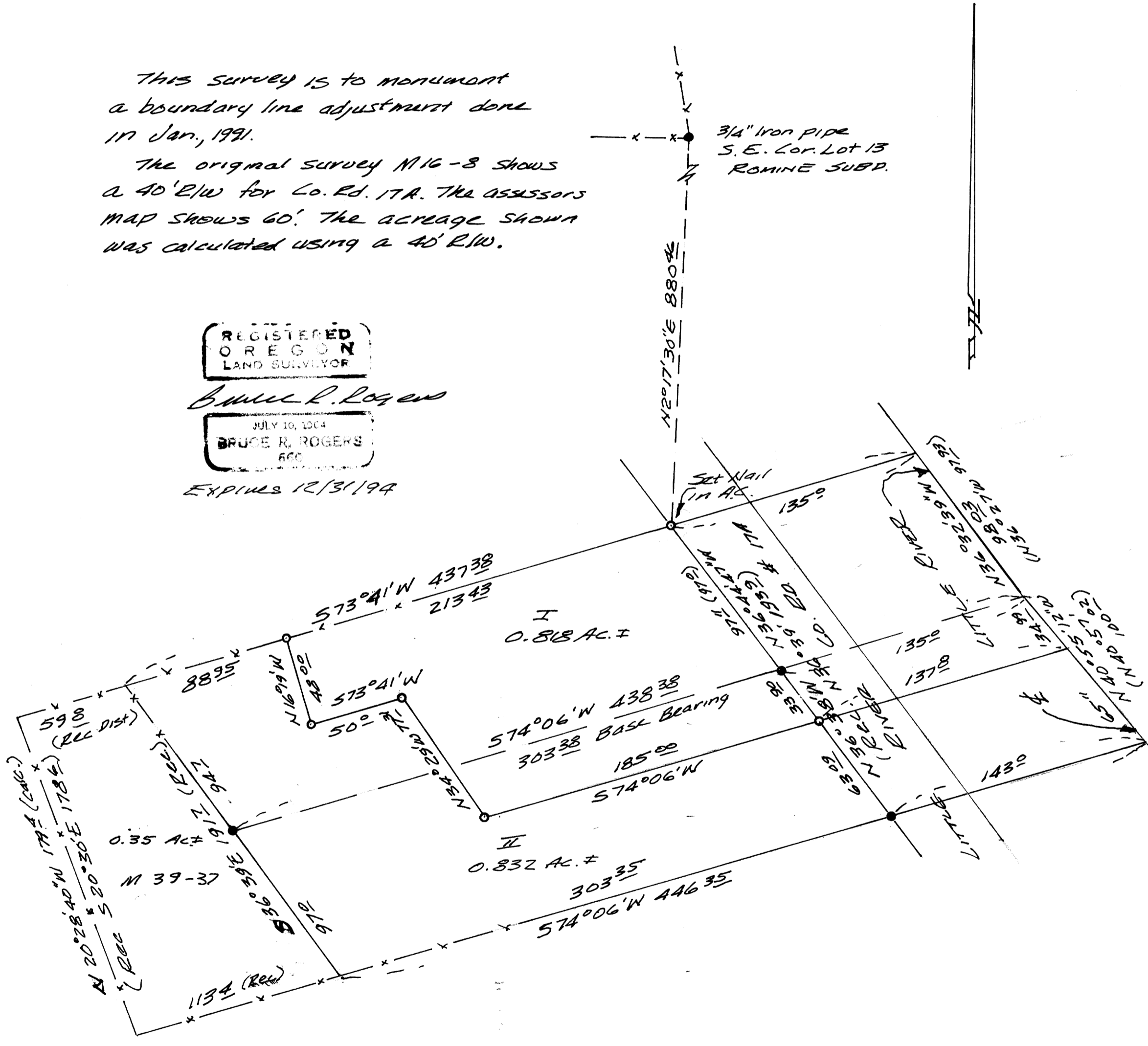
FOR **BERNARD J. WEEKS**  
BY **BRUCE ROGERS**  
443 W. Umpqua, Roseburg, O.R.  
DEC. 1993 1" = 50'

This survey is to monument  
a boundary line adjustment done  
in Jan., 1991.

The original survey M16-8 shows  
a 40' E/W for Co. Rd. 17A. The assessors  
map shows 60'. The acreage shown  
was calculated using a 40' E/W.



*Bruce R. Rogers*  
JULY 10, 1904  
BRUCE R. ROGERS  
600  
EXPIRES 12/31/94



- FOUND 1 1/4" Iron Pipe M16-8  
(or as noted)
- Set 5/8 x 30" Iron Rod  
with cap marked L.S. 660  
(or as noted)

COUNTY SURVEYORS FILE DATA  
DO NOT REMOVE FROM OFFICE