

FILED 88

OCT 15 1993

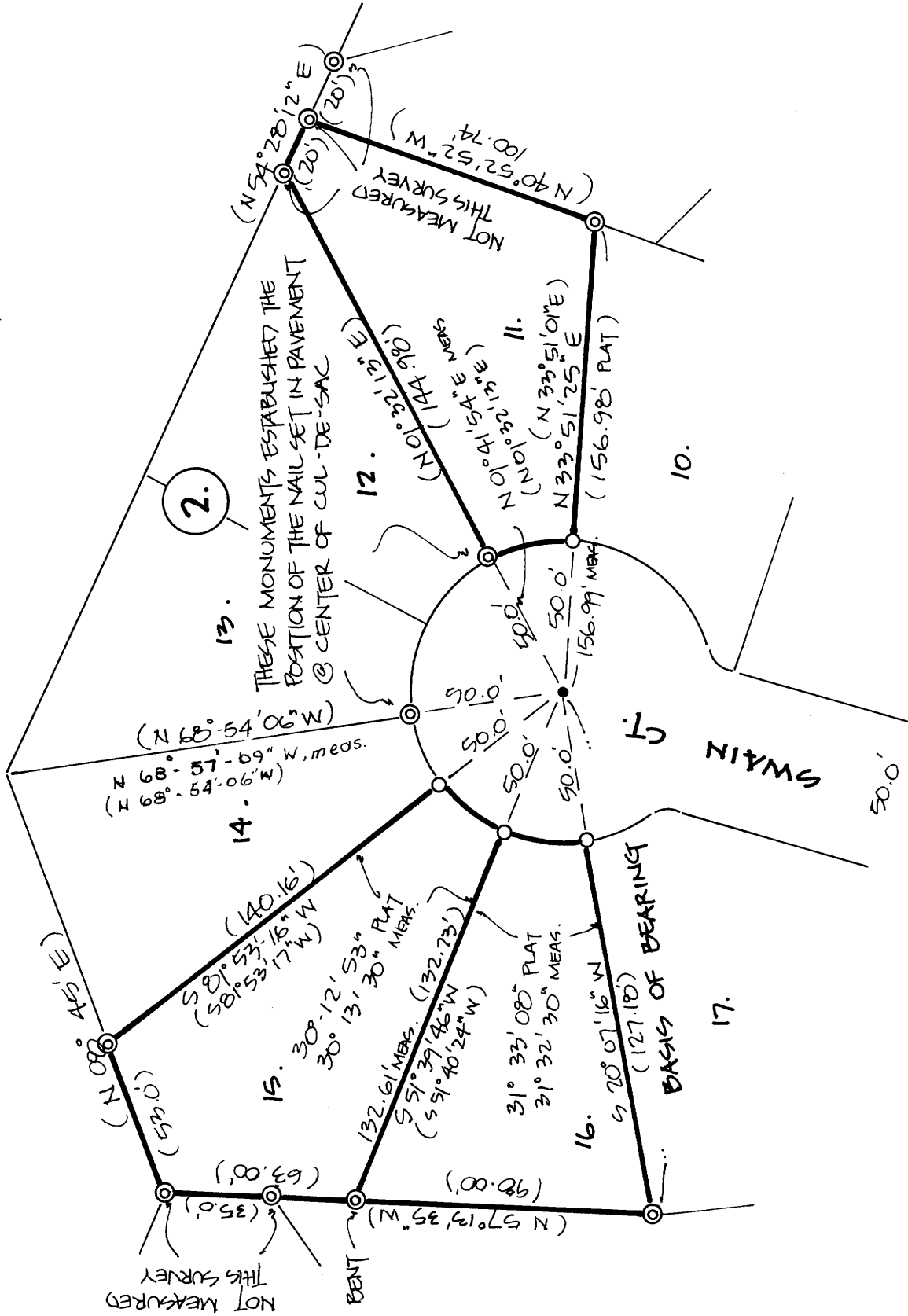
COUNTY SURVEYOR
MULTI-COUNTY, OR.

COUNTY SURVEYOR

PROPERTY SURVEY

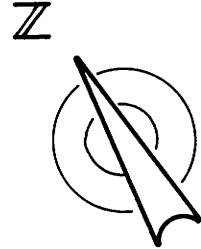
FOR
DIANE KAUFMANN
2795 FRONTAGE ROAD
REEDSPORT, OR. 97467

IN BLOCK 2, WESTWOOD ADDITION, PHASE II
IN THE S.E. 1/4, S.W. 1/4, SEC. 33, T21S, R12 WNW, DOUGLAS CO., OREGON



NARRATIVE - THE PURPOSE OF THIS SURVEY WAS TO MONUMENT THE MISSING CORNERS ON LOTS 11, 15, AND 16 IN BLOCK 2. THE ONLY PLAT MONUMENTS REMAINING ON THE CUL-DE-SAC (SEE MAP) WERE USED TO ESTABLISH THE CENTER OF THE R/W CIRCLE. SUBSEQUENTLY THE DISTANCE ALONG THE LINE COMMON TO LOTS 10 & 11 AND THE DISTANCE ALONG THE LINE COMMON TO LOTS 15 & 16 WAS MEASURED FROM THE CENTER OF THE CUL-DE-SAC. THE MEASURED DISTANCES WERE VERY NEAR PLAT DISTANCES, VERIFYING THE POSITION OF THE CENTER OF THE CUL-DE-SAC. THE MONUMENTS SET WERE THEN PLACED ON THEIR RESPECTIVE LINES BETWEEN THE CENTER OF THE CUL-DE-SAC AND THE BACK LOT CORNERS AT A DISTANCE OF 50 FEET FROM THE CENTER OF THE CUL-DE-SAC.

REFERENCE - PLAT OF WESTWOOD ADDITION - PHASE II
CITY OF REEDSPORT



SCALE = 1" = 50'
COUNTY SURVEYORS FILE DATA
DO NOT REMOVE FROM OFFICE

- LEGEND**
- ⊙ FOUND 5/8" IRON ROD - PLAT MONUMENT
 - SET 5/8" x 30" IRON ROD W/ PLASTIC CAP " L.S. 1331"
 - SET CONCRETE NAIL IN PAVEMENT

OCTOBER 15, 1993

REGISTERED PROFESSIONAL LAND SURVEYOR
J. Gregory Solarz
1331

OREGON SURVEYOR 1977
J. GREGORY SOLARZ
1331

KE KOOS ENGINEERING
2524 BROADWAY
NORTH BEND, OREGON

PROFESSIONAL LAND SURVEYOR #1331
EXPIRES 12-31-94