

BOUNDARY LINE ADJUSTMENT
 IN LOTS 1 & 2, AIRPORT INDUSTRIAL PARK SUBDIVISION
 SW 1/4 & NW 1/4, SECTION 12, T27S, R6W, W.M.
 FOR THE CITY OF ROSEBURG
 25 OCT 1993

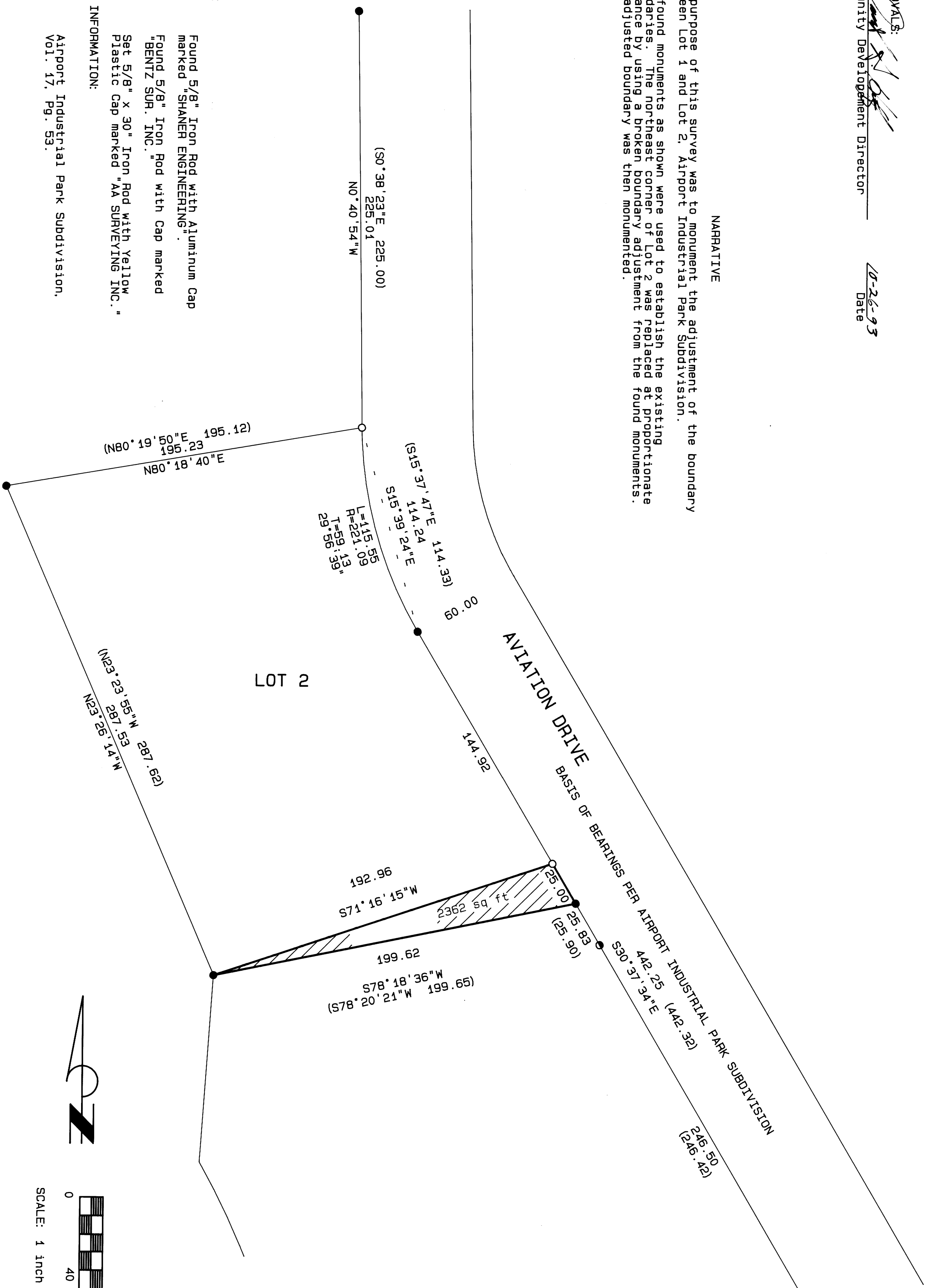
APPROVALS:

 Community Development Director
 10-26-93
 Date

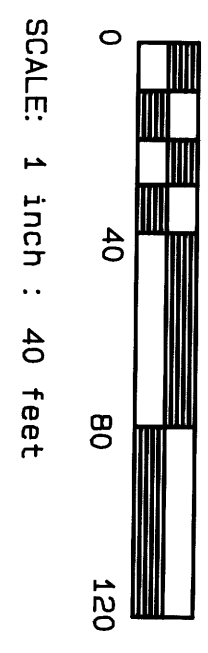
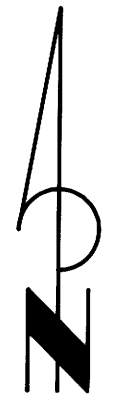
NARRATIVE

The purpose of this survey was to monument the adjustment of the boundary between Lot 1 and Lot 2, Airport Industrial Park Subdivision.

The found monuments as shown were used to establish the existing boundaries. The northeast corner of Lot 2 was replaced at proportionate distance by using a broken boundary adjustment from the found monuments. The adjusted boundary was then monumented.



- LEGEND:
- Found 5/8" Iron Rod with Aluminum Cap marked "SHANER ENGINEERING".
 - Found 5/8" Iron Rod with Cap marked "BENTZ SUR. INC."
 - Set 5/8" x 30" Iron Rod with Yellow Plastic Cap marked "AA SURVEYING INC."
- RECORD INFORMATION:
 () Airport Industrial Park Subdivision, Vol. 17, Pg. 53.



REGISTERED
 PROFESSIONAL
 LAND SURVEYOR
 Mark A. Heimbürger
 OREGON
 JULY 16 1987
 MARK A. HEIMBURGER
 2287
 Exp. 12/31/95

COUNTY SURVEYORS THE DATA
 DO NOT REMOVE FROM OFFICE