

# LONE ROCK TIMBER CO.

PO BOX 1127 ROSEBURG, OREGON 97470 JUNIPER PROPERTIES LIMITED PARTNERSHIP  
 SECTION 17, TOWNSHIP 23 SOUTH, RANGE 5 WEST, W.A. DOUGLAS COUNTY, OREGON  
 PETERSON RANCH SURVEY SCALE 1" = 500' DATE: SEPT 1993

REGISTERED  
 PROFESSIONAL  
 LAND SURVEYOR  
*Ken W. Hoffline*  
 OREGON  
 JULY 16, 1987  
 KEN W. HOFFLINE  
 2291

EXPIRES 12-31-93

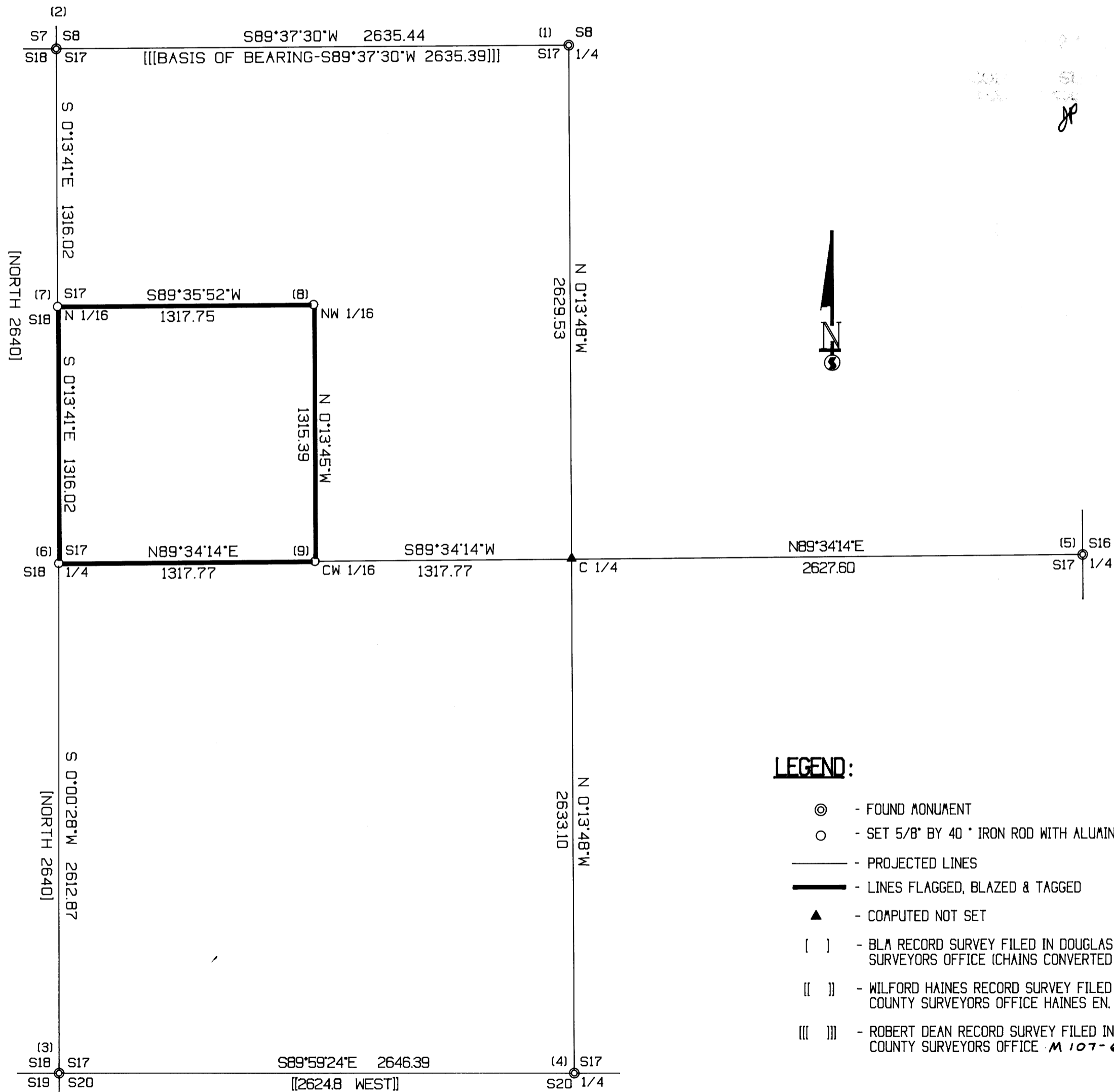
## NARRATIVE

THIS SURVEY WAS CONDUCTED TO ESTABLISH PROPERTY LINES FOR TIMBER CUTTING PURPOSES. WE INITIATED THE SURVEY AT A POINT NEAR THE WEST 1/4 CORNER OF SECTION 17 TYING IN A 14" STUMP, SCRIBING VISIBLE FROM THIEL IN 1904 REFERENCING FROM ORIGINAL EVIDENCE. THE LOCATION OF THE 1/4 CORNER IS N77°30'W 20.46 FEET. WE THEN TRAVERSED NORTH TO THE NW SECTION CORNER AND NORTH 1/4 WHICH ARE 5/8" IRON RODS SET BY ROBERT DEAN 1989 FROM ORIGINAL EVIDENCE. WE CONTINUED OUR RANDOM TRAVERSE TO THE EAST 1/4, A 1 1/2" AXLE IRON, AND THE SOUTH 1/4, A DOUGLAS COUNTY BRASS CAP, BOTH REFERENCED BY JAMES BYRON, 1959 WITH ORIGINAL EVIDENCE. WE THEN TRAVERSED TO THE SW SECTION CORNER, A HAINES T-BAR SET FROM ORIGINAL EVIDENCE. THEN CLOSED OUR TRAVERSE BACK TO THE NW 1/4. FROM COMPUTED BREAKDOWN OF SECTION 17 WE TRAVERSED AROUND THE SW 1/4 NW 1/4 MARKING AND BLAZING LINES, SETTING THE CENTER WEST 1/16, THE NW 1/16 AND THE N 1/16 BETWEEN SECTIONS 17 AND 18. THE SURVEY WAS DONE WITH A LEITZ SET 2 TOTAL STATION WITH GARY ANGIOLET AND JERRY RAGON ASSISTING ME.

## CORNER INFORMATION

THE FOLLOWING IS A RECORD OF ALL CORNERS FOUND OR SET DURING THE COURSE OF THIS SURVEY:

- (1) NORTH 1/4 CORNER SECTION 17  
 FOUND 3/4" IRON ROD WITH PLASTIC CAP MARKED LS/808  
 --9" DOUG FIR BEARS S46 1/2°W 27.3 FEET WITH HEALED FACE AND DOUGLAS COUNTY B.T. TAG.  
 --11" CHINKIPIN BEARS N34°W 21.6 FEET (RECORD 21.4) SCRIBING VISIBLE AND DOUGLAS COUNTY B.T. TAG.  
 --11" DOUG FIR BEARS S33°E 17.8 FEET HEALED FACE AND DOUGLAS COUNTY B.T. TAG.  
 CORNER SITS ON NORTH FACING SLOPE AT JUNCTION OF A NORTH SOUTH RUNNING FENCE AND AN EAST RUNNING FENCE.
- (2) NORTHWEST SECTION CORNER SECTION 17  
 FOUND 3/4" IRON ROD IN GOOD CONDITION (RECORD SHOWS PLASTIC CAP)  
 --8" DOUG FIR BEARS N80 1/2°E 7.3 FEET (RECORD 6.7) WELL HEALED SCAR AND B.T. TAG.  
 --9" DOUG FIR BEARS S21°E 7.5 FEET (RECORD 7.4) SCRIBING VISIBLE AND B.T. TAG.  
 --7" DOUG FIR BEARS S23 1/2°W 23.4 FEET (RECORD 23.5 FEET) SCRIBING VISIBLE AND B.T. TAG.  
 --7" MADRONE BEARS N30°W 20.2 FEET (RECORD 20.4 FEET) SCRIBING VISIBLE AND B.T. TAG.  
 CORNER SITS ON EAST FACING SLOPE APPROX 1/2 CHAINS WEST OF SMALL DRAW, GROUND AT CORNER LOCATION MAY BE IN A SLOW MASS MOVEMENT AREA.
- (3) SOUTHWEST SECTION CORNER SECTION 17  
 FOUND HAINES T-IRON WITH BRASS WASHER ON TOP IN GOOD CONDITION  
 --23" WHITE FIR BEARS N39 1/2°E 13.9 FEET WELL HEALED FACE AND B.T. TAG.  
 --50" DOUG FIR SNAG BEARS N14°W 7.3 FEET SCRIBING VISIBLE AND B.T. TAG.  
 --56" DOUG FIR BEARS S84°W 34.4 FEET (RECORD 34.4) WELL HEALED FACE AND B.T. TAG.  
 --17" DOUG FIR BEARS S34°W 26.5 FEET, I BLAZE AND TAG TREE.  
 CORNER LIES ON A NORTH FACING SLOPE APPROX 150 FEET SOUTH OF SMALL RIDGE.
- (4) SOUTH 1/4 CORNER SECTION 17  
 FOUND DOUGLAS COUNTY BRASS CAP IN GOOD CONDITION  
 --20" DOUG FIR BEARS S51 1/2°W 45.0 FEET WELL HEALED SCAR AND B.T. TAGS.  
 --30" DOUG FIR BEARS N2°W 98.4 FEET WELL HEALED SCAR AND B.T. TAG.  
 CORNER LIES ON STEEP WEST FACING SLOPE APPROX 150 FEET EAST OF OLD SKID ROAD WITH FENCE ON EAST SIDE.
- (5) EAST 1/4 CORNER SECTION 17  
 FOUND 1 1/2" AXLE IRON IN GOOD CONDITION  
 --OLD STUMP REMAINS OF ORIGINAL BEARING TREE WITH B.T. SCRIBING BEARS S85°W 7.9 FEET  
 --22" DOUG FIR BEARS N63°E 112.6 FEET (RECORD N65°E 113.5 FEET) WELL HEALED FACE BLM B.T. TAG ON BACK OF TREE I TAG FRONT.  
 --18" DOUG FIR BEARS N55°W 95.9 FEET (RECORD N54°W 96.0 FEET) HEALED FACE BLM B.T. TAG ON BACK I TAG FRONT.  
 THE CORNER LIES 1.0 FEET EAST OF OLD BROKEN DOWN NORTH-SOUTH FENCE LINE ON 15% EAST FACING SLOPE.
- (6) WEST 1/4 CORNER SECTION 17  
 SET 2 1/2" ALUMINUM CAP MARKED LONE ROCK TIMBER T23S R5W S18/S17 1/4 1993 PLS 2291 ON A 5/8" X 40" IRON ROD  
 --THIELS 14" STUMP REMAINS WITH SOME SCRIBING VISIBLE BEARS S77 1/2°E 20.46 FEET, (RECORD S77 1/2°E 31 LKS, PAGE 8, 1904 NOTEBOOK)  
 --5/8" IRON ROD BEARS S86°E 7.93 FEET  
 --BADLY DETERIORATED ROOTS OF INDETERMINABLE SIZE DF BEARS S59°E 69.0 FEET (RECORD S57 1/2°E 69.3 FEET)  
 --DETERIORATED BURNED ROOTS OF INDETERMINABLE SIZE DF, POSSIBLE CLUMP OF TWO, BEARS N29 1/2°W 57 FEET (RECORD N31°W 55.44 FEET)  
 --23" WHITE FIR BEARS N85°E 36.7 FEET I SCRIBE 1/4 S17 B.T., I PUT PK NAIL IN FACE AND ALUMINUM NAIL MID BASE FOR DISTANCE, I ALSO TAG.  
 --15 1/2" DOUG FIR BEARS S39°30'W 9.5 FEET I SCRIBE 1/4 S18 B.T., I PUT PK NAIL IN FACE AND ALUMINUM NAIL MID BASE FOR DISTANCE, I ALSO TAG.  
 --21 1/2" DOUG FIR BEARS N5°E 23.4 FEET I SCRIBE 1/4 S17 B.T., I PUT PK NAIL IN FACE AND ALUMINUM NAIL MID BASE FOR DISTANCE, I ALSO TAG.  
 --A METAL FENCE POST BEARS 0.5 FEET NORTH.  
 CORNER IS 0.5 FEET ABOVE GROUND ON FLAT RIDGE AT WEST EDGE OF OLD ROAD GRADE. 9 FEET SOUTH TO GATE POST FENCE. FENCE LINE BEARS WEST AND SOUTH.
- (7) NORTH 1/16 CORNER BETWEEN SECTION 17 AND SECTION 18  
 SET 2 1/2" ALUMINUM CAP MARKED LONE ROCK TIMBER T23S R5W N1/16 S18/S17 1993 PLS 2291 ON A 5/8" X 40" IRON ROD  
 --25" DOUG FIR BEARS S64°E 61.68 FEET, I SCRIBE N1/16 S17 B.T., I ALSO TAG AND PAINT TREE.  
 --17" DOUG FIR BEARS N18°W 70.27 FEET, I SCRIBE N1/16 S18 B.T. I ALSO TAG AND PAINT TREE.  
 --METAL FENCE POST BEARS NORTH 1.0 FEET.  
 CORNER IS 0.5 FEET ABOVE GROUND WITH OLD FENCE POST BEARS N58°E 8.8 FEET WITH BROKEN DOWN FENCE LINES RUNNING EAST AND SOUTH. CORNER ALSO LIES IN A FLAT GRASSY OPEN AREA 25 FEET SOUTHWEST OF SPRING FEED WATER TANK.
- (8) NORTHWEST 1/16 CORNER SECTION 17  
 SET 2 1/2" ALUMINUM CAP MARKED LONE ROCK TIMBER NW 1/16 S17 1993 PLS 2291 ON A 5/8" BY 40" IRON ROD  
 --16" DOUG FIR BEARS N59°30'E 43.0 FEET, WE SCRIBE NW 1/16 S17 B.T. AND PAINT AND TAG TREE.  
 --23" DOUG FIR BEARS S26°W 21.4 WE SCRIBE NW 1/16 S17 B.T. AND PAINT AND TAG TREE.  
 --METAL FENCE POST BEARS NORTH 0.5 FEET.  
 CORNER LIES ON A ROLLING 35% EAST FACING SIDE SLOPE APPROX 1/2 CHAIN SOUTH OF SPUR RIDGE BEARING NORTHEAST
- (9) CENTERWEST 1/16 CORNER SECTION 17  
 SET 2 1/2" ALUMINUM CAP MARKED LONE ROCK TIMBER CW 1/16 S17 1993 PLS 2291 ON A 5/8" X 40" IRON ROD 0.7 FEET ABOVE GROUND  
 --14" DOUG FIR BEARS N54°45'W 21.02 FEET, WE SCRIBE CW 1/16 S17 B.T. AND PAINT AND TAG TREE.  
 --14" DOUG FIR BEARS S44°15'W 57.96 FEET, WE SCRIBE CW 1/16 S17 B.T. AND PAINT AND TAG TREE.  
 --METAL FENCE POST BEARS NORTH 0.5 FEET.  
 --OLD FENCE POST FROM FENCE REMAINS THAT RUNS GENERALLY WEST BEARS S86°W 28.5 FEET.  
 CORNER LIES ON EAST EDGE OF AN OLD SKID ROAD, WITH CLEAR CUT TO THE SOUTHEAST. GROUND IS GENERALLY FLAT AND ROLLING.



MAP FILE M 117-72

M 117-72