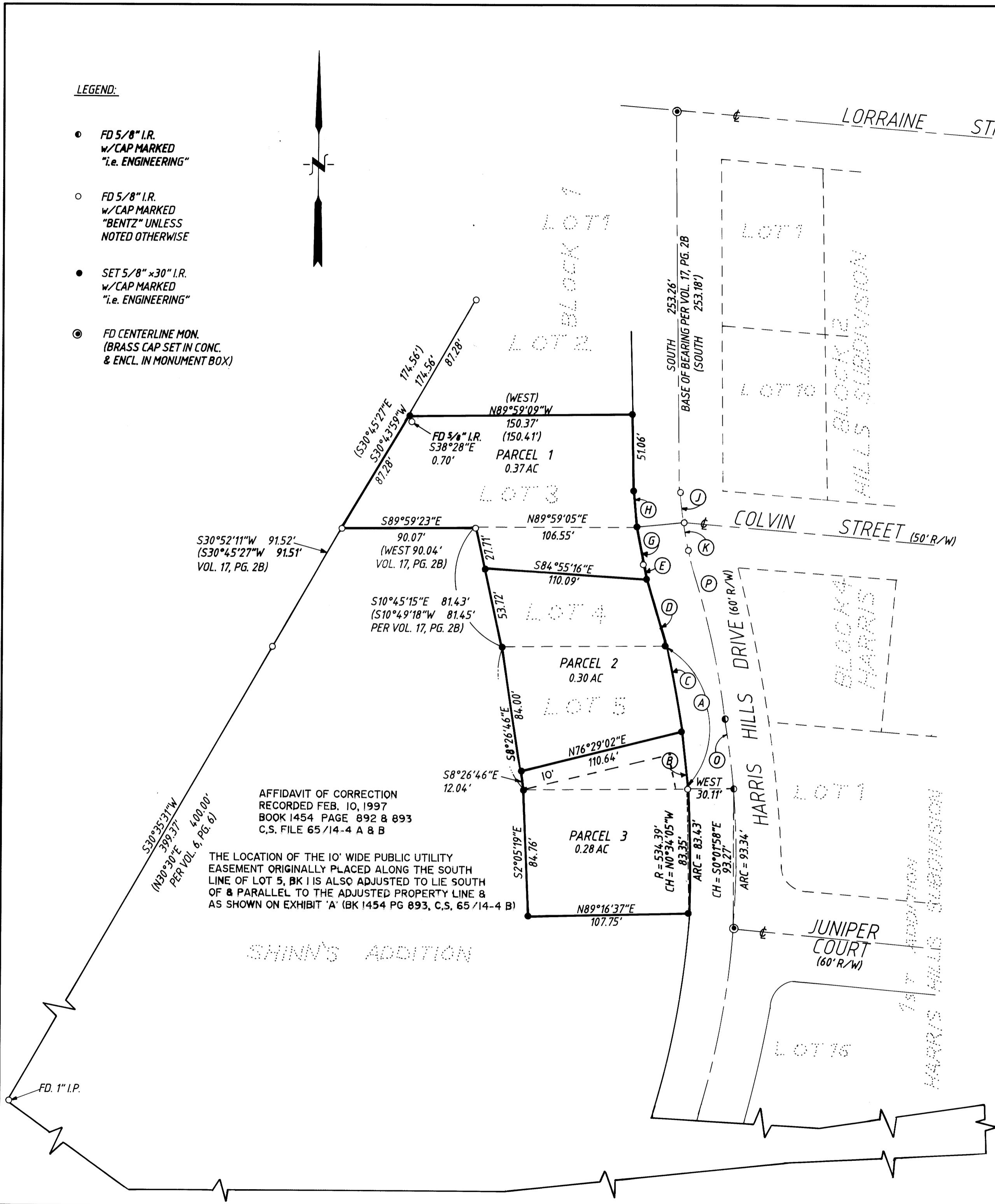
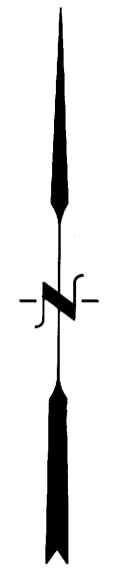


LEGEND:

- FD 5/8" I.R. w/CAP MARKED "i.e. ENGINEERING"
- FD 5/8" I.R. w/CAP MARKED "BENTZ" UNLESS NOTED OTHERWISE
- SET 5/8" x 30" I.R. w/CAP MARKED "i.e. ENGINEERING"
- FD CENTERLINE MON. (BRASS CAP SET IN CONC. & ENCL. IN MONUMENT BOX)



S30°52'11"W 91.52'
(S30°45'27"W 91.51'
VOL. 17, PG. 2B)

S10°45'15"E 81.43'
(S10°49'18"W 81.45'
PER VOL. 17, PG. 2B)

S30°23'37"W 399.37'
(N30°30'E PER VOL. 6, PG. 6)

AFFIDAVIT OF CORRECTION
RECORDED FEB. 10, 1997
BOOK 1454 PAGE 892 & 893
C.S. FILE 65/14-4 A & B

THE LOCATION OF THE 10' WIDE PUBLIC UTILITY EASEMENT ORIGINALLY PLACED ALONG THE SOUTH LINE OF LOT 5, BK 1 IS ALSO ADJUSTED TO LIE SOUTH OF & PARALLEL TO THE ADJUSTED PROPERTY LINE & AS SHOWN ON EXHIBIT 'A' (BK 1454 PG 893, C.S. 65/14-4 B)

NARRATIVE:

FOUND MONUMENTS ON HARRIS HILLS SUBDIVISION AND HARRIS HILLS 1st ADDITION AS SHOWN. USED RECORD BEARINGS AND DISTANCES FROM MONUMENTS FOUND ALONG THE NORTHWESTERLY LINE OF SAID HARRIS HILLS SUBDIVISION TO DUPLICATE PERIMETER. INVERSED FROM COMPUTED SOUTHWEST CORNER OF LOT 4 TO FOUND MONUMENT ON SOUTH LINE OF LOT 3. ALL REMAINING LINES PER RECORD AS MONUMENTS WERE WELL WITHIN TOLERANCE.

FIELD CREW: NEIL HIBBS, ROD McALLISTER
OFFICE: NEIL HIBBS
DRAFTING: BETH MORGAN
EQUIPMENT: NIKON DTM - A - 10
REF. MAPS: VOL. 17, PAGE 62A, VOL. 17, PAGE 2B, M 109 - 8, VOL. 6, PAGE 6

- Ⓐ LC = N8°26'46"W 96.04'
R = 788.51' ARC = 96.10'
- Ⓑ LC = N6°19'59"W 38.00'
R = 788.51' ARC = 38.00'
- Ⓒ LC = N9°49'42"W 58.08'
R = 788.51' ARC = 58.10'
- Ⓓ LC = N13°32'46"W 44.27'
R = 788.51' ARC = 44.27'
- Ⓔ LC = N15°32'23"W 10.58'
R = 788.51' ARC = 10.58'
- Ⓕ LC = N11°41'25"W 27.34'
R = 184.85' ARC = 27.37'

- Ⓗ LC = N3°43'17"W 23.99'
R = 184.85' ARC = 24.00'
- Ⓙ LC = S4°07'56"W 22.32'
R = 154.85' ARC = 22.32'
- Ⓚ LC = S12°06'23"E 20.68'
R = 154.85' ARC = 20.68'
- Ⓛ LC = S6°28'25"E 48.59'
R = 818.51' ARC = 48.60'
- Ⓟ LC = S10°20'55"E 159.04'
R = 818.51' ARC = 159.06'

APPROVAL:

Randy A. Bentz Aug. 30, 1993
CITY OF ROSEBURG COMMUNITY DEVELOPMENT DIRECTOR DATE

<p>REGISTERED OREGON LAND SURVEYOR</p> <p><i>Donald A. Bentz</i></p> <p>JULY 12, 1988 DONALD A. BENTZ 839</p> <p>EXPIRES 12-31-93</p>	<p>PROPERTY LINE ADJUSTMENT OF LOTS 3, 4, & 5, BLOCK 1, HARRIS HILLS SUBDIVISION AND A PORTION OF SHINN'S ADDITION LYING IN: N.W. 1/4, SEC. 23, T 27 S, R 6 W WILLAMETTE MERIDIAN, DOUGLAS COUNTY, OREGON</p>	
	<p>SURVEYED FOR: ROSEBURG PAVING, INC. P.O. BOX 1427 ROSEBURG, OREGON 97470</p>	<p>SURVEYED BY: i.e. ENGINEERING</p> <p>1205 S.E. Court Street Roseburg, Oregon 97470 PHONE (503) 673-0166 FAX (503) 440-9392</p>
<p>SCALE: 1" = 50'</p>	<p>DATE: JULY 1993</p>	<p>280 - 04</p> <p>PAGE: 1 OF 1</p>

COUNTY SURVEYORS FILE DATA
DO NOT REMOVE FROM OFFICE