

# LONE ROCK TIMBER CO.

PO BOX 1127 ROSEBURG, OREGON 97470 JUNIPER PROPERTIES LIMITED PARTNERSHIP  
SECTION 31, TOWNSHIP 23 SOUTH, RANGE 5 WEST, W.M. DOUGLAS COUNTY, OREGON

RICE VALLEY SURVEY SCALE 1" = 500' DATE: JULY 1993

FILED

SEP 10 1993

COUNTY SURVEYOR  
DOUGLAS COUNTY, ORE.

REGISTERED  
PROFESSIONAL  
LAND SURVEYOR

*Ken W Hoffine*  
OREGON  
JULY 16, 1987  
KEN M. HOFFINE  
228

EXPIRES 12-31-93



**LEGEND:**

- - FOUND MONUMENT
- - SET 5/8" BY 40" IRON ROD WITH ALUMINUM CAP
- - PROJECTED LINES
- - LINES FLAGGED, BLAZED & TAGGED
- ( ) - BLA RECORD SURVEY FILED IN DOUGLAS COUNTY SURVEYORS OFFICE (CHAINS CONVERTED TO FEET)
- (( )) - MILFORD HAINES RECORD SURVEY FILED IN DOUGLAS COUNTY SURVEYORS OFFICE #A33-15
- (|||) - DON E. GARRETT RECORD SURVEY FILED IN DOUGLAS COUNTY SURVEYORS OFFICE #A49-38
- (||||) - DOUGLAS C. ROSECRANS RECORD SURVEY FILED IN DOUGLAS COUNTY SURVEYORS OFFICE #A72-17
- ▲ - COMPUTED NOT SET

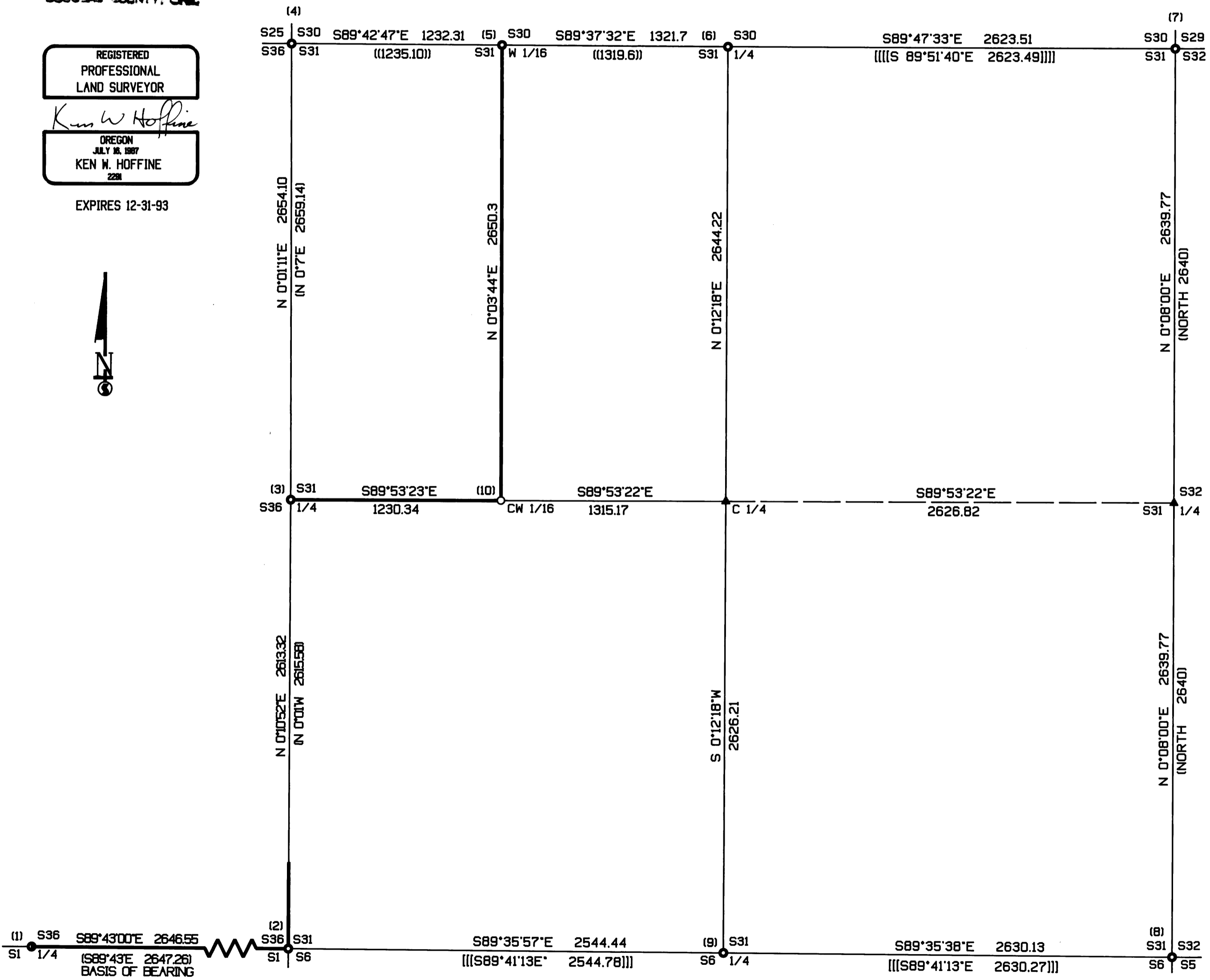
**NARRATIVE**

THIS SURVEY WAS CONDUCTED TO ESTABLISH PROPERTY LINES FOR TIABER CUTTING PURPOSES. WE INITIATED THE SURVEY AT A BLA BCIP SET FOR THE S 1/4 OF SECTION 36, T23S, R6W, TRAVERSING EAST TO THE SE TOWNSHIP CORNER, A BLA BCIP, MARKING TRUE LINE. WE THEN TRAVERSED NORTH, MARKING TRUE LINE FOR APPROXIMATELY 500 FEET, CONTINUING OUR TRAVERSE TO THE WEST 1/4 AND NW SECTION CORNER OF SECTION 31, BOTH OF WHICH ARE BLA BCIP. WE THEN TRAVERSED EAST TO THE WEST 1/16 BETWEEN SECTIONS 31 AND 30, 1/2" IRON PIPE BY HAINES, CONTINUING TO THE NORTH 1/4 SECTION 31; 2" CAST IRON CASING RECORDED BY HAINES, TO THE NE SECTION CORNER OF 31, A COUNTY BCIP. WE TRAVERSED SOUTH TO THE APPROXIMATE LOCATION OF THE EAST 1/4 OF SECTION 31 AND COULD FIND NO TRACE OF ORIGINAL EVIDENCE, AND THEN CONTINUED TO THE SE CORNER OF 31 TO A COUNTY BCIP. WE THEN TRAVERSED TO THE S 1/4 OF SECTION 31, SET BY GARRETT BY PROPORTION, THEN CLOSED OUR TRAVERSE BACK TO THE S 1/4 OF SECTION 36. AFTER COMPUTING THE LOCATION OF THE CW 1/16 OF SECTION 31, WE SET THE CORNER AND MARKED TRUE LINE WEST TO THE WEST 1/4 OF SECTION 31 AND NORTH TO THE W 1/16 BETWEEN SECTION 31 AND SECTION 30. SURVEY WAS DONE WITH A LEITZ SET 2 TOTAL STATION WITH GARY ANGIOLET AND PAT KELLY ASSISTING ME.

**CORNER INFORMATION**

THE FOLLOWING IS A RECORD OF ALL CORNERS FOUND OR SET DURING THE COURSE OF THE SURVEY.

- (1) S 1/4 CORNER OF T23S, R6W, SECTION 36  
FOUND 1943 2" GLO BRASS CAP, 1 FOOT ABOVE GROUND  
--DECAYED STUAP DOUGLAS FIR APPROXIMATELY 48" BEARING S10°W (RECORD N10°E), 97.2 FEET FROM CORNER. THERE WERE NO IDENTIFYING MARKS ON THE STUAP  
--23" DOUGLAS FIR BEARS N77°W, 32.5 FEET FROM THE CORNER, WELL HEALED SCAR WITH TAGS AND PAINT FOR IDENTIFYING MARKS ON STUAP  
--21" DOUGLAS FIR BEARS S6°E, 61.75 FEET FROM CORNER. THERE IS NO SCAR, I TAGGED AND PAINTED TREE CORNER LIES 3/4 UP A WESTERLY SLOPED RIDGE.
- (2) SW CORNER OF T23S, R5W, SECTION 31  
FOUND 1943 2 1/2" GLO BRASS CAP 0.1 FEET ABOVE GROUND  
--50" DOUGLAS FIR BLOW DOWN BEARS N83°W, 185 FEET (RECORD 184.8 FEET) FACE IS CHOPPED OUT  
--54" DOUGLAS FIR STUAP BEARS N58°E, 40.0 FEET (RECORD 39.6 FEET) FACE CHOPPED OUT WITH SCRIBE VISIBLE  
--36" DOUGLAS FIR STUAP BEARS S18°W, 117.0 FEET FACE CHOPPED OUT WITH SCRIBE VISIBLE  
--36" DOUGLAS FIR STUAP BEARS S62°E, 84.0 FEET FACE CHOPPED OUT WITH SCRIBE VISIBLE  
--15" DOUGLAS FIR BEARS N66°W, 30.2 FEET, COUNTY TAG WITH A HEALED SCAR  
--36" DOUGLAS FIR BEARS N85°E, 30.7 FEET, COUNTY TAG WITH A HEALED SCAR  
--16" DOUGLAS FIR BEARS S54°W, 27.0 FEET TAGS WITH SCRIBE VISIBLE  
--22" DOUGLAS FIR BEARS S7°30'E, 62.0 FEET, COUNTY TAG WITH A WELL HEALED SCAR  
CORNER LIES ON A 40% SW SIDE SLOPE LOCATED NEXT TO OLD FENCE CORNER. THE FENCE BEARS SOUTH, EAST AND WEST.
- (3) WEST 1/4 CORNER OF T23S, R5W, SECTION 31  
FOUND 1943 2 1/2" GLO BRASS CAP 0.5 FEET ABOVE GROUND  
--29" OAK BEARS N3°W, 9.2 FEET (RECORD 8.0 FEET). "WC" CHOPPED IN TRUNK, WELL HEALED SCAR, I TAGGED AND PAINTED TREE  
--28" OAK BEARS S38°E, 11.8 FEET (RECORD 11.0 FEET). OLD BLAZE 5 FEET ABOVE STUAP, I TAGGED AND PAINTED TREE  
CORNER LIES ON A SRAID SLOPE BENCH APPROXIMATELY 600 FEET NORTH OF OLD ROAD IN DRAW. OLD FENCE LINE 8 FEET NORTH OF CORNER AND BEARS EAST.
- (4) NW CORNER OF T23S, R5W, SECTION 31  
FOUND A 1943 2 1/2" GLO BRASS CAP 0.5 FEET ABOVE GROUND.  
--11 1/2" DOUGLAS FIR BEARS N27°W, 65.0 FEET, SCRIBING VISIBLE WITH BLA TAG.  
--18" OAK BEARS N45°W, 5.4 FEET, WEYCO TAG, NO MARKS  
--10" OAK BEARS N54°E, 14.1 FEET, SCRIBING VISIBLE WITH BLA TAG  
--21" DOUGLAS FIR BEARS S25°E, 200 FEET, WITH A HEALED SCAR, I TAG TREE  
--24" OAK BEARS S81°W, 29.4 FEET, WITH A HEALED SCAR, TAG TREE  
--24" OAK SNAG BEARS N34°E, 122 FEET, NO MARKS VISIBLE  
CORNER LIES ON THE NORTH EDGE OF GRASS FIELD, SPARSE OAK AND FIR TO THE NORTH. FENCE LINE BEARS NORTH AND EAST FROM CORNER.
- (5) W 1/6 CORNER SECTION 30 AND SECTION 31, T23S, R5W  
FOUND 1/2" IRON PIPE 0.3 FEET ABOVE GROUND.  
--15" DOUGLAS FIR STUAP BEARS N51°E, 35.5 FEET, NO IDENTIFYING MARKS ON TREE  
--I TAGGED 4" ROUND GATE POST WHICH BEARS JUST SOUTH OF THE PIPE  
CORNER IS LOCATED ON FLAT BOTTDG GROUND APPROXIMATELY 30 FEET WEST OF FOOT HILL. FENCE LINE BEARS EAST-WEST AND FENCE LINE WITH GATE BEARS SOUTH.
- (6) N 1/4 CORNER T23S, R5W, SECTION 31  
FOUND 2" IRON CASTING AT GROUND LEVEL.  
--31" OAK BEARS S22°W, 126.6 FEET, OLD SCAR VISIBLE, I TAG TREE  
--34" DOUGLAS FIR STUAP BEARS S19°E, 33.6 FEET (RECORD 38.6 FEET), OLD SCAR VISIBLE HAINES WASHER ON FRONT, I TAG TREE  
--VERY OLD DOUGLAS FIR STUAP REMAINS BEARING S4°W, 38.0 FEET  
CORNER LIES ON GENTLE SOUTH WEST SLOPE APPROXIMATELY 120 FEET SOUTH OF SPUR RIDGE TOP. CORNER BEARS 1 FOOT EAST OF NORTH-SOUTH FENCE LINE AND 2 FEET SOUTH OF FENCE LINE TO THE EAST.
- (7) NE CORNER OF T23S, R5W, SECTION 31  
FOUND 1959 COUNTY SURVEYORS OFFICE 2" BRASS CAP, 1 FOOT ABOVE GROUND.  
--59" CEDAR BEARING N10°30'E, 66.0 FEET, WELL HEALED SCRIBE WITH BT TAG  
--65" CEDAR STUAP BEARING S17°30'W, 32.4 FEET (RECORD 33.3 FEET), NO MARKS, I TAGGED STUAP  
--17" OAK STUAP "ROTTING" BEARING S89°E, 98.6 FEET, NO MARKS ON STUAP, BT TAG  
--REMAINS OF OAK STUAP N60°E, 127.4 FEET  
--36" DOUGLAS FIR STUAP S17°E, 194.7 FEET, HAS BEEN DESTROYED  
CORNER LIES ON THE EAST EDGE OF THE RICE VALLEY COUNTY ROAD R/W.
- (8) SE CORNER OF T23S, R5W, SECTION 31  
FOUND 2" BRASS CAP, 1 FOOT ABOVE GROUND ON WEST EDGE OF FENCE POST.  
--27" DOUGLAS FIR BEARS N53°30'W, 23.4 FEET, WELL HEALED SCRIBE WITH BT TAG  
--22" DOUGLAS FIR BEARS N48°E, 17.61 FEET, WELL HEALED SCRIBE WITH BT TAG, I ALSO TAG TREE  
--15" OAK BEARS S63°E, 45.1 FEET, WELL HEALED SCRIBE WITH BT TAG  
--14" OAK BEARS S87°W, 93.5 FEET, WELL HEALED SCRIBE WITH BT TAG  
--IRON SQUARE BAR BEARS S47°W, 1.75 FEET  
CORNER LOCATED ON A GENTLE SOUTH SLOPE. TIABER IS LOCATED TO THE NORTH AND A FIELD TO THE SOUTH. CORNER LIES IN A EAST-WEST FENCE LINE WITH FENCE LINE ALSO BEARING NORTH FROM CORNER.
- (9) S 1/4 OF SECTION 31, T23S, R5W  
FOUND 1973 RPLS 544 2" BRASS CAP 1 FOOT ABOVE GROUND, LOCATED 5 FEET OF SOUTH FENCE LINE COURSE EAST WEST AND 13 1/2 FEET WEST OF FENCE STARTING TO THE SOUTH.  
--13" DOUGLAS FIR BEARS N26°W, 15.4 FEET, WELL HEALED SCAR AND BT TAGS  
--21" DOUGLAS FIR STUAP BEARS S20°E, 40.7 FEET, WELL HEALED SCAR AND BT TAGS  
CORNER IS LOCATED ON GENTLE EAST SLOPE IN SPARSE DOUGLAS FIR AND OAK STAND WITHIN A GRASS FIELD. CORNER LIES 5 FEET SOUTH OF EAST-WEST FENCE LINE AND 13 1/2 FEET EAST OF SOUTH FENCE LINE.
- (10) CW 1/16 OF T23S, R5W, SECTION 31  
SET: WE SET A 2" LRT ALUMINUM CAP, 1 FOOT ABOVE GROUND.  
--24" DOUGLAS FIR BEARS N59°W, 55.63 FEET FROM THE CORNER. WE SCRIBE TREE CW 1/16 S31 BT AND TAG  
--18" DOUGLAS FIR BEARS S89°30'E, 39.32 FEET FROM THE CORNER. WE SCRIBE TREE CW 1/16 S31 BT AND TAG  
CORNER LIES ON A 55% SOUTH FACING SLOPE. VERY OLD BROKEN DOWN NORTH AND EAST FENCE LINE CORNERS AT AN OAK TREE WHICH BEARS N63°W 45 FEET FROM OUR CW 1/16.



MAP FILE: M117 - 52..

MAP FILE: M117 - 52..