

SC
SC

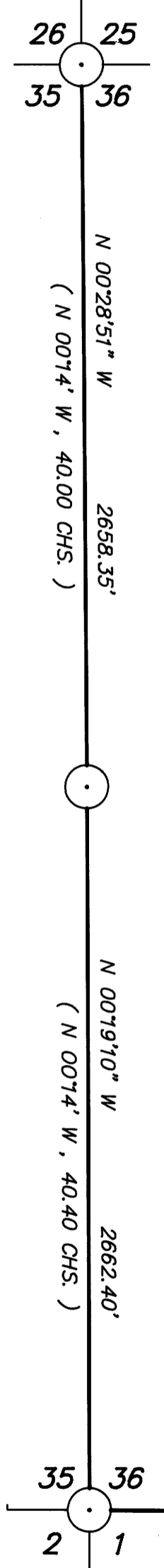
MAP FILE M 117-5

- NARRATIVE -

THIS SURVEY WAS MADE IN MARCH, 1993 BY DONALD L. PEEL OF PEEL BAKER LAND SURVEYING, INC. 1385 OAK STREET - SUITE 3, EUGENE, OREGON. THE PURPOSE OF THIS SURVEY WAS TO LOCATE AND MARK THE SOUTH AND WEST LINES OF SECTION 36, T23S, R4W, W.M. A WILD T1000 THEOMAT AND DISS E.D.M. AND KERN KIS THEODOLITE AND DM502 E.D.M. WERE USED TO PERFORM THIS SURVEY. BEARINGS WERE BASED ON A SOLAR OBSERVATION. CLOSED RANDOM TRAVERSES WERE RUN BETWEEN FOUND CORNERS FOR CONTROL. OFFSETS FROM THE RANDOM TRAVERSE LINE TO THE TRUE PROPERTY LINE WERE CALCULATED AND USED TO DETERMINE THE POSITION OF THE TRUE PROPERTY LINE. THE TRUE PROPERTY LINE WAS MARKED IN THE FIELD BY BLAZING TREES (BLAZES NOTCHED AND PAINTED RED) ON BOTH SIDES OF THE TRUE LINE. THE SOUTHEAST SECTION CORNER, SOUTH 1/4 CORNER, SOUTHWEST SECTION CORNER, WEST 1/4 CORNER AND THE NORTHWEST SECTION CORNER WERE ALL FOUND AND USED FOR CONTROL. AT THE NORTHWEST SECTION CORNER I FOUND TWO MONUMENTS, ONE SET BY WILFORD HAINES IN THE EARLY 1960s AND ANOTHER SET IN C.S. M111-30 IN 1990. THE C.S. M111-30 CORNER WAS 8.37' EASTERLY OF THE HAINES CORNER. IN 1965, V.R. TRACY OF THE DOUGLAS COUNTY SURVEYORS OFFICE VISITED THIS CORNER AND FOUND ALL FOUR OF THE ORIGINAL BEARING TREES (SEE RENEWAL NO. 141). TRACY ALSO FOUND FOUR NEW BEARING TREES THAT HE STATED WERE NOT SET BY HAINES. UPON REVIEW OF HAINES FIELD BOOK (DOUGLAS COUNTY F.B. H-237) I FOUND REFERENCE TO THESE BEARING TREES, THUS I ASSUMED THEY WERE MARKED BY HAINES. AS TRACY NEVER SET A NEW CORNER OR MARKED ANY NEW BEARING TREES, I ASSUMED HE AGREED WITH THE CORNER POSITION AS ESTABLISHED BY HAINES. AT THIS TIME, I FOUND THE ROTTED REMAINS OF AN APPROXIMATELY 40" FIR STUMP (NO VISIBLE SCRIBING) N 9-1/4 W, 217.0' (RECORD, N 5 W, 221.1'), THE ROTTED REMAINS OF A 36" FIR STUMP (NO VISIBLE SCRIBING) N 23-3/4 E, 106.6' (RECORD, N 19 E, 102.3') AND THE ROTTED REMAINS OF AN APPROXIMATELY 48" FIR STUMP (NO VISIBLE SCRIBING) S 72-3/4 W, 109.4' (RECORD, S 75 W, 113.5') AND I FIND NO TRACE OF THE 6" FIR (WHEN SET IN 1884) S 49-1/2 E, 73.9'. THESE MEASUREMENTS WERE FROM THE HAINES CORNER. HAD I BEEN THE FIRST SURVEYOR TO DETERMINE THIS CORNER POSITION, BASED ON MY ANALYSIS OF WHAT I BELIEVE TO BE THE ORIGINAL BEARING TREES, I PROBABLY WOULD HAVE SET THE CORNER APPROXIMATELY 2-3/4 FEET SOUTH OF THE HAINES CORNER. AS THE HAINES CORNER HAS BEEN IN EXISTENCE FOR APPROXIMATELY 30 YEARS AND AS THE ORIGINAL CALLS FROM THE EXISTING ORIGINAL BEARING TREES WILL NOT COME TOGETHER AT A COMMON POINT, THE FIXING OF A CORNER POSITION IS JUDGEMENTAL SO I ACCEPT THE CORNER POINT AS ESTABLISHED BY HAINES. THE POSITION OF THE C.S. M111-30 CORNER WAS DETERMINED ON THE BASIS OF A FOUND CEDAR STUMP IN THE NORTHWEST QUADRANT AND A ROTTED FIR STUMP OF APPROXIMATELY 40 TO 48 INCHES IN DIAMETER IN THE SOUTHEAST QUADRANT. I BELIEVE THE ORIGINAL SURVEYOR KNEW THE DIFFERENCE BETWEEN A CEDAR AND A FIR AND I FIND IT HARD TO BELIEVE THAT THE FIR STUMP IN THE SOUTHEAST QUADRANT, TIED IN C.S. M111-30, WAS A 6" FIR IN 1884.

SECTION CORNER 25, 26, 35, 36

FOUND : WILFORD HAINES "T" BAR WITH BRASS DISK
ROTTED REMAINS OF THREE ORIGINAL B.T.s. - SEE NARRATIVE
21" FIR STUMP, N 67-1/2 E, 22.0' - CLOSED FACE, G.L.O. AND U.S.F.S. TAGS
25" CEDAR, S 62-3/4 E, 68.9' - VISIBLE SCRIBE, U.S.F.S. TAG
14" MADRONE, S 37-1/4 E, 63.2' - OPENED FACE, NO VISIBLE SCRIBING
11" HEMLOCK, S 58-1/2 W, 44.8' - VISIBLE SCRIBE, WEYCO & U.S.F.S. TAGS
46" CEDAR, S 72-1/2 W, 93.6' - FACE PARTIALLY CHOPPED INTO PREVIOUSLY
11" HEMLOCK, N 56-3/4 W, 38.7' - VISIBLE SCRIBE, WEYCO & U.S.F.S. TAGS
30" FIR, N 9-3/4 W, 61.6' - CLOSED FACE, U.S.F.S. TAG



REGISTERED PROFESSIONAL LAND SURVEYOR
Donald L. Peel
OREGON JULY 8, 1968
DONALD L. PEEL
752
EXPIRES 12/31/94

1/4 CORNER 35 & 36

FOUND : 1-1/4" IRON PIPE WITH DOUGLAS COUNTY BRASS CAP DATED 1968
54" FIR SNAG, S 32 E, 6.4' - CLOSED FACE, WEYCO TAG
38" FIR SNAG, N 38-3/4 W, 5.8' - CLOSED FACE, WEYCO TAG

1/4 CORNER 36 & 1

FOUND : 1-1/4" IRON PIPE WITH DOUGLAS COUNTY BRASS CAP DATED 1963
41" CEDAR, S 50 W, 28.4" - WEYCO TAG
32" CEDAR, S 64 W, 36.1' - SCRIBE VISIBLE - B.L.M. TAG
32" FIR STUMP, N 8 E, 31.1' - WEYCO TAG
14" YEW, N 28-3/4 E, 6.6' - SCRIBE VISIBLE - G.L.O. TAG

SECTION CORNER 35, 36, 1, 2

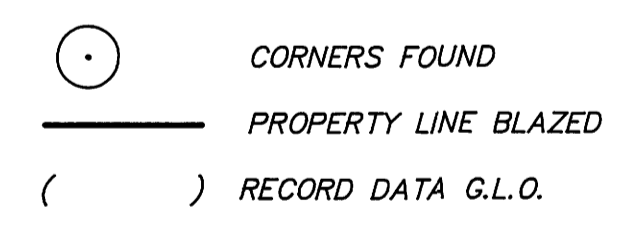
FOUND : 2-1/2" IRON PIPE WITH B.L.M. BRASS CAP DATED 1957
IN MOUND OF STONES
35" FIR STUMP, N 3 E, 58.0' - WEYCO TAG
19" FIR, N 51 E, 30.9' - CLOSED FACE, B.L.M. TAG
30" FIR STUB, S 56 E, 47.9' - VISIBLE SCRIBE
16" CEDAR, S 46 E, 49.5' - VISIBLE SCRIBE, B.L.M. TAG
15" HEMLOCK, S 10 E, 17.7' - CLOSED FACE, B.L.M. TAG
30" FIR, S 30 W, 48.3' - CLOSED FACE, B.L.M. TAG
47" CEDAR, S 81 W, 39.2' - B.L.M. & WEYCO TAGS

SOUTHEAST CORNER SECTION 36 ONLY

FOUND : 2-3/4" IRON PIPE WITH 3-1/2" G.L.O. BRASS CAP "1950"
9" HEMLOCK, N 62-2/2 W, 27.3' - VISIBLE SCRIBING, B.L.M. TAG
13" CEDAR STUB, N 32-1/2 W, 65.5' - VISIBLE SCRIBE, WEYCO TAG
16" FIR, S 20-1/2 W, 29.0' - CLOSED FACE, B.L.M. TAG
58" FIR STUMP, S 49 W, 31.7' - WEYCO TAG

BASIS OF BEARING : SOLAR OBSERVATION

SCALE : 1" = 500'



SURVEY OF SOUTH & WEST LINES SECTION 36, T23S, R4W, W.M. DOUGLAS COUNTY, OREGON

FOR WEYERHAEUSER COMPANY BY PEEL BAKER LAND SURVEYING, INC. 1385 OAK STREET - SUITE 3, EUGENE, OREGON MARCH 25, 1993

COUNTY SURVEYORS FILE DATA DO NOT REMOVE FROM OFFICE

MAP FILE M 117-5