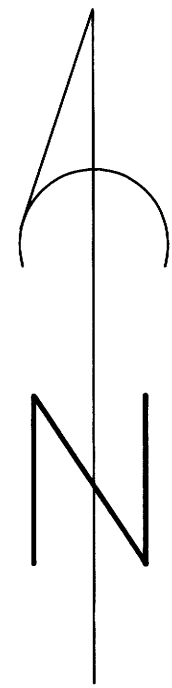


# RESURVEY & SUBDIVISION OF SW 1/4 & SE 1/4 SECTION 28, T32S, R7W, W.M.

FOR ROSEBURG RESOURCES CO

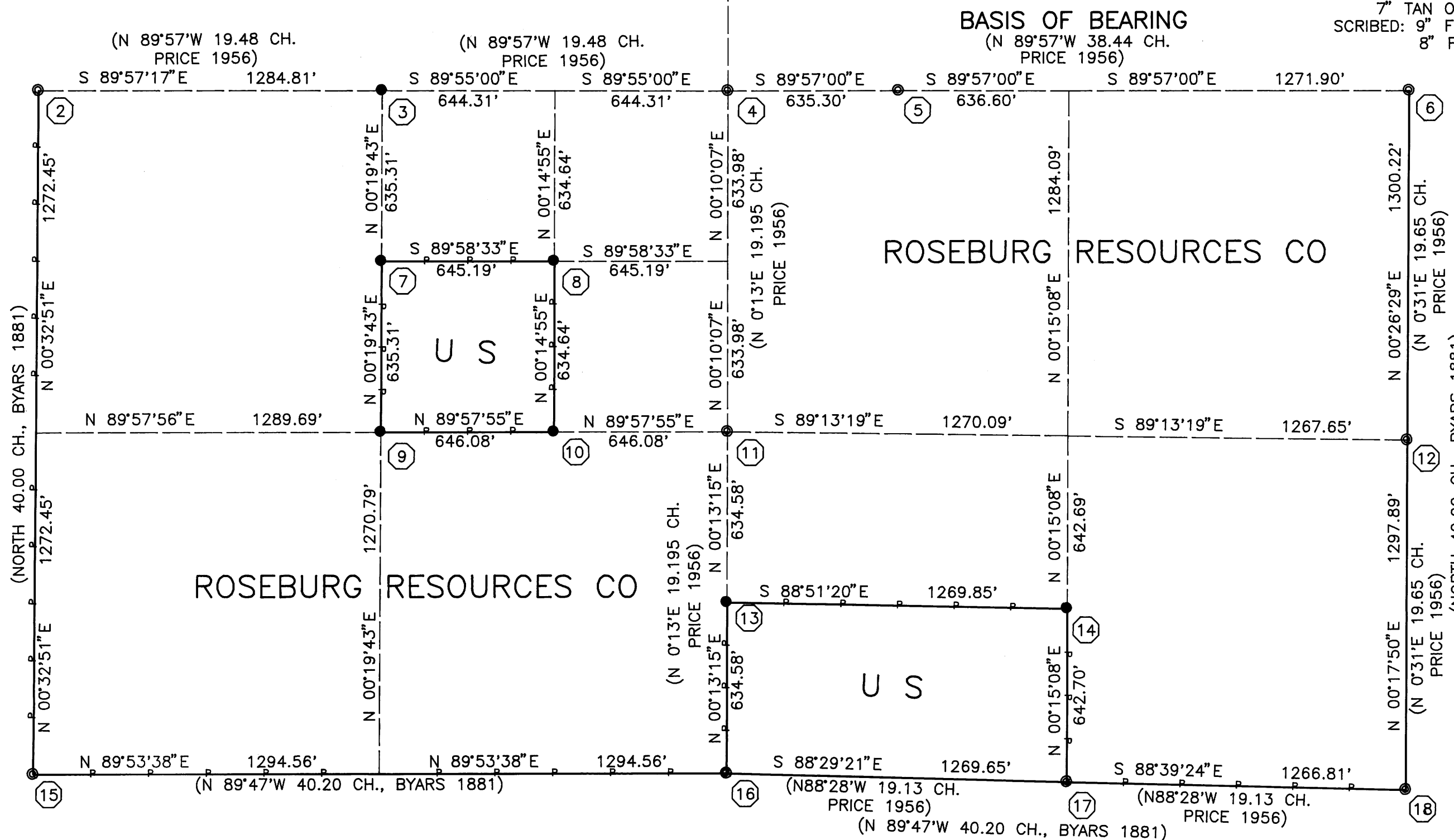
BY: MARK F. SMALLEY  
 ROSEBURG RESOURCES CO  
 P. O. BOX 1088  
 ROSEBURG, OREGON



## LEGEND

- MONUMENT FOUND AS NOTED
- SET 5/8" IRON ROD AND ALUMINUM CAP
- SECTION OR PROPERTY LINE
- - - SUBDIVISION LINE
- LINE MARKED WITH METAL FENCE POSTS
- ( ) RECORD DATA

SCALE: 1" = 400'



- ① 1/4 CORNER 21/28  
 FOUND 1978 CADASTRAL BCIP  
 BTs: 12" FIR S13°E 28.4' BARK SCRIBED  
 FACED AND RESCRIBED "1/4 S 28 BT"  
 28" PINE N45°W 11.2' DEAD  
 5" TAN OAK N60°E 12.2' DEAD SCRIBE VISIBLE  
 5" TAN OAK S5°W 17.2' DEAD SCRIBE VISIBLE  
 SCRIBED: 7" FIR S53°W 20.2' "1/4 S 28 BT"  
 6" FIR N10°W 12.0' "1/4 S 21 BT"  
 7" FIR S46°E 21.5' "1/4 S 28 BT"
- ② 1/4 CORNER 29|28  
 FOUND 1 1/2" IRON PIPE  
 BTs: 14" CHINQUAPIN N72°W 4.0' SCRIBE VISIBLE  
 10" CHINQUAPIN S72°E 7.3' SCRIBE VISIBLE  
 SCRIBED: 9" CHINQUAPIN N44°E 15.6' "1/4 S 28 BT"  
 8" FIR S14°W 28.0' "1/4 S 29 BT"
- ③ CW 1/16 CORNER  
 FOUND BTs: 30" FIR N68°W 91.1  
 28" FIR S6°W 110.9  
 SET 5/8"X48" IR & ALUMINUM CAP MARKED LS 2354
- ④ C 1/4 CORNER  
 FOUND 1 1/2" IRON PIPE  
 BTs: 14" FIR N27°E 62.7' SNAG SCRIBE VISIBLE  
 14" CEDAR S26°E 137.9' DOWN & ROTTEN  
 SCRIBED: 12" CEDAR S30°E 100.6' "C 1/4 S BT"  
 14" FIR S26°W 48.4' "C 1/4 S BT"  
 8" FIR N46°E 18.7' "1/4 S BT"  
 14" FIR N8°W 52.0' "C 1/4 S BT"
- ⑤ CWE 1/64 CORNER  
 FOUND 1 1/4" IRON PIPE 0.36' NORTH OF LINE  
 BTs: 34" FIR NORTH 4.6' HEALED FACE  
 ROOT HOLE S9°W 25.1' (WAS 14" FIR)

- ⑥ 1/4 CORNER 28|27  
 FOUND 1 1/2" IRON PIPE TAGGED "RS 233"  
 BTs: 30" MADRONE N15°W 13.2' PART HEALED  
 7" CHINQUAPIN N60°E 19.8' PART HEALED  
 16" MADRONE S73°W 25.7' DEAD HEALED FACE  
 SCRIBED: 7" FIR S13°E 10.0' "1/4 S 27 BT"  
 5" FIR S42°W 13.0' "1/4 S 28 BT"
- ⑦ CN SW 1/64 CORNER  
 SET 5/8"X48" IR & ALUMINUM CAP MARKED "LS 2354"  
 SCRIBED: 16" FIR S56°W 12.2' "CN SW 1/64 BT"  
 12" FIR S62°E 21.5' "CN SW 1/64 BT"
- ⑧ NE SW 1/64 CORNER  
 SET 5/8"X48" IR & ALUMINUM CAP MARKED "LS 2354"  
 SCRIBED: 14" FIR S20°W 29.8' "NE SW 1/64 BT"  
 20" FIR N70°W 28.7' "NE SW 1/64 BT"
- ⑨ SW 1/16 CORNER  
 SET 5/8"X48" IR & ALUMINUM CAP MARKED "LS 2354"  
 SCRIBED: 5" FIR S53°W 23.0' "1/16 BT"  
 24" FIR N85°E 46.0' "SW 1/16 BT"
- ⑩ CE SW 1/64 CORNER  
 SET 5/8"X48" IR & ALUMINUM CAP MARKED "LS 2354"  
 SCRIBED: 12" FIR NORTH 20.6' "CE SW 1/64 BT"  
 6" PINE N30°E 13.9' "CE SW 1/64 BT"
- ⑪ CS 1/16 CORNER  
 FOUND 1 1/4" IRON PIPE  
 BTs: 16" FIR N2°W 17.8' HEALED FACE  
 8" FIR S41°W 12.5' HEALED FACE
- ⑫ S 1/16 CORNER 28|27  
 FOUND 1 1/4" IRON PIPE  
 BTs: 38" PINE N48°E 5.3' ROTTEN STUMP  
 7" TAN OAK S67°W 37.0' DEAD SCRIBE VISIBLE  
 SCRIBED: 9" FIR N33°W 13.7' "1/16 S BT"  
 8" FIR S21°E 36.7' "1/16 S BT"

- ⑬ CSS 1/64 CORNER  
 SET 5/8"X48" IR & ALUMINUM CAP 30' SOUTH ON LINE  
 MARKED "WC CSS 1/64 LS 2354"  
 SCRIBED: 8" ALDER S31°E 18.2' "WC 1/64 BT"  
 12" MAPLE S8°W 31.2' "WC 1/64 BT"
- ⑭ CS SE 1/64 CORNER  
 SET 5/8"X48" IR & ALUMINUM CAP MARKED "LS 2354"  
 SCRIBED: 12" FIR S2°W 16.7' "S 28 1/64 BT"  
 12" FIR N81°W 19.8' "S 28 1/64 BT"
- ⑮ SECTION CORNER 29|28  
 32|33  
 FOUND 1967 COUNTY SURVEYOR BCIP  
 BTs: 60" FIR N54°W 85.8' HEALED FACE  
 10" LAUREL N44°W 12.8' SCRIBE VISIBLE  
 60" FIR N18°E 58.1' BARK SCRIBE  
 13" LAUREL N45°E 33.2' SCRIBE VISIBLE  
 12" LAUREL S26°E 2.7' SCRIBE VISIBLE  
 14" LAUREL S9°W 20.0' SCRIBE VISIBLE
- ⑯ 1/4 CORNER 28/33  
 FOUND 1 1/2" IRON PIPE  
 BTs: 34" FIR N15°W 31.7' HEALED FACE  
 16" FIR S22°E 21.1' ROTTEN STUMP  
 30" FIR S38°W 21.0' HEALED FACE  
 SCRIBED: 11" MADRONE N14°E 25.5' "1/4 S 28 BT"  
 18" FIR S79°W 74.5' "1/4 S33 BT"
- ⑰ E 1/16 CORNER 28/33  
 FOUND 1 1/4" IRON PIPE  
 BTs: 22" FIR N83°W 14.5' HEALED FACE  
 11" MADRONE S37°E 8.9' HEALED FACE
- ⑱ SECTION CORNER 28|27  
 33|34  
 FOUND 1977 COUNTY SURVEYOR BCIP  
 BTs: 10" TAN OAK N42°W 86.1' HEALED FACE  
 30" FIR S42°E 117.1' STUMP SCRIBE VISIBLE  
 18" LIVE OAK S81°E 76.6' SCRIBE VISIBLE  
 5/8" IRON ROD S42°E 106.8', 2 1/2" TALL  
 16" FIR S44°W 97.8' HEALED FACE

## NARRATIVE

THE PURPOSE OF THIS SURVEY WAS THE SUBDIVISION OF THE SW 1/4 AND SE 1/4 OF SECTION 28, T32S, R7W, W.M. THE PROPERTY LINES WERE BLAZED, PAINTED AND MARKED WITH 6' STEEL FENCE POSTS.

THE CONTROL FOR THIS SURVEY WAS THE 1956 DEPENDENT RESURVEY AND SUBDIVISION DONE BY NORMAN D. PRICE (CS 42/142) AND THE SOUTHWEST SECTION CORNER AS RENEWED BY THE COUNTY SURVEYOR IN 1967 (R-68). PRICE'S CORNER FOR THE CWE 1/64 WAS NOT USED IN THE SUBDIVISION, HOWEVER HIS C 1/4, CS 1/16, CW 1/16, E 1/16 28/33 AND S 1/16 28/27 WERE USED, ALL FOUND AS NOTED.

THE BASIS OF BEARING IS THE EAST 1/2 MILE OF THE EAST-WEST CENTERLINE OF SECTION 28 AS ESTABLISHED BY PRICE.

THIS SURVEY WAS PERFORMED IN JUNE AND JULY 1993 USING A TOPCON GTS-302 TOTAL STATION TO RUN CLOSED LOOP TRAVERSES.

REGISTERED  
 PROFESSIONAL  
 LAND SURVEYOR

*Mark F. Smalley*

OREGON  
 JULY 28, 1988  
 MARK F. SMALLEY  
 2354

EXPIRES 12/31/94

COUNTY SURVEYORS FILE DATA  
 DO NOT REMOVE FROM OFFICE