

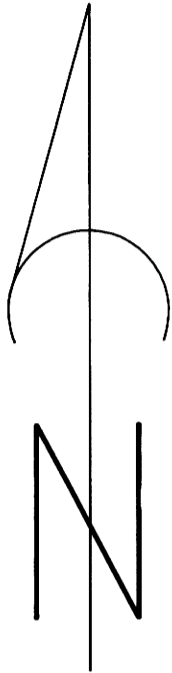
# SURVEY TO RE-ESTABLISH THE NORTH LINE OF SECTION 26, T. 32 S., R. 7 W., W. M., DOUGLAS COUNTY, OREGON.

AUG 24 1993 JC

MAP FILE M117-43

FOR: ROSEBURG RESOURCES CO.

BY: MARK F. SMALLEY  
ROSEBURG RESOURCES CO.  
P. O. BOX 1088  
ROSEBURG, OR 97470



SCALE: 1" = 300'

### LEGEND

- ⊙ MONUMENT FOUND AS NOTED
- SET 5/8" IRON ROD & ALUMINUM CAP MARKED "LS 2354"
- SECTION LINE
- ( ) RECORD DATA
- DRY RAVINE
- >>> TOP RIDGE

### NARRATIVE

THE PURPOSE OF THIS SURVEY WAS TO ESTABLISH THE PROPERTY LINE ON THE NORTH BOUNDARY OF SECTION 26 T. 32 S., R. 7 W., IN DOUGLAS COUNTY, OREGON. THE PROPERTY LINE WAS BLAZED, PAINTED, AND MARKED WITH 6" STEEL FENCE POSTS.

THE BASIS OF BEARING IS THE SECTION LINE BETWEEN THE N 1/4 CORNER OF SECTION 26 AND THE NORTHWEST CORNER OF SECTION 26, T. 32 S., R. 7 W., W. M. AS SURVEYED BY W. H. BYARS IN 1881.

THE NORTHWEST SECTION CORNER WAS FOUND AS SET BY N. PRICE (CS41/373, R-11), AND RENEWED BY THE COUNTY SURVEYOR IN 1968(CS54/36). THE NORTHEAST SECTION CORNER WAS FOUND AS RENEWED BY THE COUNTY SURVEYOR IN 1970(CS54/36). THE STONE FOR THE N 1/4 OF SECTION 26 WAS FOUND ALONG WITH A METAL TAG ON A FIR SET BY THE ROBERT DOLLAR SURVEY CREW IN 1957. THE STONE WAS FIRMLY SET IN THE GROUND UNDER A STONE MOUND. THE STONE WAS MARKED 1/4 ON THE NORTH SIDE AND WAS AT THE RECORD DISTANCE FROM THE TWO RIDGE CALLS AND THE CALL TO THE DRY RAVINE. I TALKED WITH WALLACE OWEN, LS 424, WHOSE INTIALS WERE ON THE TAG, AND CONFIRMED THAT THE ROBERT DOLLAR SURVEY CREW WOULD NOT HAVE SET A STONE MONUMENT, BUT ONLY WOULD HAVE REFERENCED AN ORIGINAL CORNER STONE.

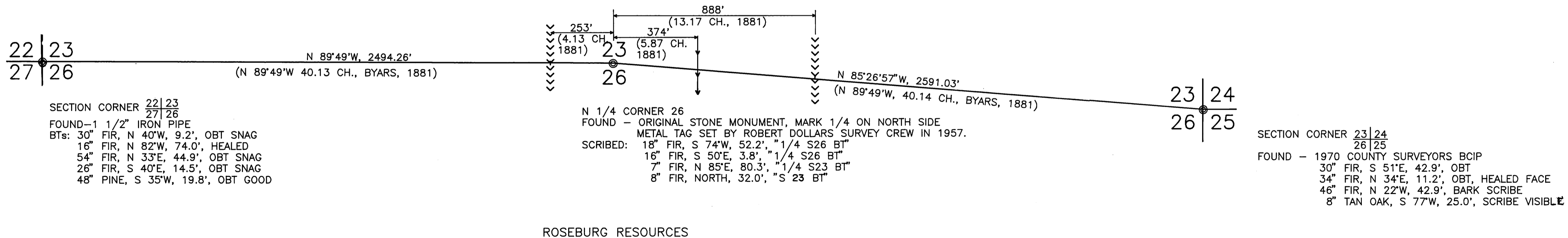
THIS SURVEY WAS PERFORMED IN APRIL 1993 USING A TOPCON GTS-302 TOTAL STATION TO RUN A CLOSED LOOP TRAVERSE.

REGISTERED  
PROFESSIONAL  
LAND SURVEYOR

*Mark F. Smalley*  
OREGON  
JULY 26, 1988  
MARK F. SMALLEY  
2354

EXPIRES 12/31/94

BUREAU OF LAND MANAGEMENT



SECTION CORNER  $\frac{22}{27}$  |  $\frac{23}{26}$   
FOUND - 1 1/2" IRON PIPE  
BTs: 30" FIR, N 40°W, 9.2', OBT SNAG  
16" FIR, N 82°W, 74.0', HEALED  
54" FIR, N 33°E, 44.9', OBT SNAG  
26" FIR, S 40°E, 14.5', OBT SNAG  
48" PINE, S 35°W, 19.8', OBT GOOD

N 1/4 CORNER 26  
FOUND - ORIGINAL STONE MONUMENT, MARK 1/4 ON NORTH SIDE  
METAL TAG SET BY ROBERT DOLLARS SURVEY CREW IN 1957.  
SCRIBED: 18" FIR, S 74°W, 52.2', "1/4 S26 BT"  
16" FIR, S 50°E, 3.8', "1/4 S26 BT"  
7" FIR, N 85°E, 80.3', "1/4 S23 BT"  
8" FIR, NORTH, 32.0', "S 23 BT"

SECTION CORNER  $\frac{23}{26}$  |  $\frac{24}{25}$   
FOUND - 1970 COUNTY SURVEYORS BCIP  
30" FIR, S 51°E, 42.9', OBT  
34" FIR, N 34°E, 11.2', OBT, HEALED FACE  
46" FIR, N 22°W, 42.9', BARK SCRIBE  
8" TAN OAK, S 77°W, 25.0', SCRIBE VISIBLE

COUNTY SURVEYORS FILE DATA  
DO NOT REMOVE FROM OFFICE

MAP FILE M117-43