

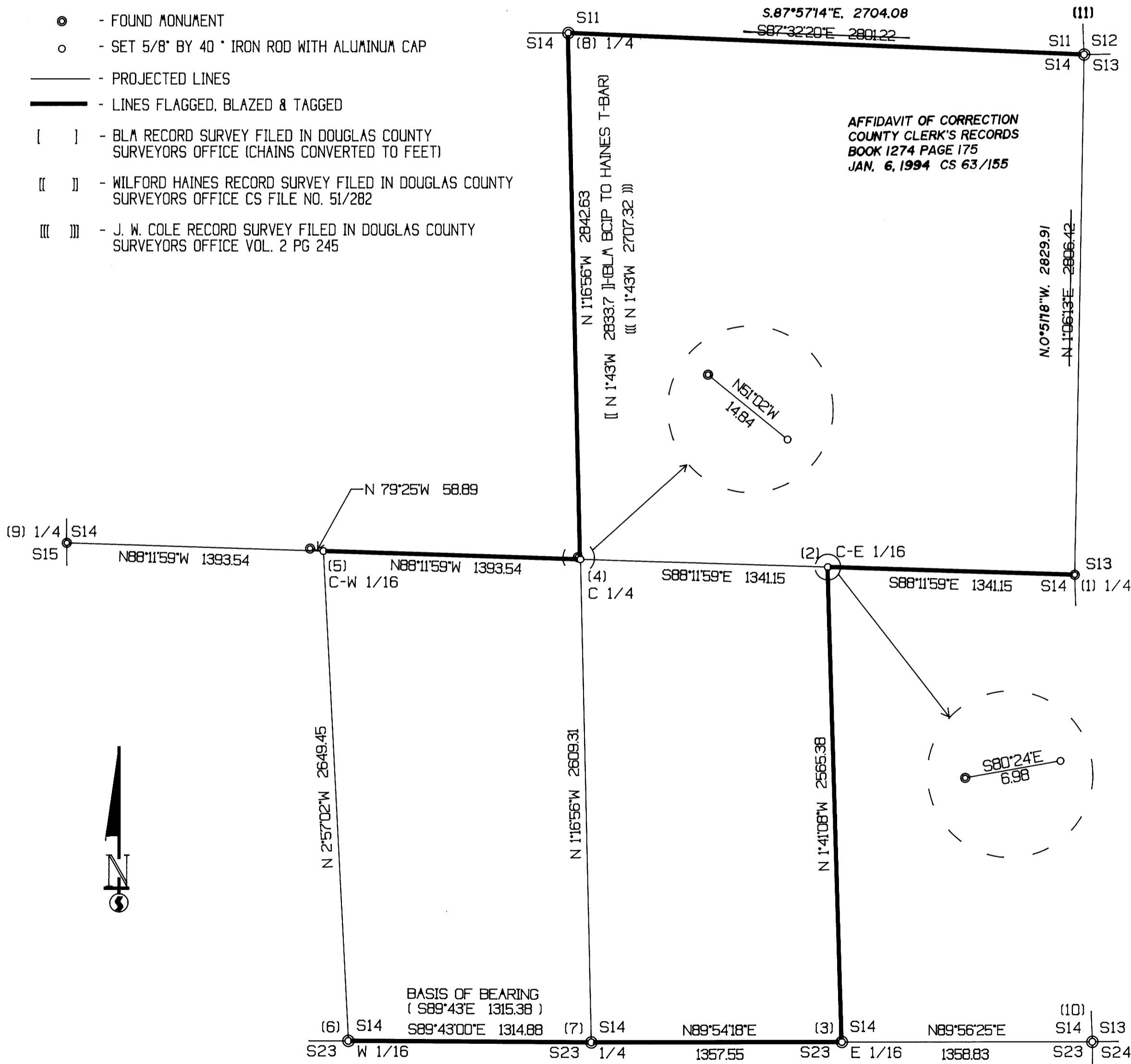
# LONE ROCK TIMBER CO.

PO BOX 1127 ROSEBURG, OREGON 97470 JUNIPER PROPERTIES LIMITED PARTNERSHIP  
SECTION 14, TOWNSHIP 22 SOUTH, RANGE 7 WEST, W.A. DOUGLAS COUNTY, OREGON  
ELK CREEK TUNNEL SURVEY SCALE: 1" = 400' DATE: APRIL 1993

REGISTERED  
PROFESSIONAL  
LAND SURVEYOR  
*Ken W. Hoffine*  
OREGON  
JULY 16, 1987  
KEN W. HOFFINE  
2281  
EXPIRES 12-31-93

**LEGEND:**

- - FOUND MONUMENT
- - SET 5/8" BY 40" IRON ROD WITH ALUMINUM CAP
- - PROJECTED LINES
- - LINES FLAGGED, BLAZED & TAGGED
- [ ] - BLA RECORD SURVEY FILED IN DOUGLAS COUNTY SURVEYORS OFFICE (CHAINS CONVERTED TO FEET)
- [ ] - WILFORD HAINES RECORD SURVEY FILED IN DOUGLAS COUNTY SURVEYORS OFFICE CS FILE NO. 51/282
- [ ] - J. W. COLE RECORD SURVEY FILED IN DOUGLAS COUNTY SURVEYORS OFFICE VOL. 2 PG 245



**NARRATIVE**

THIS SURVEY WAS CONDUCTED TO ESTABLISH PROPERTY LINES FOR TIMBER CUTTING PURPOSES. THIS SURVEY IS DEPENDENT UPON BLA AND HAINES READJUSTMENT OF ORIGINAL CORNERS AS DESCRIBED IN CORNER NOTES AND A BLA SURVEY BETWEEN THE S 1/4 AND SW 1/4 OF SECTION 14 SETTING THE W 1/16 AT PROPORTIONATE DISTANCE. WE INITIATED THIS SURVEY AT A BLA BCIP FOR THE W 1/16 BETWEEN SECTIONS 14 AND 23 TRAVERSING EAST TO A BLA BCIP AT THE S 1/4 OF SECTION 14. CONTINUING EAST TO HAINES T-BARS AT THE E 1/16 AND THE SECC. FROM THE E 1/16 WE TRAVESED NORTH SETTING THE CE 1/16 OF SECTION 14 FROM WHICH HAINES ADJUSTMENT OF COLES 1915 SURVEY BEARS S80°24'E, 6.98 FEET, CONTINUING EAST TO A BLA BCIP AT THE EAST 1/4 OF SECTION 14, THEN NORTH TO A HAINES T-BAR SET BY ORIGINAL FIELD TOPOGRAPHY CALLS FROM THE NE SECTION CORNER OF SECTION 14. WE THEN CONTINUED WEST TO A BLA BCIP FOR THE N 1/4 OF SECTION 14 THEN SOUTH SETTING THE CENTER 1/4 OF SECTION 14 FROM WHICH HAINES ADJUSTMENT OF COLES 1915 SURVEY BEARS N51°02'W, 14.84 FEET. WE THEN CONTINUED WEST SETTING THE CENTER WEST 1/16 OF SECTION 14 FROM WHICH AN 1/2" IRON BOLT SET TO ADJUNCT COLES 1915 SURVEY CENTER WEST 1/16 POSITION BEARS N79°25'W, 59.89 FEET. WE THEN TRAVESED SOUTH TO CLOSE OUR TRAVERSE BACK AT THE WEST 1/16 BETWEEN SECTIONS 14 AND 23. FROM A TRAVERSE POINT NEAR THE NESC OF SECTION 14 WE WERE ABLE TO SEE AND TIE IN TO THE W 1/4 OF SECTION 14 WHICH IS A BLA BCIP JUST ABOVE THE ELK CREEK TUNNEL. WE MARKED TRUE LINES BETWEEN CORNERS AS SHOWN ON THIS MAP. SURVEY WAS DONE WITH A LEITZ SET 2 TOTAL STATION WITH GARY ANGIOLETT AND PAT KELLY ASSISTING ME.

**CORNER INFORMATION**

- (1) E 1/4 CORNER SECTION 14  
FOUND A DOUGLAS COUNTY BRASS CAP 0.6 FEET ABOVE GROUND  
-- 24" CEDAR BEARS N78°E, 29.8 FEET WELL HEALED SCAR AND BLA TAG  
-- 44" DOUGLAS FIR STUAP BEARS N10°E, 41.5 FEET (RECORD N11°E, 41.3 FEET)  
-- WELL HEALED SCAR CUT THRU. BLA TAG  
-- 38" DOUGLAS FIR BEARS N43°W, 125.0 FEET (RECORD N42°W, 124.70 FEET) WELL HEALED SCAR HAINES TAG  
-- REMNANTS OF OLD CEDAR STUAP BEARS N1°E, 17.2 FEET, NO MARKS  
-- 60" OLD DECAYING DOUGLAS FIR STUAP BEARS N5°E, 93.7 FEET, NO MARKS  
-- 11" DOUGLAS FIR BEARS N49°E, 12.0 FEET, 1 TAG AND BLAZE  
-- HAINES T-IRON BEARS 0.25 FEET NORTH  
CORNER LIES ON A VERY FLAT BENCH BETWEEN BRUSH CREEK 2.5 CHAINS WEST AND BRUSH CREEK ROAD 5.5 CHAINS EAST.
- (2) CE 1/16 CORNER SECTION 14  
SET 5/8" X 40" IRON ROD WITH 2 1/2" ALUMINUM CAP ON TOP, MARKED LONE ROCK TIMBER T225 R7W CW 1/16 S14 1993 PLS2291  
-- 14" DOUGLAS FIR BEARS S22°E, 16.94 FEET, 1 SCRIBE CE 1/16 S14 B.T., 1 TAG  
-- 32" DOUGLAS FIR BEARS N77 1/4°W, 32.97 FEET, 1 SCRIBE CE 1/16 S14, B.T., 1 TAG  
-- T-IRON BY HAINES FOR COLES 1915 SURVEY VOL. 2, PAGE 245 BEARS S80°24'E 6.97'  
CORNER LIES ON EXTREMELY STEEP NORTHWEST SLOPE APPROXIMATELY 110 FEET WEST OF ROCK RIDGE TOP THAT FALL OFF STEEP TO THE EAST.
- (3) EAST 1/16 CORNER BETWEEN SECTION 14 AND SECTION 23  
FOUND HAINES T-IRON 0.6 FEET ABOVE GROUND  
-- 28" DOUGLAS FIR BEARS S40°E, 11.4 FEET, 1 TAGGED TREE IN 1992  
-- 85" INCENSE CEDAR SNAG BEARS N49°W, 89.0 FEET, GROWN OVER SCRIBING VISIBLE, 1 TAG  
-- 50" DOUGLAS FIR BEARS S17°E, 89.0 FEET, WELL HEALED SCAR AND HAINES TAG  
CORNER LIES ON ADGEST WEST FACING SLOPE. SLOPE IS BENCHY AND BROKEN AND COVERED WITH 30 YEAR OLD TIABER.
- (4) CENTER 1/4 CORNER SECTION 14  
SET A 5/8" X 40" IRON ROD WITH 2 1/2" ALUMINUM CAP ON TOP MARKED LONE ROCK TIMBER T225 R7W C 1/4 S 14 B.T. AND TAG  
-- 4" DOUGLAS FIR BEARS S20°E, 4.81 FEET, 1 SCRIBE C 1/4 S14 B.T. AND TAG  
-- 4" DOUGLAS FIR BEARS S34 1/2°W, 31.30 FEET, 1 SCRIBE C 1/4 S14 B.T. AND TAG  
-- 44" OAK BEARS N59 1/2°W, 33.18 FEET, 1 SCRIBE C 1/4 S14 B.T. AND TAG.  
(THIS OAK TREE IS ALSO BEARING TREE FOR HAINES T-IRON)  
-- 4" DOUGLAS FIR BEARS N14°E, 34.00 FEET, 1 SCRIBE C 1/4 S14 B.T., AND TAG  
-- T-IRON BY HAINES FOR COLES 1915 SURVEY VOL. 2, PAGE 245 BEARS N51°02'W, 14.84 FEET  
CORNER LIES ON GENTLE SLOPE WITH 3' TO 4' DBH REPROD TO SOUTH AND NORTHEAST. GRASS FIELD TO NORTHWEST.
- (5) CENTER WEST 1/16 CORNER SECTION 14  
SET 5/8" X 40" IRON ROD WITH 2 1/2" ALUMINUM CAP ON TOP MARKED LONE ROCK TIMBER T225 R7W C-C W 1/16 S14 1993 PLS 2291  
-- 14" DOUGLAS FIR BEARS S22°E, 16.94 FEET, 1 SCRIBE SW 1/16 S14 B.T. AND TAG  
-- 20" DOUGLAS FIR BEARS S21°E, 17 1/4°W, 32.97 FEET, 1 SCRIBE SW 1/16 S14 B.T. AND TAG  
-- IRON BOLT FROM COLES 1915 SURVEY VOL. 2, PAGE 245 BEARS N79°25'W, 59.89 FEET  
CORNER LIES ON A STEEP NORTH FACING SLOPE ON TOP OF A WIDE SPUR RIDGE. OLD COUNTY ROAD BEARS EAST APPROXIMATELY 300 FEET.
- (6) WEST 1/16 CORNER BETWEEN SECTION 14 AND SECTION 23  
FOUND BLA BRASS CAP 0.5 FEET ABOVE GROUND  
-- 20" DOUGLAS FIR BEARS S21°W, 80.0 FEET, WELL HEALED SCAR AND 2 BLA TAGS  
-- 27" CEDAR BEARS N5 1/2°E, 29.9 FEET, NO MARKS VISIBLE, BLA TAG  
CORNER LIES ON VERY FLAT BENCH WITH FENCE LINE BEARING N3°W AND SOUTH.
- (7) SOUTH 1/4 CORNER SECTION 14  
FOUND BLA BRASS CAP IN GOOD CONDITION WITH HAINES T-IRON ALONG SIDE  
-- 10" DOUGLAS FIR BEARS N43°W, 5.1 FEET, WELL HEALED SCAR AND BLA TAG  
-- 58" DOUGLAS FIR BEARS N33°E, 54.2 (RECORD N31°E, 54.78 FEET) WELL HEALED SCAR, BLA TAG  
-- BLACK OAK SNAG BEARS S41 3/4°E, 99.0 FEET  
-- FOUND STUAP HOLE AT S40°E, 31.7 FEET AS CALLED IN 1965 BLA NOTES  
CORNER IS ON THE EDGE OF A WESTERLY SLOPE APPROXIMATELY 1 CHAIN WEST OF SMALL RIDGE AND 2 CHAINS EAST OF DRAW.
- (8) N 1/4 CORNER SECTION 14  
FOUND BLA BRASS CAP 0.3 FEET ABOVE GROUND WITH HAINES T-IRON ALONG SIDE  
-- 30" DOUGLAS FIR S42°W, 16.5 FEET (TAG SAYS 16.9) VERY WELL HEALED SCAR, WITH HAINES AND BLA TAGS  
-- 29" DOUGLAS FIR BEARS N7°W, 28.0 FEET VERY WELL HEALED SCAR, WITH HAINES AND BLA TAG  
-- 25" DOUGLAS FIR BEARS N10°E, 42.8 FEET (RECORD 42.24)  
-- 18" DOUGLAS FIR BEARS S3°W, 42.3 FEET (RECORD 41.91)  
CORNER LIES ON TOP OF FLAT RIDGE IN NICE STAND OF YOUNG TIABER VERY LITTLE UNDERBRUSH.
- (9) W 1/4 CORNER SECTION 14  
FOUND BLA BRASS CAP 0.3 FEET ABOVE GROUND. CORNER APPEARS TO HAVE SLID APPROX. 0.4 FEET N15°E  
-- 7 1/2" DOUGLAS FIR BEARS S73°E, 10.45 FEET (RECORD S73 1/2°E, 10.13 FEET) HEALED BLAZE AND OREGON STATE PARKS B.T. TAG  
-- 15" DOUGLAS FIR BEARS N28°W, 19.95 FEET (RECORD N27 1/2°W, 20.5 FEET) HEALED FACE BLA AND OREGON STATE PARKS B.T. TAG  
-- 30" VERY DECAYED FIR STUAP BEARS N40°W, 32.5 FEET (RECORD N40°W, 33.0 FEET) NO MARKS VISIBLE  
CORNER LIES ON A VERY STEEP NORTHEAST SLOPE, ABOVE AND BELOW TALL ROCK BLUFFS. ALSO APPROX. S40°W, 60.0 FEET FROM THE SOUTHWEST CORNER OF THE ELK CREEK BRIDGE NEAR THE TUNNEL ENTRANCE.
- (10) SOUTHEAST SECTION CORNER SECTION 14  
FOUND HAINES T-IRON SET FROM ORIGINAL EVIDENCE  
-- 85" DOUGLAS FIR BEARS N48°E, 9.25 FEET WITH POSSIBLE ORIGINAL BARK SCRIBE MARKS OF A 'B' AND A 'T' WITH NEWER SCRIBING BY LEO MARTIN IN CHOPPED BARK. HAINES B.T. TAG AND I ALSO TAG  
-- 23" DOUGLAS FIR BEARS S18°E, 12.6 FEET (TAG SAYS S15°E, 12.5 FEET) WELL HEALED SCAR WITH B.T. TAG  
-- 15" DOUGLAS FIR BEARS N80°E, 24.1 FEET (TAG SAYS N78°W, 24.1 FEET) WELL HEALED SCAR AND BLA TAG  
-- 21" DOUGLAS FIR BEARS S73°W, 18.0 FEET (TAG SAYS S75°W, 18.0 FEET) WELL HEALED SCAR AND BLA TAG  
CORNER SITS ON STEEP SOUTHEAST SLOPE AT BASE OF A 4.0 FOOT TALL ROCK HEAD WALL APPROXIMATELY 8 CHAINS EAST OF MAIN RIDGE.
- (11) NORTHEAST SECTION CORNER SECTION 14  
FOUND HAINES T-IRON 1.0 FEET ABOVE GROUND SET FROM ORIGINAL TOPOG CALLS AS SHOWN ON MAP #A3-22  
-- 28" ALDER BEARS S70°W, 11.0 FEET WITH BLA TAG  
-- 20" WHITE FIR STUAP BEARS N74°E, 22.2 FEET, HEALED FACE WITH HAINES NAIL AND TAG.  
-- 11" DOUGLAS FIR STUAP BEARS S21°E, 23.8 FEET, WELL HEALED SCAR  
-- 22" DOUGLAS FIR STUAP BEARS S31°W, 30.9 FEET, WELL HEALED SCAR  
CORNER LIES APPROX. 120 FEET NORTH OF DIRT ROAD. ELK CREEK BEARS NORTH APPROX 115 FEET AND THE PROPERTY SOUTH OF THIS CORNER HAS BEEN CLEARCUT.