

# SURVEY FOR WEYERHAEUSER CO.

IN  
S 1/2, SECTION 26, T. 24 S., R. 3 W., W.M.  
DOUGLAS COUNTY, OREGON

SCALE: 1" = 500'

JULY 10, 1993

MAP & TAX LOT: 24 3 100




## NARRATIVE

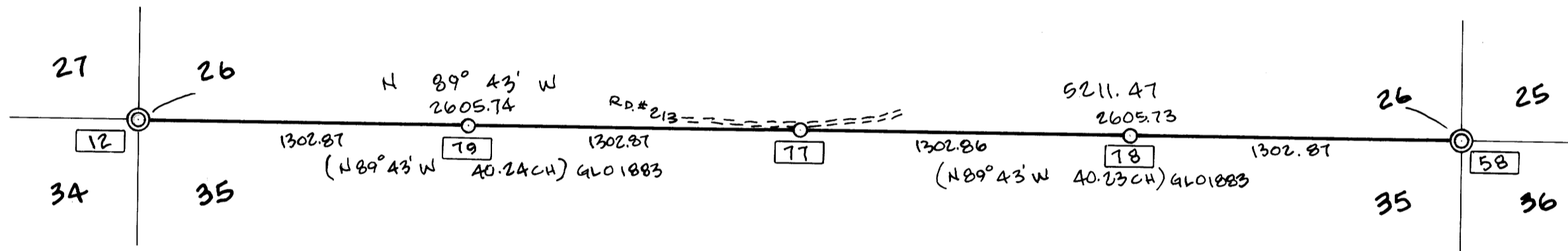
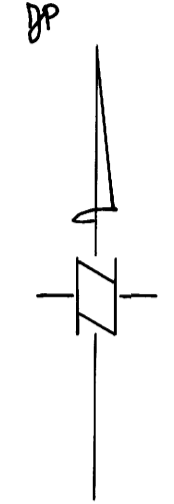
THIS SURVEY WAS PERFORMED AT THE REQUEST OF OF THE WEYERHAEUSER CO. TO MONUMENT AND MARK THE SECTION LINE AS SHOWN. THE S.W. AND SE. CORNERS OF SECTION 26 WERE TIED IN A CLOSED TRAVERSE SCHEME. A SEARCH AREA WAS THEN DETERMINED FOR THE SOUTH 1/4 OF SECTION 26. AFTER A DILIGENT SEARCH FOR ANY ORIGINAL CORNER EVIDENCE, WITH NO SUCCESS, I DECIDED TO PROPORTION THIS CORNER. THE PROPORTIONED POINT FELL ABOUT 15 FEET SOUTH OF THE EDGE OF ROAD 213. IT IS VERY LIKELY THAT THE CORNER MONUMENT AND ACCESSORIES WERE DESTROYED BY ROAD CONSTRUCTION.

I FOUND AN OLD TALL D. FIR STUMP ABOUT 50 FEET EAST OF OUR PROPORTIONED POINT THAT HAD OLD BLAZES ON THE EAST AND WEST SIDES. I ASSUME THESE BLAZES WERE MADE IN THE LATE 1940'S TO MARK THE PROPERTY LINE PRIOR TO LOGGING, AND NOT MADE IN THE ORIGINAL SURVEY. THEY DO INDICATE WE WERE IN THE CORRECT AREA TO MAKE OUR CORNER SEARCH.

THE BASIS OF BEARING FOR THIS SURVEY IS THE RECORD 1883 GLO BEARING BETWEEN CORNERS 12 & 58 AS BEING N 89° 43' W AS SHOWN.

## LEGEND

- FOUND MONUMENT AS DESCRIBED . . . . . 
- SET MONUMENT AS DESCRIBED . . . . . 
- LINE BLAZED AND PAINTED AND MARKED WITH ORANGE GLO FLAGGING . . . . . 
- RECORD DATA . . . . . ( )
- CORNER NUMBER . . . . . 79



**REGISTERED  
PROFESSIONAL  
LAND SURVEYOR**

*Steven P. Ness*

**OREGON**  
JULY 14, 1967  
**STEVEN P. NESS**  
811  
TO BE RENEWED  
12-31-94

LEANITT, NESS & CO.  
P.O. BOX 298  
SPRINGFIELD, OR  
97417-0058  
(503) 747-6879

## CORNER INFORMATION

### 12 SW CORNER SECTION 26



FD: 1 1/2" IRON PIPE (I CEMENTED A 2 1/2" BRASS CAP TO TOP.)  
BT'S FD:

- 56" D. FIR STUMP, N 37° 38' E 18.5 TO CENTER, NO "W" NAIL FOUND WEYCO BT TAG ON STUMP. (N 46° E 15.8)
- 38" D. FIR SNAG 15" TALL, S 63° 3' W 31.4 TO CENTER, 29.87 TO "W" NAIL. (S 66° W 30.3)
- 57" D. FIR STUMP, N 52° 36' W 39.5 TO CENTER, 37.23 TO "W" NAIL (N 27° W 37.4)

BT'S MARKED:

- 9" D. FIR, N 41° 0' E 29.3 TO CENTER, COULD NOT MEASURE TO "W" NAIL SCRIBED "T 24 S R 3 W S 26 BT."
- 15" D. FIR, S 30° 27' E 29.4 TO CENTER, 28.54 TO "W" NAIL, SCRIBED "T 24 S R 3 W S 35 BT."
- 10" D. FIR, S 34° 52' W 20.4 TO CENTER, 19.89 TO "W" NAIL, SCRIBED "T 24 S R 3 W S 34 BT."
- 14" D. FIR, N 26° 42' W 14.7 TO CENTER, 14.14 TO "W" NAIL, SCRIBED "T 24 S R 3 W S 27 BT."

### 58 SE CORNER SECTION 26



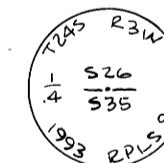
FD: 1 1/2" IRON PIPE (I CEMENTED A 2 1/2" BRASS CAP TO TOP.)  
BT'S FD:

- 30" D. FIR STUMP, N 88° 55' E 19.5 TO CENTER, 18.02 TO "W" NAIL. (N 60° E 18.3)
- 38" D. FIR STUMP, S 28° 10' E 8.3 TO CENTER, NO MEASURE TO "W" NAIL. (S 34° E 6.5)
- 48" D. FIR STUMP, S 52° 10' W 61.6 TO CENTER, 60.68 TO "W" NAIL. (NO RECORD OF THIS STUMP ON WEYCO REPORT)
- 42" D. FIR STUMP, N 44° 15' W 9.1 TO CENTER, 74.2 TO "W" NAIL (N 40° W 7.2)

BT'S MARKED:

- 15" D. FIR, N 36° 17' E 27.1 TO CENTER, 26.27 TO "W" NAIL, SCRIBED "T 24 S R 3 W S 25 BT."
- 14" D. FIR, S 48° 26' E 28.3 TO CENTER, 27.36 TO "W" NAIL, SCRIBED "T 24 S R 3 W S 36 BT."
- 16" D. FIR, S 49° 45' W 23.9 TO CENTER, 23.13 TO "W" NAIL, SCRIBED "T 24 S R 3 W S 35 BT."
- 16" D. FIR, N 26° 14' W 40.2 TO CENTER, 39.29 TO "W" NAIL, SCRIBED "T 24 S R 3 W S 26 BT."

### 77 SOUTH 1/4 CORNER SECTION 26

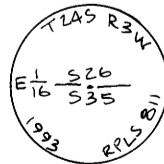


FD: NO TRACE OF 1883 GLO MONUMENT OR ACCESSORIES  
SET: 2" X 36" IRON PIPE WITH 2 1/2" BRASS CAP CEMENTED TO TOP AT PROPORTIONED POINT.

BT'S MARKED:

- 14" D. FIR, N 24° 06' E 44.9 TO CENTER, 44.19 TO "W" NAIL, SCRIBED "1/4 S 26 BT"
- 13" D. FIR, S 50° 21' E 23.2 TO CENTER, 22.70 TO "W" NAIL, SCRIBED "1/4 S 35 BT"
- 14" D. FIR, S 33° 09' W 13.2 TO CENTER, 12.47 TO "W" NAIL, SCRIBED "1/4 S 35 BT"
- 11" D. FIR, N 36° 52' W 48.9 TO CENTER, 48.57 TO "W" NAIL, SCRIBED "1/4 S 26 BT"

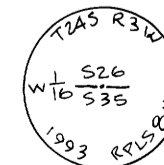
### 78 EAST 1/16 CORNER SECTIONS 26 & 35



SET: 2" X 36" IRON PIPE WITH 2 1/2" BRASS CAP CEMENTED TO TOP.  
BT'S MARKED:

- 10" D. FIR, S 64° 25' E 4.7 TO CENTER, 4.18 TO "W" NAIL, SCRIBED "E 1/16 S 35 BT"
- 11" D. FIR, S 54° 01' W 48 TO CENTER, 61.5 TO "W" NAIL, SCRIBED "E 1/16 S 35 BT"

### 79 WEST 1/16 CORNER SECTIONS 26 & 35



SET: 2" X 39" IRON PIPE WITH 2 1/2" BRASS CAP CEMENTED TO TOP.  
BT'S MARKED:

- 16" D. FIR, S 41° 00' E 11.1 TO CENTER, 10.20 TO "W" NAIL, SCRIBED "W 1/16 S 35 BT"
- 13" D. FIR, S 39° 21' W 28.4 TO CENTER, 27.81 TO "W" NAIL, SCRIBED "W 1/16 S 35 BT"

**COUNTY SURVEYORS FILE DATA  
DO NOT REMOVE FROM OFFICE**