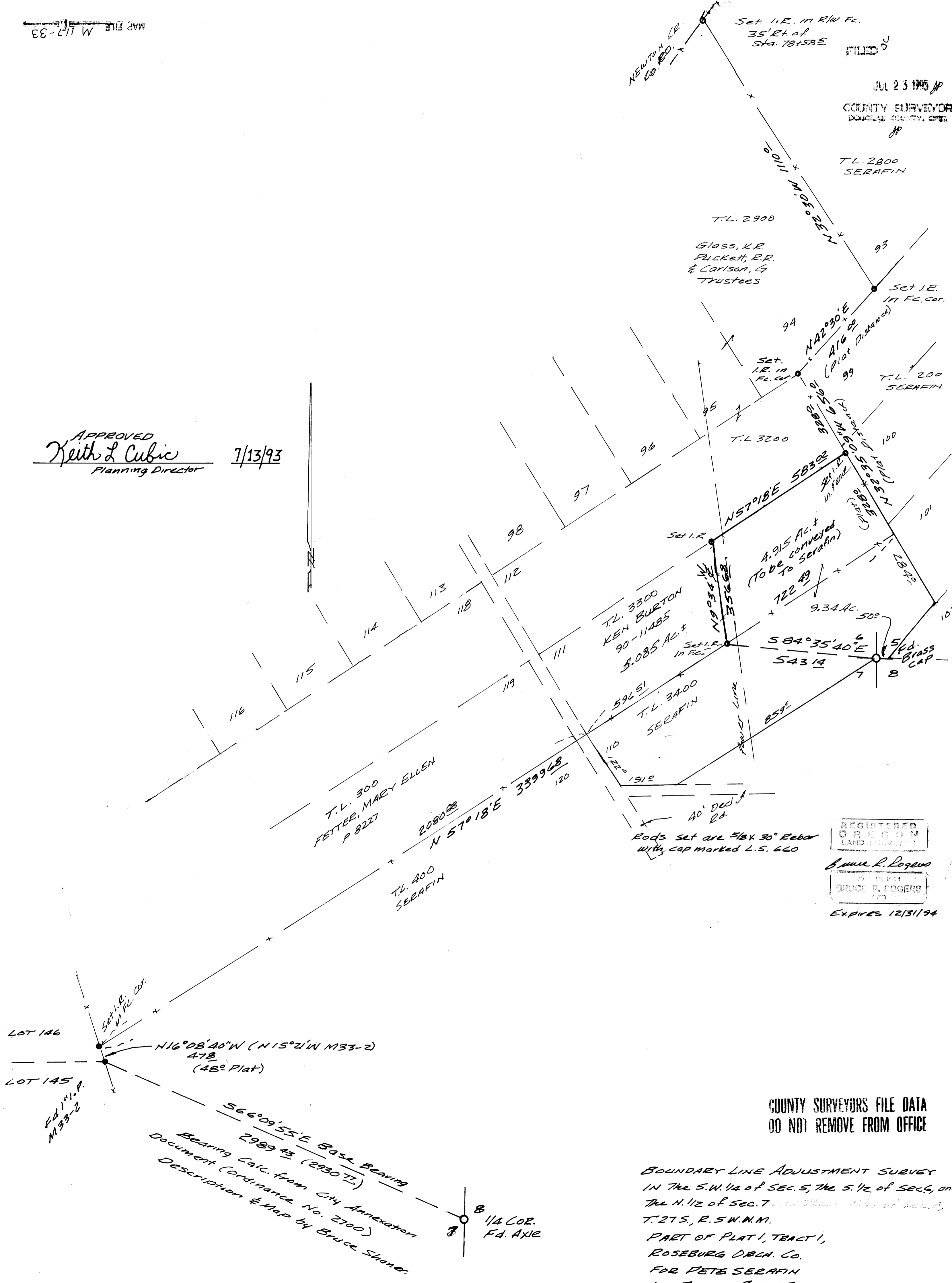


Set 1.R. in R/W Fl. 35' Rt. of Sta. 78+58E
JUL 23 1993 JP
COUNTY SURVEYOR
DOUGLAS COUNTY, OREG.
T.L. 2800 SERAFIN

APPROVED
Keith L Cubic
Planning Director
7/13/93



REGISTERED
OREGON
LAND SURVEYOR
Bruce R. Rogers
JUL 15 1994
BRUCE R. ROGERS
L.S.
Expires 12/31/94

COUNTY SURVEYORS FILE DATA
DO NOT REMOVE FROM OFFICE

BOUNDARY LINE ADJUSTMENT SURVEY
IN THE S.W. 1/4 OF SEC. 5, THE S. 1/2 OF SEC. 6, AND
THE N. 1/2 OF SEC. 7 AND THE S.W. 1/4 OF SEC. 8,
T. 27 S., R. 5 W. N.M.
PART OF PLAT 1, TRACT 1,
ROSEBURG ORCH. CO.
FOR PETE SERAFIN
BY BRUCE ROGERS
443 W. UMPQUA, ROSEBURG
JUNE, 1993 1" = 200'

566°09'55"E Base Bearing
2989.43 (2930 TL)
Bearing Calc. from City Annexation
Document (Ordinance No. 2700)
Description & Map by Bruce Shanon.