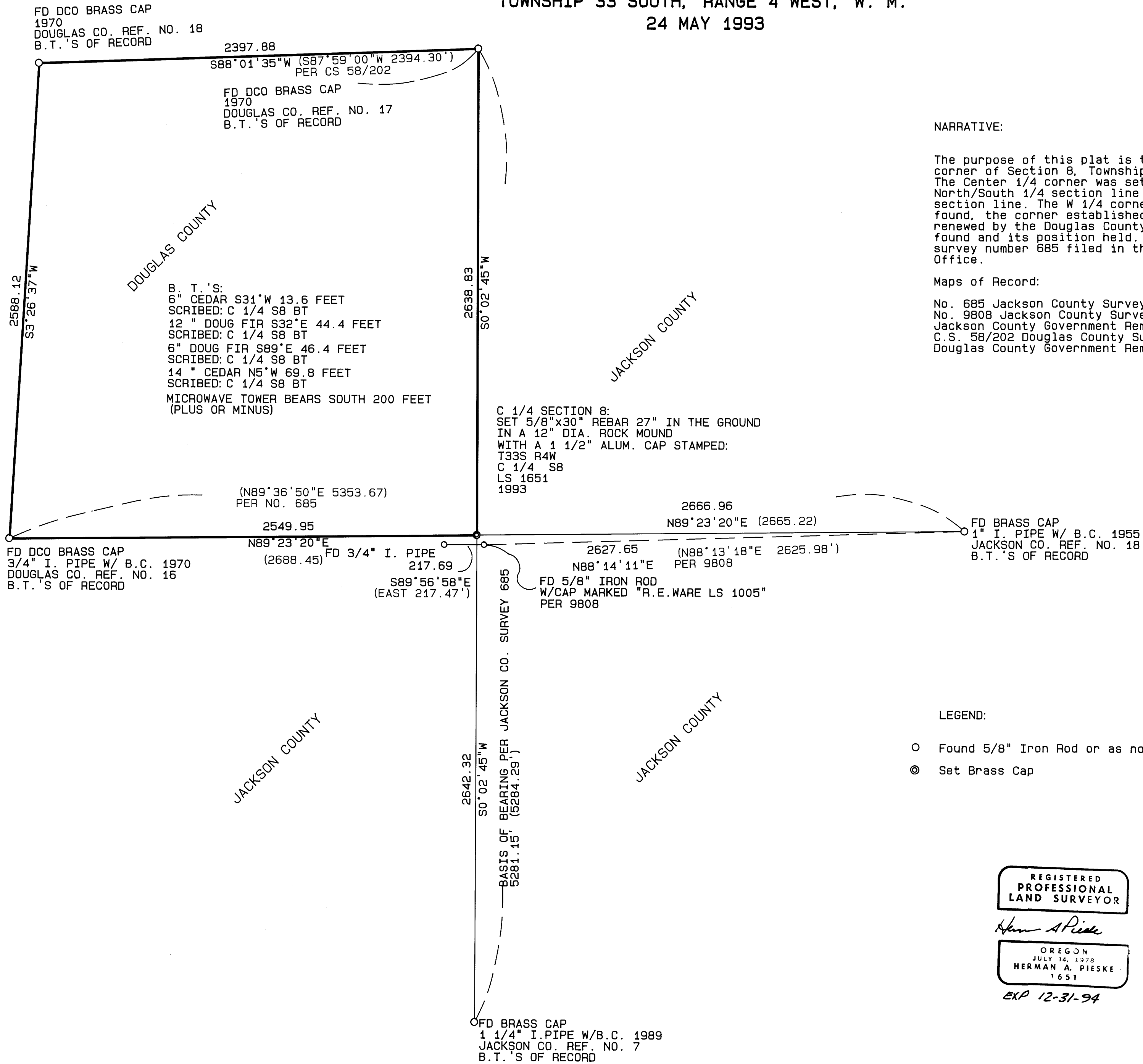


BOUNDARY SURVEY FOR EDWARD LONG

LYING IN THE NORTHWEST CORNER OF SECTION 8,
TOWNSHIP 33 SOUTH, RANGE 4 WEST, W. M.
24 MAY 1993



NARRATIVE:

The purpose of this plat is to show boundary of the Northwest corner of Section 8, Township 33 South, Range 4 West, W.M. The Center 1/4 corner was set by the intersection of the North/South 1/4 section line with the East/West 1/4 section line. The W 1/4 corner of survey no. 685 was not found, the corner established by survey C.S. 42/79, 1955 and renewed by the Douglas County Surveyor's Office in 1970 was found and its position held. The Basis of Bearing was survey number 685 filed in the Jackson County Surveyor's Office.

Maps of Record:

No. 685 Jackson County Surveyor's Office.
No. 9808 Jackson County Surveyor's Office.
Jackson County Government Remonumentation Notes.
C.S. 58/202 Douglas County Surveyor's Office.
Douglas County Government Remonumentation Notes.

LEGEND:

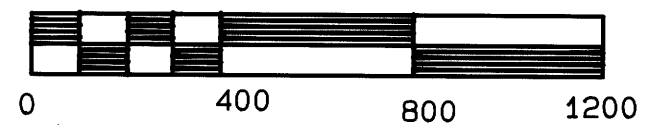
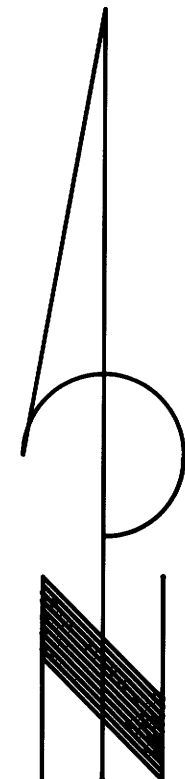
- Found 5/8" Iron Rod or as noted.
- ⊙ Set Brass Cap

REGISTERED
PROFESSIONAL
LAND SURVEYOR

Herman A. Pieske

OREGON
JULY 14, 1978
HERMAN A. PIESKE
1651

EXP 12-31-94



SCALE: 1 inch : 400 feet

MAP FILE M117 - 13

MAP FILE M117 - 13