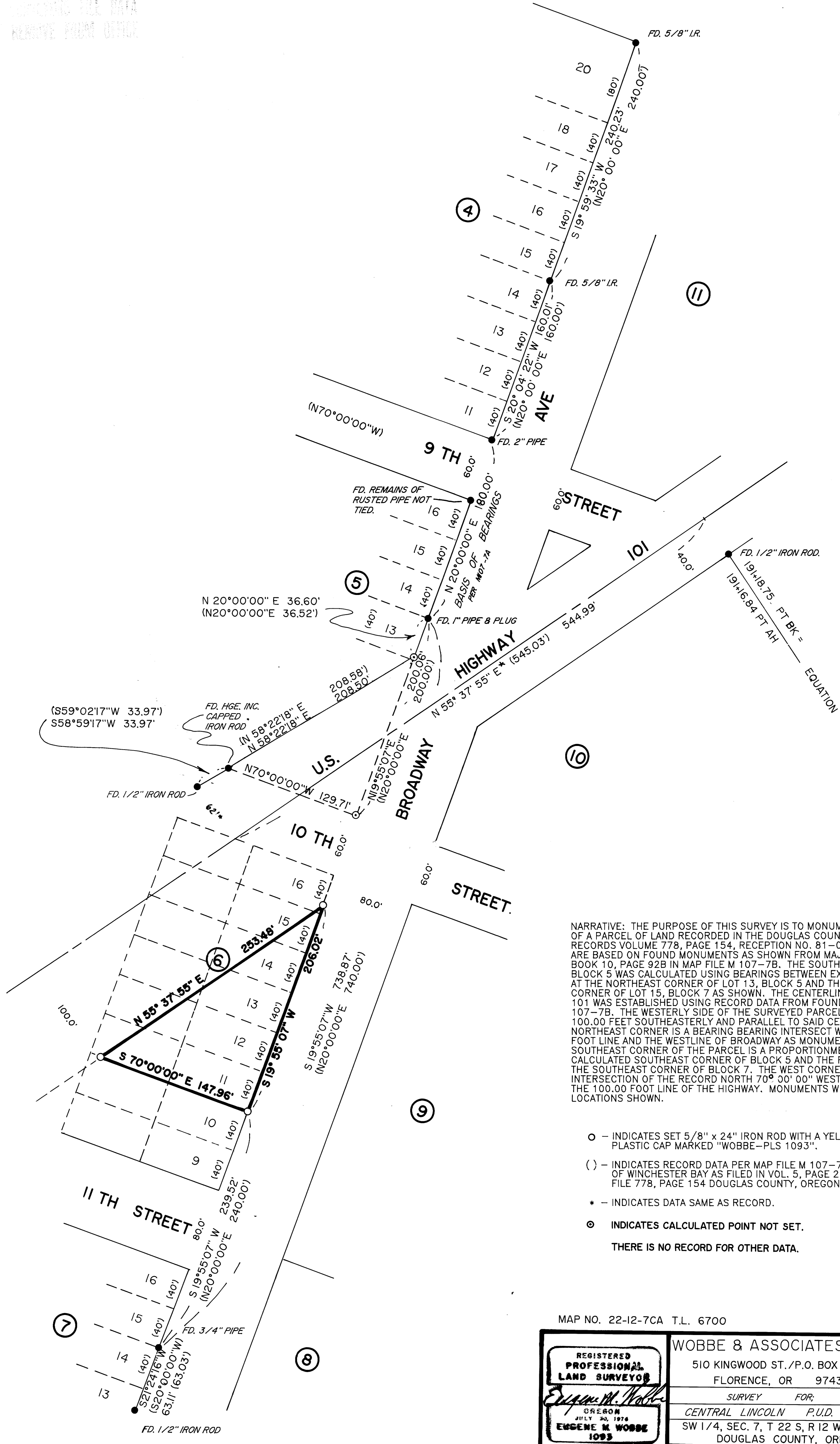


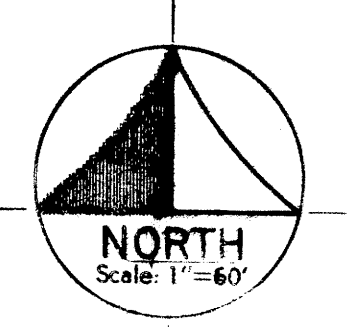
PLANNING FILE DATA
PLANNING DEPARTMENT OFFICE

FILED
MAY 20 1993
CITY SURVEYOR
DOUGLAS COUNTY, OREGON
JC



NARRATIVE: THE PURPOSE OF THIS SURVEY IS TO MONUMENT THE CORNERS OF A PARCEL OF LAND RECORDED IN THE DOUGLAS COUNTY OFFICIAL RECORDS VOLUME 778, PAGE 154, RECEPTION NO. 81-00585. BEARINGS ARE BASED ON FOUND MONUMENTS AS SHOWN FROM MAJOR LAND PARTITION BOOK 10, PAGE 92B IN MAP FILE M 107-7B. THE SOUTHEAST CORNER OF BLOCK 5 WAS CALCULATED USING BEARINGS BETWEEN EXISTING MONUMENTS AT THE NORTHEAST CORNER OF LOT 13, BLOCK 5 AND THE SOUTHEAST CORNER OF LOT 15, BLOCK 7 AS SHOWN. THE CENTERLINE OF HIGHWAY 101 WAS ESTABLISHED USING RECORD DATA FROM FOUND MONUMENTS AND M 107-7B. THE WESTERLY SIDE OF THE SURVEYED PARCEL IS A LINE 100.00 FEET SOUTHEASTERLY AND PARALLEL TO SAID CENTERLINE. THE NORTHEAST CORNER IS A BEARING BEARING INTERSECT WITH THE 100.00 FOOT LINE AND THE WESTLINE OF BROADWAY AS MONUMENTED. THE SOUTHEAST CORNER OF THE PARCEL IS A PROPORTIONMENT BETWEEN THE CALCULATED SOUTHEAST CORNER OF BLOCK 5 AND THE FOUND MONUMENT AT THE SOUTHEAST CORNER OF BLOCK 7. THE WEST CORNER IS AN INTERSECTION OF THE RECORD NORTH 70° 00' 00" WEST BEARING WITH THE 100.00 FOOT LINE OF THE HIGHWAY. MONUMENTS WERE SET AT LOCATIONS SHOWN.

- - INDICATES SET 5/8" x 24" IRON ROD WITH A YELLOW PLASTIC CAP MARKED "WOBBE-PLS 1093".
 - () - INDICATES RECORD DATA PER MAP FILE M 107-78 AND MAP OF WINCHESTER BAY AS FILED IN VOL. 5, PAGE 26 AND FILE 778, PAGE 154 DOUGLAS COUNTY, OREGON.
 - * - INDICATES DATA SAME AS RECORD.
 - ⊙ - INDICATES CALCULATED POINT NOT SET.
- THERE IS NO RECORD FOR OTHER DATA.



MAP NO. 22-12-7CA T.L. 6700

REGISTERED PROFESSIONAL LAND SURVEYOR
Eugene M. Wobbe
 OREGON
 JULY 30, 1974
EUGENE M. WOBBE
 1093
 EXPIRES 12/31/94

WOBBE & ASSOCIATES, INC.
 510 KINGWOOD ST./P.O. BOX 1136
 FLORENCE, OR 97439
 SURVEY FOR
 CENTRAL LINCOLN P.U.D.
 SW 1/4, SEC. 7, T 22 S, R 12 W, W.M.
 DOUGLAS COUNTY, OREGON.
 DATE 4/27/1993