

A SURVEY FOR SILVER BUTTE TIMBER CO.

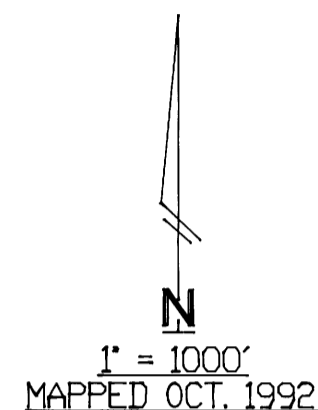
IN SECTION 34, T29S, R4W, W.M.,
DOUGLAS COUNTY, OREGON
(NW1/4, SW1/4, SE1/4 - SEC. 34)

FILED IN
COUNTY RECORDS
DOUGLAS COUNTY, OREGON

M117-1

CORNER INFORMATION

- ① Fd. 1" IP.
42' Fir N60°E 59.4'
50' Cedar S47°W 17.8'
28' Fir N16°W 27.0'
32' Fir S60°E 16.5' (snag)
18' Cedar S85°E 32.5'
- ② Fd. B. CAP
14' Fir N45°E 40.0'
14' Fir S49°W 25.8'
- ③ Fd. B. CAP
18' W. Fir N46°W 54.5'
Rotted Stump Approx. S21°E 93.0'
New BT: 6' Fir N24°E 8.2' - SCRIBED 1/4 S34 BT.
- ④ Fd. 1" IP.
23' Leaning B. Oak Snag N88°E 35.4'
15' B. Oak (split & irreg. shaped) S41°W 18.5'
21' Pine N50°E 24.0' (dead or dying)
13' Laurel N33°W 62.2' (vs. scribe)
Fir to NW is down
22' Fir N82 1/2°E 22.0' (chop marks in bark)
- ⑤ Fd. 1 1/4" IP.
26' Cedar S 5°E 31.68'
Decomposing Fir Stump S10°W 17.82'
16' Fir S56°W 51.3'
17' Leaning Laurel S63°E 22.7' (to base)
- ⑥ Fd. 2" IP.
26' Fir N72°42'W 36.8'
10' Laurel N48°E 41.8'
36' Fir N32°E 24.42'
27' Fir N60°30'W 7.26'
Scribe still visible on
stump of down & decomposing
laurel (approx. N42°E 46.5')
- ⑦ SET 5/8" x 30" IR.
7' Madrona N60 1/2°E 12.3'
6' Fir S25 1/2°E 19.0'
15' Madrona S23 1/2°W 36.5'
5' Madrona N23°W 28.7' } SCRIBED "1/4 S34 BT."
- ⑧ Fd. 1" IP. - (bears N73°20'W 7.85' from comp. point)
25' Fir N69°W 10.5' (9.5 to face)
Base of 12' Leaning snag South 10.7' (10.2' to face)
- ⑨ Fd. 1" IP. (bears S88°53'W 17.9' from comp. point)
NW BT no longer in place
24' Madrone bears S23°53'W 37.3'
- ⑩ Fd. 1" IP. (bears N30°47'W 4.8' from comp. point)
Stump of 16' Madrona bears N15°25'E (15.1' to face) 15.8'
16' Madrona S31°30'W (7.6' face) 8.2'
- ⑪ Fd. 1" IP. (outside dia.)
24' Cedar S10°W 16 Lks.
Record 5' Cedar is now down-visible scribe on decomposing
stump



NARRATIVE:

PURPOSE: SURVEY FOR PURPOSE OF
LOCATING TIMBER BOUNDARIES

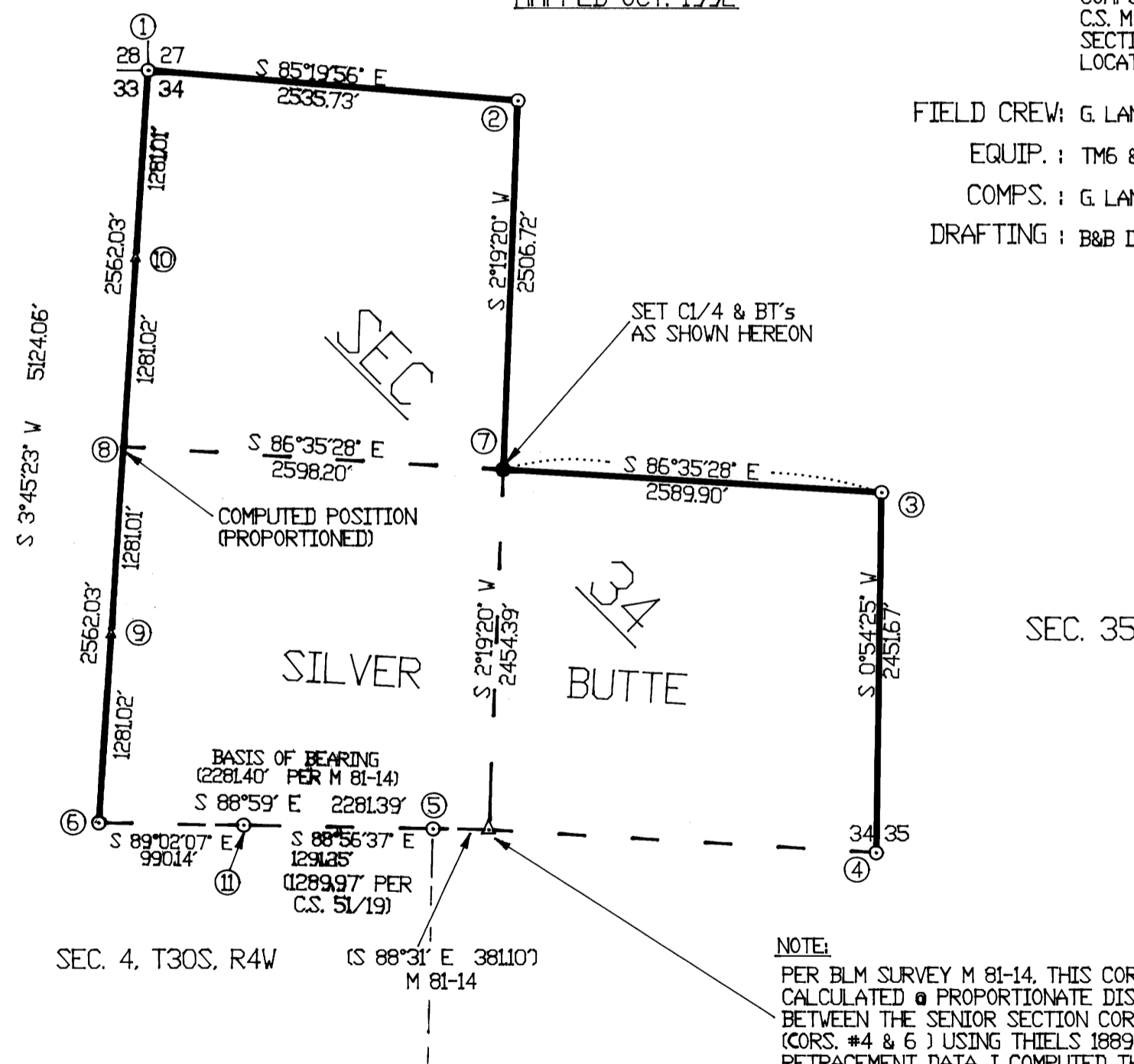
COMPUTED SW1/4 COR. PER
C.S. M 81-14 AND INTERSECTED
SECTIONAL CENTERLINES FOR
LOCATION OF C1/4.

FIELD CREW: G. LANG, L. LANG

EQUIP.: TM6 & RED 1 EDM

COMPS.: G. LANG

DRAFTING: B&B DRAFTING



LEGEND:

- ⊙ - FOUND AS NOTED.
- - SET 5/8" x 30" IR/PLASTIC CAP MARKED "LANG SURVEYING"
- △ - COMPUTED POINT
- - FLAGGED & BLAZED
- - - NOT FLAGGED OR BLAZED

SURVEYED BY: GREG LANG
7550 WILLIS CREEK RD.
WINSTON, OR. 97496

REGISTERED
PROFESSIONAL
LAND SURVEYOR
Gregory D Lang
OREGON
JULY 18, 1987
GREGORY D LANG
2205
EXPIRATION 12-31-94