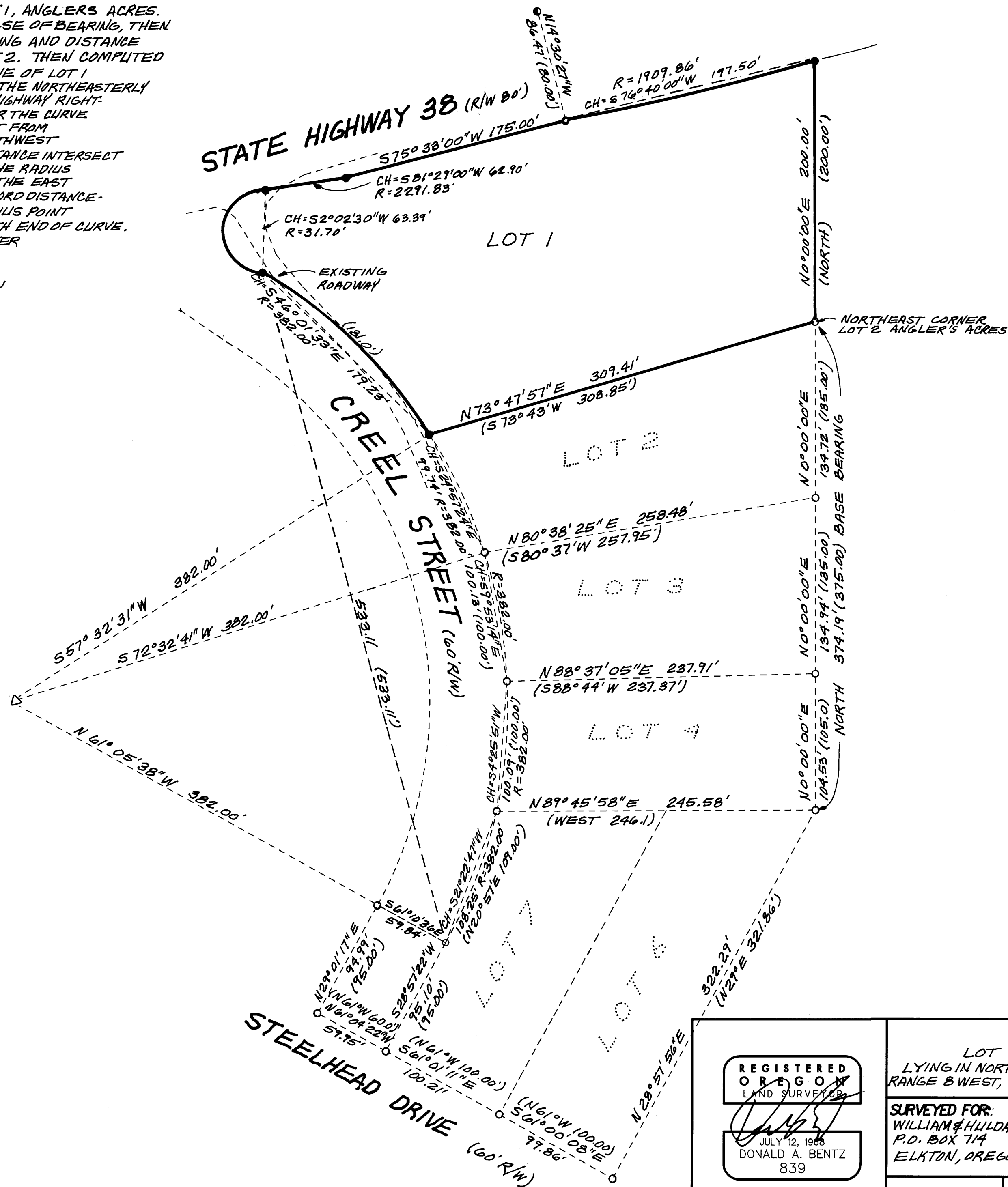


**NARRATIVE:**

SURVEY TO RESET MONUMENTS FOR LOT 1, ANGLERS ACRES. USED EAST LINE OF SUBDIVISION FOR BASE OF BEARING, THEN EXTENDED THE EAST LINE RECORD BEARING AND DISTANCE FROM THE NORTHEASTERLY CORNER OF LOT 2. THEN COMPUTED THE MONUMENTS ALONG THE NORTHERLY LINE OF LOT 1. RECORD BEARINGS AND DISTANCES FROM THE NORTHEASTERLY CORNER PER SUBDIVISION PLAT AND STATE HIGHWAY RIGHT-OF-WAY MAP. COMPUTED THE RADIUS POINT FOR THE CURVE ON THE EAST RIGHT-OF-WAY OF CREEL STREET FROM FOUND MONUMENTS THEN COMPUTED THE SOUTHWEST CORNER OF LOT 1 BY RECORD DISTANCE - DISTANCE INTERSECT FROM SOUTHWEST CORNER OF LOT 2 AND THE RADIUS POINT. COMPUTED THE OTHER MONUMENT ON THE EAST RIGHT-OF-WAY OF CREEL AND LOT 1 BY A RECORD DISTANCE - DISTANCE INTERSECT FROM COMPUTED RADIUS POINT AND THE FOUND MONUMENTS AT THE SOUTH END OF CURVE. FIELD CREW: NEIL HIBBS, ROD McALLISTER  
OFFICE: ALLEN TEITZEL  
DRAFTING: KEN VANGORDON  
MAPS: VOL. II, PAGE 45, AND STATE HIGHWAY RIGHT OF WAY MAP 1B-22-23

**LEGEND**

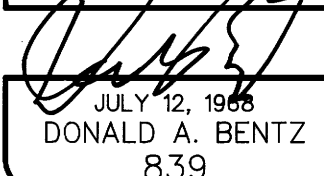
- SET 5/8" X 30" IRON ROD W/ CAP STAMPED "i.e. ENGINEERING"
- F.D. 3/4" I.P.
- F.D. 5/8" R/W ROD
- △ COMPUTED POINT
- ( ) RECORD



FILED  
APR 29 1993  
COUNTY SURVEYOR  
DOUGLAS COUNTY, OREGON

MAP FILE M.116-70

MAP FILE M.116-70

<p><b>REGISTERED OREGON LAND SURVEYOR</b></p>  <p>JULY 12, 1988 DONALD A. BENTZ 839</p> <p>EXPIRES 12-31-93</p>	<p><b>SURVEY</b> LOT 1, ANGLERS ACRES LYING IN NORTHEAST 1/4 SECTION 23, TOWNSHIP 22 SOUTH, RANGE 8 WEST, W.M. DOUGLAS COUNTY, OREGON</p>		
	<p><b>SURVEYED FOR:</b> WILLIAM &amp; HILDA SCHMIDT P.O. BOX 714 ELKTON, OREGON 97436</p>	<p><b>SURVEYED BY:</b> <b>i.e.</b> ENGINEERING 1205 S.E. Court Street Roseburg, Oregon 97470 PHONE (503) 673-0166 FAX (503) 440-9392</p>	
<p>SCALE: 1"=60'</p>	<p>DATE: APR. 1993</p>	<p>649-01</p>	<p>PAGE: 1 OF 1</p>

COUNTY SURVEYORS FILE DATA  
DO NOT REMOVE FROM OFFICE