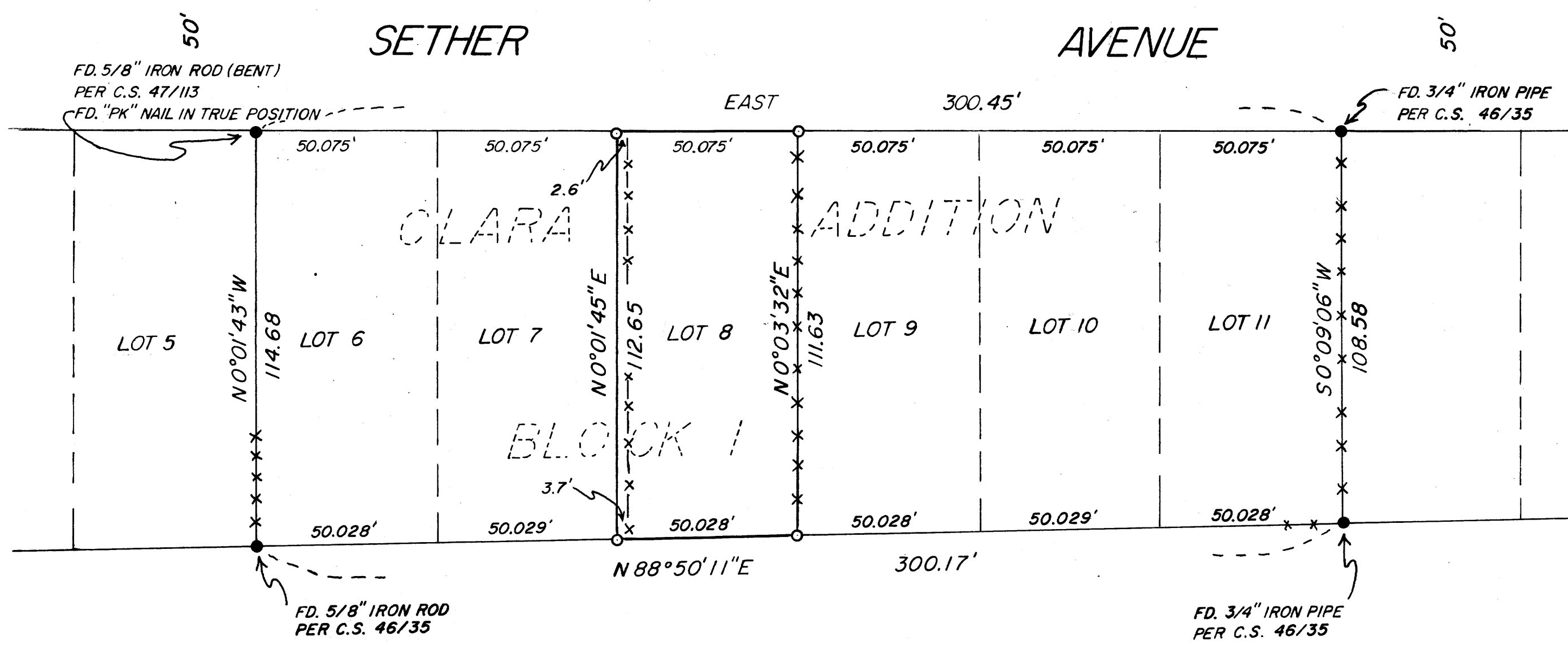


# PLAT

SHOWING A SURVEY OF LOT 8, BLOCK 1 OF CLARA  
ADDITION TO CITY OF GLENDALE, NW 1/4 OF SECTION 4,  
T.33S., R.6W., W.M. DOUGLAS COUNTY, OREGON.

FILED *JR*  
APR 26 1993 *JC*  
COUNTY SURVEYOR  
DOUGLAS COUNTY, ORE.  
*JC*



### LEGEND

- SET 5/8" X 30" IRON ROD WITH YELLOW PLASTIC CAP MARKED "NYGREN LS 1035".
- FOUND IRON MONUMENT AS NOTED.
- x-x-x-x FENCE

BEARINGS BASED ON THE SOUTH R/W LINE OF SETHER AVENUE WHICH IS ASSUMED AS DUE EAST.

SURVEY NARRATIVE IS A SEPARATE DOCUMENT.

REGISTERED  
PROFESSIONAL  
LAND SURVEYOR

*Gerald V. Nygren*  
OREGON  
GERALD V. NYGREN  
AUGUST 22, 1975  
1035

EXPIRATION DATE 12/31/94

SURVEYED FOR: ROY MORGAN P.O. BOX 732 GLENDALE, OR 97442	GERALD V. NYGREN 522 BARKER DRIVE MERLIN, OREGON 97532	DATE: 1-10-93 SCALE: 1"=30' JOB NO. 92-45
---	--	---

COUNTY SURVEYORS FILE DATA  
DO NOT REMOVE FROM OFFICE

U.S. FILE 63, 134  
 Map File M 116-69

U.S. FILE 63, 134

SURVEY NARRATIVE to comply with O.R.S. 209.250

FILED

DATE: March 3, 1994.  
SURVEYED FOR: City of Glendale  
P.O. Box 361  
Glendale, Oregon 97442  
SURVEYED BY: Gerald V. Nygren, PLS  
522 Barker Drive  
Merlin, Oregon 97532

Date: 5/26/94 By: J.P.  
This survey consists of:  
Map: M 118-79  
Narrative: C.S. 63/134  
Corner Rpt: \_\_\_\_\_

DOUGLAS COUNTY,  
SURVEYOR

LOCATION: Sections 5, 6, 7 and 8, Township 33 South,  
Range 6 West, Willamette Meridian, Douglas  
County, Oregon.

PURPOSE: To survey and mark the following lines:  
The North line, East line and East Half of the  
South line of the South Half of the Southwest  
Quarter of said Section 5; The North and West  
lines of the Southeast Quarter of the Southeast  
Quarter of said Section 6; The West and South  
lines of the Northeast Quarter of the Northeast  
Quarter of said Section 7; The South and East  
lines of the Northwest Quarter of the Northwest  
Quarter of said Section 8.

PROCEDURE: I recovered and held to monuments shown as  
found on survey Map.

The following described corners were used to  
control this survey or were set in this survey:

- (1) At the Quarter corner for Section 6 only I found a  
1 1/2" galvanized iron pipe with 3" brass cap stamped:

Ore. St. Bd. of Forestry  
1/4 S6  
1964  
RS 359

Reference found this survey:

A Douglas Fir 17 inches in diameter, bears S02°W, 35.8  
feet distance, healed blaze.

A Douglas Fir 14 inches in diameter, bears N49°E, 12.3  
feet distance, healed blaze.

(continued on page 2)

(continued from page 1)

- (2) At the West Quarter corner of said Section 6, I found a 1 1/2" galvanized iron pipe with 2 1/2" brass cap stamped:

DEPARTMENT OF INTERIOR  
BUREAU OF LAND MANAGEMENT  
1/4

S1 S6

R7W R6W  
T33S  
1963

References found this survey:

A Douglas Fir, 20 inches in diameter, bears N17°E, 8.9 feet distance, healed blaze.

A Incense Cedar, 13" in diameter, bears N10°W, 27.7 feet distance, visible scribe.

- (3) At the Quarter corner common to Sections 5 and 6, I found a 1 1/2" galvanized iron pipe with a 3" brass cap stamped:

Ore. St. Bd. of Forestry  
1/4  
S6 S5  
1964  
RS 359

References found this survey:

A Madrone, 28 inches in diameter, bears N80°W, 11.9 feet distance, visible scribe.

A Chinquapin, 12 inches in diameter, bears S21°E, 10.6 feet distance, visible scribe.

A Fir stump 56 inches in diameter, bears N68°W, 32.2 feet distance.

- (4) At the Center Quarter corner of said Section 5, I found a 5/8" iron rod with yellow plastic cap marked "HULL RS 901".

References found this survey:

A Douglas Fir, 9 inches in diameter, bears S88°E, 14.1 feet distance, visible scribe.

A Douglas Fir, 9 inches in diameter, bears N48°E, 19.8 feet distance, visible scribe.

(continued on page 3)

(continued from page 2)

A Douglas Fir, 13 inches in diameter, bears N62°W, 19.0 feet distance, healed blaze.

A Maple, 12 inches in diameter, bears S61°W, 25.0 feet distance, visible scribe.

- (5) At the Southeast One-sixteenth corner of said Section 6, I set a 5/8" X 30" iron rod with yellow plastic cap marked "NYGREN LS 1035".

New references established this survey:

Douglas Fir, 12 inches in diameter, bears N30°E, 8.3 feet distance, scribed "SE 1/16 S6 BT".

A Madrone, 20 inches in diameter, bears N70°W, 10.0 feet distance, scribed "SE 1/16 S6 BT".

- (6) At the South One-sixteenth corner common to Sections 5 and 6, I set a 5/8" X 30" iron rod with yellow plastic cap marked "NYGREN LS 1035".

New references established this survey:

A Douglas Fir, 5 inches in diameter, bears N38°E, 8.2 feet distance, scribed "X BT".

A Tan Oak, 5 inches in diameter, bears S44°E, 4.8 feet distance, scribed "X BT".

- (7) At the Center South One-sixteenth corner of said Section 5, I set a 5/8" X 30" iron rod with yellow plastic cap marked "NYGREN LS 1035".

New references established this survey:

A Douglas Fir, 8 inches in diameter, bears N20°W, 25.4 feet distance, scribed "CS 1/16 S5 BT".

A Madrone, 7 inches in diameter, bears N70°E, 21.9 feet distance, scribed "CS 1/16 S5 BT".

- (8) At the Quarter corner common to Sections 6 and 7, I found a 1 1/2 iron pipe with a 2 1/2" brass cap stamped:

DEPARTMENT OF INTERIOR  
BUREAU OF LAND MANAGEMENT  
T 33 S R 6 W  
S 6  
1/4  
S 7  
1964

References found this survey:

(continued on page 4)

Survey No. M 118-79  
page 4 of 8

(continued from page 3)

A Douglas Fir, 12 inches in diameter, bears N85°W, 53.5 feet distance, healed blaze.

A Douglas Fir, 29 inches in diameter, bears S38°E, 58.1 feet distance, healed blaze.

- (9) At the East One-sixteenth corner common to Sections 6 and 7, I found a 1 1/2" iron pipe with a 2 1/2" brass cap stamped:

DEPARTMENT OF INTERIOR  
BUREAU OF LAND MANAGEMENT  
S 6 E 1/16  
S 7  
1964

References found this survey:

A Douglas Fir, 12 inches in diameter, bears N14°W, 21.1 feet distance, healed blaze.

A Douglas Fir, 15 inches in diameter, bears S23°W, 62.0 feet distance, healed blaze.

- (10) At the corner of Sections 5,6,7 and 8, I found 1 1/2" iron pipe with a 2 1/2" brass cap stamped:

COUNTY SURVEYORS OFFICE

1963            S 6   S 5   T 33 S  
                 -----  
                 S 7   S 8   R 6 W

References found this survey:

A Douglas Fir, 14 inches in diameter, bears S80°E, 77.2 feet distance, healed blaze.

A Madrone, 14 inches in diameter, bears S10°E, 7.9 feet distance, healed blaze.

A Madrone, 14 inches in diameter, bears S20°W, 7.3 feet distance, healed blaze.

- (11) At the West One-sixteenth corner common to Sections 5 and 8, I set a 5/8" X 30" iron rod with yellow plastic cap marked "NYGREN LS 1035".

New references established this survey:

A Douglas Fir, 6 inches in diameter, bears N30°W, 7.1 feet distance, scribed "W 1/16 S5 BT".

(continued on page 5)

C.S. File No. 63/134

(continued from page 4)

A Douglas Fir, 9 inches in diameter, bears S56°W, 10.6 feet distance, scribed "W 1/16 S8 BT".

- (12) At the Quarter corner common to Sections 5 and 8, I set a 5/8" X 30" iron rod with yellow plastic cap marked "NYGREN LS 1035".

New references established this survey:

A Douglas Fir, 8 inches in diameter, bears S76°W, 24.4 feet distance, scribed "1/4 S8 BT".

A Douglas Fir, 8 inches in diameter, bears S67°E, 11.2 feet distance, scribed "1/4 S8 BT".

A Douglas Fir, 7 inches in diameter, bears N62°W, 32.2 feet distance, scribed "1/4 S5 BT".

A Madrone, 12 inches in diameter, bears N70°E, 28.6 feet distance, scribed "1/4 S5 BT".

- (13) At the corner of Sections 4,5,8 and 9 I found a 2 1/2" galvanized iron pipe with brass cap stamped:

DEPARTMENT OF INTERIOR  
BUREAU OF LAND MANAGEMENT  
T 33 S R 6 W

S 5 S 4

S 8 S 9

1963

References found this survey:

A Cedar, 23 inches in diameter, bears S82°20'W, 16.0 feet distance, healed blaze.

A Cedar, 33 inches in diameter, bears S01°35'W, 51.2 feet distance, healed blaze.

A Cedar, 18 inches in diameter, bears S63°52'E, 35.9 feet distance, visible scribe.

A Cedar, 33 inches in diameter, bears N19°56'E, 89.5 feet distance, healed blaze.

- (14) At the Northeast One-sixteenth corner of said Section 7, I found a 2 1/2" galvanized iron pipe with 2 1/2" brass cap marked:

(continued on page 6)

(continued from page 7)

A Douglas Fir, 55 inches in diameter bears S85°W, 38.3 feet distance, visible scribe.

A Tan Oak, 15 inches in diameter, bears N48°W, 26.0 feet distance, healed blaze.

Bearings based on the North line of the Southwest Quarter of Section 5 per RM 103-3/CS file 63/24(N).

This survey was executed with a Mac 1E EDM and Wild T-16 Theodolite.

FILED

Date: 5/26/94 By: JP  
This survey consists of:  
Map: M118-79  
Narrative: C.S. 63/134  
Corner Rpt: \_\_\_\_\_

DOUGLAS COUNTY  
SURVEYOR

REGISTERED  
PROFESSIONAL  
LAND SURVEYOR

*Gerald V. Nygren*

OREGON  
GERALD V. NYGREN  
AUGUST 22, 1975  
1035

EXPIRES 12-31-94