

RECORD OF SURVEY

IN LOTS 11, 12, 13 & 14 BUNKER HILL ADDITION
IN SW 1/4, SEC. 13 & NW 1/4, SEC. 24, T30S, R6W, W.M.
DOUGLAS COUNTY, OREGON
CITY OF RIDDLE

SCALE: 1" = 40'

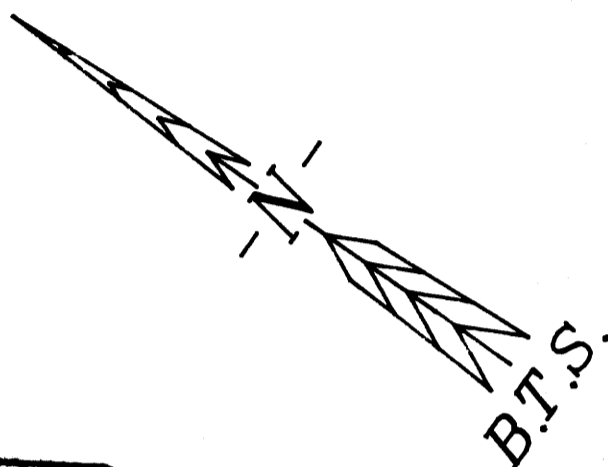
DATE: APRIL 1993

SURVEYED BY:
BTS SURVEYING INC.
431 S.E. MAIN STREET
ROSEBURG, OR 97470

SURVEYED FOR:
CHURCH OF THE OPEN BIBLE
456 SMITH STREET
RIDDLE, OR 97469

LEGEND:

- ⊙ = SET 5/8" x 30" I.R. w/PLASTIC CAP MK'D. 'BAUGHMAN TECH. SERV.'
- = FD. AS NOTED
- ▲ = COMPUTED POINT, NOT SET
- [] = RECORD CALL PER M110-43
- () = RECORD CALL PER M13-52
- < > = RECORD CALL PER M54-77



REGISTERED
PROFESSIONAL
LAND SURVEYOR

Kristian O. DeGroot

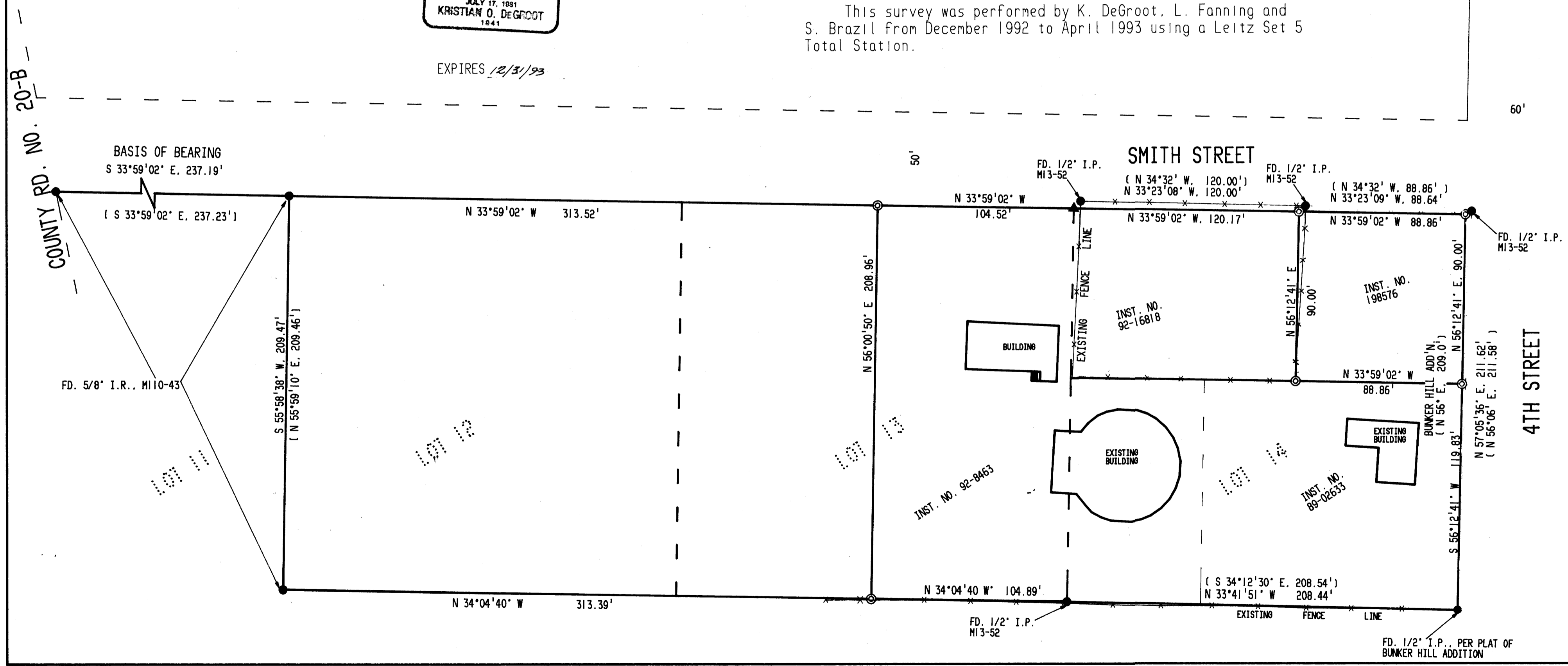
OREGON
JULY 17, 1981
KRISTIAN O. DEGROOT
1941

EXPIRES 12/31/93

NARRATIVE:

The purpose of this survey was to monument that real property described in Inst. No. 89-02633, 92-08463 and 92-16818 of the Deed Records of Douglas County, Oregon. Monuments found at the N.E. and S.E. corners of Lot 11, Bunker Hill Addition per M 160-43 were used to control the westerly line of Smith Street. An original monument at the S.W. corner of Lot 14 and monuments found per M 54-77 controlled the northerly line of 4th Street. The S.E. corner of Lot 14 was established by intersecting these above described lines. The N.E. and S.E. corners of Lot 13 were then computed at proportionate distances between this corner and the S.E. corner of Lot 11. The N.W. corner of Lot 13 was computed at proportionate distances between the S.W. corner of Lot 11 per M 110-43 and the N.W. corner of Lot 14 per M 13-52. The N.E. and N.W. corners of Inst. No. 92-8463 were then monumented at deed distances on these lines. The N.E., N.W. and S.W. corners of Inst. No. 198576 were monumented per deed record. I found a significant blunder in the positions of monuments found per M 13-52 along the S.E. and N.E. lines of Lot 14 as shown on the face of the map. A retaining wall and fence line built along the S.E. line of Inst. No. 92-16818 per M 13-52 monuments now encroaches onto Inst. No. 198576, and the fence line on the N.E. line of Inst. No. 92-16818 encroaches onto Smith Street. Encroachments along the N.W. and S.W. of Inst. No. 92-16818 exist but are not detailed because the Church of the Open Bible is purchasing Inst. No. 92-16818.

This survey was performed by K. DeGroot, L. Fanning and S. Brazil from December 1992 to April 1993 using a Leitz Set 5 Total Station.



MAP FILE M114 - 67