

CORNER INFORMATION

43 NORTH 1/16 CORNER SECTIONS 20 & 21

FD: 3/4" BLM. BRASS CAP ON 2 1/2" IRON POST.
 BT'S FD:
 46" D. FIR, N 35° 46' E 35.5, HEALED FACE. (N 34° 3/4' E 56 LKS.)
 25" D. FIR SNAG, N 64° 38' E 35.6, HEALED FACE. (NO RECORD)
 23" D. FIR, N 31° 31' W 56.8, HEALED FACE. (N 32 1/2' W 86 LKS.)
 OLD DOWN FENCE CORNER IS N 58° 25' W 15.8, FENCE GOES N & W.



59 WEST 1/4 CORNER SECTION 21

FD: 2 1/2" O.G.S.O. BRASS CAP ON 1 1/4" IRON POST.
 BT'S FD:
 16" R. ALDER, S 6° 16' E 7.9, SMALL HEALED FACE. (NO RECORD)
 24" W.R. CEDAR, S 88° 21' E 35.5, HEALED FACE. (S 88° E 53 LKS.)
 20" W.R. CEDAR, S 26° 53' W 28.5, HEALED FACE. (S 27° W 44 LKS.)
 17" W.R. CEDAR, N 50° 15' W 20.7, HEALED FACE. (N 56 1/4' W 32 1/2' LKS.)



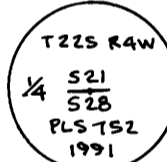
95 EAST 1/4 CORNER SECTION 21

FD: 1" BRASS DISC ON 3/4" T" IRON, 3/4" IRON PIPE IS 0.75 WEST OF "T" IRON.
 BT'S FD:
 54" D. FIR STUMP, N 35° 41' E 47.2, NO MARKS VISIBLE. (N 35° E 42.1 TO FACE)
 19" D. FIR, N 00° 06' E 5.7 TO CENTER, 5.13 TO "W" NAIL, SMALL HEALED FACE
 3 1/2" HIGH, BACK SCRIBING "BT" 1/4 S 22 BT: (N 59° E 5.3 TO "W" NAIL)
 21" D. FIR SNAG, S 32° 33' W 34.6, NO MARKS VISIBLE (S 34° W 33.3 TO "W" NAIL)



113 SOUTH 1/4 CORNER SECTION 21

FD: 2 1/2" BRASS CAP ON 2" IRON PIPE.
 BT'S FD:
 26" W.R. CEDAR, N 18° 33' E 126.9, SMALL FACES 4 1/2" HIGH SCRIBING "1/4 S 2" VISIBLE ON UPPER FACE, LOWER FACE ROTED. (N 18 1/2° E 127.9)
 23" D. FIR, N 59° 39' E 167.1, FACES NOT YET HEALED PITCHED OVER. (N 60° E 167.2)
 30" D. FIR, S 89° 30' E 245.9, FACES ALMOST HEALED, PARTIAL SCRIBING VISIBLE. (S 89 1/2° E 245.6)
 8" POWER POLE, S 20° 51' E 40.3. (S 20 3/4° E 40.3)



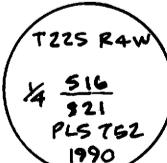
118 N.E. CORNER SECTION 21

FD: 3/4" BLM. BRASS CAP ON 2 1/2" IRON POST.
 BT'S FD:
 9" D. FIR, N 68° 35' E 12.3, FACE ALMOST HEALED. (N 69 1/2° E 19 LKS.)
 6" D. FIR, S 26° 24' E 20.0, SMALL FACES NOT YET HEALED, SCRIBE "X" ON UPPER FACE, SCRIBE "BT" ON LOWER FACE. (S 25 1/2° E 31 LKS.)
 5 1/2" D. FIR STUMP, S 21° 22' E 11.4, FACE CHOPPED OUT AND BURNED, NO MARKS VISIBLE. (S 28° E 117 LKS.)
 9" D. FIR, S 58° 23' W 24.9, FACE ALMOST HEALED. (S 59 3/4' W 54 LKS.)
 6" D. FIR, N 80° 34' W 29.0, SMALL FACES NOT YET HEALED, PITCHED OVER, PARTIAL SCRIBING VISIBLE. (N 81 1/2° W 44 LKS.)
 54" D. FIR STUMP, N 72° 02' W 135.1 TO CENTER, 133.18 TO "W" NAIL, "W" NAIL ONLY MARK REMAINING. (N 72° W 133.4)



121 NORTH 1/4 CORNER SECTION 21

FD: 2 1/2" BRASS CAP ON 2" IRON PIPE.
 BT'S FD:
 48" D. FIR STUMP, N 15° 38' E 12.5, FACE CHOPPED OUT & ROTED. (N 12 3/4° E 10.6)
 54" D. FIR STUMP, S 11° 18' W 39.1, SMALL FACE ON BARK NO SCRIBING VISIBLE, "W" NAIL EXPOSED. (S 10 3/4° W 36.7)

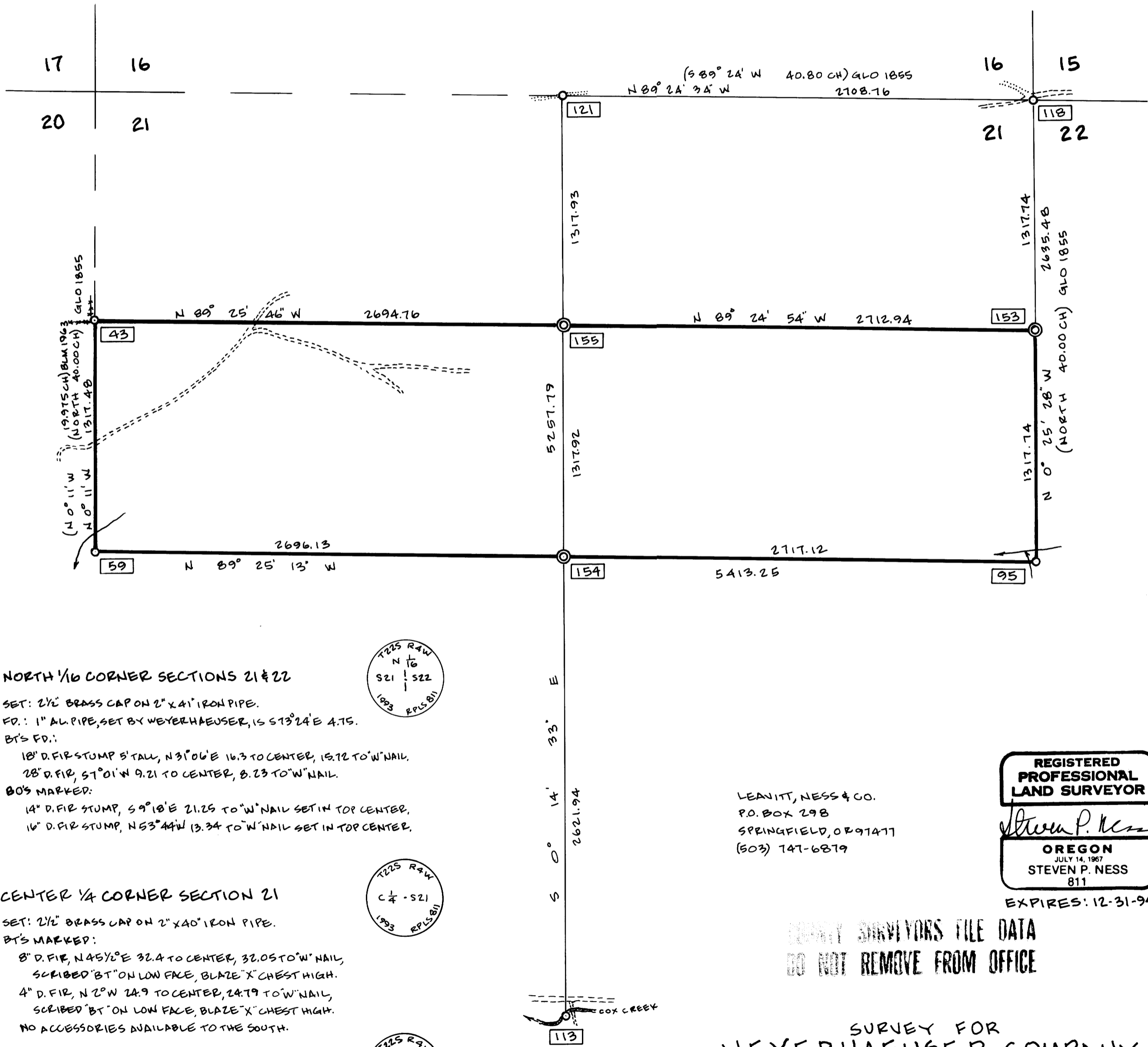


NARRATIVE

THIS SURVEY WAS PERFORMED AT THE REQUEST OF THE WEYERHAEUSER COMPANY TO FIND AND SET PROPERTY CORNERS AND TO MARK THE PROPERTY LINES BETWEEN THESE POSITIONS. THE "1973 MANUAL OF SURVEY INSTRUCTIONS" WAS USED AS A GUIDE IN SUB-DIVIDING SECTION 21. THE CORNER POSITIONS USED TO CONTROL THE PROPERTY CORNERS SET WERE TIED IN A CLOSED TRIANGULAR SCHEME. THE WEYERHAEUSER MONUMENT FOUND AT THE N 1/16 S 21 & S 22 WAS DEEMED TOO FAR OUT OF POSITION TO USE FOR CONTROL. THE BASIS OF BEARING FOR THIS SURVEY IS THE 1963 BLM. RECORD BEARING OF N 0° 11' W BETWEEN CORNERS 59 AND 43 AS SHOWN. DISTANCES TO BEARING TREES WERE TAKEN TO THE CENTER SIDE AND ALSO TO THE "W" NAIL WHERE APPROPRIATE.

LEGEND

- MONUMENT FOUND AS DESCRIBED ○
- MONUMENT SET AS DESCRIBED ⊙
- PROPERTY LINE BLAZED & PAINTED AND MARKED WITH ORANGE GLO FLAGGING ————
- RECORD DATA ()
- CORNER NUMBER [121]
- GRAVEL ROAD - - - - -
- DIRT ROAD - - - - -
- CREEK ~~~~~
- FENCE LINE x x x x x



153 NORTH 1/16 CORNER SECTIONS 21 & 22

SET: 2 1/2" BRASS CAP ON 2" X 4" IRON PIPE.
 FD: 1" AL. PIPE, SET BY WEYERHAEUSER, IS S 73° 24' E 4.75.
 BT'S FD:
 18" D. FIR STUMP 5' TALL, N 31° 06' E 16.3 TO CENTER, 15.72 TO "W" NAIL.
 28" D. FIR, S 7° 01' W 9.21 TO CENTER, 8.23 TO "W" NAIL.
 80% MARKED:
 14" D. FIR STUMP, S 9° 18' E 21.25 TO "W" NAIL SET IN TOP CENTER.
 16" D. FIR STUMP, N 53° 44' W 13.34 TO "W" NAIL SET IN TOP CENTER.



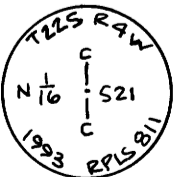
154 CENTER 1/4 CORNER SECTION 21

SET: 2 1/2" BRASS CAP ON 2" X 4" IRON PIPE.
 BT'S MARKED:
 8" D. FIR, N 45 1/2° E 32.4 TO CENTER, 32.05 TO "W" NAIL, SCRIBED "BT" ON LOW FACE, BLAZE "X" CHEST HIGH.
 4" D. FIR, N 2° W 24.9 TO CENTER, 24.79 TO "W" NAIL, SCRIBED "BT" ON LOW FACE, BLAZE "X" CHEST HIGH.
 NO ACCESSORIES AVAILABLE TO THE SOUTH.



155 CENTER NORTH 1/16 CORNER SECTION 21

SET: 2 1/2" BRASS CAP ON 2" X 4" IRON PIPE.
 BT'S MARKED:
 14" D. FIR, N 83° 43' E 28.2 TO CENTER, 27.56 TO "W" NAIL, SCRIBED "C N 1/16 S 21 BT".
 12" D. FIR, S 2° 08' E 16.0 TO CENTER, 15.48 TO "W" NAIL, SCRIBED "C N 1/16 S 21 BT".



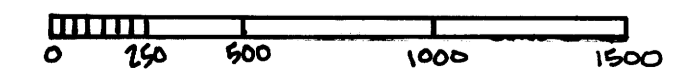
REGISTERED PROFESSIONAL LAND SURVEYOR

STEVEN P. NESS
 OREGON JULY 14, 1967
 STEVEN P. NESS 811
 EXPIRES: 12-31-94

LEANITT, NESS & CO.
 P.O. BOX 298
 SPRINGFIELD, OREGON 97147
 (503) 747-6879

PROPERTY SURVEYORS FILE DATA
 DO NOT REMOVE FROM OFFICE

SURVEY FOR WEYERHAEUSER COMPANY
 N 1/2, SECTION 21, T 22 S, R 4 W, W.M.
 DOUGLAS COUNTY, OREGON
 SCALE: 1" = 500'
 MARCH 30, 1993



MAP & TAX LOT NUMBER: 22-4-21 TAX LOT 200

M 116-66

MAP # 116-66