

# SURVEY FOR ELMER ROSE

LOCATED IN THE UNRECORDED PLAT OF WHITE'S ACRES, SE1/4 SECTION 14 AND NE1/4 SECTION 23, T22S, R10W, W.M.  
DOUGLAS COUNTY, OREGON

FILED *JC*

APR 12 1993 *BC*

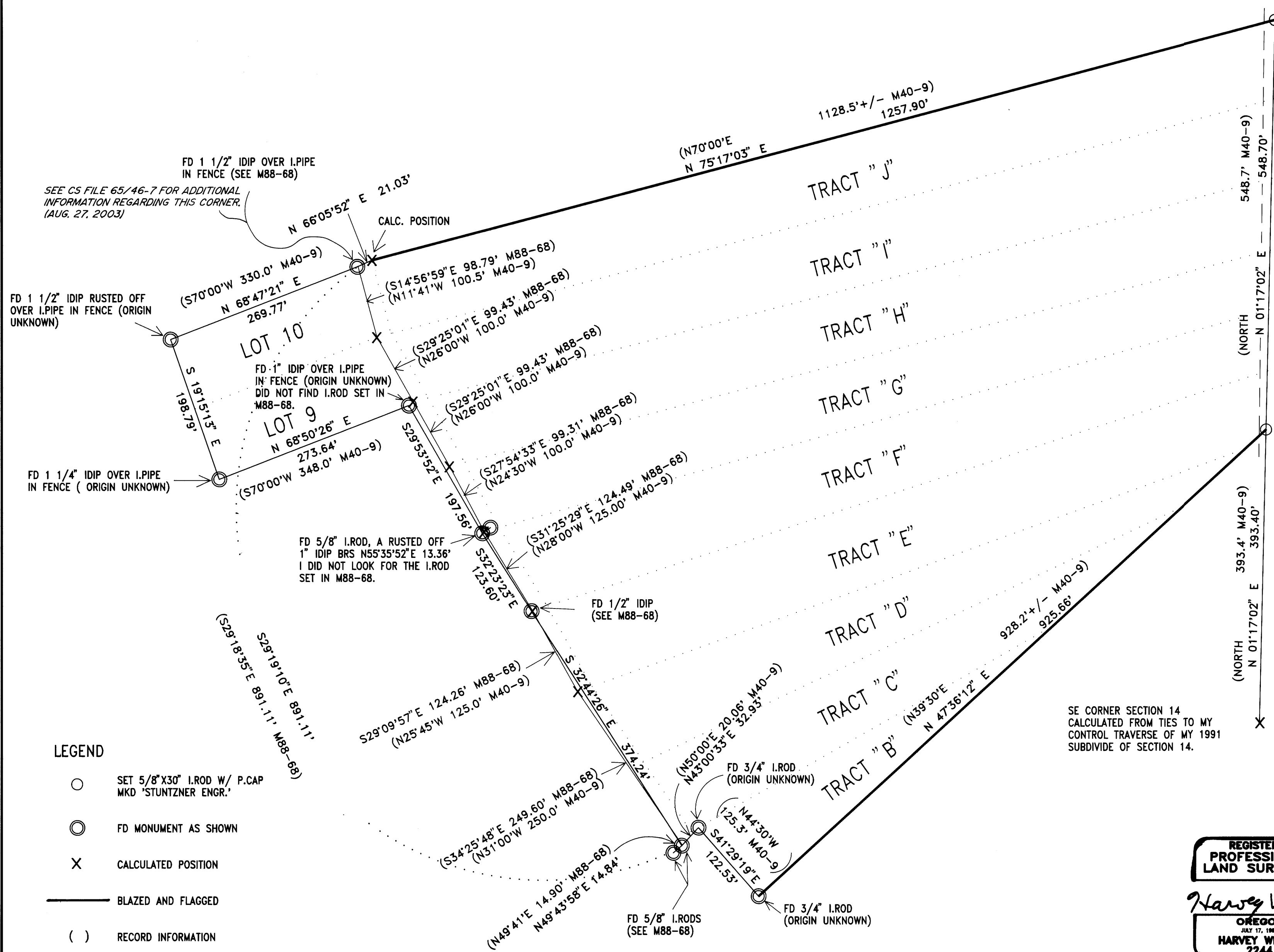
## NARRATIVE

THE PURPOSE OF THIS SURVEY WAS TO SET THE CORNERS AND BLAZE THE LINES SHOWN FOR LOGGING. IN 1991 I SUBDIVIDED SECTION 14. I TIED INTO CONTROL FROM FROM MY PREVIOUS SURVEY TO GET THE EAST LINE OF SECTION 14. I THAN TIED THE CORNERS ALONG WEST SCOTTSBURG ROAD AS SHOWN. I USED THE I.P.I.PE AT THE NE CORNER OF LOT 10 AND THE I.ROD AT THE SE CORNER OF LOT 3 TO TIE INTO SURVEY M88-68. I USED THIS SURVEY TO CALCULATE THE NW CORNER OF TRACT J AND THE SOUTH CORNER OF TRACT B. I FOUND AND ACCEPTED A 3/4" I.ROD AT THE SOUTH CORNER OF TRACT B. THIS PROPERTY IS LOTS 9 AND 10 AND TRACTS B THROUGH J OF THE UNRECORDED PLAT OF WHITE'S ACRES AS SHOWN ON MAP M40-9 AND 1947 DESCRIPTIONS BY BUCKINGHAM. THE TRACTS BEGIN AT POINTS ON THE SECTION LINE AT SPECIFIC DISTANCES FROM THE SECTION CORNER. I SET THE SE CORNER OF TRACT E AND THE NE CORNER OF TRACT J AS CALLED FOR IN BUCKINGHAM'S DESCRIPTIONS, NOTE DISTANCE ERROR FOR TRACT J. THE DESCRIPTIONS THEN CALL +/- BEARINGS AND DISTANCES TO THE ROAD. I PUT ALL THE ERROR IN THESE CALLS AND INVERSED FROM MY SET POINTS TO THE ABOVE CALCULATED POINTS ON THE ROAD. EQUIPMENT USED WAS A WILD T16 THEODOLITE AND WILD D14 EDM.

## BASIS OF BEARINGS

THE BASIS OF BEARINGS IS A SOLAR OBSERVATION FROM MY 1991 SUBDIVIDE OF SECTION 14.

SCALE 1" = 100'



### LEGEND

- SET 5/8" X30" I.ROD W/ P.CAP MKD 'STUNTZNER ENGR.'
- ⊙ FD MONUMENT AS SHOWN
- X CALCULATED POSITION
- BLAZED AND FLAGGED
- ( ) RECORD INFORMATION

SE CORNER SECTION 14  
CALCULATED FROM TIES TO MY  
CONTROL TRAVERSE OF MY 1991  
SUBDIVIDE OF SECTION 14.

**REGISTERED  
PROFESSIONAL  
LAND SURVEYOR**

*Harvey Wilcox*  
**OREGON  
JULY 17, 1986  
HARVEY WILCOX  
2244**

EXPIRES 12/31/94

*Stuntzner Engineering  
& Forestry*

ENGINEERING • LAND SURVEYING • FORESTRY  
PLANNING • WATER RIGHTS

705 SOUTH 4th St. PHONE: (503) 267-2872  
POST OFFICE BOX 118 COOS BAY, OREGON 97420 FAX: (503) 267-0588

DRAWN BY: HARVEY WILCOX DATE: MARCH, 1993

CHECKED BY: HARVEY WILCOX DRAWING No.:

DESIGNED BY: REVISED:

JOB NAME: ELMER ROSE Sheet 1 of 1

**COUNTY SURVEYORS FILE DATA  
DO NOT REMOVE FROM OFFICE**

MAP FILE M116-65

MAP FILE M116-65