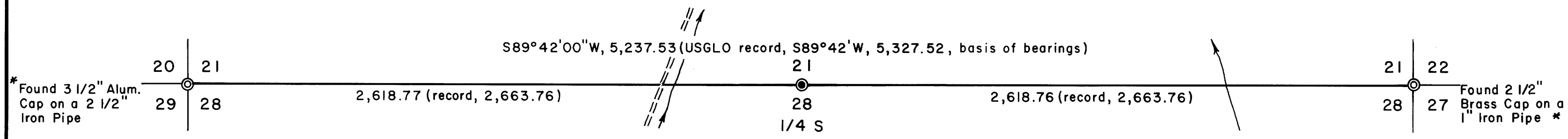


U S File 63 / 149

Map File 116 - 64



LEGEND

- * Section corner found
- * 1/4 section corner set, 2 1/2" Brass Cap on a 1" x 30" Iron Pipe
- Property Line

NARRATIVE:

The purpose of the survey was to reestablish the lost or obliterated quarter section corner common to Sections 21 and 28. The original was done by the U.S.B.L.M. in 1882. The corner was reestablished by proportional measurement between the two section corners.

The property was surveyed in April, 1993. The survey instruments used were a Jena 0°00'01" theodolite and a Mac II electronic distance meter.

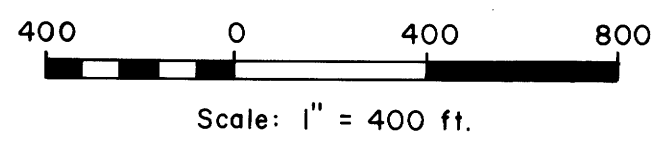
COUNTY SURVEYORS FILE DATA
DO NOT REMOVE FROM OFFICE

PROPERTY LINE SURVEY
North Line of Section 28, T 31 S, R 5 W, W. M.,
Douglas County, Oregon

For: Richard C. McKenzie
c/o Douglas Properties
321 Westwood Lane
Roseburg, Oregon 97470

By: Shaner Engineering, Inc.
P. O. Box 1430
Roseburg, Oregon 97470

Basis of bearings is
USGLO record bearing
of the north line
of Section 28



REGISTERED
PROFESSIONAL
LAND SURVEYOR

Bruce A. Shaner

OREGON
OCT 4 1957
BRUCE A. SHANER

Expires Dec. 31, 1994

* See separate Corner Reports
Filed in CS 63 / 149.

April 7, 1993

U S File 63 / 149
Map File 116 - 64