

NORTH 1/4 CORNER SECTION 30

- FD. 1950 G.L.O. BRASS CAP
- 28" FIR STUMP, N68°W, 15.8' (SCAR VIS.), 1950 B.T.
- 34" FIR STUMP, S20°W, 48.5' (SCAR VIS.), 1954 B.T.
- SET 8" FIR, S53°W, 16.2' (SCRIBED/PAINTED RED)
- 10" FIR, N41°W, 30.8' (SCRIBED/PAINTED RED)

N.W. CORNER SECTION 30

- FD. 1950 G.L.O. BRASS CAP
- 20" FIR, S58°E, 16.5' (SCAR VIS.), 1950 B.T.
- 39" FIR, N47°E, 19.8' (SCRIBE VIS.), 1950 B.T.

EAST 1/4 CORNER SECTION 25 ONLY

- FD. 1954 G.L.O. BRASS CAP
- 22" FIR, N85°W, 15.8' (SCAR VIS.), 1954 B.T.
- 28" FIR, S12°W, 6.6' (SCAR VIS.), 1954 B.T.

WEST 1/4 CORNER SECTION 30 ONLY

- FD. 1950 G.L.O. BRASS CAP MARKED "W.C. W1/4 S30"
- SET 8" FIR, N76°E, 5.4' (SCRIBED "W.C. 1/4 S, B.T.)
- 8" FIR, S03°W, 9.1' (SCRIBED "W.C. 1/4 S, B.T.)
- TRUE CORNER BEARS N1°27'E, 7.26'. AT TRUE CORNER POINT I FIND A 14" ROTTED FIR STUB.
- 14" FIR STUMP, S85°E, 14.5' (NO MARKS), 1883 B.T.
- 18" FIR STUMP, N33°E, 23.9' (SCAR VIS.), 1950 B.T.

LOCATION OF BURIED MAGNETIC MARKERS		
N.W. COR	0'	SOUTH (AL. POST)
E. 1/4 COR	50'	SOUTH (AL. POST)
W 30-1	100'	SOUTH (M.M. & AL. POST)
W 30-2	246'	SOUTH (M.M. & AL. POST)
N.W. COR.	0'	EAST (AL. POST)
N 30-1	50'	EAST (M.M.)
N 30-2	201'	EAST (M.M. & AL. POST)
N 30-3	319'	EAST (M.M.)
N 30-4	491'	EAST (M.M. & AL. POST)
N 30-5	666'	EAST (M.M. & AL. POST)
N 30-6	803'	EAST (M.M.)
N 30-7	920'	EAST (M.M. & AL. POST)
N 30-8	1124'	EAST (M.M. & AL. POST)
N 30-9	1172'	EAST (M.M.)
N 30-10	1280'	EAST (M.M.)
N 30-11	1338'	EAST (M.M. & AL. POST)
N 30-12	1392'	EAST (M.M.)
N 30-13	1434'	EAST (M.M.)
N 30-14	1476'	EAST (M.M. & AL. POST)
N. 1/4 COR.	3880'	EAST (AL. POST)

REGISTERED
PROFESSIONAL
LAND SURVEYOR

Lee Roberts

OREGON
AUGUST 25
L. D. ROBERTS
1989

EXPIRES 12-31-94

**SURVEY FOR
INTERNATIONAL PAPER COMPANY**

W1/2 W1/2 NORTH LINE SEC. 30, T20S, R8W
N1/2 N1/2 WEST LINE SEC. 30, T20S, R8W

DOUGLAS COUNTY, OREGON

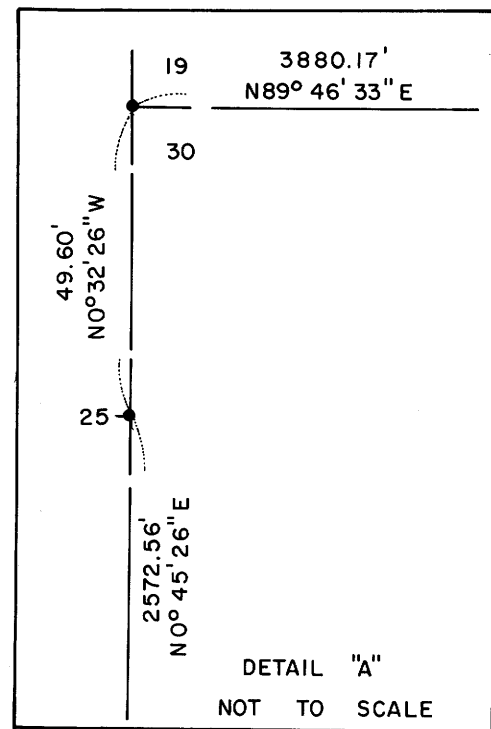
BY
ROBERTS SURVEYING INC.
29 WEST 29TH STREET
EUGENE, OREGON 97405

MARCH 12, 1993
SCALE 1" = 400'

LEGEND,

- MONUMENTS FOUND AND USED FOR CONTROL.
- MONUMENTS SET, NO MONUMENTS SET THIS SURVEY.
- () DATA OF RECORD, 1950 AND 1954 G.L.O. SURVEYS
- BASIS OF BEARING, NORTH 1/2 WEST LINE SECTION 30 FROM 1950 G.L.O. SURVEY.
- LINES BLAZED AND POSTED THIS SURVEY
- DISTANCES TO B.T.'S ARE CENTER MEASURE
- (M.M.) INDICATES LOCATION OF BURIED MAGNETIC MARKERS. MARKERS ARE FLUORESCENT ORANGE IN COLOR AND ARE BURIED, 12" TO 18" DEEP, ALONG LINE AS SHOWN.
- ALL NEW B.T.'S ARE SCRIBED AND HAVE A BRASS WASHER STAMPED "P.L.S. 1039" NAILED TO LOWER BLAZE. SCRIBED BLAZES ARE PAINTED RED.
- NEW B.T.'S HAVE A 6" STEEL SPIKE DRIVEN INTO THE CENTER OF THE TREE TO SERVE AS A CHAINING POINT FOR MEASURED DISTANCES.

NARRATIVE, THE PURPOSE OF THIS SURVEY IS TO POST AND BLAZE THE NORTH 250' OF THE WEST LINE OF SECTION 30 AND TO POST AND BLAZE THE WEST 1475' OF THE NORTH LINE OF SECTION 30. THE WEST 1/4 CORNER, THE N.W. SECTION CORNER AND THE NORTH 1/4 CORNER WERE FOUND IN THE FIELD AS SHOWN AND USED AS CONTROL FOR THIS SURVEY. A SERIES OF CLOSED RANDOM, WILD T-16 THEODOLITE AND A WILD DI-4L E.D.M., CONTROL TRAVERSES WERE RUN BETWEEN THE ABOVE FOUND CONTROLLING CORNERS. A CLOSED RANDOM, WILD T-16 THEODOLITE AND A WILD DI-4L E.D.M., PROPERTY LINE TRAVERSE WAS RUN ALONG ALL LINES TO BE BLAZED AND POSTED. OFFSETS WERE COMPUTED FROM THIS PROPERTY LINE TRAVERSE TO THE TRUE PROPERTY LINE. PROPERTY LINES WERE MARKED WITH RED PAINTED BLAZES, RED RIBBON, YELLOW INTERNATIONAL PAPER BOUNDARY LINE DECALS ATTACHED TO 72" ALUMINUM POSTS AND BURIED FLUORESCENT ORANGE MAGNETIC MARKERS. ALUMINUM POSTS AND BURIED MAGNETIC MARKERS ARE REFERENCED BY A 4" x 6" ALUMINUM BOUNDARY LINE TAG NAILED TO A NEARBY TREE.



**COUNTY SURVEYORS FILE DATA
DO NOT REMOVE FROM OFFICE**

Map File M116-60

Map File M116-60

M 116-60

FILED JC

OREGON CORNER RESTORATION FORM

MAR 29 1993

Section 30 Township 20S Range 8W

County Douglas Date 03-08-93

COUNTY SURVEYOR
DOUGLAS COUNTY OREGON

CORNER DESIGNATION

West 1/4 Corner
Section 30 Only

- Condition Report Only
- Not Found
- Renewed
- Unrecorded
- Surveyed In
- Referenced Out

Previous Renewals/Surveys, etc. Original G.L.O. Survey by William P. Wright in 1883-1884. Dependent Resurvey by Thomas Tillman in 1950 and a Dependent Resurvey by Thomas Tillman and Joseph Gawron in 1953-1954.

Monument(s) & Accessories Found: (Condition and Source)

Found 1950 G.L.O. Brass Cap set firmly in the ground and marked "W.C. S 1/4 S 30". True corner bears N1° 27' E, 7.26 feet. At true corner point I find a 14" rotted fir stub, No marks visible.

Set, 8" Fir, N76°E, 5.4' (Scribed "W.C. 1/4 S B.T.")

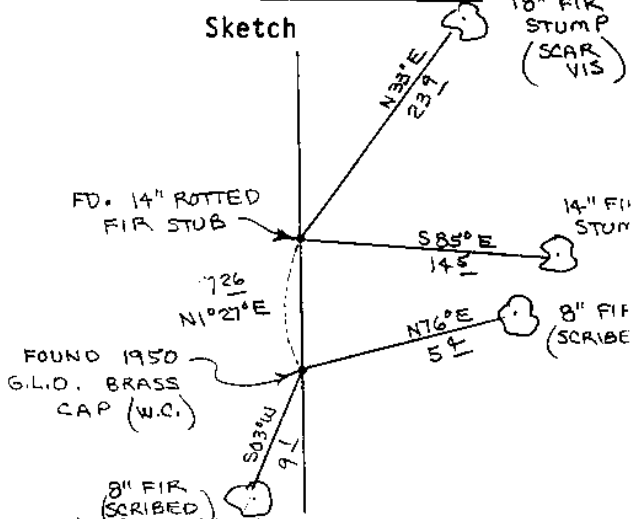
8" Fir, S03°W, 9.1' (Scribed "W.C. 1/4 S B.T.")

Also found 2 bearing trees for true 1/4 corner;

14" Fir Stump, S85°E, 14.5' (No Marks), 1883 BT. Rec. S85 1/2°E, 13.9'

18" Fir Stump, N33°E, 23.9' (Scar Vis), 1950 BT. Rec. N33°E, 25.7'

Monument Detail



Monument Set (Procedures and Description)

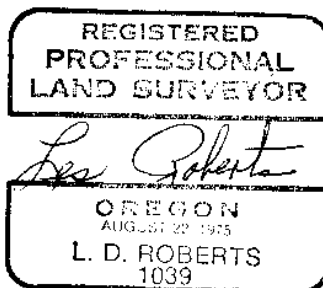
Set 72" aluminum post, with land survey monument sign attached to, beside brass cap. Painted all bearing trees red.

New Accessories

Location & Comments

Surveyor's Seal

Compass Declination 20 1/2
 Firm/Agency Roberts
Surveying Inc.
 Address 29 West 29th St.
Eugene, Oregon 97405
 Party Chief Ted Baker
 Notes _____
 Witness Stuart Duce



EXPIRES 12/31/94

J.S. File No. 63/149-11A

T20- R2 116-60-15
T20- R2 REN. NO. 68

M 116-60

FILED *sc*

OREGON CORNER RESTORATION FORM

Section 30 Township 20S Range 8W

MAR 29 1993

County Douglas Date 03-10-93

COUNTY SURVEYOR
DOUGLAS COUNTY, ORE.

CORNER DESIGNATION

North 1/4 Corner
Section 30

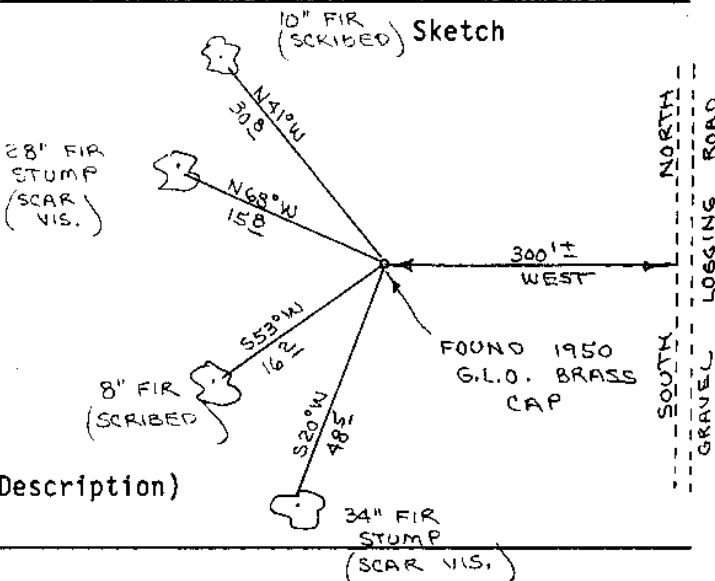
- Condition Report Only
- Not Found
- Renewed
- Unrecorded
- Surveyed In
- Referenced Out

Previous Renewals/Surveys, etc. Original G.L.O. Survey by William P. Wright in 1883-1884. Dependent Resurvey by Thomas Tillman in 1950 and a Dependent Resurvey by Thomas Tillman and Joseph Gawron in 1953-1954.

Monument(s) & Accessories Found: (Condition and Source)

Found 1950 G.L.O. Brass Cap set firmly in the ground.
28" Fir Stump, N68W, 15.8' (Scar Vis.), 1950 BT. Record N68°3/4W, 15.8'
34" Fir Stump, S20W, 48.5' (Scar Vis.), 1954 BT. Record S19°3/4W, 48.5'

Monument Detail



Monument Set (Procedures and Description)

New Accessories

8" Fir, S53W, 16.2' (Scribed/Painted Red)
10" Fir, N41W, 30.8' (Scribed/Painted Red)
Set 72" aluminum post, with land survey sign attached to, beside brass cap.

Location & Comments

Corner lies on West slope about 300' West of gravel logging road
Compass Declination 20 1/2
Firm/Agency Roberts Surveying Inc.
Address 29 West 29th St. Eugene, Oregon 97405
Party Chief Ted Baker
Notes _____
Witness Stuart Duce

Surveyor's Seal



EXPIRES 12/31/94

C.S. File No. 63/149-11B

REN. # 27

OREGON CORNER RESTORATION FORM

MAR 29 1993

Section 30 Township 20S Range 8W

COUNTY SURVEYOR
DOUGLAS COUNTY, ORE.

County Douglas Date 03-09-93

CORNER DESIGNATION

N.W. Corner
Section 30

- Condition Report Only
- Not Found
- Renewed
- Unrecorded
- Surveyed In
- Referenced Out

Previous Renewals/Surveys, etc. Original G.L.O. Survey by William P. Wright in 1883-1884. Dependent Resurvey by Thomas Tillman in 1950 and a Dependent Resurvey by Thomas Tillman and Joseph Gawron in 1953-1954.

Monument(s) & Accessories Found: (Condition and Source)

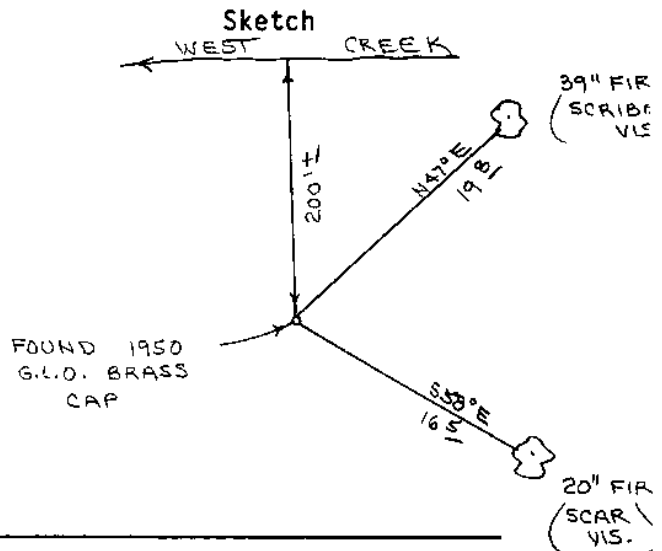
Found 1950 G.L.O. Brass Cap set firmly in the ground.

20" Fir, S58E, 16.5' (Scar Vis.) , 1950 BT. Record S58E , 16.5'

39" Fir, N47E, 19.8' (Scribe Vis.), 1950 BT. Record N47½E, 19.8'

Set 72" aluminum post, with land monument survey sign attached to, beside brass cap. Painted all bearing trees red.

Monument Detail



Monument Set (Procedures and Description)

New Accessories

Location & Comments

Corner lies on West slope about 200' South of creek. Creek flows West

Compass Declination 20½

Firm/Agency Roberts Surveying, Inc.

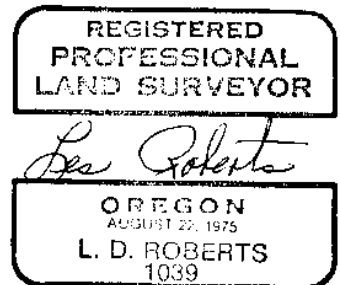
Address 29 West 29th St. Eugene, Oregon 97405

Party Chief Ted Baker

Notes _____

Witness Stuart Duce.

Surveyor's Seal



EXPIRES 12/31/94
C.S. File No. 63/149-110

X

20 15 REN. # 28

20 29 REN. # 70

M 116-60

FILED JC

OREGON CORNER RESTORATION FORM

MAR 29 1993

Section 25 Township 20S Range 9W

County Douglas Date 03-08-93

COUNTY SURVEYOR
DOUGLAS COUNTY, ORE.

CORNER DESIGNATION

East 1/4 Corner
Section 25 Only

- Condition Report Only
- Not Found
- Renewed
- Unrecorded
- Surveyed In
- Referenced Out

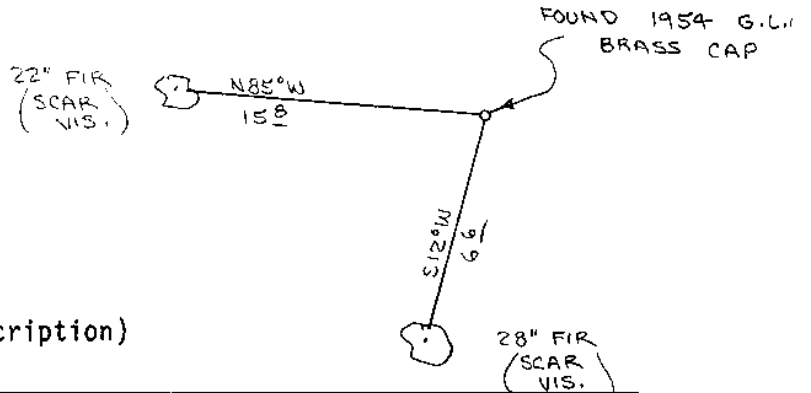
Previous Renewals/Surveys, etc. Original G.L.O. Survey by William P. Wright in 1883-1884. Dependent Resurvey by Thomas Tillman in 1950 and a Dependent Resurvey by Thomas Tillman and Joseph Gawron in 1953-1954.

Monument(s) & Accessories Found: (Condition and Source)

Found 1954 G.L.O. Brass Cap set firmly in the ground.
22" Fir, N85W, 15.8' (Scar Vis.), 1954 BT. Record N85 3/4W, 15.8'
28" Fir, S12W, 6.6' (Scar Vis.), 1954 BT. Record S13W, 6.6'
Set 72" aluminum post, with land monument survey sign attached to, beside brass cap. Painted all bearing trees red.

Monument Detail

Sketch



Monument Set (Procedures and Description)

New Accessories

Location & Comments

Corner lies on West slope about 50' South of the N.W. corner of Section 30. Compass Declination 20 1/2
Firm/Agency Roberts
Surveying Inc.
Address 29 West 29th St.
Eugene, Oregon 97405
Party Chief Ted Baker
Notes
Witness Stuart Duce

Surveyor's Seal



EXPIRES 12/31/94

C.S. File No. 63/149-11D

X
T2025 ACN. # 26
T2025 PEN. # 69