

SURVEY ALONG THE EAST LINE OF SECTION 13, T.24 S., R.7 W., W.M. LOCATED IN THE S. 1/2 OF SECTION 13, T.24 S., R.7 W., W.M., COUNTY SURVEYORS FILE DATA DOUGLAS COUNTY, OREGON DO NOT REMOVE FROM OFFICE

AFFIDAVIT OF CORRECTION
COUNTY CLERK'S RECORDS INST. #94-01860
JAN. 28, 1994 CS 63/155

FOR: ~~CECIL PAYNE~~
MARY LOU BISHOP

BY: ROBERT L. DOLAN
3614 NONPARIEL RD.
SUTHERLIN, OR. 97479

DATE: DECEMBER 1992

SCALE: 1" = 200'

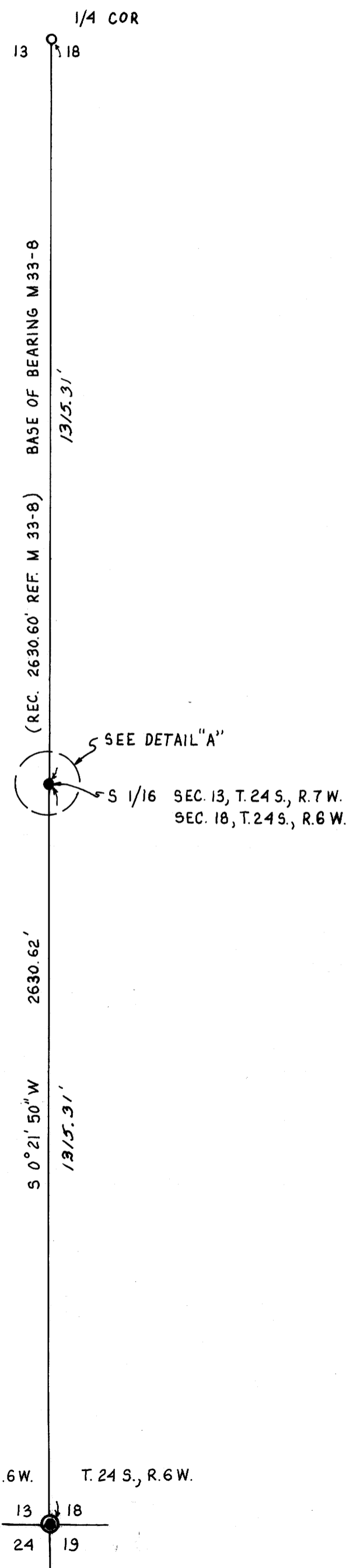
Legend:

- ⊙ FD. BRASS CAP, D.C.S.O. 1959
SECTION COR. SEC. 18 T.24 S., R.6 W.
13 | 18 SEC. 13 T.24 S., R.7 W.
24 | 19
T.24 S. T.24 S.
R.7 W. R.6 W.
- FD. 5/8" IRON ROD, 1/4 COR. SEC. 13/18
SEC. 13, T.24 S., R.7 W.
SEC. 18, T.24 S., R.6 W.
- SET 5/8" x 30" IRON ROD W/CAP (L.S. 079)
- △ SCRIBED BEARING TREE AS SHOWN

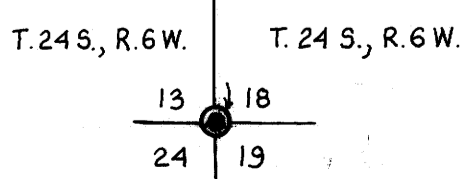
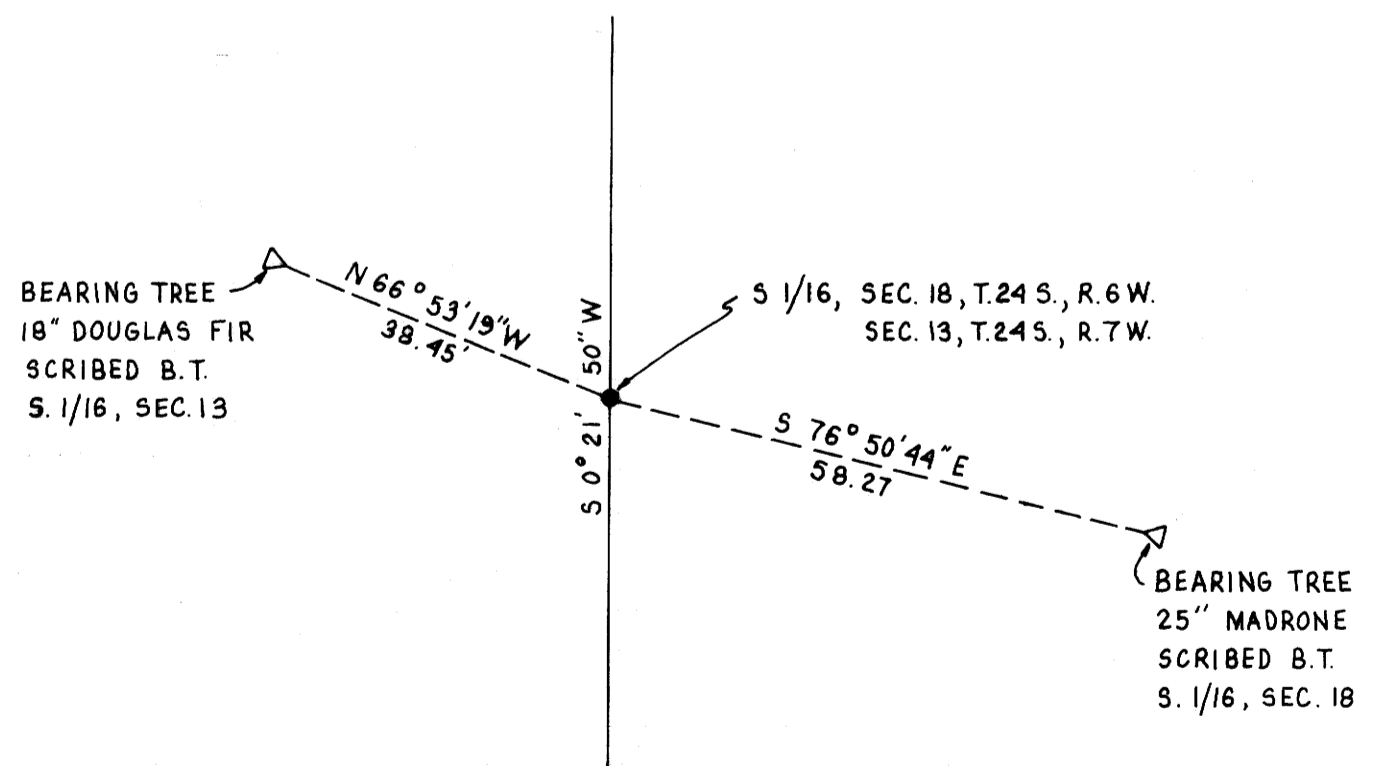
NARRATIVE

SURVEY TO ESTABLISH THE S 1/16 OF SECTION 13, T.24 S., R.7 W. AND SECTION 18, T.24 S., R.6 W., W.M. CORNER SET AT SINGLE PROPORTIONATE MEASUREMENT FROM FOUND MONUMENTS.

INSTRUMENTS - THEODOLITE & DISTANCE METER



DETAIL "A"
NO SCALE



REGISTERED
PROFESSIONAL
LAND SURVEYOR

Robert L. Dolan 8.2.1993
OREGON
July 30, 1976
ROBERT L. DOLAN
1076