

63 149  
M 116-29

SEE M 154-40

# SURVEY FOR U.S. NATIONAL BANK OF OREGON

S.W. 1/4 & N.E. 1/4,  
SEC. 25, T.22S., R.6W., W.M.

DOUGLAS COUNTY, OREGON

NOVEMBER 25, 1992

SCALE 1"=500'

### NARRATIVE

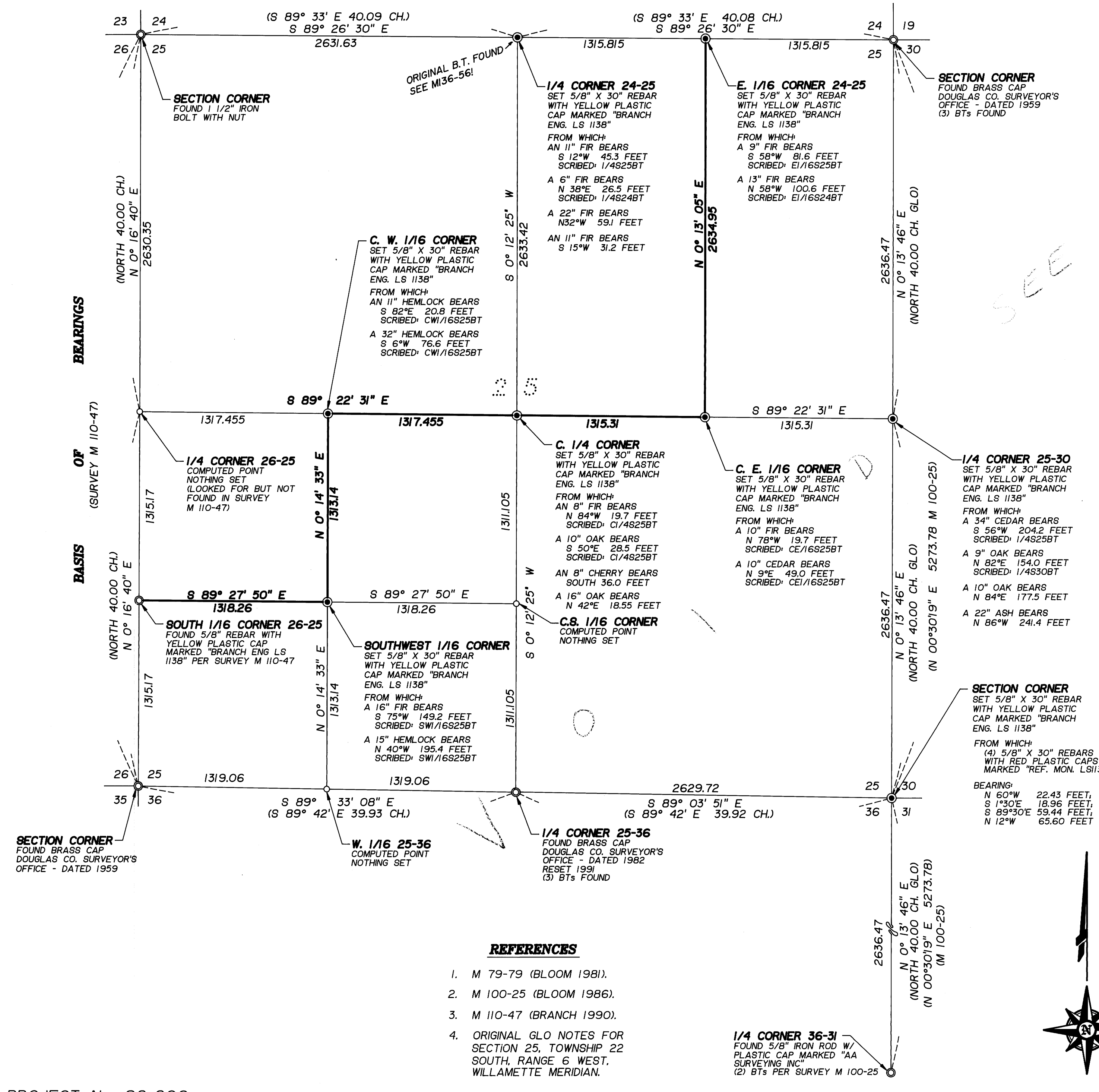
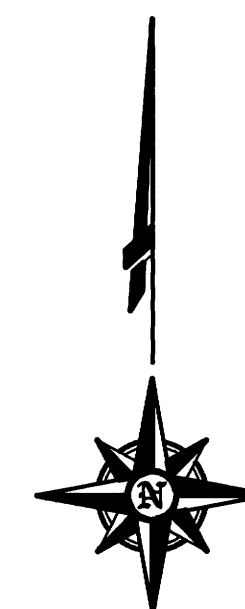
THE PURPOSE OF THIS SURVEY WAS TO ESTABLISH THE PROPERTY BOUNDARY OF LAND MANAGED BY U.S. NATIONAL BANK OF OREGON. TO DO THIS IT WAS NECESSARY TO SUBDIVIDE SECTION 25. IN 1990 I HAD SUBDIVIDED SECTION 26 AND HAD NOT FOUND THE QUARTER CORNER BETWEEN SECTIONS 26 AND 25 BUT HAD COMPUTED ITS POSITION BY PROPORTIONMENT (SEE SURVEY \*M110-47). A THOROUGH SEARCH WAS MADE FOR THE NORTH AND EAST QUARTER CORNERS AND THE SOUTHEAST SECTION CORNER OF SECTION 25. NO EVIDENCE OF ANY OF THESE CORNERS WAS FOUND. THE CORNERS WERE REESTABLISHED BY PROPORTIONMENT BETWEEN THE FOUND CORNERS. I ACCEPTED THE EAST QUARTER CORNER OF SECTION 36 AS REESTABLISHED BY BLOOM (ALSO DONE BY PROPORTIONMENT) AS THE DISTANCE I FOUND BETWEEN IT AND THE NORTHEAST CORNER OF SECTION 25 AGREED REASONABLY WELL WITH HIS WORK. THE BASIS OF BEARING WAS THE PREVIOUS WORK DONE BY BRANCH ENGINEERING IN THE SUBDIVISION OF SECTION 26.

REGISTERED  
PROFESSIONAL  
LAND SURVEYOR

*James A. Branch*  
OREGON  
SEPT. 23, 1977  
JAMES A. BRANCH  
1138

EXPIRES DEC. 31, 1993

**Branch Engineering**  
310 N. 5th STREET  
Springfield, Oregon 97477  
(503)746-0837 FAX (503)746-0389



### REFERENCES

- M 79-79 (BLOOM 1981).
- M 100-25 (BLOOM 1986).
- M 110-47 (BRANCH 1990).
- ORIGINAL GLO NOTES FOR SECTION 25, TOWNSHIP 22 SOUTH, RANGE 6 WEST, WILLAMETTE MERIDIAN.

63 149  
M 116-29