

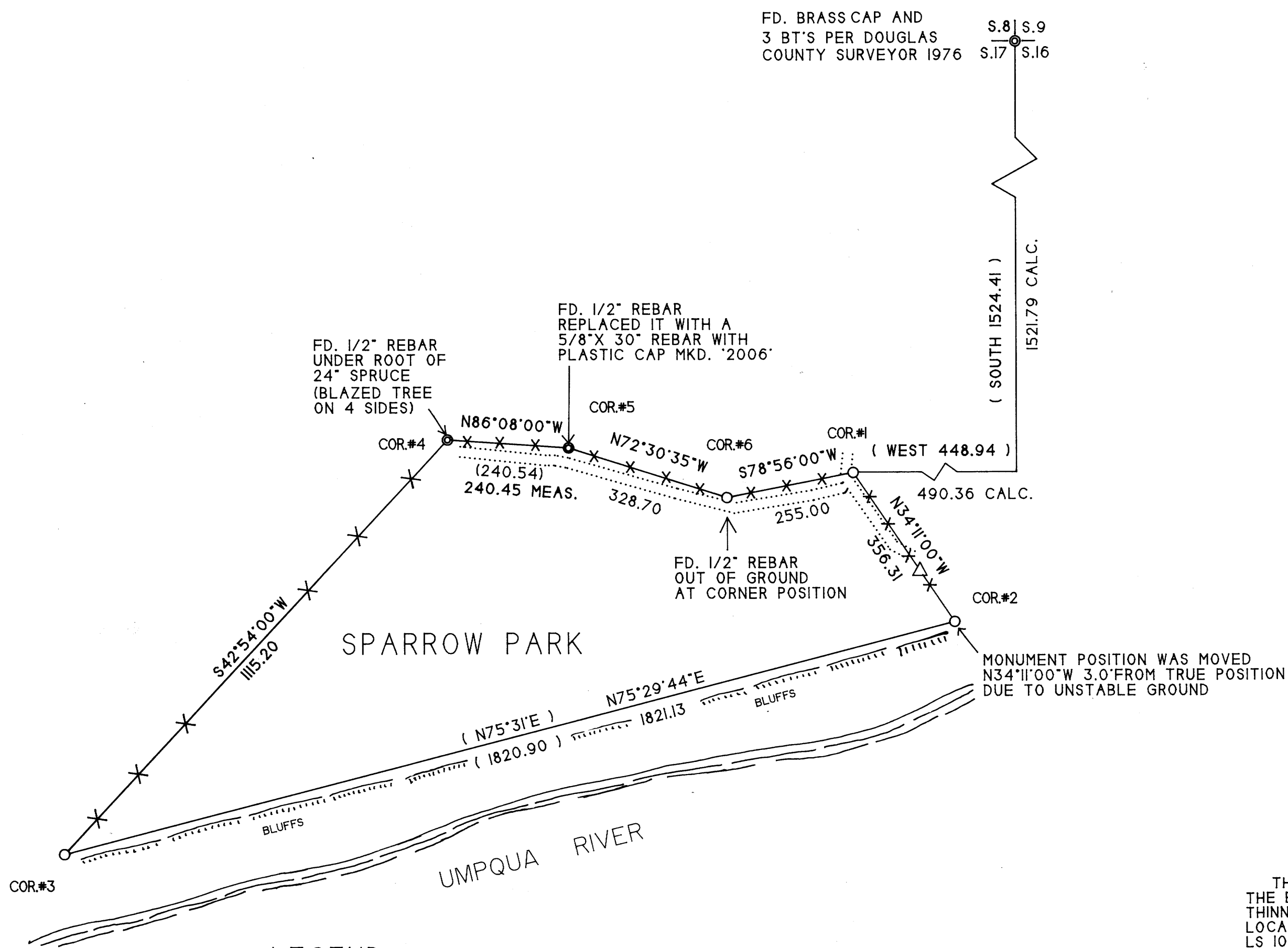
RECORD OF SURVEY - SPARROW CO. PARK  
NE 1/4. SEC.17. T.21 S.. R.12 W.. W.M.. DOUGLAS CO.. OR.

FILED  
DEC 14 1992  
COUNTY SURVEYOR  
DOUGLAS COUNTY, OREGON

BASIS OF BEARING - ASSUMED FROM FOUND CORNERS 4 AND 5  
ADJUSTMENT TO SOLAR BEARING - 1°23'37" RIGHT

SURVEY FOR:  
PORT BLAKELY TREE FARMS, L.P.  
500 UNION STREET, SUITE 830  
SEATTLE, WA. 98101

SURVEY BY:  
CLYDE F. MULKINS  
TIMBER CRUISING AND ENGINEERING  
P.O. BOX 750  
COOS BAY, OR. 97420



REGISTERED PROFESSIONAL LAND SURVEYOR  
*Clyde F. Mulkins*  
OREGON  
JULY 10 1982  
CLYDE F. MULKINS  
2008

LEGEND

- ⊙ FOUND CORNER
- SET 5/8" X 30" REBAR AND PLASTIC CAP MKD. "LS2006"
- XXX LINE MARKED WITH RED PAINTED BLAZES AND RED RIBBONS
- ( ) RECORD BEARINGS & DISTANCES PER CS FILE 51/3 & MAP FILE M14-4
- △ STEEL FENCE POST ON LINE 209 FT. FROM CORNER NO.1
- ROAD

NOTE: SET STEEL FENCE POST 1 FOOT FROM CORNERS 1 THRU 6

SCALE 1" = 200'  
NOVEMBER 30, 1992

NARRATIVE

THE PURPOSE OF THIS SURVEY WAS TO LOCATE AND/OR REESTABLISH THE BOUNDARIES OF SPARROW PARK, DOUGLAS CO. PARKS, FOR COMMERCIAL THINNING LOGGING OPERATIONS AND TO DETERMINE TIMBER TRESPASS LOCATIONS. ASSISTING ME WITH THIS SURVEY WERE FLOYD VANDERVELDEN, LS 1047 AND TROY RAMBO. THE FIELD WORK WAS PERFORMED BETWEEN NOV. 18 AND 24, 1992. A TOPCON GTS-301 TOTAL STATION WAS USED FOR TRAVERSING. ALL SURVEY COMPUTATIONS WERE MADE USING TRAVERSE PC SOFTWARE.

CONTROL FOR THIS SURVEY WAS MAP FILE M14-4, CS FILE 51/3 AND CORNER RENEWAL 54, T.21 S., R.12 W., W.M. OF DOUGLAS CO. SURVEYORS RECORDS. THE RECORD BEARING COURSES AROUND SPARROW PARK DO NOT CLOSE BY AN ERROR OF BEARING S 4 09'33"W AND DISTANCE 0.71 FT. FROM THE ENDING POINT TO THE TRUE POINT OF BEGINNING (CORNER NO.1). THIS IS ASSUMED TO BE AN OFFICE CALCULATION ERROR FROM THE RECORD SURVEY. CORNERS NO. 1, 2, 3, AND 6 WERE REESTABLISHED BASED ON FOUND CORNERS NO. 4 AND 5 AND PLAT BEARINGS AND DISTANCES. A 1/2" X 18" REBAR WAS FOUND LYING HORIZONTAL AND BURIED BESIDE THE POSITION OF THE REESTABLISHED CORNER NO.6. THE ERROR REMAINS UNRECONCILED BETWEEN CORNERS NO. 2 AND 3. I FOUND A DIFFERENCE IN MEASUREMENT BETWEEN CORNER NO.1 AND THE CORNER OF SECTIONS 8.9.16 AND 17. AS SHOWN, I ACCEPTED THE FOUND CORNER MONUMENTS AS REPRESENTING THE INTENT OF THE DEED CONVEYANCE, ALTHOUGH NOT SPECIFICALLY CALLED IN THE MAP LEGEND OR NARRATIVE.

MAP FILE M14-4 - 21