

PROPERTY SURVEY FOR MENASHA CORPORATION

COUNTY SURVEYORS FILE DATA
DO NOT REMOVE FROM OFFICE

LOCATED IN EAST HALF SEC. 30, T. 22S., R. 12W., W.M.

NARRATIVE

THE PURPOSE OF THIS SURVEY WAS TO ESTABLISH MENASHA'S PROPERTY LINES AND CORNERS IN THE EAST HALF OF SECTION 30. CONTROL FOR THIS SURVEY WAS BASED ON A 1989 SURVEY BY HARVEY WILCOX IN SECTION 31 (M109-50); A 1961 SURVEY BY ARTHUR BOYER (M20-69); A 1973 REMONUMENTATION OF THE EASTERLY MEANDER CORNER ON THE NORTH LINE SEC. 30 (RENEWED COR. 107); AND G.L.O. SURVEYS BY GORDON 1857 AND CATHCART 1890. PROCEDURE FOLLOWED WAS TO LOCATE KNOWN FOUND CONTROL CORNERS OF RECORD, THEN USING APPROXIMATE COORDINATES SUPPLIED BY DOUGLAS CO. SURVEYORS OFFICE AS SEARCH COORDINATES, TRAVERSE TO NON-FOUND CONTROL CORNERS, BY USING THIS PROCEDURE I WAS ABLE TO RECOVER THE GLO NE SECTION CORNER AND THE GLO EAST 1/4 CORNER OF SECTION 30. NO EVIDENCE OF THE N 1/4 COULD BE FOUND SO THIS CORNER WAS PROPORTIONED BETWEEN THE FOUND GLO NE SECTION CORNER AND FOUND GLO MEANDER CORNER AS PER SECTION 5-36 1973 BLM MANUAL OF INSTRUCTIONS. ONCE ALL THE APPROPRIATE CONTROL CORNERS WERE TIED, I PROCEEDED TO SUBDIVIDE THE SECTION IN ACCORDANCE WITH THE 1973 BLM MANUAL OF INSTRUCTIONS. ALL TRAVERSES WERE CLOSED LOOPS. EQUIPMENT USED WAS A NIKON DTM AS TOTAL STATION, TRAVERSE PC VERSION 2.14 AND GENERIC CADD VERSION 6 WERE USED TO CALCULATE AND PLAT THE SURVEY. TRUE LINE WAS MARKED BY OFFSETS FROM RANDOM TRAVERSE POINTS. BEARINGS TO BEARING TREES WERE TAKEN WITH A SILVA RANGER HAND COMPASS. ALL BEARINGS AND DISTANCES TO BEARING TREES ESTABLISHED THIS SURVEY WERE TAKEN TO A SPIKE IN BASE OF TREE. BASIS OF BEARING WAS THE LINE FROM THE SOUTHEAST CORNER SECTION 30 TO THE EAST 1/16 BETWEEN SECTIONS 30 AND 31 AS SURVEYED BY HARVEY WILCOX (M109-50) WHICH WAS BASED ON SOLAR OBSERVATION.



SCALE: 1" = 400'
NOVEMBER 1992
MAG. DEC. 20° EAST

CORNER NOTES

- ① FD. DOWN 36" OF SNAG WITH ORIG. SCRIBE VIS. I REMON. THIS CORNER WITH 1"X 36" IP WITH 2" BC STAMPED T22SR12W S19 S20 S29 S30 1992 LS2052. BCIP SET AT RECORD S70°E 19.8' FROM FACE WHERE IT WOULD HAVE BEEN IF IT WERE STILL STANDING.
MARKED NEW BTS. : 15" ALDER N60°E 21.3' BARK SCRIBED T22SR12WS20BT
30" SPRUCE S39°W 26.8' SCRIBED T22SR12WS30BT
31" SPRUCE S48°E 56.3' SCRIBED T22SR12WS29BT
18" ALDER N29°W 5.6' BARK SCRIBED T22SR12WS19BT
- ② FD. BOTH ORIG. BTS. BY CATHCART: VERY ROTTEN SPRUCE STUMP FORMERLY 50" WITH SCRIBE VIS. N75°E 65 LKS. (42.9') AND VERY ROTTEN SPRUCE STUMP FORMERLY 60" WITH SCRIBE VIS. N86°E 33 LKS. (21.8'). I REMON. THIS CORNER WITH A 1"X36" IP WITH 2" BC STAMPED T22SR12W 1/4 S30 S29 1992 LS2052. BCIP SET AT DISTANCE INTERSECT FROM FACES OF ORIG. BTS.
MARKED NEW BTS. : 30" SPRUCE S32°E 7.3' SCRIBED 1/4 S29 BT
26" D. FIR N32°E 15.6' SCRIBED 1/4 S29 BT
29" CEDAR N01°W 54.1' SCRIBED 1/4 S30 BT
28" SPRUCE N39°W 49.4' SCRIBED 1/4 S30 BT
- ③ FD. 2" ALUM CAP ON IR AS PER WILCOX SURVEY M109-50.
FD. BTS. : 16" ALDER N52°W 18.7' BARK SCRIBED
20" D. FIR N19°E 25.9'
22" D. FIR S69°E 17.7'
24" D. FIR S44°W 22.0'
- ④ FD. 2" ALUM CAP ON IR AS PER WILCOX SURVEY M109-50.
FD. BTS. : 40" D. FIR S39°E 33.9'
15" SPRUCE N42°E 19.8' (DOWN)
MARKED NEW BT. : 27" D. FIR N31°W 49.5'
- ⑤ FD. 2" ALUM CAP ON IR AS PER WILCOX SURVEY M109-50.
FD. BTS. : 15" SPRUCE (FORMERLY ALDER) N75°W 20.3'
26" SPRUCE S11°E 73.7'
- ⑥ FD. 3" BLM BCIP AS PER 1982 BLM SURVEY.
FD. BTS. : 7" D. FIR SNAG N61°E 21.3'
11" D. FIR N42 1/2°E 27.2'
THIS COR. ALSO CALLED FOR IN DOUGLAS CO. RENEWED MON. #13 AND M20-69
- ⑦ FD. 3/4" IP AS PER DOUGLAS CO. FILE #56/35
FD. BTS. : 22" CEDAR S57°E 11.9' SCRIBE VIS.
45" D. FIR STUMP N14°W 19.8' SCRIBE VIS.

REGISTERED
PROFESSIONAL
LAND SURVEYOR

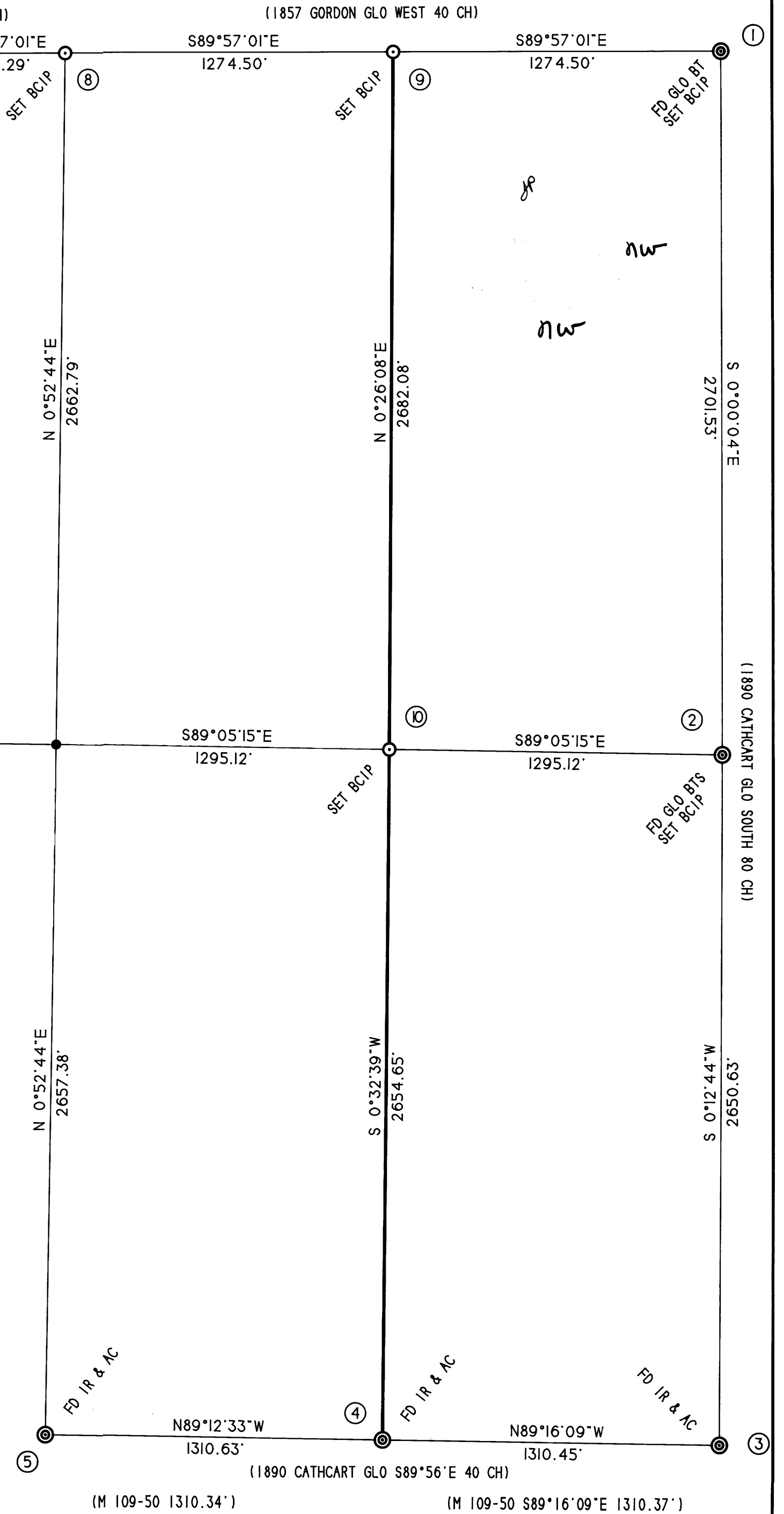
John Minor

OREGON
JULY 15, 1923
JOHN MINOR
#2952

SURVEYED BY: JOHN MINOR LS 2052
P.O. BOX 588
NORTH BEND OR 97459

LEGEND

- SURVEYED LINES
- PAINTED & BLAZED LINES
- FOUND CORNERS
- CORNERS SET
- CALCULATED CORNERS



MAP FILE M116 - 11

MAP FILE M116 - 11