

RECORDERS FILE DATA
 REMOVE FROM OFFICE

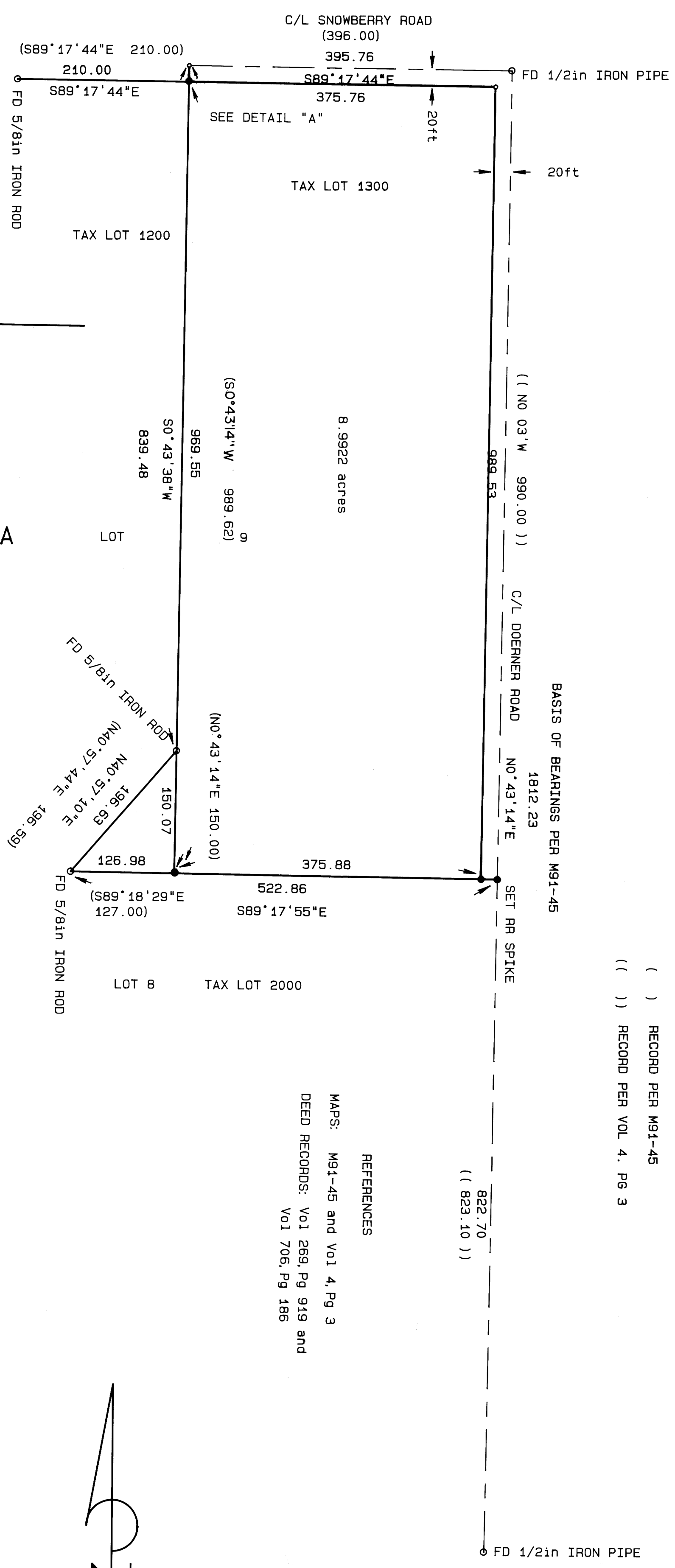
PROPERTY SURVEY
 IN LOT 9, DOERNERS ADDITION TO EDEN ORCHARDS,
 NW 1/4, SEC 10, T27S, R7W, WM, DOUGLAS COUNTY, OREGON

FOR TERRILL WILSON
 14 OCT 1992

NARRATIVE

The purpose of this survey is to monument the boundary lines of a portion of Lot 9, Doerner's Addition as described in Volume 706, Page 186 of the Deed Records of Douglas County.
 The Southeast corner of Lot 9 was established at proportional distance between the found monuments at the Northeast corner of Lot 9 and the Southeast Corner of Lot 8. The Southwest Corner was established by intersecting the bearings of the West boundary from the Northwest corner and the found monument per M91-45, and the South line of Lot 9. The Northwest corner was established at Record Distance from the found monument per M91-45 on the South Right-of-Way line of Snowberry Road.
 Basis of bearings is center line of Doerner Road see M91-45.

- LEGEND
- FOUND AS NOTED
 - SET 5/8in X 30in IRON ROD WITH PLASTIC CAP MARKED A A SURVEYING
 - CALCULATED POINT
 - () RECORD PER M91-45
 - (()) RECORD PER VOL 4, PG 3



DETAIL A

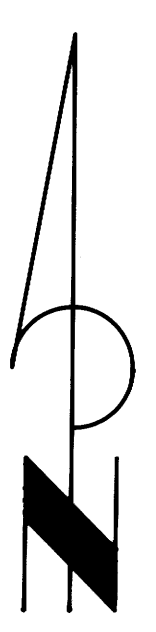
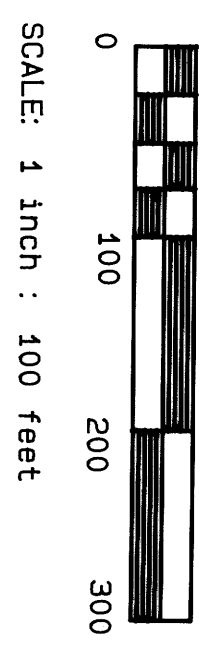
LINE	DISTANCE
L1	1.00

REFERENCES

MAPS: M91-45 and Vol 4, Pg 3
 DEED RECORDS: Vol 269, Pg 919 and Vol 706, Pg 186

REGISTERED PROFESSIONAL LAND SURVEYOR

Mark A. Heimbürger
 OREGON JULY 16, 1987
 MARK A. HEIMBURGER 2287



AA SURVEYING SERVICE, INC. - P.O. Box 130 - 2566 N. Stephens Street - Roseburg, Oregon 97470 - Tel. (503) 672-2096

M115-79