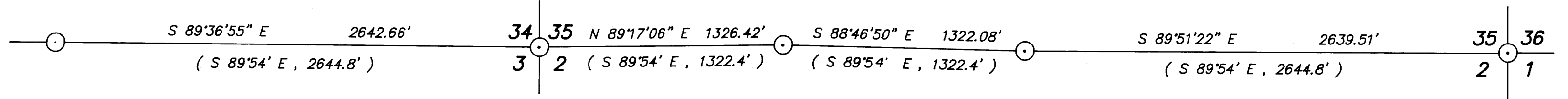


78
VX
AW

M115-78

WEST 1/16 CORNER 35 & 2
FOUND : HAINES "T" BAR WITH BRASS DISK

1/4 CORNER 35 & 2
FOUND : HAINES "T" BAR WITH BRASS DISK



1/4 CORNER 34 & 3.
FOUND : 2" IRON PIPE WITH BRASS CAP
DATED 1988

SECTION CORNER 34, 35, 2, 3
FOUND : 1-1/4" IRON PIPE WITH DOUGLAS COUNTY
BRASS CAP DATED 1981

SECTION CORNER 35, 36, 1, 2
FOUND : 1-1/4" IRON PIPE WITH DOUGLAS COUNTY
BRASS CAP DATED 1991

**BASIS OF BEARING : SOLAR OBSERVATION
AS PER C.S. M106-59**

SCALE : 1" = 500'

- NARRATIVE -

THIS SURVEY WAS MADE IN JULY OF 1992 BY DONALD L. PEEL OF PEEL BAKER LAND SURVEYING, INC., 1385 OAK ST. - SUITE 3 EUGENE, OREGON. THE PURPOSE OF THIS SURVEY WAS TO SHOW THAT THE WEST 1/16 CORNER BETWEEN SECTIONS 35 AND 2 WAS SET OUT OF POSITION. THE 1/4 CORNER 35 & 2, THE WEST 1/16 CORNER 35 & 2 AND THE SECTION CORNER 34, 35, 2, 3 WERE ALL SET BY WILFORD HAINES IN C.S. NO. M22-6. ACCORDING TO THE HAINES PLAT, THE BEARING BETWEEN ALL CORNERS WAS S 89°54' E, ie. ALL CORNERS WERE ON A STRAIGHT LINE. MY RETRACEMENT OF THE HAINES SURVEY SHOWS THAT IF ONE IGNORES THE WEST 1/16 CORNER 35 & 2, A SLIGHT BEARING DEFLECTION IN THE SAME DIRECTION EXISTS AT EACH 1/2 MILE SEGMENT OF THE LINE. HOWEVER, A MAJOR BEARING DEFLECTION EXISTS TO AND FROM THE WEST 1/16 CORNER. I FIND THE HAINES 1/16 CORNER TO BE OUT OF POSITION (FROM A STRAIGHT LINE BETWEEN THE SOUTH 1/4 CORNER AND THE SOUTHWEST SECTION CORNER) BY 22.35 FEET.



⊙ CORNERS FOUND
() RECORD DATA, C.S. M22-6

REGISTERED
PROFESSIONAL
LAND SURVEYOR
Donald L. Peel
OREGON
JULY 5, 1966
DONALD L. PEEL
752

**SURVEY IN
SECTIONS 34 & 35, T22S, R4W, W.M.
LANE & DOUGLAS COUNTIES, OREGON**
FOR
WEYERHAEUSER COMPANY
BY
PEEL BAKER LAND SURVEYING, INC.
1385 OAK ST. - SUITE 3, EUGENE, OREGON
OCTOBER 1, 1992

DO NOT REMOVE FROM OFFICE

MAP FILE M115-78