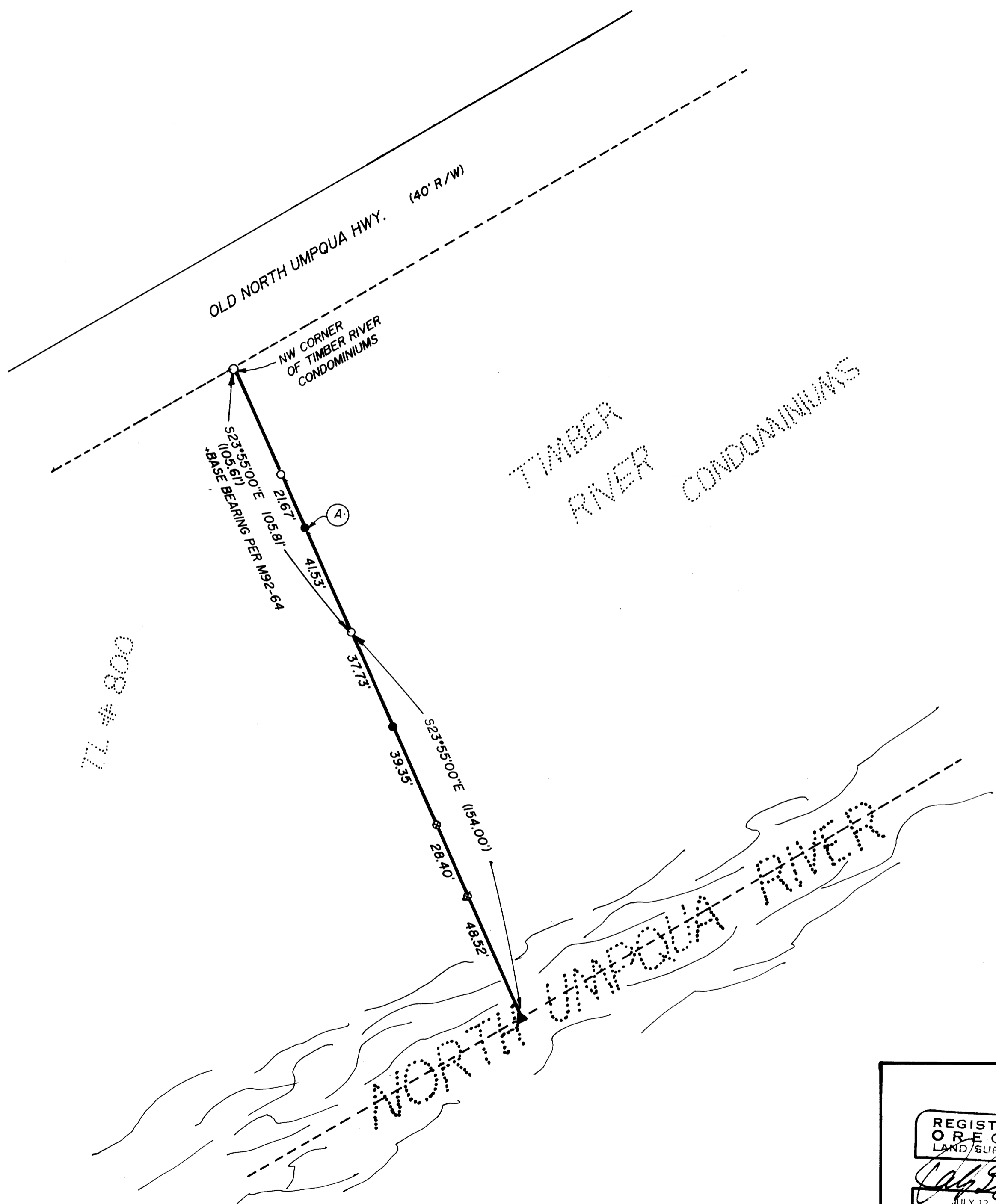
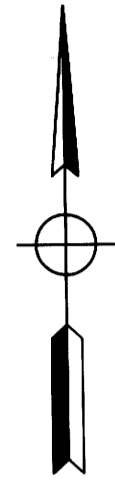


MAP FILE M115 - 74

FILED  
OCT 26 1992  
COUNTY SURVEYOR  
DOUGLAS COUNTY, ORE  
NW



NARRATIVE:  
 SURVEY TO ESTABLISH ADDITIONAL MONUMENTATION ON WEST LINE OF TIMBER RIVER CONDOMINIUMS. SET MONUMENT A ON LINE BETWEEN EXISTING MONUMENTS. SET ADDITIONAL MONUMENTS BY PROJECTING LINE USING FOUND MONUMENTS.  
 FIELD CREW: MARC HOLT, ROD McCALLISTER  
 OFFICE: JOEL FRASIEUR  
 EQUIPMENT: LIETZ SET 4 TOTAL STATION  
 DRAFTING: KEN VANGORDON  
 MAPS OF REFERENCE: M92-64

- LEGEND:
- FD. 5/8" I.R.
  - SET 5/8" X 30" \* I.R. W/CAP MARKED "i.e. ENGINEERING"
  - ⊗ SET "X" IN ROCK
  - ▲ COMPUTED POINT
  - ( ) RECORD PER M92-64

77 # 800

REGISTERED <b>OREGON</b> LAND SURVEYOR  JULY 12, 1968 DONALD A. BENTZ 839				SURVEY IN THE NE 1/4 OF SECTION 11, TOWNSHIP 26 S, RANGE 3 W, W.M., DOUGLAS COUNTY, OREGON			
SURVEYED FOR: VERN LIESINGER 520 BUELL LN. ROSEBURG, OREGON 97470 (503) 679-9559		SURVEYED BY: i.e. ENGINEERING 1205 SE COURT ROSEBURG, OREGON 97470 (503) 673-0166					
SCALE: 1"=30'	DATE: OCT 1992	451-01	PAGE 1 OF 1				

COUNTY SURVEYORS FILE DATA  
DO NOT REMOVE FROM OFFICE

MAP FILE M115 - 74