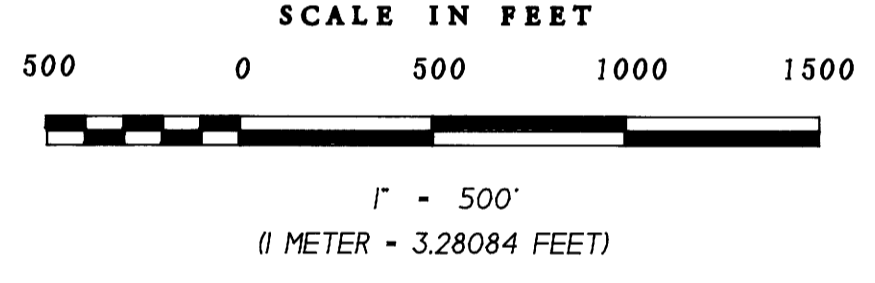


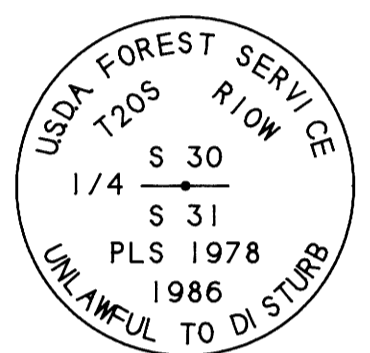
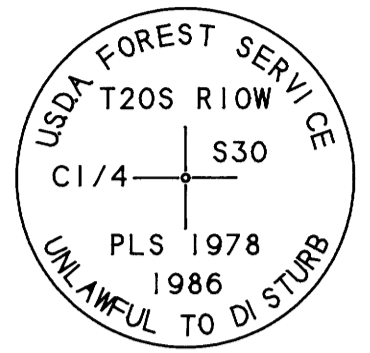
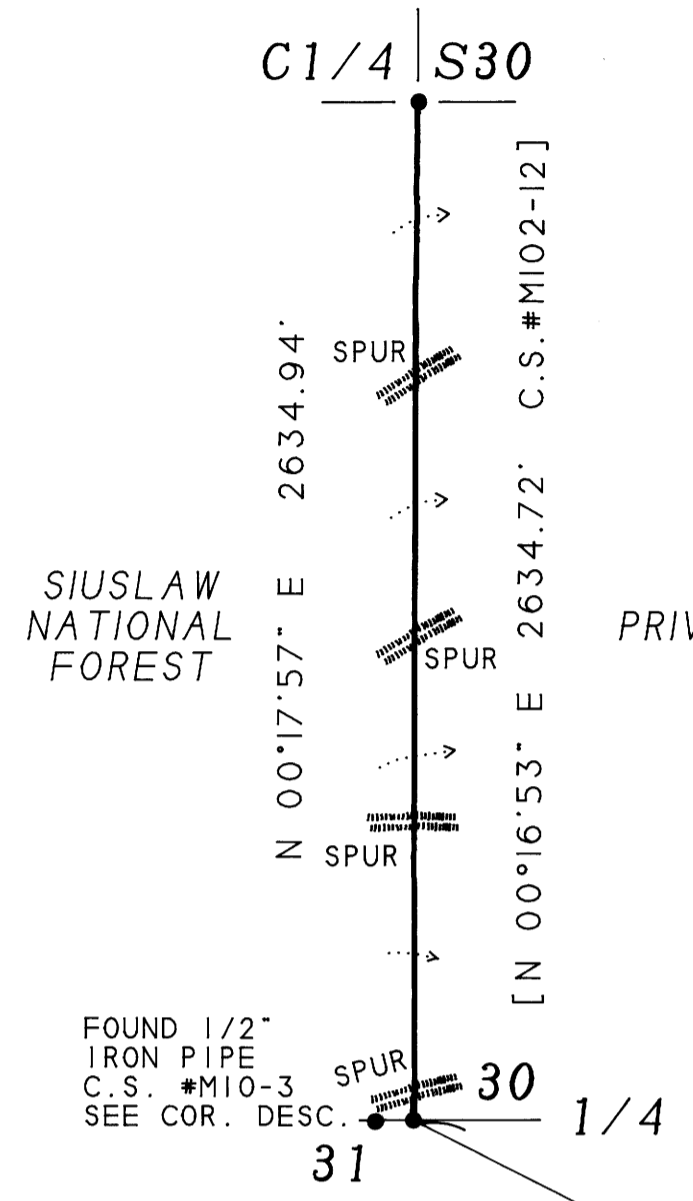
BASIS OF BEARING: ASTRONOMICAL BY SOLAR OBSERVATION



LEGEND

- CORNER MONUMENT FOUND
A... INTERMITTENT STREAM
— LINE POSTED WITH FIBERGLASS POSTS

EXAMINED AND ACCEPTED FOR THE U.S. FOREST SERVICE THIS 14th DAY OF OCTOBER, 1992. Signature: Randall M. Zanon, C.O.R. I CERTIFY THAT THIS SURVEY WAS PERFORMED AT THE REQUEST OF THE SIUSLAW NATIONAL FOREST SUPERVISOR. Signature: Tony Vander Blaik, 10/14/92 DATE



C 1/4 SECTION 30 Found: USFS 2&1/2" aluminum pipe firmly set 3" above ground with 3" aluminum cap marked as shown.

From which: 14" hemlock bears S 87° E. 26.9'; with "C1/4S30 B" and 3/4" brass "PLS 1978" washer visible in partially healed blaze (C.S. #M102-12); 21" cedar bears N 4&1/4° W. 51.0', with "C1/4S30 BT" and brass "PLS 1978" washer visible in partially healed blaze (C.S. #M102-12); Reference monument, standard USFS 2&1/2" aluminum pipe with 3&1/4" aluminum cap, bears N 00°17'09" E. 38.02', (C.S. #M102-12 record - N 00°16'53" E. 38.0'), marked exactly "T20S R10W S 0-16-53 W 38.00 RM C1 4 S30 S 1978 1986" (C.S. #M102-12).

1/4 CORNER SECTIONS 30 AND 31 Found: Standard USFS 2&1/4" aluminum pipe 6" above ground with 3&1/4" aluminum cap marked as shown.

From which: 18" cedar bears S 02&1/4° W. 18.1'; with "1/4S31 B" and brass "PLS 1978" washer visible in partially healed blaze: (C.S. #M102-12); 19" cedar bears N 87&1/2° W. 26.5'; with "1/4S30 BT" and brass "LS 1978" washer visible in partially healed blaze (C.S. #M102-12); Reference monument, standard USFS 2&1/4" aluminum pipe with 3&1/4" aluminum cap bears S 89°28'09" W. 37.43' (Set in C.S. #M102-12 record - S 89°25'40" W. 37.38'), marked "T20S R10W R.M. 37.38 FT S 30 S 31 PLS 1978 1986". 1/2" iron pipe erroneous 1/4 corner bears S 88°33'42" W. 98.33' (C.S. #M10-3).

GPS SATELITE OBSERVATION STATION #201032 (GATE) Found: 5/8" by 24" rebar flush with ground with 3&1/4" aluminum cap marked as shown.

Forest Service Record Information: Oregon North Zone (NAD 1927) phi = 43°47'34.07014" lambda = 123°55'28.47195" X = 1,095,983.841 Y = 793,349.669 theta = -2.342914464°

I, Royce Hill, a Registered Professional Land Surveyor in the State of Oregon, hereby certify that this plat and the notes hereon are a correct representation of a survey I performed from July through September, 1992, at the request of the U.S.D.A. Forest Service, in accordance with the Statutes of the State of Oregon, and the articles of my contract.

Signature: Royce Hill, PLS #2289

NARRATIVE

PURPOSE:

The purpose of this survey is to locate and post a portion of the boundaries of the Siuslaw National Forest land located in Section 30, T20S, R10W, WM.

HISTORY:

1867 - John W. Meldrum, U.S. Deputy Surveyor, Contract No. 116, surveyed the east, south, and the south half of the west lines of Section 30. 1874 - W. Byars, U.S. Deputy Surveyor, Contract No. 202, surveyed the east half of the north line of Section 30. 1894 - Nathaniel Martin, U.S. Deputy Surveyor, Contract No. 599, surveyed the west half of the north line of Section 30 and resurveyed the west and south lines. He established new 1/4 corners on the west and south lines. 1958 - Clifford A. Stevens, PLS #238, subdivided Section 30. He incorrectly reestablished the south 1/4 corner using the Meldrum GLO record instead of the Martin record (C.S. #M10-3). 1986 - Daniel W. Baker, PLS #1978, properly subdivided Section 30 (C.S. #M102-12).

PROCEDURE:

This survey was performed by random traverse using a Wild T1000U / D1 1000 electronic total station. The traverse between the 1/4 corners was open with computed closure against the Baker record exceeding the minimum accepted error of closure of 1/5000. The tie to the GPS station was part of a closed traverse and was compass rule adjusted. Both traverses were based on an hour-angle solar. Magnetic variation was determined using a Buff & Buff transit.

The field crew consisted of Royce Hill, Robert Carver, and Jim Prince.

RESOLUTION:

The corners set in C.S. #M102-12 were accepted and no new corners were set.

MONUMENTATION:

The boundary was posted with six foot long fiberglass posts with USFS boundary decals attached with a maximum of 150' spacing. Boundary lines were posted by offsets made from the random traverse points to the true property line.

Bearing trees found and tied have "BT" and "ATTENTION" or "LAND SURVEY MONUMENT" signs attached. Bearings to the BT's were determined using the total station. Distances were measured to the side-center of the tree and diameters were measured at chest height.

PROPERTY SURVEYORS FILE DATA NOT REMOVE FROM OFFICE

Survey for the United States Forest Service in Section 30, Township 20 South, Range 10 West, of the Willamette Meridian, Douglas County, Oregon

Too Tight Cadastral Survey Contract No. 53-04T0-2-2070N July 3, 1992 to September 11, 1992 SNF Field Book #14



CORNERSTONE LAND SURVEYING 4831 20th Ave. So. Salem, Oregon 97302 (503)-371-0059