

CORNER DATA

- (52) NORTH 1/4 SECTION 32
FD: 2 1/2" D.C.S.O. B.C. ON 1/4" I. POST, TOP 9" HIGH
10" D. FIB, S 73° 00' W 15.8, FACE HEALED.
10" MADRONE, N 60° 04' W 12.2, FACE NOT YET HEALED, SCRIBING VISIBLE.
9" MADRONE, N 89° 51' W 7.1, FACE OPENED.
25" D. FIB STUMP, N 68° 30' E 26.0, I OPENED FACE, SCRIBING VISIBLE.
26" D. FIB STUMP, S 54° 15' E 22.9, FACE OPENED.
- (2) NORTH 1/4 SECTION 33
FD: 5/8" SMOOTH I. ROD TIPPED 0.5 NW MEASURE TO TOP.
6" X 8" X 15" SANDSTONE SET LOOSELY ON NW SIDE OF ROD.
22" W. OAK STUMP, S 68° 26' W 34.1, FACE OPENED, SCRIBING VISIBLE.
18" OAK STUMP, N 64° 03' E 149.7, NO MARKS VIS.
18" W. OAK, S 91° 22' E 49.1, NO MARKS VIS.
22" W. OAK, S 26° 14' W 52.3, NO MARKS VIS.
- (75) LOT CORNER, LOTS 15 & 16, SUNSHINE RANCH
FD: 1/2" I. PIPE, 0.41 SOUTH OF LINE
- (36) EAST 1/4 SECTION 33
FD: 2 1/2" D.C.S.O. B.C. ON 1/4" I. POST, TOP 10" HIGH.
24" MADRONE, S 64° 44' E 125.6, FACE HEALED. (NO RECORD)
10" D. OAK SNAG, N 3° 27' W, 66.9, FACE ALMOST HEALED, NO SCRIBING VIS.

SURVEY FOR
CIRCLE E RANCH

E 1/2 SEC. 32 AND N 1/2 SEC. 33, T.26 S., R.5 W., W.M.
DOUGLAS COUNTY, OREGON

SCALE: 1" = 600'

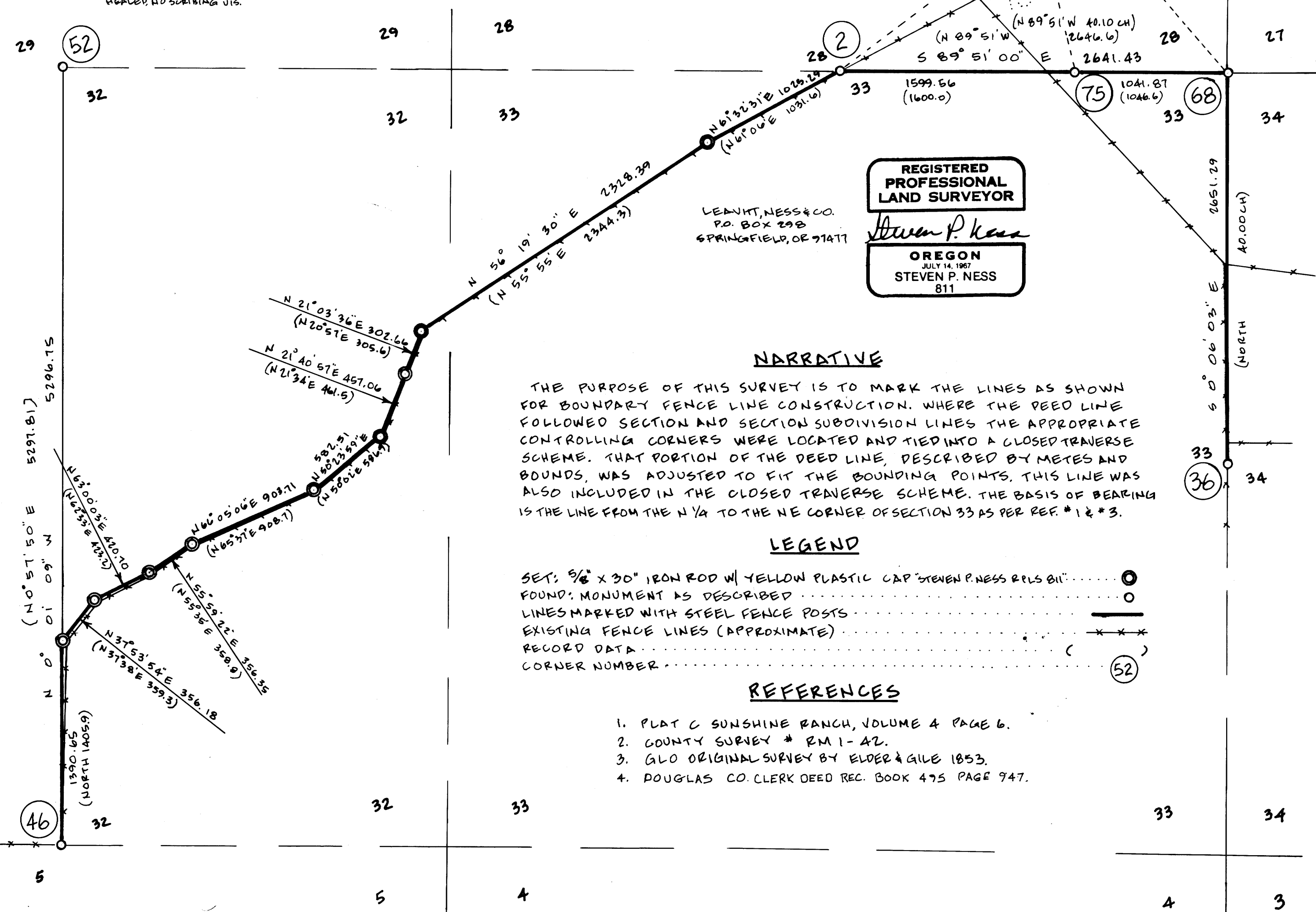
AUGUST 17, 1992

(68) NORTHEAST CORNER SECTION 33

FD: 1/2" I. PIPE
25" W. OAK, S 14° 15' W 105.6, I OPEN FINE
SCRIBING
15" W. OAK, N 33° 53' W 109.1, I OPEN BUT
FIND NO SCRIBING IN SMALL AREA.
17" ROOT HOLE, S 60° 33' E 133.7, OLD OAK
ROOT REMAINS.
30" W. OAK, S 52° 33' E 133.9, FACES EVIDENT
I OPENED FINE OLD AXEWORK, NO SCRIBING.

(46) SOUTH 1/4 SECTION 32

FD: 2 1/2" D.C.S.O. B.C. ON 1/4" I. POST, TOP 14" HIGH,
TOP TIPPED 0.4 SOUTH MEASURE TO TOP.
9" W. OAK, S 19° 32' W 20.2, FACE HEALED
15" W. OAK, N 50° 27' W 21.9, FACE OPENED
PARTIAL SCRIBING VIS.
OAK ROOT HOLE, S 8° 34' E 92.8



REGISTERED
PROFESSIONAL
LAND SURVEYOR

LEAVITT, NESS & CO.
P.O. BOX 298
SPRINGFIELD, OR 97147
Steven P. Ness
OREGON
JULY 14, 1967
STEVEN P. NESS
811

NARRATIVE

THE PURPOSE OF THIS SURVEY IS TO MARK THE LINES AS SHOWN FOR BOUNDARY FENCE LINE CONSTRUCTION. WHERE THE DEED LINE FOLLOWED SECTION AND SECTION SUBDIVISION LINES THE APPROPRIATE CONTROLLING CORNERS WERE LOCATED AND TIED INTO A CLOSED TRAVERSE SCHEME. THAT PORTION OF THE DEED LINE, DESCRIBED BY METES AND BOUNDS, WAS ADJUSTED TO FIT THE BOUNDING POINTS. THIS LINE WAS ALSO INCLUDED IN THE CLOSED TRAVERSE SCHEME. THE BASIS OF BEARING IS THE LINE FROM THE N 1/4 TO THE NE CORNER OF SECTION 33 AS PER REF. #1 & #3.

LEGEND

- SET: 5/8" X 30" IRON ROD W/ YELLOW PLASTIC CAP "STEVEN P. NESS RLS 811" (Symbol: circle with dot)
- FOUND: MONUMENT AS DESCRIBED (Symbol: circle)
- LINES MARKED WITH STEEL FENCE POSTS (Symbol: dashed line)
- EXISTING FENCE LINES (APPROXIMATE) (Symbol: line with crosses)
- RECORD DATA (Symbol: line with circles)
- CORNER NUMBER (Symbol: circle with number)

REFERENCES

1. PLAT C SUNSHINE RANCH, VOLUME 4 PAGE 6.
2. COUNTY SURVEY # RM 1-42.
3. GLO ORIGINAL SURVEY BY ELDER & GILE 1853.
4. DOUGLAS CO. CLERK DEED REC. BOOK 475 PAGE 747.

M 115 - 59

M 115 - 59