

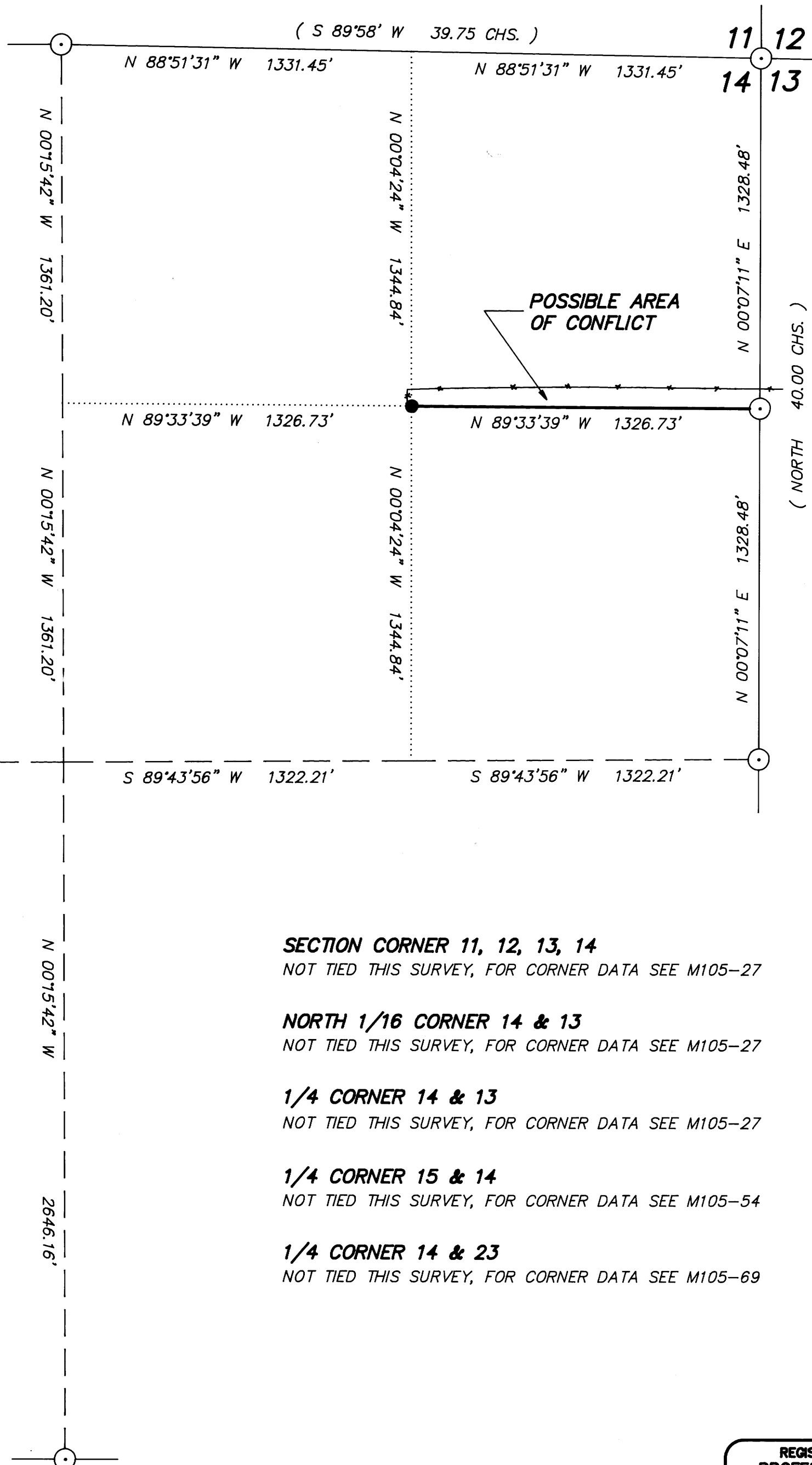
1/4 CORNER 11 & 14

FOUND : 1-1/4" IRON PIPE WITH DOUGLAS CO. BRASS CAP "1958"
 24" WHITE FIR , N 22-1/4 E , 49.6' - CLOSED FACE
 (RECORD - N 16 E , 51.2')
 36" CEDAR SNAG , S 32-3/4 E , 72.9' - VISIBLE SCRIBING "1/4S"
 (RECORD - S 39 E , 73.0')

NORTHEAST 1/16 CORNER SECTION 14

SET : 2" X 42" IRON PIPE WITH BRASS CAP
 8" W. FIR , N 11 W , 27.3' - SCRIBED "NE1/16S14 BT"
 26" FIR , S 57 W , 18.2' - SCRIBED "NE1/16S14 BT"

NOTE : DISTANCES TO BEARING TREES ARE FROM THE CORNER TO A "W"
 NAIL IN LOWER BLAZE AND BEARINGS ARE MAGNETIC, VAR. 20'



- NARRATIVE -

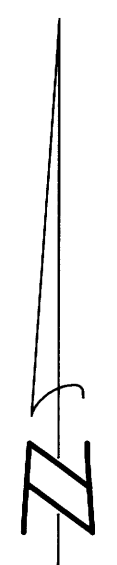
THIS SURVEY WAS MADE IN JULY, 1992 BY DONALD L. PEEL OF PEEL BAKER LAND SURVEYING, INC., 1385 OAK STREET - SUITE 3 EUGENE, OREGON. THE PURPOSE OF THIS SURVEY WAS TO LOCATE AND MARK THE SOUTH LINE OF THE NE1/4NE1/4 OF SECTION 14, T22S, R5W, W.M. FOR WEYERHAEUSER COMPANY. A WILD T1000 THEOMAT AND DISS E.D.M. WERE USED TO PERFORM THIS SURVEY. THE BASIS OF BEARING FOR THIS SURVEY WAS A SOLAR OBSERVATION (AS PER MY EARLIER SURVEY IN SECTION 13, M105-27). MOST OF THE CORNERS USED FOR CONTROL IN THIS SURVEY WERE TIED IN MY EARLIER SURVEYS, M105-27, M105-54 AND M105-69. ALL THREE FORMER SURVEYS AND THIS SURVEY ARE ON THE SAME COORDINATE SYSTEM THUS ELIMINATING THE NEED TO RETIE MOST OF THE CORNERS. THE NORTH 1/4 CORNER AS ESTABLISHED BY DOUGLAS CO. IN 1958 WAS FOUND AND USED FOR CONTROL. THE CENTER 1/4 CORNER AS ESTABLISHED BY MCGILLICUDDY IN C.S. FILE NO. 42/33 WAS NOT USED FOR CONTROL. THERE SEEMED TO BE A DIFFERENCE IN THE POSITION OF THE NORTH 1/4 CORNER AS ESTABLISHED BY MCGILLICUDDY AND AS ESTABLISHED BY DOUGLAS CO. AND I FOUND NO TRACE OF THE MCGILLICUDDY SOUTH 1/4 CORNER SO I ELECTED TO ESTABLISH A NEW POSITION FOR THE CENTER 1/4 CORNER. THE POSITION FOR SAID CENTER 1/4 CORNER WAS DETERMINED (BUT NOT SET) AT THE POINT OF INTERSECTION OF THE NORTH-SOUTH AND EAST-WEST CENTERLINES. A CLOSED RANDOM TRAVERSE WAS RUN AS NEAR AS POSSIBLE TO THE SOUTH LINE OF THE NE1/4NE1/4. OFFSETS FROM THE RANDOM TRAVERSE LINE TO THE TRUE PROPERTY LINE WERE CALCULATED AND USED TO DETERMINE THE POSITION OF THE TRUE PROPERTY LINE. THE TRUE PROPERTY LINE WAS MARKED IN THE FIELD BY BLAZING TREES (BLAZES NOTCHED AND PAINTED RED) ON THE WEYERHAEUSER SIDE OF LINE. THE NORTHEAST 1/16 CORNER WAS SET AT THE POINT OF INTERSECTION OF THE NORTH-SOUTH AND EAST-WEST CENTERLINES OF THE NORTHEAST 1/4. SAID CORNER WAS MONUMENTED AND REFERENCED AS SHOWN ON THIS PLAT.

- SECTION CORNER 11, 12, 13, 14**
NOT TIED THIS SURVEY, FOR CORNER DATA SEE M105-27
- NORTH 1/16 CORNER 14 & 13**
NOT TIED THIS SURVEY, FOR CORNER DATA SEE M105-27
- 1/4 CORNER 14 & 13**
NOT TIED THIS SURVEY, FOR CORNER DATA SEE M105-27
- 1/4 CORNER 15 & 14**
NOT TIED THIS SURVEY, FOR CORNER DATA SEE M105-54
- 1/4 CORNER 14 & 23**
NOT TIED THIS SURVEY, FOR CORNER DATA SEE M105-69

BASIS OF BEARING : SOLAR OBSERVATION AS PER M105-27
 (SEE NARRATIVE)

SCALE : 1" = 400'

- CORNERS FOUND
- CORNER SET THIS SURVEY
- PROPERTY LINE BLAZED
- () RECORD DATA G.L.O. 1855
- (()) RECORD DATA C.S. FILE NO. 42/33



COUNTY SURVEYORS FILE DATA
 DO NOT REMOVE FROM OFFICE

SURVEY IN
NE1/4 SECTION 14, T22S, R5W, W.M.
DOUGLAS COUNTY, OREGON
 FOR
WEYERHAEUSER COMPANY
 BY
PEEL BAKER LAND SURVEYING, INC.
 1385 OAK ST. - SUITE 3, EUGENE, OREGON
 JULY 6, 1992

REGISTERED
 PROFESSIONAL
 LAND SURVEYOR
 DONALD L. PEEL
 752

M115-53

M115-53