

1/4 CORNER 26 & 35  
 NOT TIED THIS SURVEY. FOR CORNER DATA SEE  
 LANE COUNTY SURVEY C.S. NO. 28433  
 OR DOUGLAS COUNTY SURVEY M106-59

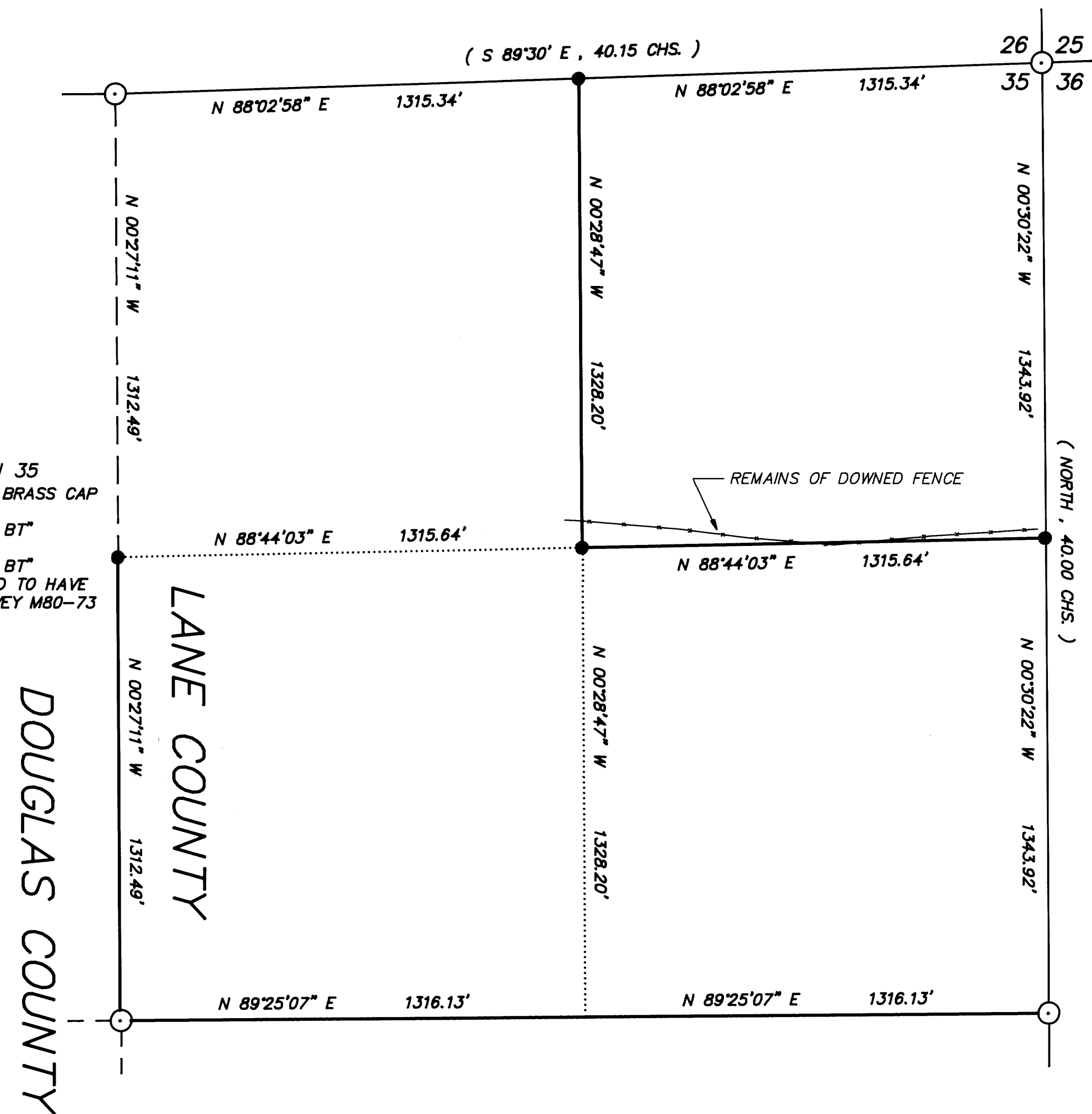
EAST 1/16 CORNER SECTIONS 26 & 35  
 SET : 2" X 42" IRON PIPE WITH BRASS CAP  
 26" FIR , N 22 E , 5.7' - SCRIBED "E1/16S26 BT"  
 26" FIR , S 58 E , 7.9' - SCRIBED "E1/16S35 BT"

SECTION CORNER 25, 26, 35, 36  
 FOUND : 2" IRON PIPE WITH 2-3/4" BRASS CAP  
 55" FIR STUMP , N 11-1/4 E , 64.5' - VISIBLE SCRIBE, B.L.M. TAG  
 43" FIR STUMP , N 77-1/2 E , 27.5' - DIST. TO "W" NAIL  
 38" FIR STUMP , S 4 W , 4.9' - DIST TO "W" NAIL, WEYCO TAG  
 20" FIR , S 61 W , 8.8' - WEYCO TAG  
 40" FIR STUMP , N 47-3/4 W , 13.8' - NO VISIBLE MARKS, G.L.O. TAG

T22S R4W  
 S26  
 E1/16 S35  
 PLS 752  
 1992

C-N 1/16 CORNER SECTION 35  
 SET : 2" X 42" IRON PIPE WITH BRASS CAP  
 15" FIR , N 28 W , 3.0'  
 SCRIBED "CN1/16S35 BT"  
 15" FIR , S 63 W , 21.1'  
 SCRIBED "CN1/16S35 BT"  
 NOTE : 3/4" IRON PIPE BELIEVED TO HAVE  
 BEEN SET IN DOUGLAS CO. SURVEY M80-73  
 BEARS S 34°15'41" E , 1.96'

T22S R4W  
 N1/16 S35  
 PLS 752  
 1992



NE 1/16 CORNER SECTION 35  
 SET : 2" X 41" IRON PIPE WITH BRASS CAP  
 12" FIR , N 57 E , 21.3' - SCRIBED "NE1/16S35 BT"  
 15" FIR , S 39 E , 19.4' - SCRIBED "NE1/16S35 BT"

T22S R4W  
 NE1/16 S35  
 PLS 752  
 1992

NORTH 1/16 CORNER 35 & 36  
 SET : 2" X 41" IRON PIPE WITH BRASS CAP  
 11" FIR , N 56 E , 10.2'  
 SCRIBED "N1/16S36 BT"  
 12" FIR , N 29 W , 11.0'  
 SCRIBED "N1/16S35 BT"

T22S R4W  
 N1/16  
 S35 S36  
 PLS 752  
 1992

CENTER 1/4 CORNER SECTION 35  
 FOUND : 2" IRON PIPE WITH BRASS CAP  
 FOR CORNER DATA SEE MY PREVIOUS SURVEY  
 LANE CO. SURVEY C.S. NO. 28433 OR  
 DOUGLAS CO. SURVEY M106-59

1/4 CORNER 35 & 36  
 FOUND : 1" ALUMINUM PIPE IN MOUND OF STONE  
 44" INCENSE CEDAR , N 58-1/2 W , 15.4'  
 OPENED TO VISIBLE SCRIBING

- NARRATIVE -

THIS SURVEY WAS MADE IN MARCH AND APRIL, 1992 BY DONALD L. PEEL OF PEEL BAKER LAND SURVEYING, INC. 1385 OAK STREET- SUITE 3, EUGENE, OREGON. THE PURPOSE OF THIS SURVEY WAS TO LOCATE AND MARK SOME OF THE PROPERTY LINES OF THE LAND OWNED BY WEYERHAEUSER COMPANY IN SECTION 35, T22S, R4W, W.M.. A WILD T1000 THEOMAT AND DISS E.D.M. WERE USED TO PERFORM THIS SURVEY. BEARINGS FOR THIS SURVEY WERE BASED ON A SOLAR OBSERVATION AS PER MY PREVIOUS SURVEY (LANE COUNTY SURVEY NO. 28433 OR DOUGLAS COUNTY SURVEY M106-59). BY STARTING THIS SURVEY ON TRAVERSE POINTS ESTABLISHED IN MY PREVIOUS SURVEY IT ELIMINATED THE NEED TO TIE THE NORTH 1/4 CORNER AGAIN. THE NORTHEAST CORNER WAS FOUND AND USED FOR CONTROL. CLOSED RANDOM TRAVERSES WERE RUN AS NEAR AS POSSIBLE TO THE PROPERTY LINES THAT WERE TO BE MARKED. OFFSETS FROM THE RANDOM TRAVERSE LINES TO THE TRUE PROPERTY LINES WERE CALCULATED AND USED TO DETERMINE THE POSITION OF THE TRUE PROPERTY LINE. THE TRUE PROPERTY LINE WAS MARKED IN THE FIELD BY BLAZING TREES (BLAZES NOTCHED AND PAINTED RED) ON BOTH SIDES OF THE TRUE LINE. THE NORTH 1/16 CORNER ON THE EAST LINE OF SECTION 35 WAS SET AT MIDPOINT BETWEEN THE EAST 1/4 CORNER AND THE NORTHEAST SECTION CORNER. THE CENTER-NORTH 1/16 CORNER WAS SET AT MIDPOINT BETWEEN THE CENTER 1/4 CORNER AND THE NORTH 1/4 CORNER. THE EAST 1/16 CORNER ON THE NORTH LINE OF SECTION 35 WAS SET AT MIDPOINT BETWEEN THE NORTH 1/4 CORNER AND THE NORTHEAST SECTION CORNER. THE NORTHEAST 1/16 CORNER WAS SET AT THE POINT OF INTERSECTION OF THE NORTH-SOUTH AND EAST-WEST CENTERLINES OF THE NORTHEAST 1/4. ALL CORNERS SET IN THIS SURVEY WERE MONUMENTED AS SHOWN ON THIS PLAT. FOR ALL BEARING TREES MARKED IN THIS SURVEY, THE DISTANCE WAS MEASURED FROM THE CORNER TO A "W" NAIL IN THE LOWER BLAZE AND THE BEARINGS WERE MAGNETIC, VARIATION 20'.

BASIS OF BEARING : SOLAR OBSERVATION AS PER  
 LANE CO. C.S. NO. 28433  
 OR DOUGLAS CO. M106-59

SCALE : 1" = 300'

- CORNERS FOUND
- CORNERS SET THIS SURVEY
- PROPERTY LINE BLAZED
- ( ) RECORD DATA G.L.O. 1884

REGISTERED  
 PROFESSIONAL  
 LAND SURVEYOR  
 Donald L. Peel  
 OREGON  
 JULY 8, 1988  
 DONALD L. PEEL  
 752

SURVEY IN  
 NE1/4 SECTION 35, T22S, R4W, W.M.  
 LANE AND DOUGLAS COUNTIES

FOR  
 WEYERHAEUSER COMPANY

BY  
 PEEL BAKER LAND SURVEYING, INC.  
 1385 OAK STREET - SUITE 3, EUGENE, OREGON  
 APRIL 3, 1992

PROPERTY SURVEYORS FILE DATA  
 NOT REMOVE FROM OFFICE

M115-5

M115-5