

MAP FILE M115-4

# Survey For I.P. Timberlands Operating Co., Menasha, and Moore Mill.

Located in Section 16, T 22 S, R12 W W.M.,  
Douglas County, Oregon.

## NARRATIVE

The purpose of this survey was to set the corners and mark line as shown in accordance with International Paper contract #SA91-78. I found and accepted the original SE corner as remonumented by Ward. I then tied and accepted the East 1/4 corner as proportioned by Ward. I then tied and accepted the original North 1/4 as remonumented by Stuntzner and Weatherly. I then tied and accepted the original West 1/4 corner and SW corner as remonumented by Ingram. I then found and remonumented the original South 1/4 corner. This gave me the control to subdivide the South half of the section as per B.L.M. manual. I found and accepted the S 1/16 S16 and S17 (as corrected from Ingram's 1986 survey) and traversed through the south half the section marking line and setting corners as shown hereon. Equipment used was a T-1000 Theodolite and Wild DI 1000 EDM. All traverse line were closed. Line posts were set by offsets from traverse points. Assisting personnel were Jerry Estabrook, and Keith Clevenger.

## BASIS OF BEARING

The basis of bearings was a solar observation.

## NOTES

Bearings to BT's were taken with hand compass (dec'l=19° East) to the root bole. Distances were taken to side center (set spike in new BT's) unless other wise noted.

## REFERENCE SURVEYS

- 1857 G.L.O. Harvey Gordon set the NW corner.
- 1889 G.L.O. William Thiel finished section 16.
- 1982 M92-57 Robert Ward
- 1985 M98-54 Ronald Stuntzner
- 1986 M101-18/CS62-43 Francis Ingram (county).
- 1987 M105-28/M105-30 Les Roberts

REGISTERED  
PROFESSIONAL  
LAND SURVEYOR

Harvey Wilcox

OREGON  
JULY 17, 1988  
HARVEY WILCOX  
2244

## Stuntzner Engineering & Forestry

ENGINEERING • LAND SURVEYING • FORESTRY  
PLANNING • WATER RIGHTS

705 South 4th St. Phone: (503) 267-2872  
Post Office Box 118 Coos Bay, Oregon 97420 Fax: (503) 267-0588

Drawn By: Keith Clevenger Date: Mar. 1992

Checked By: Harvey Wilcox Drawing No.: 91-165

Designed By: Revised:

Job Name: I.P. Winchester Sheet 1 of 1

LINE POST REFERENCES	
LP1	23" HEMLOCK BRS S19°E 19.5'
LP2	6" SPRUCE BRS N9°E 1.8'
LP3	19" FIR BRS S3°E 3.9'
LP4	19" ALDER BRS N37°E 11.3'
LP5	24" SPRUCE BRS S80°E 7.2'
LP6	12" SPRUCE BRS S70°E 3.3'
LP7	22" SPRUCE BRS S74°E 0.5'
LP8	12" ALDER BRS NORTH 14.7'
LP9	22" FIR BRS S37°W 2.6'
LP10	20" CEDAR BRS S64°E 3.3'
LP11	16" ALDER BRS S35°W 25.3'
LP12	3" HEMLOCK BRS S86°E 4.9'
LP13	10" FIR BRS N84°W 9.2'
LP14	26" FIR BRS S48°W 7.6'
LP15	12" FIR BRS N55°E 2.2'
LP16	8" HEMLOCK BRS S86°W 3.6'
LP17	14" HEMLOCK BRS S67°E 2.9'
LP18	18" HEMLOCK BRS S60°W 14.5'
LP19	10" HEMLOCK BRS S83°W 5.1'
LP20	17" ALDER BRS N66°W 3.5'
LP21	10" FIR BRS S68°W 3.1'
LP22	20" FIR BRS N13°E 9.6'
LP23	18" FIR BRS S15°E 3.2'
LP24	18" HEMLOCK BRS N3°E 9.5'
LP25	7" ALDER BRS N29°E 9.9'
LP26	4" MAPLE BRS S50°E 10.3'

### LEGEND

- ⊙ Found Corner (as shown).
- Set Corner (as shown).
- Blazed line
- ◇ 6" Alum. Post. & magnet
- ( ) Record Information.
- >>> Ridge
- Draw

SCALE 1" = 400 Feet

1' = 0.3048 Meters

1/4 S9 & S16  
FD. 3 1/4" Alum. cap 12" deep in road  
ditch alum. post brs North 7.0'.  
FD. BT's: Down hemlock brs N60°W 25.5'(orig.).  
60" Spruce stump brs S60°E 25.7'(orig.).  
18" Dead cedar w/x & tags brs  
N49°W 52.3'(Weatherly).  
24" cedar stump 12' high brs S81°E  
50.4'(weatherly).  
17" Fir stump 12' high brs S41°E  
36.3'(weatherly).  
27" Fir stump brs south 35.6'(weatherly).

1/4 S15 & S16  
FD. 2 1/2" BC 2" ODIP (Ward) w/alum. post  
alongside.  
FD. BT's: 12" Fir w/healed face & tags brs  
N20°E 10.9'(Ward).  
18" Hemlock w/vis. scribe & tags  
brs S46°W 7.3'(Ward).  
MKD BT's: 8" Fir face scribed "1/4 S16 BT"  
w/x & tags brs N51°W 3.1'.  
10" Fir face scribed "1/4 S15 BT"  
w/x & tags brs S60°E 27.8'.

1/4 S16 & S17  
FD. 2 3/8" BC IDIP on east side of clearcut  
FD. BT's: Rotten spruce snag brs N86°W 20.5'(orig).  
Hemlock root hole brs S53°E 23.8'(orig).  
22" hemlock stump w/vis. scribe brs S84°W 37.8'(Ingram)  
14" Spruce w/vis. scribe & tag brs N54°E 33.6'(Ingram).  
19" Fir w/vis. scribe & tag brs S57°E 20.0'(Ingram).  
15" Fir stump w/face brs S43°W 18.9'(Ingram).

S1/16 S16 & S17  
Fd Douglas County brass cap brs N28°W  
8.9' from my calculated position. The  
County is resetting this corner

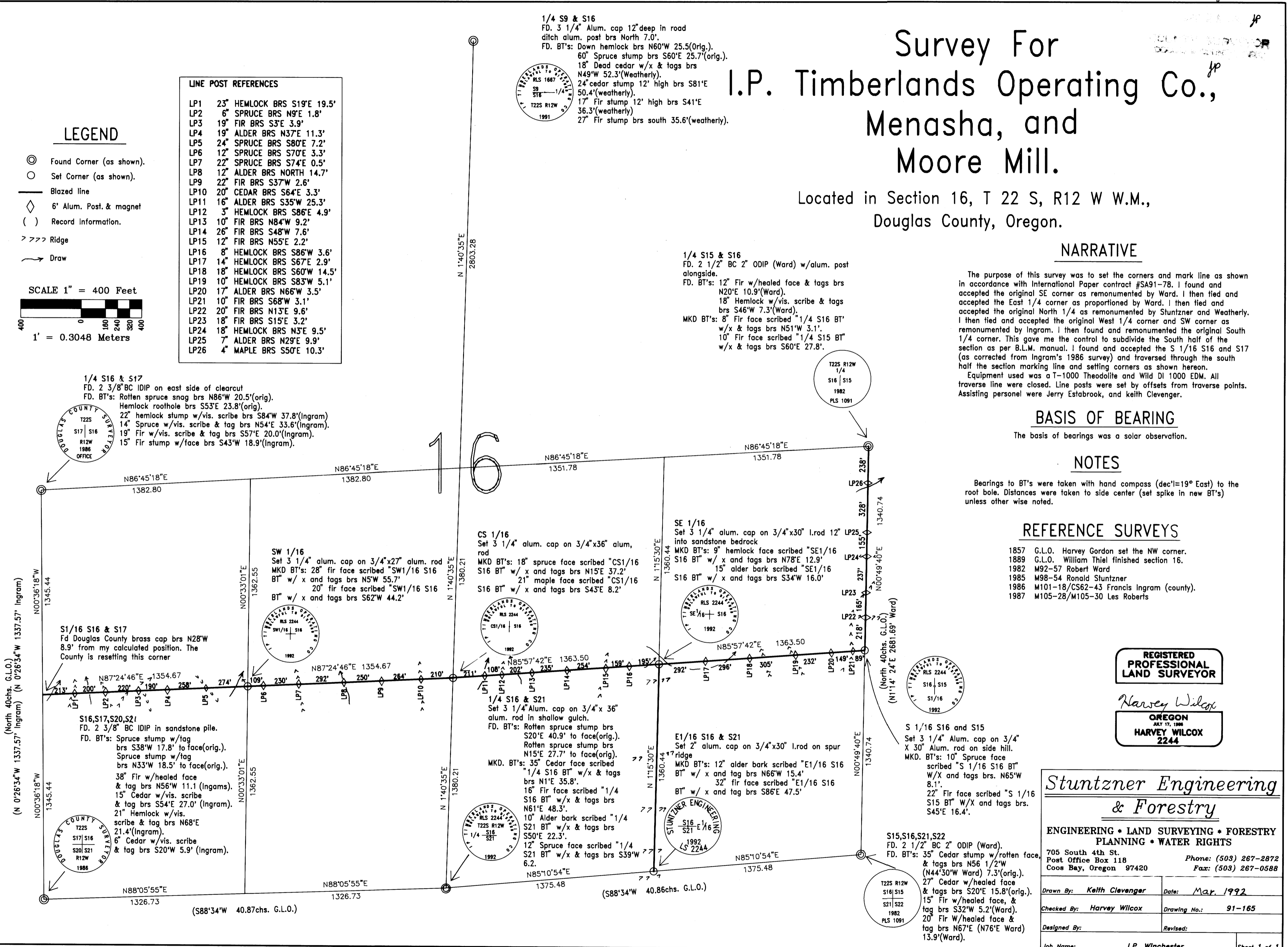
S16,S17,S20,S21  
FD. 2 3/8" BC IDIP in sandstone pile.  
FD. BT's: Spruce stump w/tag  
brs S38°W 17.8' to face(orig.).  
Spruce stump w/tag  
brs N33°W 18.5' to face(orig.).  
38" Fir w/healed face  
& tag brs N56°W 11.1 (Ingrams).  
15" Cedar w/vis. scribe  
& tag brs S54°E 27.0' (Ingram).  
21" Hemlock w/vis.  
scribe & tag brs N68°E  
21.4'(Ingram).  
6" Cedar w/vis. scribe  
& tag brs S20°W 5.9' (Ingram).

CS 1/16  
Set 3 1/4" alum. cap on 3/4"x36" alum.  
rod  
MKD BT's: 18" spruce face scribed "CS1/16  
S16 BT" w/x and tags brs N15°E 37.2'  
21" maple face scribed "CS1/16  
S16 BT" w/x and tags brs S43°E 8.2'

SE 1/16  
Set 3 1/4" alum. cap on 3/4"x30" l.rod 12" LP25  
into sandstone bedrock  
MKD BT's: 9" hemlock face scribed "SE1/16  
S16 BT" w/x and tags brs N78°E 12.9'  
15" alder bark scribed "SE1/16  
S16 BT" w/x and tags brs S34°W 16.0'

S 1/16 S16 and S15  
Set 3 1/4" Alum. cap on 3/4"  
X 30" Alum. rod on side hill.  
MKD. BT's: 10" Spruce face  
scribed "S 1/16 S16 BT"  
W/X and tags brs. N65°W  
8.1'.  
22" Fir face scribed "S 1/16  
S15 BT" W/X and tags brs.  
S45°E 16.4'.

S15,S16,S21,S22  
FD. 2 1/2" BC 2" ODIP (Ward).  
FD. BT's: 35" Cedar stump w/rotten face,  
& tags brs N56 1/2°W  
(N44°30'W Ward) 7.3'(orig.).  
27" Cedar w/healed face  
& tags brs S20°E 15.8'(orig.).  
15" Fir w/healed face, &  
tag brs S32°W 5.2'(Ward).  
20" Fir w/healed face &  
tag brs N67°E (N76°E Ward)  
13.9'(Ward).



MAP FILE M115-4