

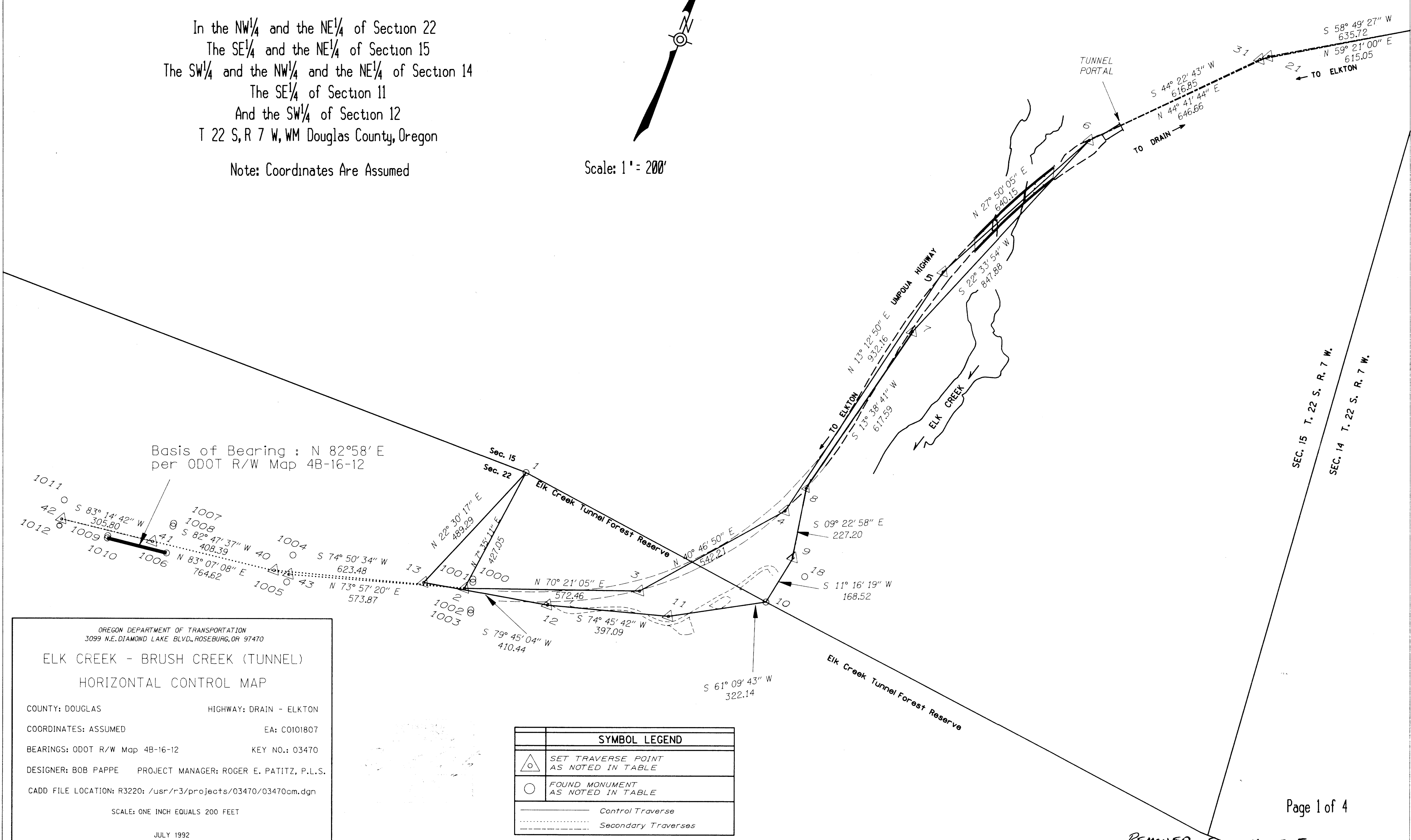
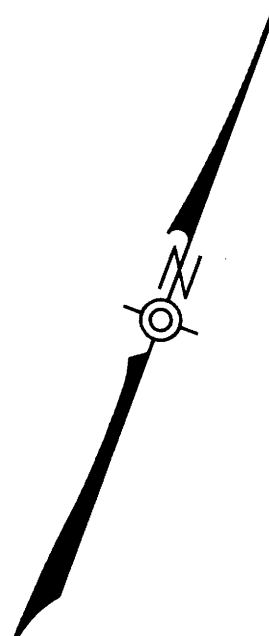
# LOCATION HORIZONTAL CONTROL SURVEY AND RECOVERY MAP

## FOR THE OREGON DEPARTMENT OF TRANSPORTATION

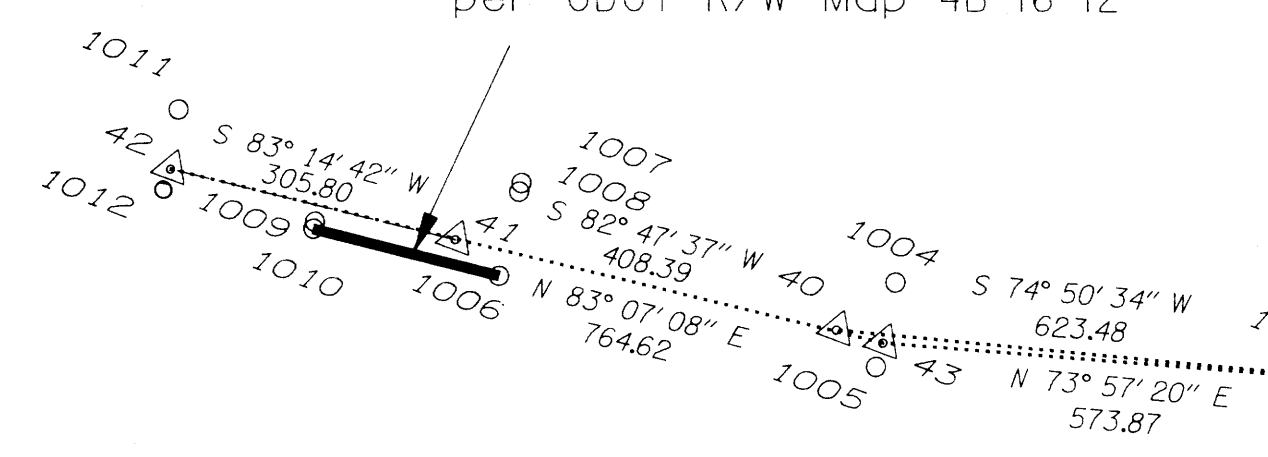
In the NW<sup>1</sup>/<sub>4</sub> and the NE<sup>1</sup>/<sub>4</sub> of Section 22  
 The SE<sup>1</sup>/<sub>4</sub> and the NE<sup>1</sup>/<sub>4</sub> of Section 15  
 The SW<sup>1</sup>/<sub>4</sub> and the NW<sup>1</sup>/<sub>4</sub> and the NE<sup>1</sup>/<sub>4</sub> of Section 14  
 The SE<sup>1</sup>/<sub>4</sub> of Section 11  
 And the SW<sup>1</sup>/<sub>4</sub> of Section 12  
 T 22 S, R 7 W, WM Douglas County, Oregon

Note: Coordinates Are Assumed

Scale: 1" = 200'



Basis of Bearing : N 82°58' E  
 per ODOT R/W Map 4B-16-12



OREGON DEPARTMENT OF TRANSPORTATION  
 3099 N.E. DIAMOND LAKE BLVD., ROSEBURG, OR 97470

### ELK CREEK - BRUSH CREEK (TUNNEL) HORIZONTAL CONTROL MAP

COUNTY: DOUGLAS HIGHWAY: DRAIN - ELKTON  
 COORDINATES: ASSUMED EA: C0101807  
 BEARINGS: ODOT R/W Map 4B-16-12 KEY NO.: 03470  
 DESIGNER: BOB PAPPE PROJECT MANAGER: ROGER E. PATITZ, P.L.S.  
 CADD FILE LOCATION: R3220: /usr/r3/projects/03470/03470cm.dgn

SCALE: ONE INCH EQUALS 200 FEET

JULY 1992

SYMBOL LEGEND	
	SET TRAVERSE POINT AS NOTED IN TABLE
	FOUND MONUMENT AS NOTED IN TABLE
	Control Traverse
	Secondary Traverses

REMOVED FROM M-FILE.  
 NOW FILED AS ST. HWY. MAP

ST. HWY. 38-001A

M 115 - 38 A

M 115 - 38 A