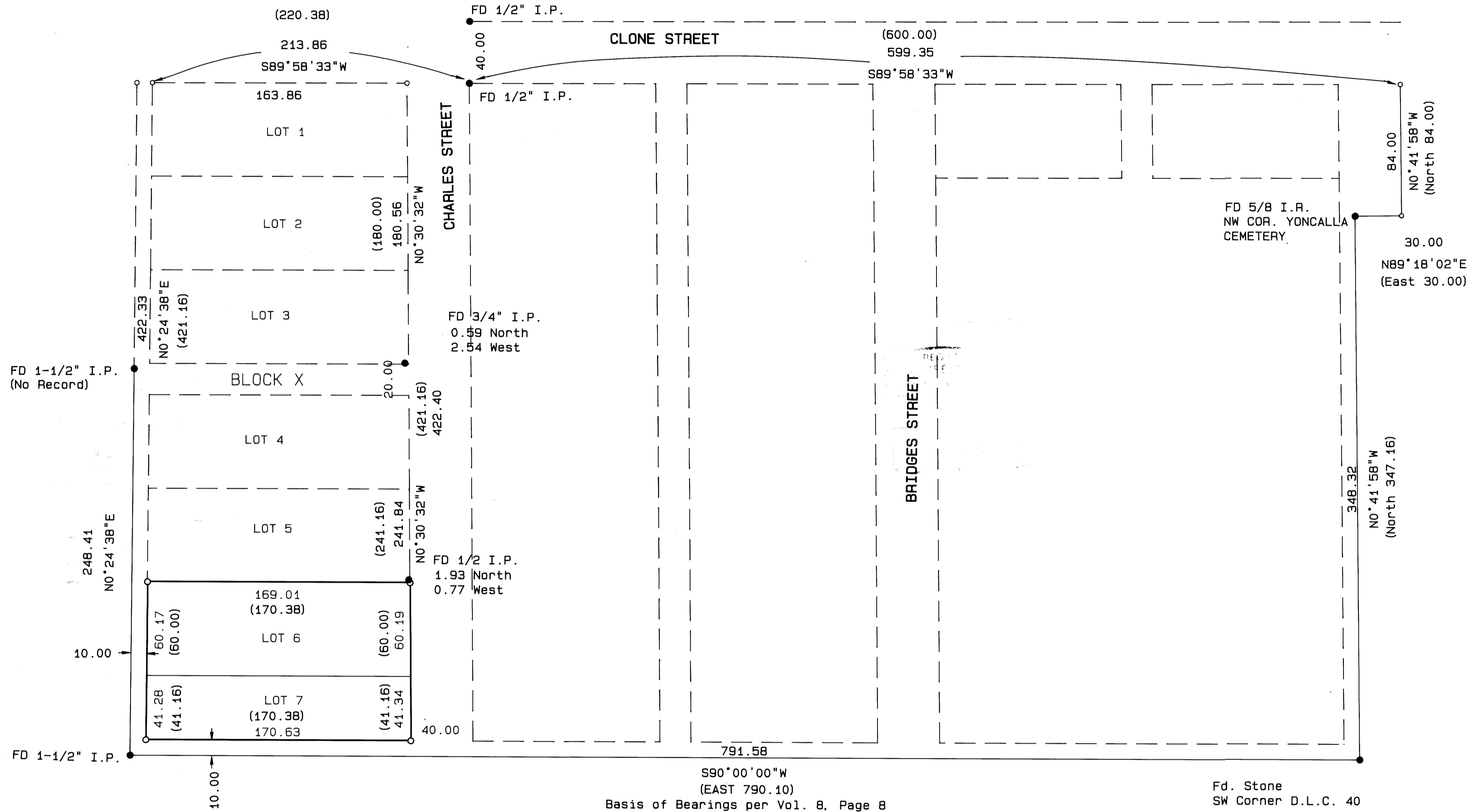


# BOUNDARY SURVEY

IN SE 1/4, SEC 4, T23S, R5W, W.M.  
DOUGLAS COUNTY OREGON  
FOR JAMES MAST

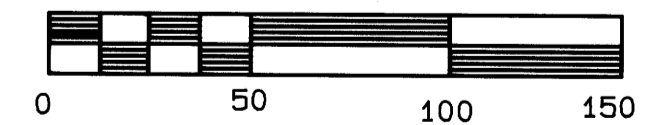
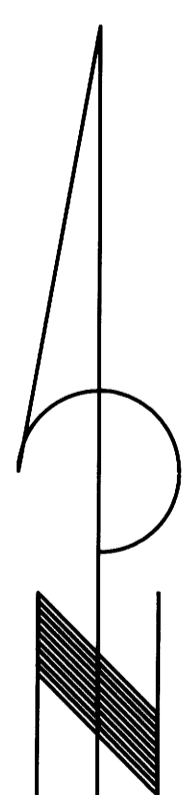
9 JUN 1992



REGISTERED  
PROFESSIONAL  
LAND SURVEYOR

*Mark A. Heimbarger*

OREGON  
JULY 16, 1987  
MARK A. HEIMBURGER  
2287



SCALE: 1 inch : 50 feet

FINAL

**LEGEND**

- Found monument as noted
- Set 5/8" x 30" iron rod with plastic cap marked "AA SURVEYING, INC."
- ( ) Record information per Vol. 8, Page 8.
- Calculated point, not set

**NARRATIVE**

The purpose of this survey was to monument the corners of Lot 6 and Lot 7, Block X, West Park Place as Recorded in Volume 8, Page 8 of the Records of the Douglas County Surveyor. The boundary of Block X was established using the monuments found on the West, South and East boundary of West Park Place. The monuments found on the West and South boundaries were used and the South and West lines of Block X were established 10 feet from the exterior lines of West Park Place. The East boundary of Block X was established using record Right-of-Way width from the found monument on the East Right-of-Way of Charles Street and proportioning the distance of the South line of the Subdivision. The north line of Block X was determined by establishing the South Right-of-Way line of Clone Street using the found monument on the East Right-of-Way line of Charles Street and record Plat distances and angles from the monument found at the Northwest corner of Yoncalla Cemetery. The South Right-of-Way was projected to intersect the West boundary of Block X. The lot corners in Block X were determined by proportioning the calculated distances to the Plat distances, excluding the alley width.

**SURVEYORS FILE DATA**  
**DO NOT REMOVE FROM OFFICE**

AA SURVEYING SERVICE, INC. - P.O. Box 130 - 2566 N. Stephens Street - Roseburg, Oregon 97470 - Tel. (503) 672-2096

MAP FILE M.115 - 17

MAP FILE M.115 - 17