

**SURVEY FOR  
THE TRAVELERS COMPANIES**  
LOCATED IN TOWNSHIP 20 SOUTH, RANGE 10 WEST W.M. SECTION 31  
DOUGLAS COUNTY, OREGON

**NARRATIVE**

THE PURPOSE OF THIS SURVEY WAS TO SET THE CORNERS AND MARK THE PROPERTY LINES SHOWN HEREON, FOR THE TRAVELERS COMPANIES. THE HISTORY OF CORNERS FOUND AND TIED IN OUR 1990 SURVEY FOR THE U.S. FOREST SERVICE MAP # M111-47E & M111-47F IS AS FOLLOWS. THE ORIGINAL CORNER OF SECTIONS 30 & 31 R10W AND SECTIONS 25 & 36 R11W T20S, PERPETUATED BY TOM D. McCULLOUGH LS 650, IN 1970 AND RECORDED IN CS # 55-142. THE WEST 1/4 SECTION 31, SET BY FRANK M. PUMPHREY AT PROPORTIONATE DISTANCE IN 1980 AND RECORDED ON MAP # M85-37. THE CORNER OF SECTION 36 R11W T20S, SECTION 31 R10W T20S, SECTION 6 R10W T21S, AND SECTION 1 R11W T21S, PERPETUATED IN REN. #48 & #21. THE HISTORY OF CORNERS FOUND AND TIED IN THIS SURVEY IS AS FOLLOWS. THE SOUTH 1/4 CORNER OF SECTION 31, SET BY HERMAN A. PIESKE LS 1651 AT PROPORTIONATE DISTANCE IN 1983, AND RECORDED ON MAP # M97-76A AND M97-76B. THE EAST 1/4 CORNER OF SECTION 31, SET BY FORREST J. HALES LS 453, AT PROPORTIONATE DISTANCE, IN 1979 AND RECORDED ON MAP # M76-55. THE NORTH 1/4 CORNER OF SECTION 31, SET BY DANIEL W. BAKER LS 1978, AT PROPORTIONATE DISTANCE, IN 1986 AND RECORDED ON MAP # M102-12. THE PROCEDURE WAS TO SUBDIVIDE THE SECTION AS PER 1973 BLM MANUAL AND SET CORNERS AS SHOWN. THE WEST 1/4 CORNER OF SECTION 31, THE SOUTH WEST CORNER OF SECTION 31 AND THE NORTH WEST CORNER OF SECTION 31 WERE TIED IN OUR 1990 SURVEY, FOR THE U.S. FOREST SERVICE, IN WHICH WE PLACED CONTROL POINTS IN SMITH RIVER ROAD FOR FUTURE REFERENCE. MAP # M111-47E & M111-47F. WE BEGAN OUR RANDOM TRAVERSE AT TWO OF THESE POINTS AND CLOSED ON TWO OF THESE POINTS, WITH A MINIMUM ERROR OF CLOSURE OF 1'/5000'. THE NORTH 1/4 CORNER, EAST 1/4 CORNER, AND SOUTH 1/4 CORNER OF SECTION 31 WERE TIED IN THIS TRAVERSE. THE WEST SIDE OF SECTION 31 WAS SHOWN TO BE LOTTED IN THE GLO PLAT OF JOHN W. MELDRUM 1866 SURVEY, CONTRACT #116. I PROPORTIONATELY LOTTED THE WEST SIDE OF SECTION 31. THE BASIS OF BEARING IS SOLAR FROM OUR 1990 SURVEY, MAP # M111-47E & M111-47F. THE INSTRUMENTS USED IN THIS SURVEY WERE A WILD T-1000 THEODOLITE AND A WILD DI-1000 EDM.

**REFERENCE SURVEY'S**

HARVEY WILCOX, LS2244, 1990, M111-47E AND M111-47F.  
DANIEL BAKER, LS1978, 1986, M102-12.  
HERMAN PIESKE, LS1651, 1983, M97-76A AND M97-76B.  
FORREST HALES, LS453, 1979, M76-55.  
JOHN MELDRUM, GLO, 1866 CONTRACT 116

**LEGEND**

- MONUMENT SET 2" ALUMINUM CAP ON 3/4" X 30" IRON ROD
- ⊙ MONUMENT FOUND AS NOTED
- ⊕ MONUMENT TIED IN OUR 1990 SURVEY M111-47E & M111-47F
- ( ) RECORD INFORMATION
- PROPERTY LINES BLAZED & FLAGGED WITH RED RIBBON

**CORNER ACCESSORY INFORMATION**

- ① S1/16 S31 & S36  
31' DOUGLAS FIR FACE SCRIBED \*S1/16 S36 BT\*, TAG AND WASHER BEARS N 83 3/4° W 44.55' TO SIDE CENTER, PER M 111-47F.  
20' DOUGLAS FIR FACE SCRIBED \*S1/16 S31 BT\*, TAG AND WASHER BEARS S 3 1/2° E 27.31' TO SIDE CENTER PER M 111-47F
- ② SECTION CORNER S36, S31, S1 & S6  
30' MAPLE WITH HEALED FACE AND TAGS BEARS N 14° W 15.2' TO SIDE CENTER, PER REN #21.  
21' DOUGLAS FIR WITH HEALED FACE AND TAG'S BEARS N 80° E 83.6' TO SIDE CENTER, PER REN. #48.  
37' DOUGLAS FIR WITH HEALED FACE AND TAG'S BEARS S 77 1/4° E 42.9' TO SIDE CENTER, PER REN. #21.  
39' MAPLE WITH HEALED FACE AND TAG'S BEARS S 27° W 11.2' TO SIDE CENTER, PER REN. #21. THIS TREE TRUNK HAS BLOWN DOWN, ANOTHER TRUNK OF THE SAME TREE BEARS S 25 1/2° W PER M 111-47F.
- ③ CW 1/16 S31  
MARKED A 24' DOUGLAS FIR, FACED, SCRIBED \*CW1/16 S31 BT\* AND TAG, BEARS N 45° W 10.35' TO SIDE CENTER.  
MARKED A 32' DOUGLAS FIR, FACED, SCRIBED \*CW1/16 S31 BT\* AND TAG, BEARS S 73° E 8.35' TO SIDE CENTER.
- ④ SW 1/16 S31  
MARKED A 22' DOUGLAS FIR, FACED, SCRIBED \*SW1/16 S31 BT\* AND TAG, BEARS N 21° W 14.50' TO SIDE CENTER.  
MARKED A 22' DOUGLAS FIR, FACED, SCRIBED \*SW1/16 S31 BT\* AND TAG, BEARS S 80° E 23.45' TO SIDE CENTER.

REGISTERED  
PROFESSIONAL  
LAND SURVEYOR

*Ronald E. Stuntz*

OREGON  
SEPTEMBER 21, 1977  
RONALD E. STUNTZNER  
1342

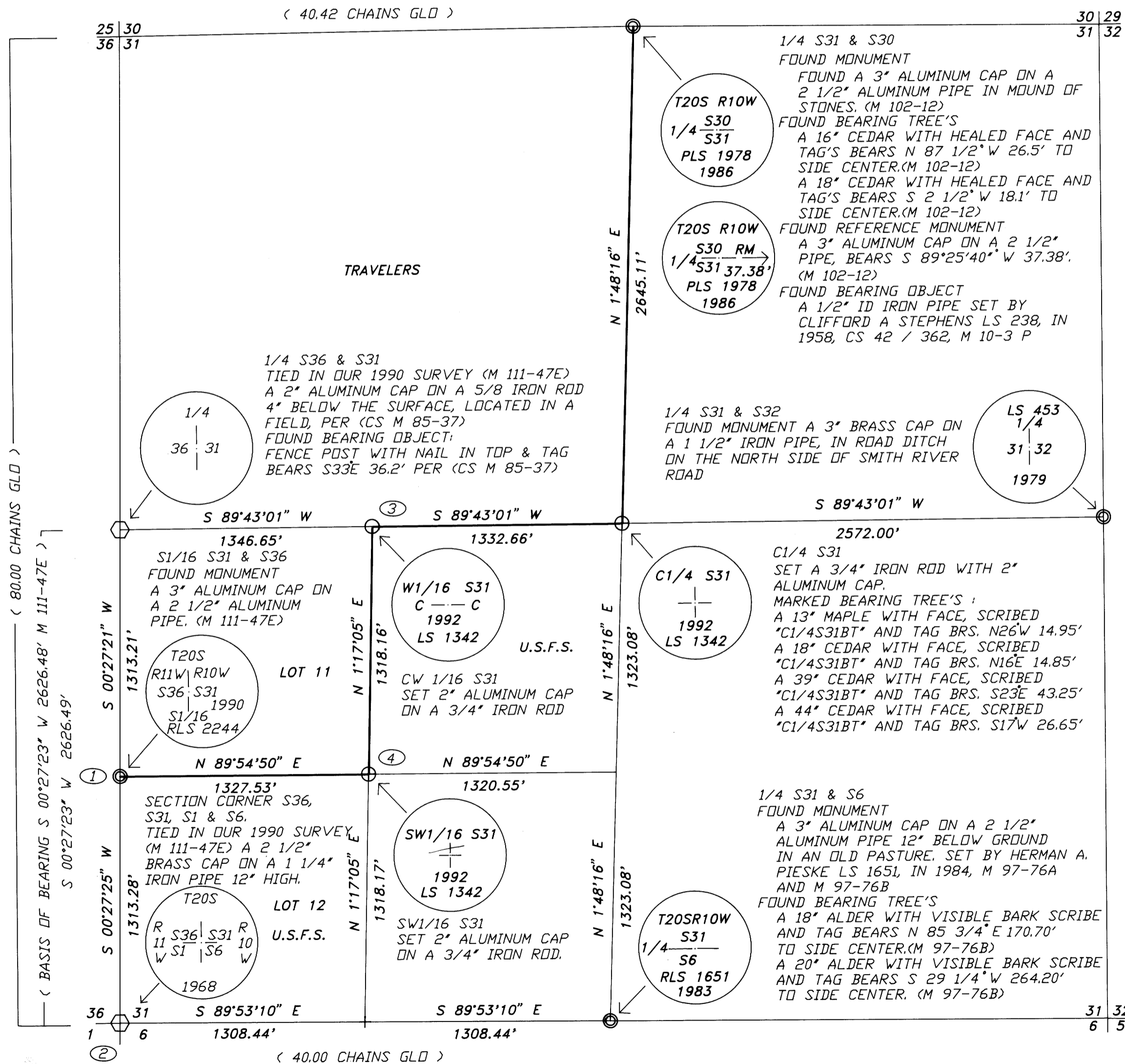
**Stuntzner Engineering  
& Forestry**

ENGINEERING • LAND SURVEYING • FORESTRY  
PLANNING • WATER RIGHTS

705 South 4th St. Phone: (503) 267-2872  
Post Office Box 118  
Cooe Bay, Oregon 97420 Fax: (503) 267-0588

Drawn By: JERRY ESTABROOK	Date: 2/20/92
Checked By: HARVEY WILCOX	Drawing No.: 1
Designed By:	Revised:
Job Name: TRAVELERS	Sheet 1 of 1

**COUNTY SURVEYORS FILE DATA  
DO NOT REMOVE FROM OFFICE**



1" = 500'

MAP FILE M111-47E-82

MAP FILE M111-47E-82